

INDEX OF SHEETS

SHEET NO.	TITLE PAGE
1	TITLE PAGE
2	TYPICAL CROSS-SECTION OF IMPROVEMENT (2 1/2" CRUSHED GRAVEL MIXED IN PLACE SURFACE COURSE REFINED TAR-ITEMS 25 & 30)
3	BANKING AND WIDENING TABLES
4-7	PLAN AND PROFILE SHEETS
8	STANDARD STRUCTURE SHEET 522; CULVERTS
9	" " " " 530; CLEARD RAIL
10	" " " " 530a; STANDARD UNDERDRAIN
11	" " " " 540; SAFETY SIGNS, SIGNS & LIGHTS
11A	" " " " 541; ROAD WIDENING OF SLOPES
12-30	CROSS-SECTIONS

FED. ROAD DIST. NO.	STATE	PROJECT NO.	SHEET NO.	TOTAL SHEETS
9	Vt.	167-L	1	30

STATE OF VERMONT
STATE HIGHWAY DEPARTMENT

PLAN AND PROFILE OF PROPOSED
STATE HIGHWAY

STATE 167-L

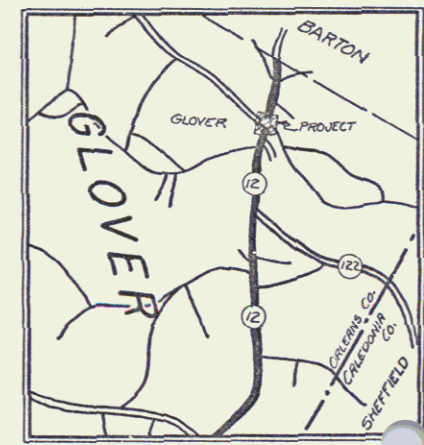
TOWN OF GLOVER

BARTON-HARDWICK ROAD

BEGINNING AT A POINT 2422 FT. SOUTH OF THE BARTON-GLOVER TOWN LINE AND EXTENDING SOUTHERLY ON ROUTE 12 0.684 MILES.

LENGTH OF PROJECT 3612.0 FT = 0.684 MILES

Route VT 16
Project ST 167L
Date 01/01/1940
Pin: 00R577

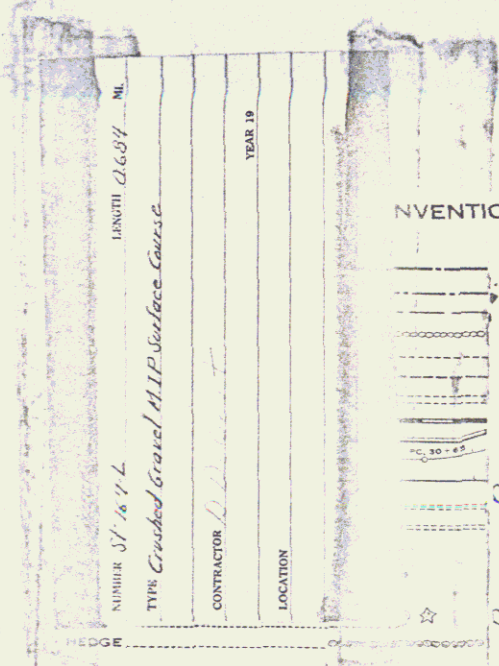


RECORD PLANS
By: A.C. Birnie 5/23/42

Standard Structure Sheet 522 approved by the Chief Engineer on July 14, 1933.

Standard Structure Sheet 530 approved by the Chief Engineer on Aug. 15, 1933.

(To Be Returned to H.O.M. Division)
FORM OF
PERMIT
TOWN FILE
RIGHT-OF-WAY DIVISION



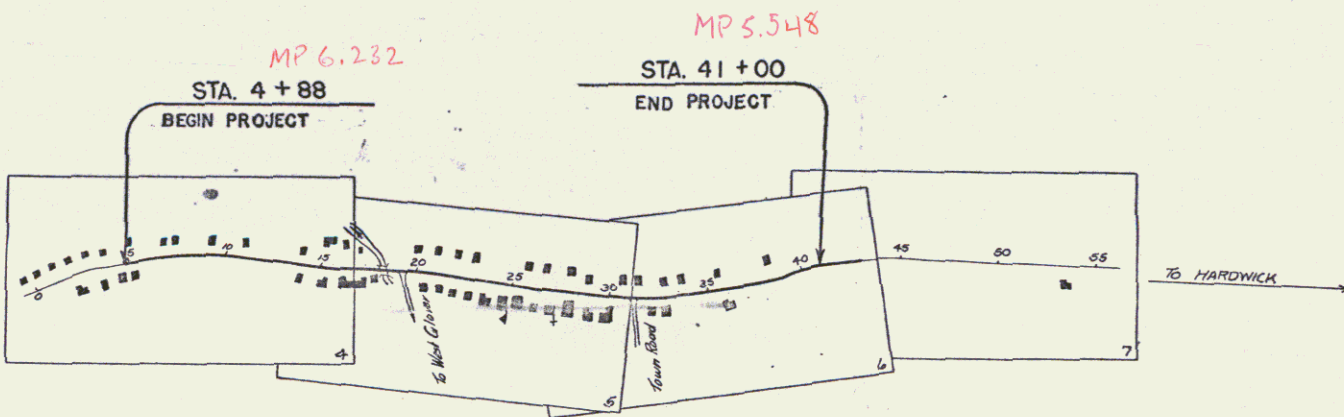
CONVENTIONAL SIGNS

GROUND ELEVATION..... DATUM LINE
GRADE ELEVATION..... DATUM LINE

CURVE DATA
DEFLECTION ANGLE..... Δ
DEGREE OF CURVE..... D
RADIUS OF CURVE..... R
TANGENT DISTANCE..... T
LENGTH OF CURVE..... L
EXTERNAL DISTANCE..... E
POINT OF INTERSECTION..... P. I.
POINT OF CURVE..... P. C.
POINT OF TANGENT..... P. T.
POINT ON TANGENT..... P. O. T.

SCALES

TITLE	1" = 500'
TYPICAL	1" = 2'
PLAN	1" = 50'
PROFILE - HOR.	1" = 50'
PROFILE - VER.	1" = 10'
CROSS-SECTIONS	1" = 5'



These plans are subject to such revisions as may be required by the Public Roads Administration or the Commissioner of Highways. Construction is to be carried on in accordance with the plans and Standard Road and Bridge Specifications of 1936 as approved December 29, 1936 by the Public Roads Administration including all subsequent approved revisions and such revised specifications and special provisions as are submitted with the plans. Attention of the Contractor is called to the fact that the State Highway Board reserves the right to extend this project at the same contract prices. Said cost of extension not to exceed 25% of the amount of the contract.

APPROVED: *H. P. Sargent*
COMMISSIONER OF HIGHWAYS
SUBMITTED BY ORDER OF THE STATE HIGHWAY BOARD

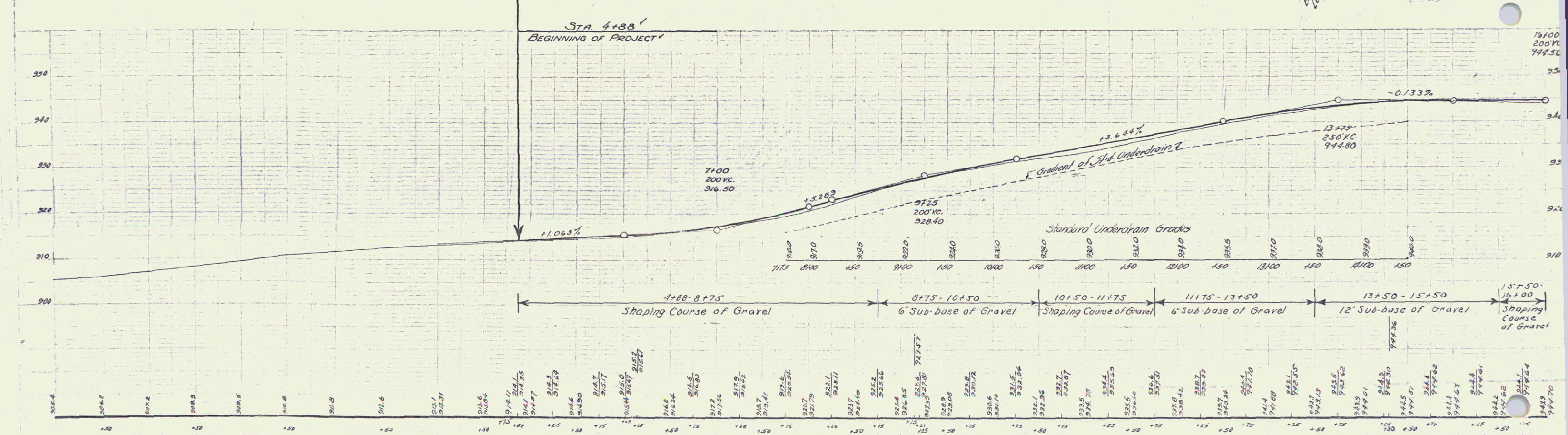
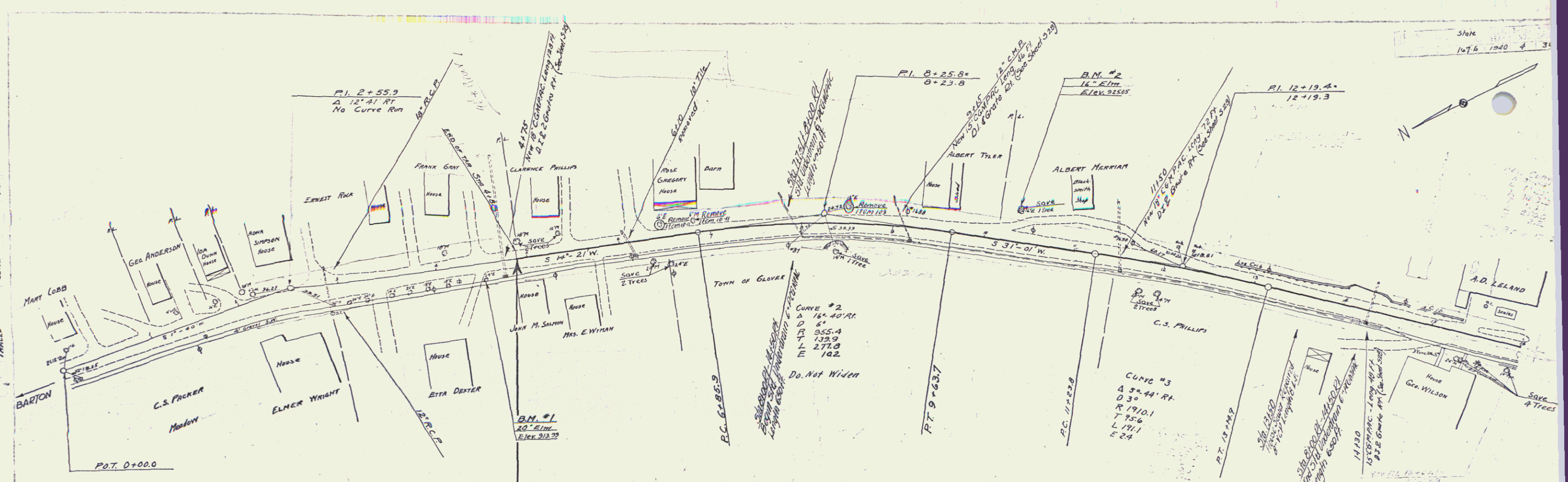
RECOMMENDED
DISTRICT ENGINEER BUREAU OF PUBLIC ROADS
RECOMMENDED FOR APPROVAL
CHIEF ENGINEER BUREAU OF PUBLIC ROADS
APPROVED
DIRECTOR - BUREAU OF PUBLIC ROADS

APPROVED: *A. D. Wood*
DISTRICT HIGHWAY COMMISSIONER

CORRECT: *A. C. Birnie*
ROAD ENGINEER

SERIES 5110 NO. 167L FILED
SHEET 8 OF 30

DIST. #9 PLANS



B.M. #1 SPIKE IN FOOT OF 20' ELM 17.5 FT. RT. OF STA. 4+50 ELEV. 913.39
 B.M. #2 SPIKE IN FOOT OF 16' ELM 33 FT. LT. OF STA 10+35 ELEV. 925.05

Series Plate No. 167.4
 Sheet 2 of 30

Present drainage system on left from bridge
 end of project to be ~~retained~~ as this system
 serves as a sanitary sewer system, except that
 the present drop inlets serving as a surface
 water drainage system shall be "capped" in a
 manner acceptable to the engineer to
 discontinue their use for surface water.

Wherever necessary present drop inlets are
 to be removed and connected with 8" vitrified
 clay pipe to make room for new drop inlets.

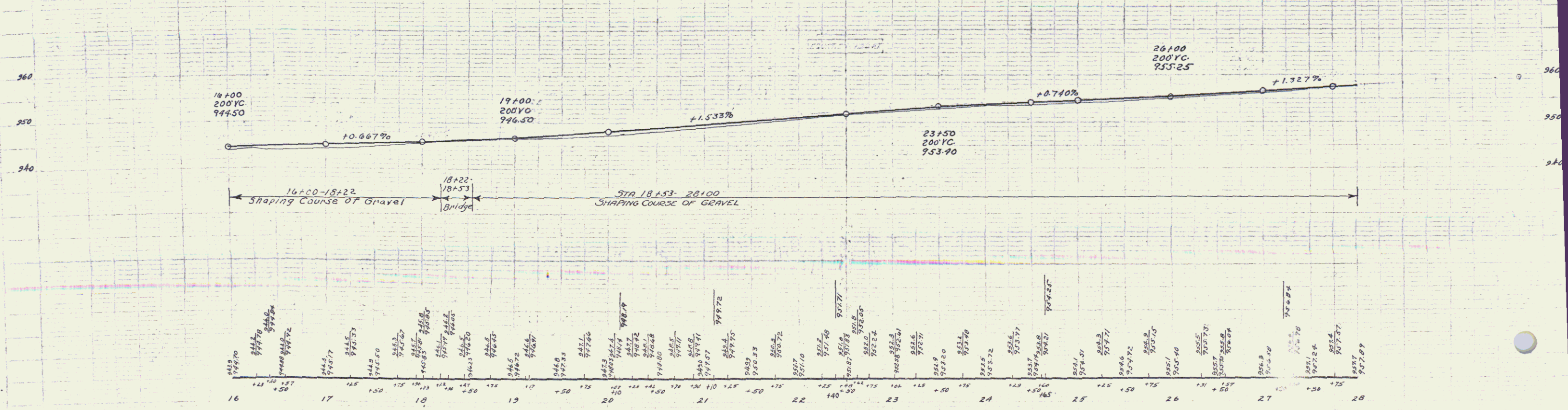
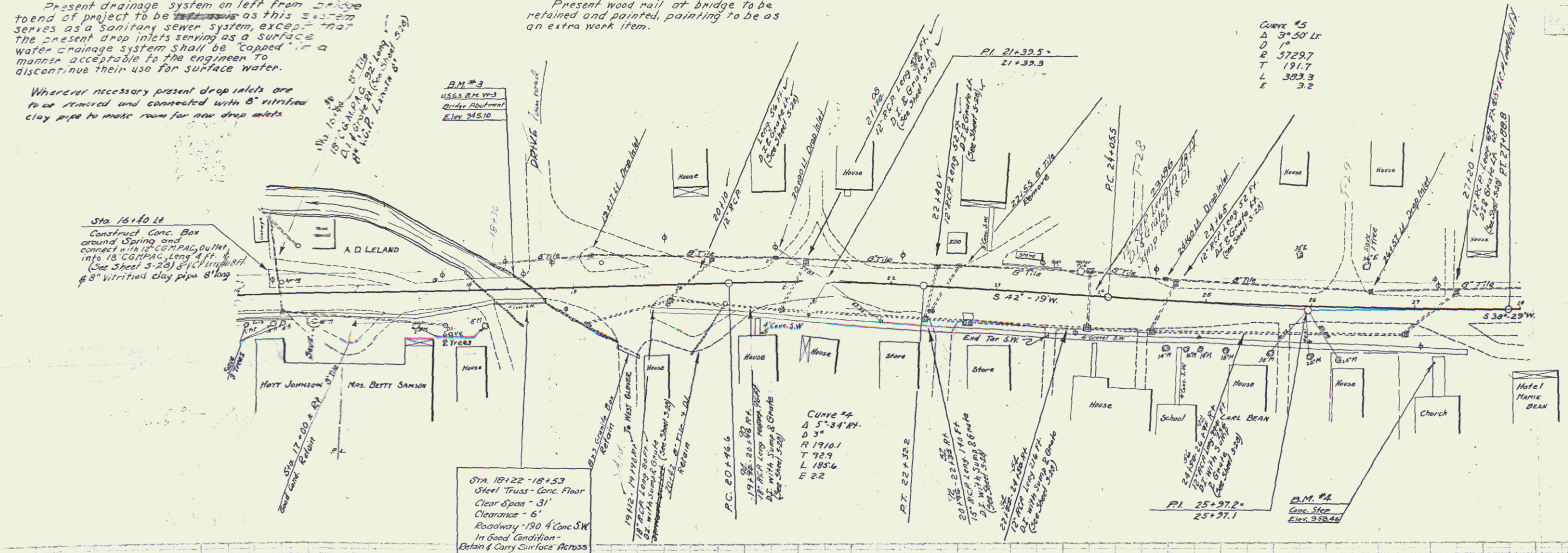
Present wood rail of bridge to be
 retained and painted, painting to be as
 an extra work item.

Curve #5
 Δ 3° 30' LR
 D 10'
 E 5729.7
 T 191.7
 L 383.3
 E 3.2

Scale
 167 L 1940 5 30

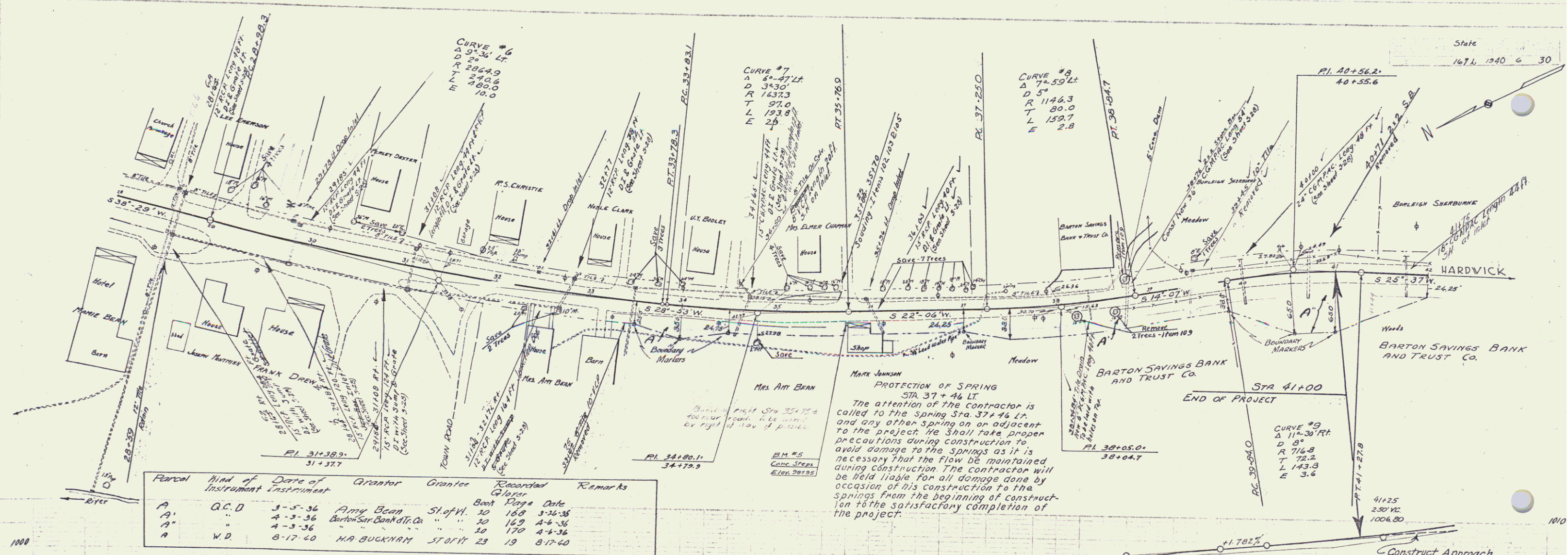
BARRETT
 WOOD
 CONE
 1/4" = 10'

BARRETT
 CONE
 1/4" = 10'



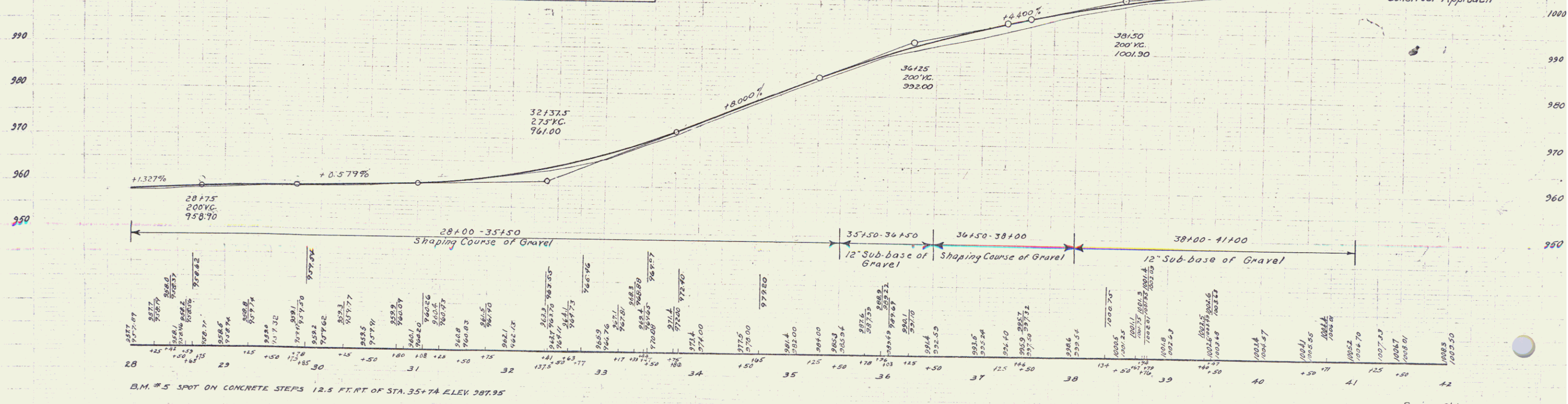
B.M. #3 SPOT ON BRIDGE ABUTMENT 15.5 FT. LT. OF STA. 18+42 ELEV. 945.10
 B.M. #4 SPOT ON CONCRETE STEPS 50 FT. RT. OF STA. 27+16 ELEV. 958.46

Series Plate No. 167 L
 Sheet 5 of 30



Point	Kind of Instrument	Date of Instrument	Grantor	Grantee	Recorded	Remarks
A	Q.C.D.	3-5-36	Amy Bean	ShofW.	20 168	3-26-38
A'	"	4-3-36	Barton Sav. Bank & Tr. Co.	"	20 169	4-6-36
A''	"	4-3-36	"	"	20 170	4-4-36
A	W.D.	8-17-60	HA BUCKNAM	SPORIT	29 19	8-17-60

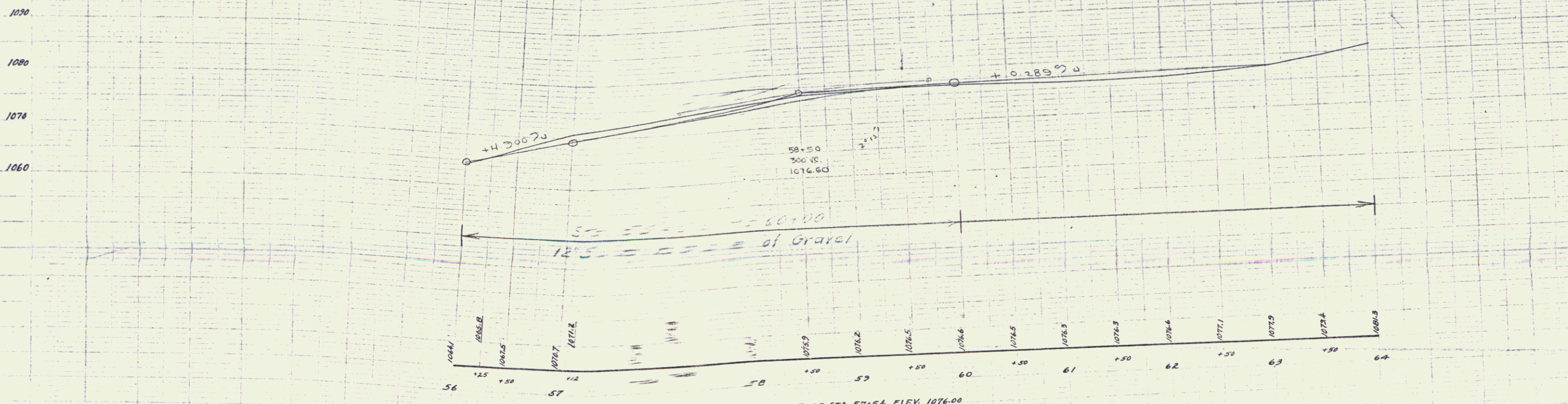
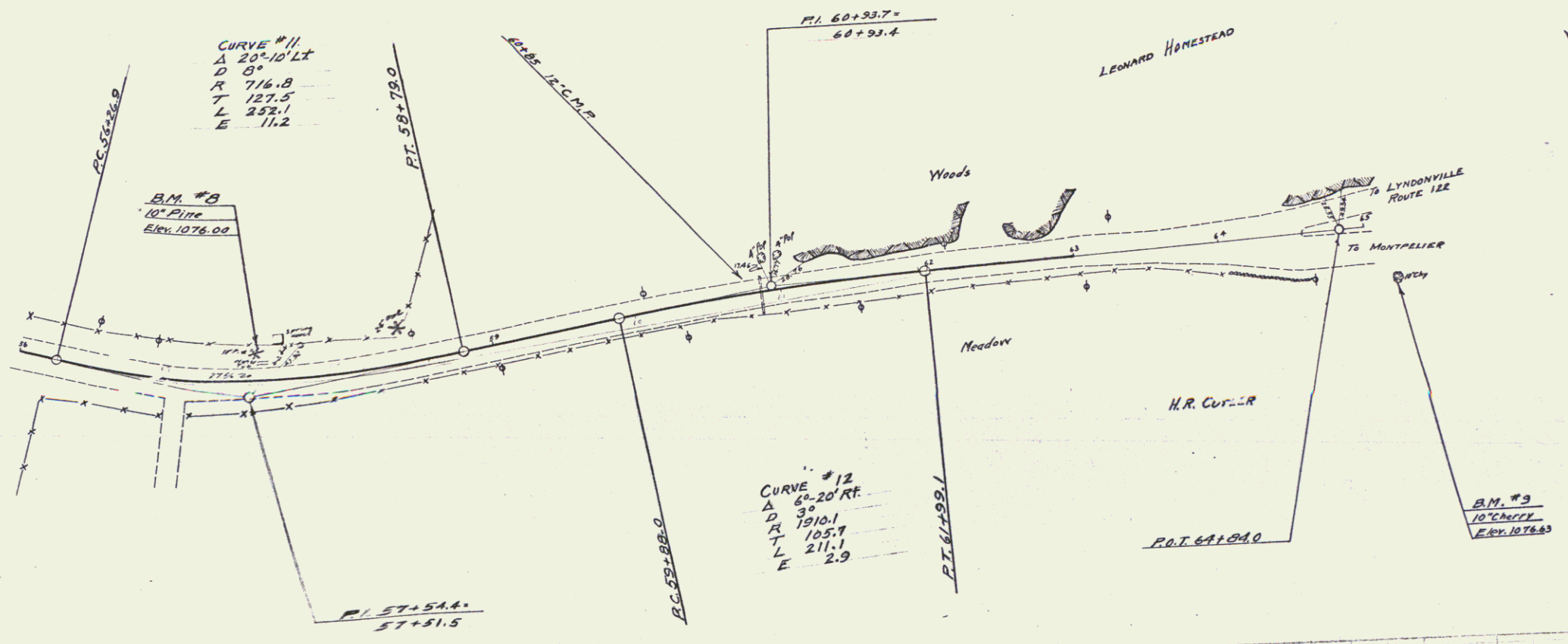
PROTECTION OF SPRING
 STA. 37 + 46 LT.
 The attention of the contractor is called to the Spring Sta. 37 + 46 Lt. and any other spring on or adjacent to the project. He shall take proper precautions during construction to avoid damage to the springs as it is necessary that the flow be maintained during construction. The contractor will be held liable for all damage done by occasion of his construction to the springs from the beginning of construction to the satisfactory completion of the project.



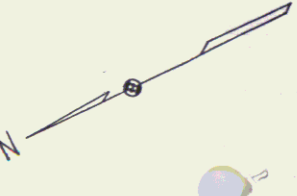
B.M. #5 SPOT ON CONCRETE STEPS 12.5 FT. FT. OF STA. 35+74 ELEV. 987.95

PLAN
 1/4" = 100'
 BARRETT
 CONE
 CONE
 TRACED
 1/4" = 100'

PLAN
 1/4" = 100'
 BARRETT
 CONE
 CONE
 TRACED
 1/4" = 100'



B.M. #8 SPIKE IN ROOT C
 4 FT. LT. OF STA 57+54 ELEV. 1076.00
 B.M. #9 SPIKE IN TRUNK C
 33.5 FT. RT. OF STA 65+10 ELEV. 1076.63



Glaver 16