

Full sheet

Three Cable Guard Rail	Lt.	Rt.
710+00-711+31	131	
716+50-720+50	400	

Control Of Section Of Old Highway Between Sta. 714+49 AND Sta. 732+19 Lt. DISCONTINUED & SET TO WATERFORD ESTATES, INC. Recorded Book 2, Page 175 Of Highway Records, Town Of Glover, 30th Day Of October, 1953.

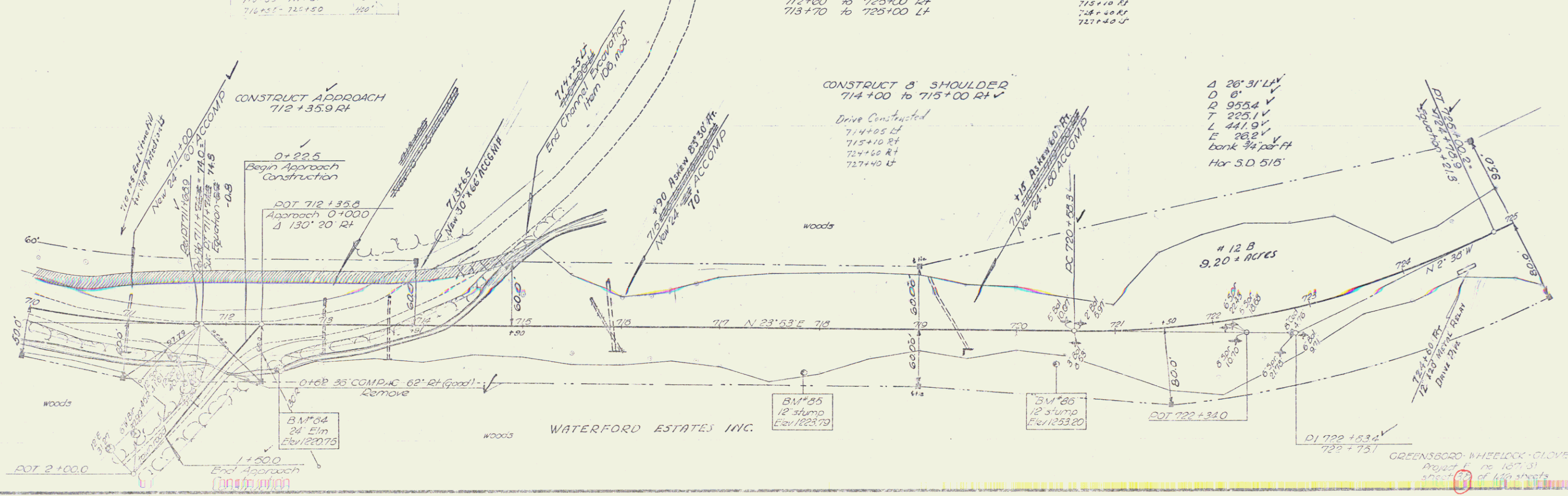
WATERFORD ESTATES INC.

WATERFORD ESTATES INC.

Three Cable Guard Rail	Lt.	Rt.
714+50-711+31	131	
716+50-720+50	400	

Clearing & Grubbing - Item 104
 710+00 to 711+85 Rt
 712+00 to 725+00 Rt
 713+70 to 725+00 Lt

Drives Constructed
 714+05 Lt
 715+10 Rt
 724+00 Rt
 727+40 Lt



GREENSBORO-WHEELOCK-GLOVER
 Project No. 167-31
 Sheet 10 of 120 sheets