

WOOD GUIDE POSTS
73+00-74+25 LT

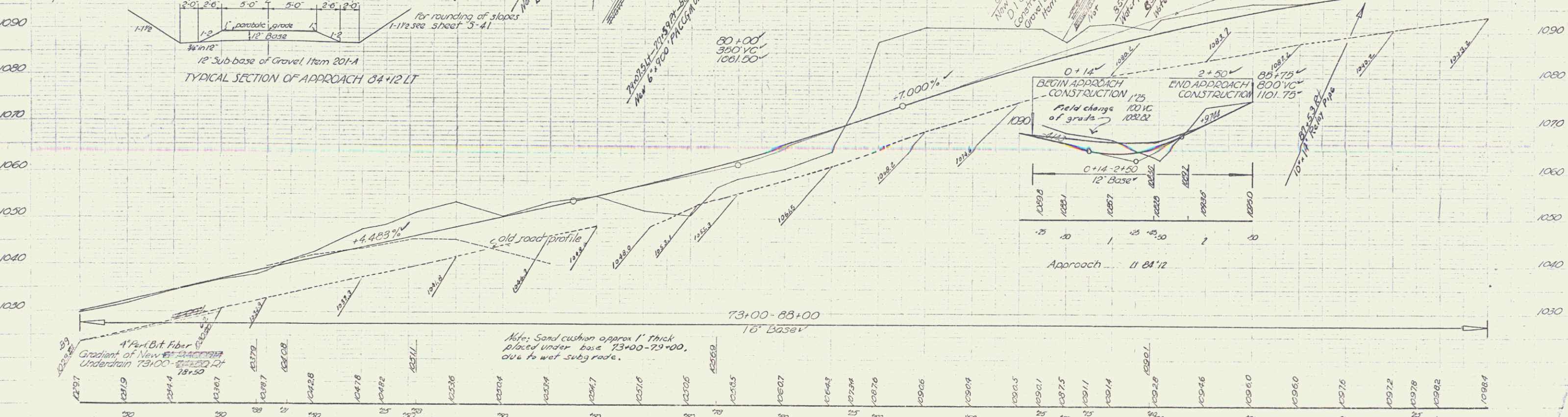
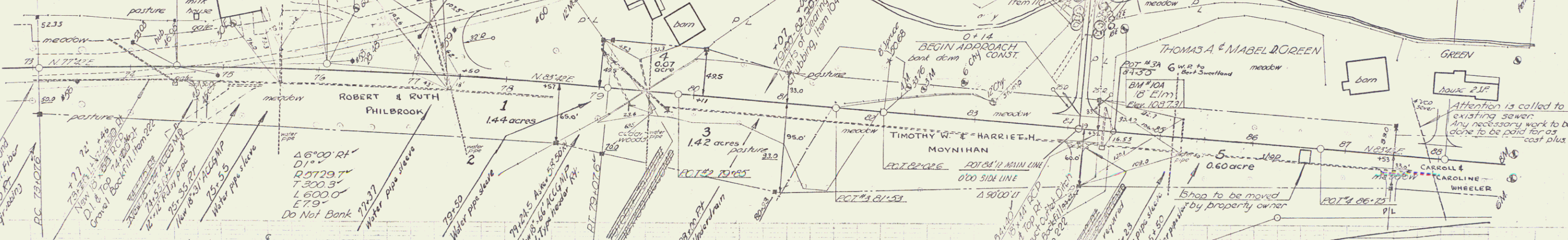
CONSTRUCT APPROACH LT
75+21 ✓
84+12 ✓

NON GOVT PARTICIPATION
75+55 77+37 79+53+20 85+88+28
Install sleeves for water pipes across § 35150
roadway, Item 103.
Sleeves, Item 431 to be furnished by
the State

CONSTRUCT DRIVES
75+55 75+53 RT
84+12 RT ✓
87+53 RT ✓
88+00 LT ✓

Control of Section of old highway between
Sta. 76153 (225 ft. 11") and Sta. 103+16 (33 ft. 11")
relinquished to the Town of Hardwick
Recorded book 47, page 161B, of Map. Records, Sept. 26, 1952
at 8:40 o'clock A.M.
PI 76+079+V
76+073

PARCEL #2	#3	#4	#5
W.D.O.E.	W.D.O.E.	W.D.O.E.	W.D.O.E.
DATE 3-23-50	6-29-50	6-29-50	6-29-50
GRANTOR ELIZABETH TIMOTHY W. JAMES B. THOMAS A. & HARRIET MOYNIHAN			
GRANTEE ST. OF VT. ST. OF VT. ST. OF VT. ST. OF VT.			
RECORDS HARDWICK HARDWICK HARDWICK HARDWICK			
BOOK 73	74	74	73
PAGE 10	10	10	10
DATE 7-26-50	7-26-50	7-26-50	7-26-50
REMARKS: 1. 1.44 acres 2. 1.42 acres 3. 1.42 acres 4. 0.67 acres 5. 0.60 acre			



BM#9 51T 35' Maple 62 1/2' sta 76+35 Elev 1044.51
BM#10A 51T 12' Elm 105 1/2' sta 84+50 Elev 1037.31

HARDWICK-GREENSBORO
Series No. 1673
Sheet 23 of 25 sheets