

INDEX OF SHEETS

SHEET NO. 1	TITLE PAGE
2	TYPICAL CROSS-SECTION OF IMPROVEMENT
3	BANKING AND WIDENING TABLES
4-9	PLAN AND PROFILE
9	S-28 PIPE CULVERTS
10	S-30 GUARD RAIL
11	S-30A BOUNDARY MARKERS
12	S-40 BARRICADES, SIGNS, & LIGHTS
13	S-41 ROUNDING OF SLOPES
14-34	CROSS SECTIONS

2 1/2 CRUSHED GRAVEL MIXED-IN-PLACE SURFACE COURSE
ITEMS 25 & 30

STATE OF VERMONT
STATE HIGHWAY DEPARTMENT

PLAN AND PROFILE OF PROPOSED
STATE HIGHWAY

SECONDARY PROJECT

TOWN OF HARDWICK

VERMONT ROUTE 16

HARDWICK-EAST HARDWICK ROAD

BEGINNING AT THE NORTHEASTERLY END OF THE BRIDGE OVER HAYNESVILLE BROOK,
148 FEET FROM THE INTERSECTION OF VERMONT ROUTES 12 & 15 AND EXTENDING
NORTHEASTERLY 1.210 MILES

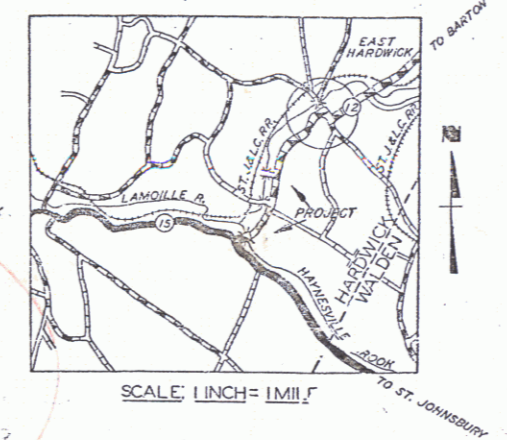
LENGTH OF PROJECT 63895 FEET = 1.210 MILES

FED. ROAD DIST. NO.	STATE	FISCAL YEAR	SHEET NO.	TOTAL SHEETS
9	Vt.	1946	1	34

STANDARD STRUCTURE SHEETS APPROVED BY THE CHIEF ENGINEER V.S.H.D.

S-28	APRIL 26, 1941
S-30	MAY 12, 1941
S-30A	APRIL 19, 1941
S-40	DEC. 18, 1945

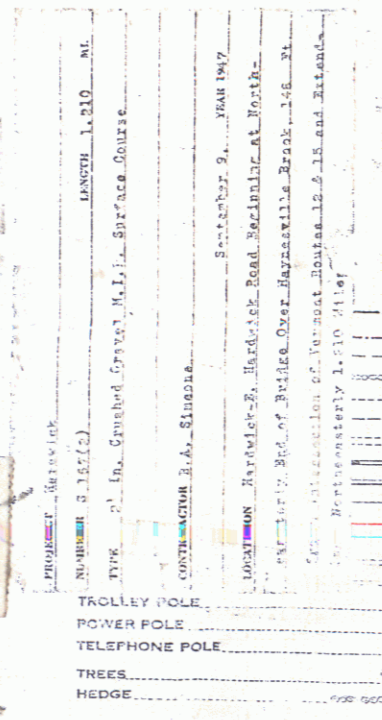
Project No: S167(2)
Route: VT 16
Date 07/10/1946
P. n # DDR 574



RECORD PLANS
Prepared by C.F. Luthe, Dec. 16, 1947
Resident Engineer - C.F. Laythe

RIGHT-OF-WAY DIVISION
TOWN FILE
PERPETUAL
Town of VT 16
(To Be Returned To R.O.W. Division)

APPROVED: July 10, 1946
H.E. Augustus
COMMISSIONER OF HIGHWAYS
SUBMITTED BY ORDER OF THE STATE HIGHWAY BOARD



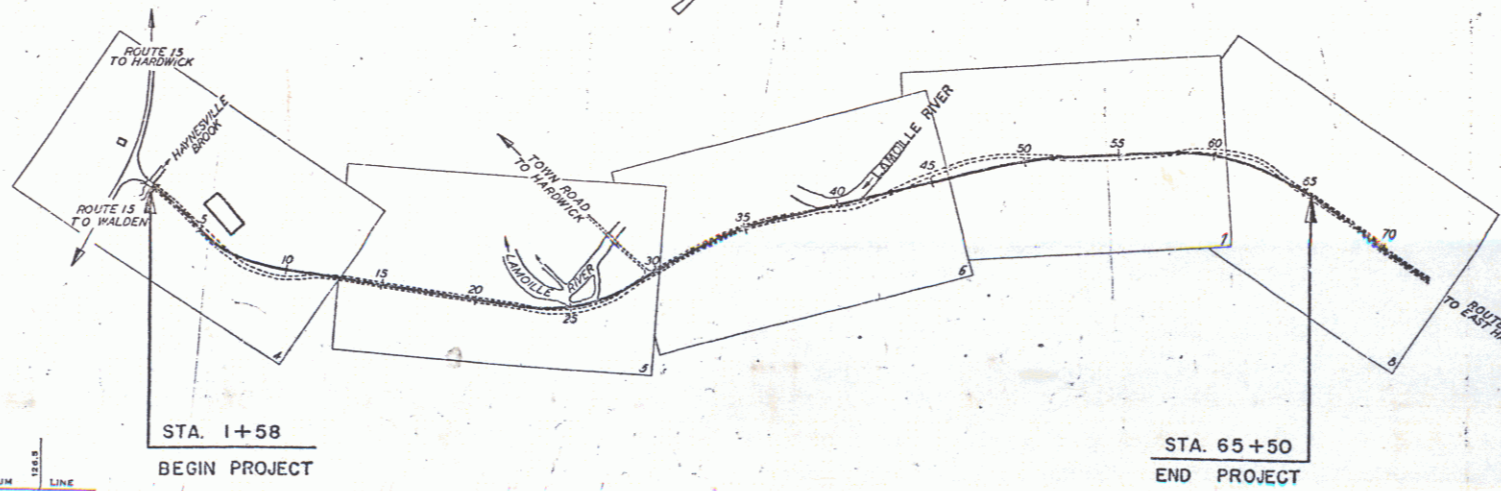
RECORD PLANS
Hardwick S 167 (2)
Contractor - B. A. Simeone
Completed - Sept. 9, 1947

CURVE DATA

DEFLECTION ANGLE	Δ
DEGREE OF CURVE	D
RADIUS OF CURVE	R
TANGENT DISTANCE	T
LENGTH OF CURVE	L
EXTERNAL DISTANCE	E
POINT OF INTERSECTION	P. I.
POINT OF CURVE	P. C.
POINT OF TANGENT	P. T.
POINT ON TANGENT	P. O. T.

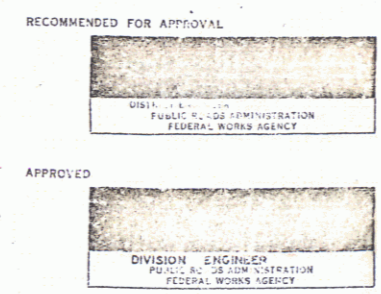
SCALES

TITLE	1" = 500'
TYPICAL	1" = 100'
PLAN	1" = 50'
PROFILE HORIZONTAL	1" = 50'
PROFILE VERTICAL	1" = 10'
CROSS SECTIONS	1" = 3'

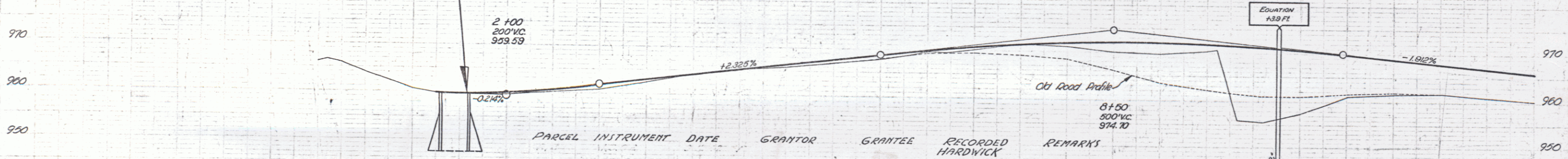
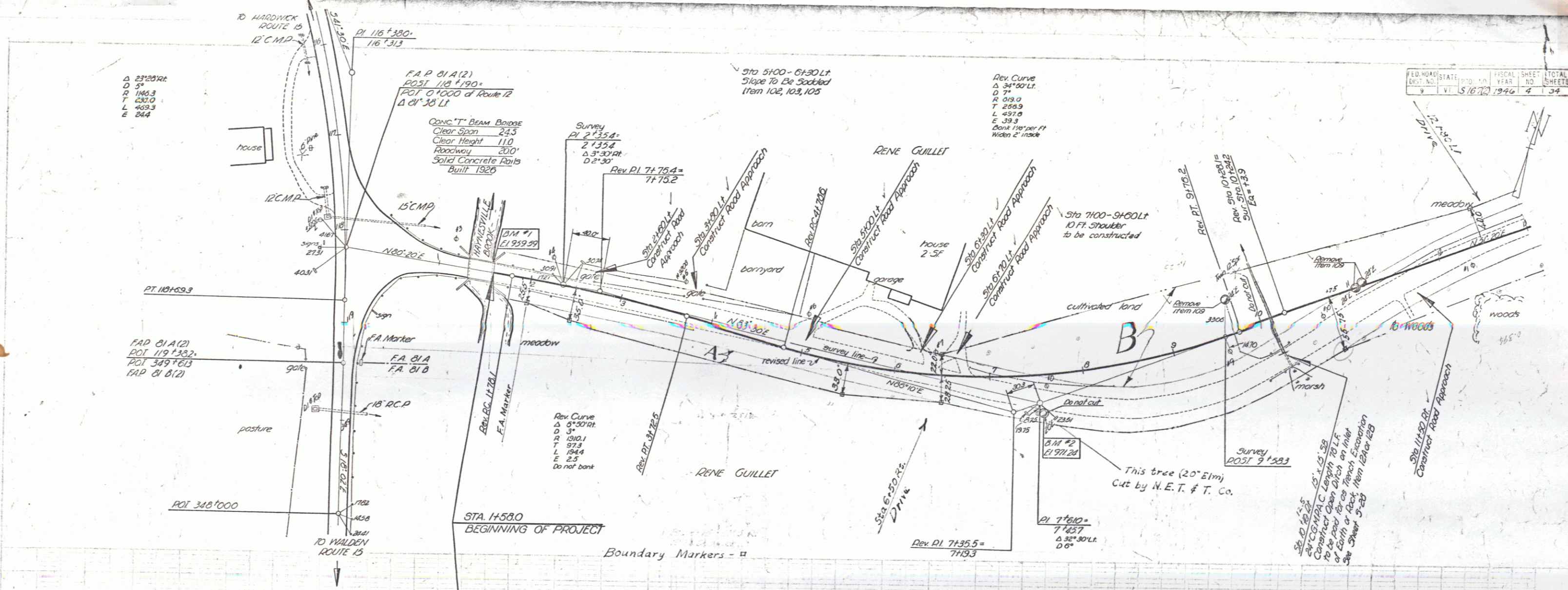


THESE PLANS ARE SUBJECT TO SUCH REVISIONS AS MAY BE REQUIRED BY THE PUBLIC ROADS ADMINISTRATION OR THE COMMISSIONER OF HIGHWAYS.

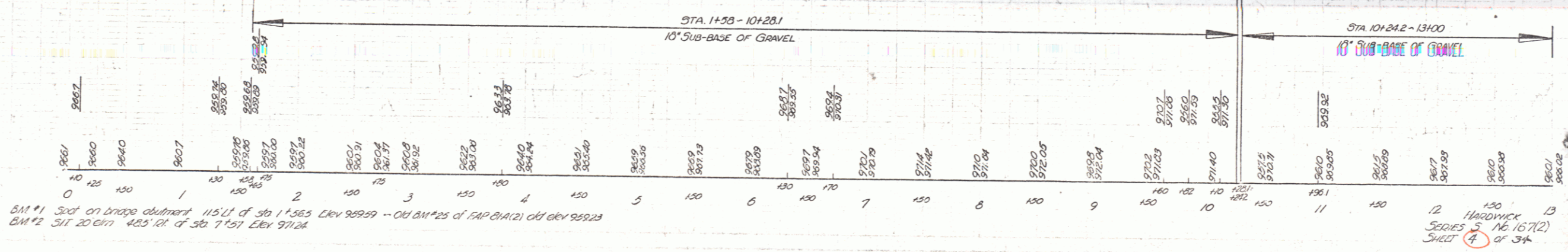
CONSTRUCTION IS TO BE CARRIED ON IN ACCORDANCE WITH THE PLANS AND THE STANDARD ROAD AND BRIDGE SPECIFICATIONS OF 1936, AS APPROVED DECEMBER 28TH, 1936 BY THE PUBLIC ROADS ADMINISTRATION, INCLUDING ALL SUBSEQUENT APPROVED REVISIONS AND SUCH REVISED SPECIFICATIONS AND SPECIAL PROVISIONS AS ARE SUBMITTED WITH THE PLANS.



APPROVED: July 10, 1946
APPROVED: July 10, 1946
SERIES S No. 167(2) FILED
SHEET 1 OF 34

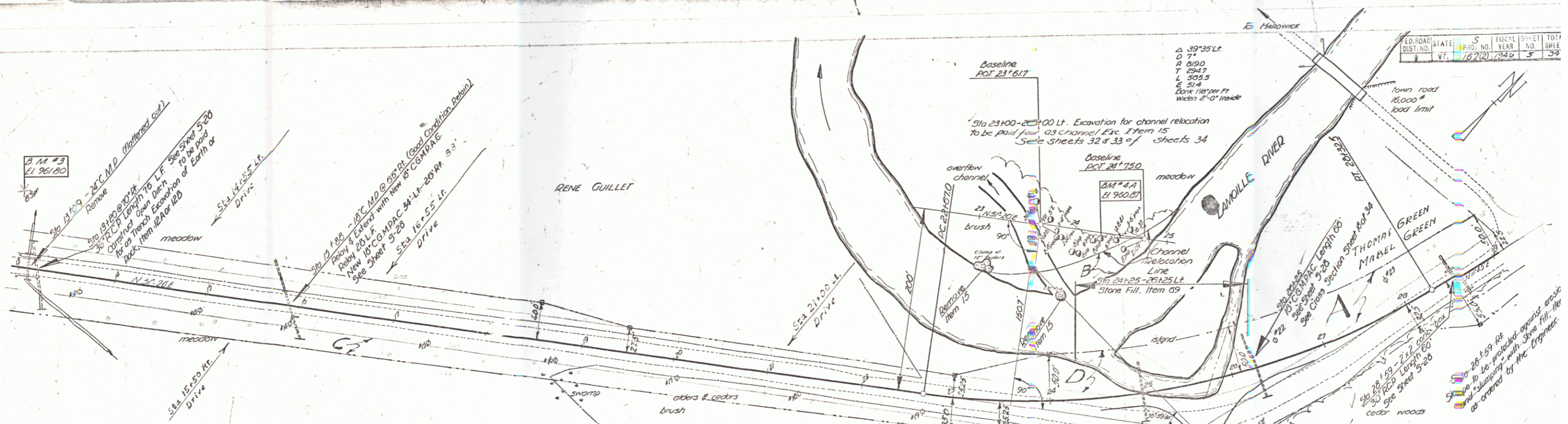


PARCEL	INSTRUMENT	DATE	GRANTOR	GRANTEE	RECORDED HARDWICK BOOK	PAGE	DATE	REMARKS
A, B	W.D.O.E.	9-12-42	RENE L. DELIA GUILLET	ST OF VT	40	415-16	9-18-42	

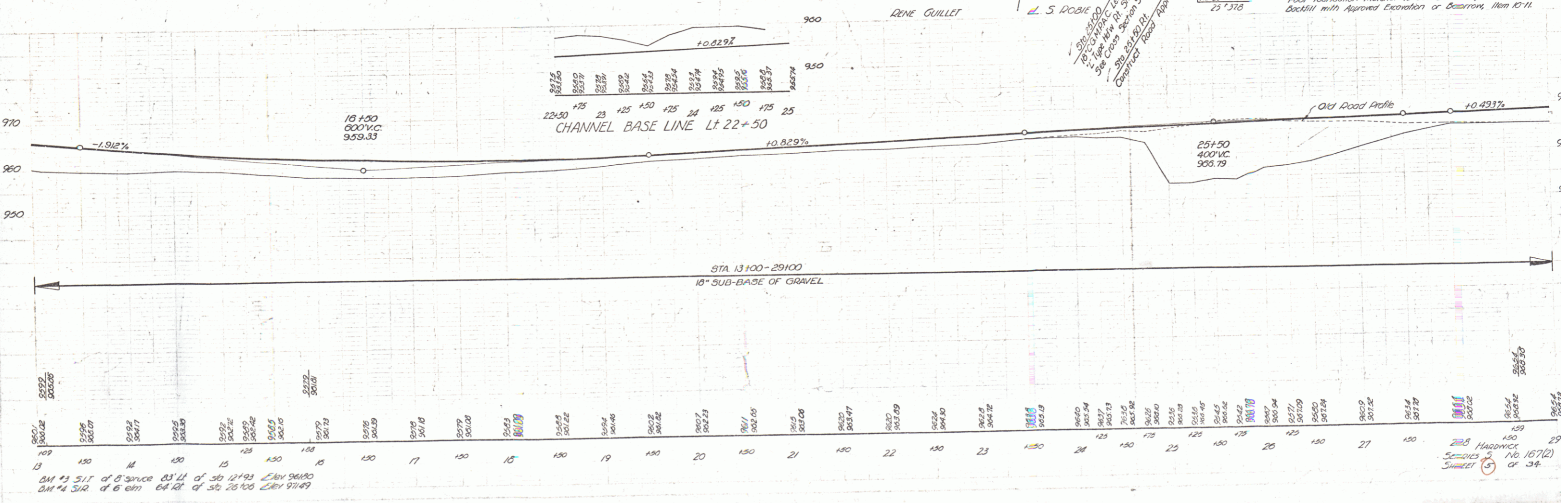


BM #1 Spot on bridge abutment 115.11 of Sta 1+565 Elev 959.59 - Old BM #25 of FAP B1A(2) old elev 959.23
 BM #2 511 20' 0" 425.01 of Sta 7+571 Elev 971.24

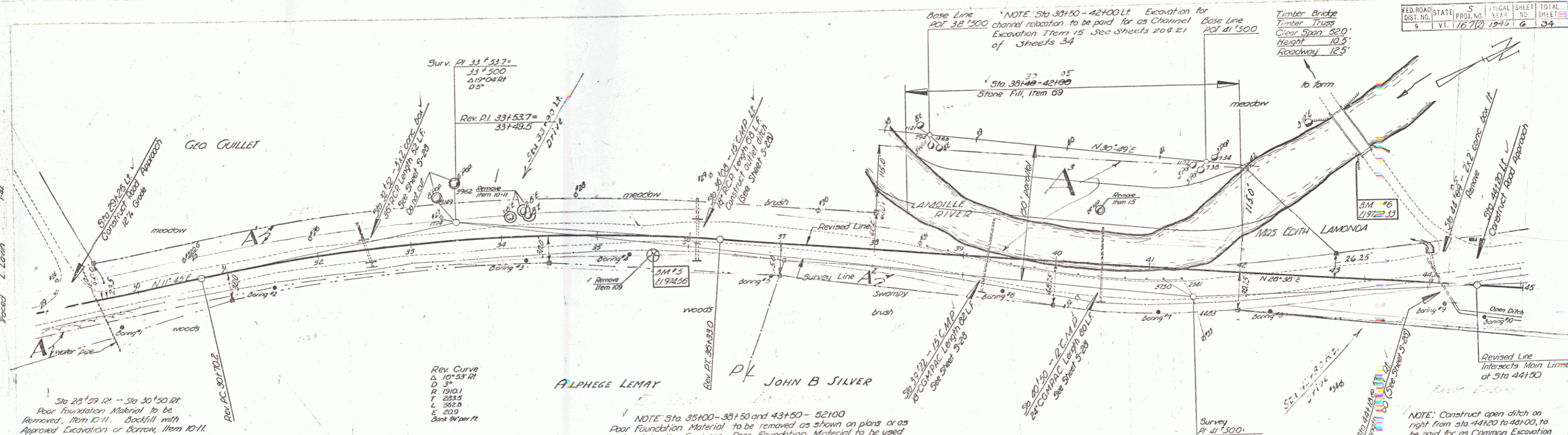
12 HARDWICK 13
 SERIES 3, ME 167(2)
 SHEET 4 of 34



PARCEL	INSTRUMENT	DATE	GRANTOR	GRANTEE	RECORDED	REMARKS
					HARDWICK	
					BOOK PAGE	DATE
C D	W D O E	9-12-42	RENE & DELIA GUILLET	ST OF VT	40 415-16	9-18-42
A	W D O E	10-8-42	THOMAS GREEN	ST OF VT	40 440	12-10-42
B	W D O E	10-12-42	GEO. & OLIVETTE GUILLET	ST OF VT	40 413	1-2-18-42 PERMIT



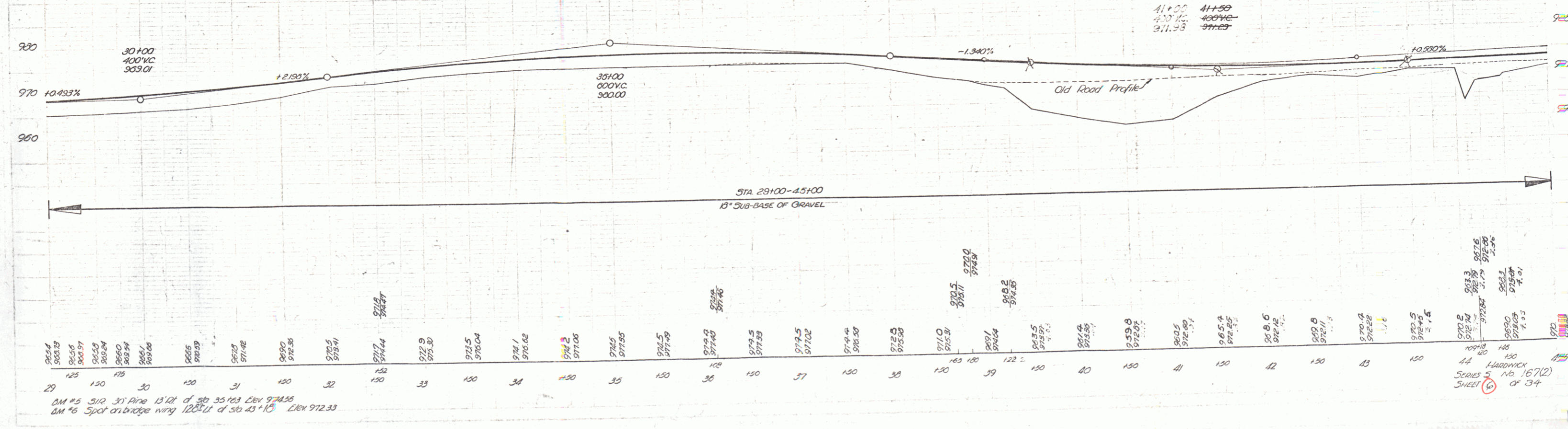
BM #3 S.I.T. of 0.30m 83' Lt. of Sta 12+93 Elev 961.80
 BM #4 S.I.T. of 6' elm 64' Lt. of Sta 25+00 Elev 971.49



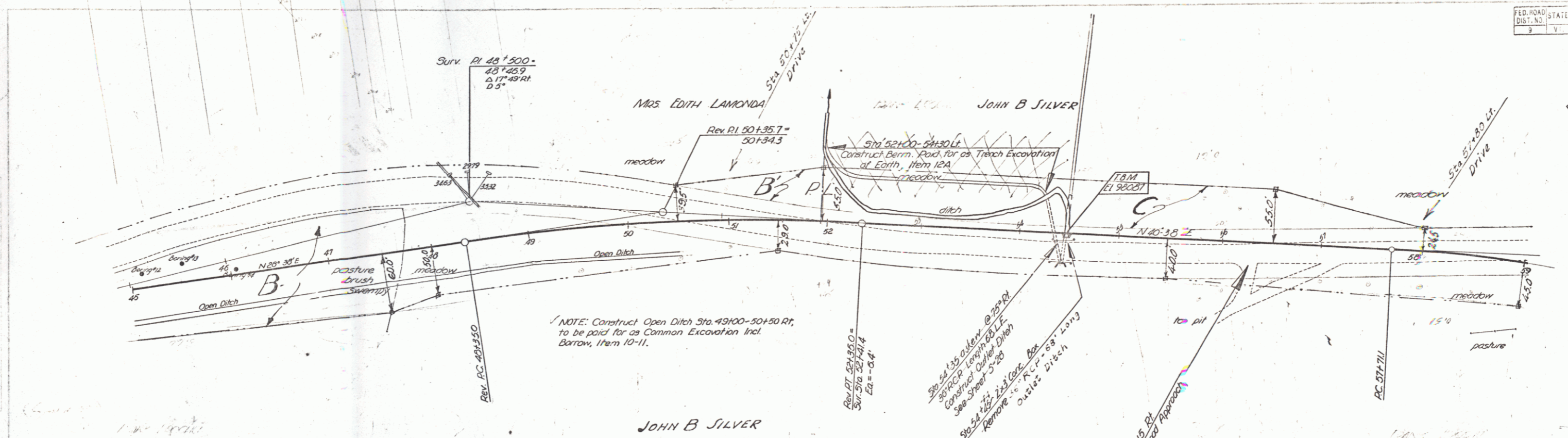
PARCEL	INSTRUMENT	DATE	GRANTOR	GRANTEE	RECORDED HARDWICK BOOK PAGE	REMARKS
A	W.D.O.E	10-20-42	ALPHEGE & ANNE MARIE LEMAY	ST OF VX	40 441 12-10-42	
A ¹	W.D.O.E	9-12-42	Geo. OLIVETTE GUILLET	ST OF VX	40 413 9-18-42	
A ²	W.D.O.E	10-3-42	J. B. SILVER	ST OF VX	40 443 12-15-42	
A ³	W.D.O.E	12-7-42	EDITH LAMONDA	ST OF VX	40 442 12-10-42	

NOTE: Sta 35+00 - 38+50 and 43+50 - 52+00 Poor Foundation Material to be removed as shown on plans or as ordered by the Engineer. Poor Foundation Material to be used on embankment between Vanite and land slope at locations shown on plans or as ordered by the Engineer. Hauling, rebranding and disposal of Poor Foundation Material to be included in bid-price for Common Excavation incl. Borrow, Item 10-11. Excavation of Poor Foundation Material to be paid for as Common Excavation including Borrow Item 10-11, measured in its original location.

Note: Grade from Sta 39+50 to end of project raised 1.0'

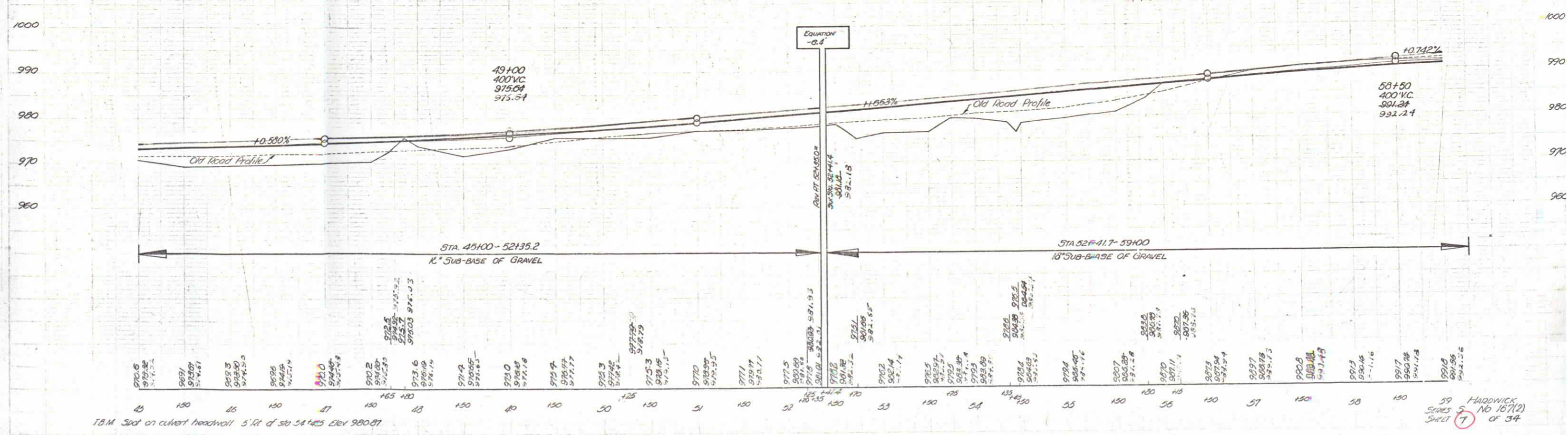


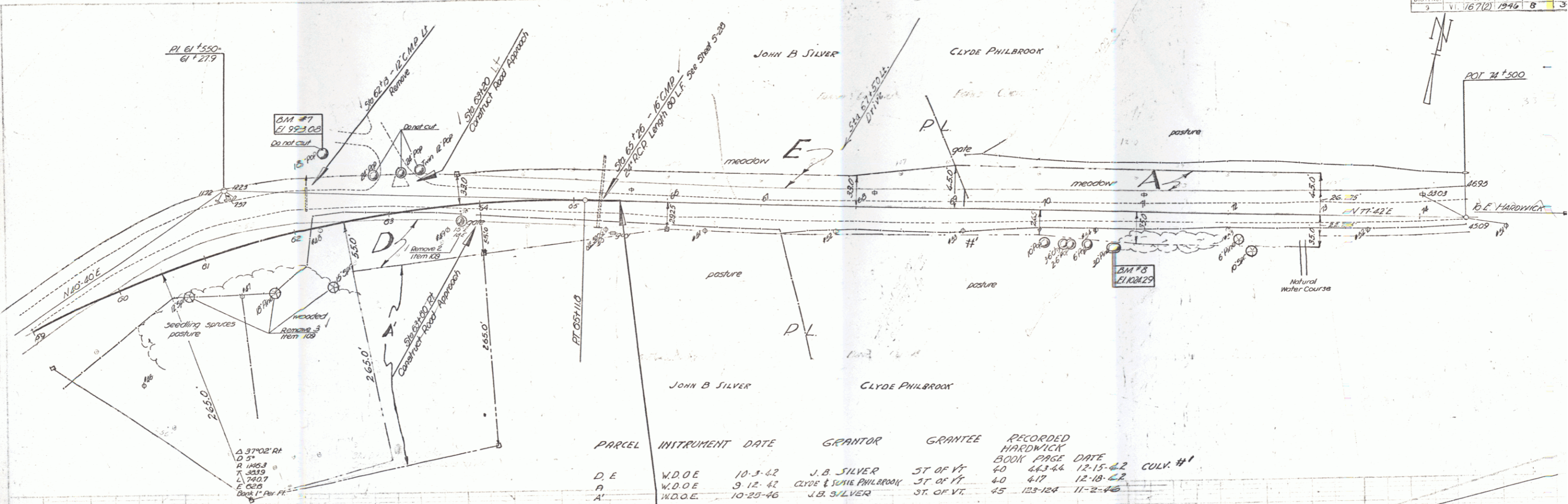
DM #5 512 31 Ave 13'12" d. 30 35'163 Elev 974.36
 DM #6 Spot on bridge wing 120'11" d. 30 45'10 Elev 972.33



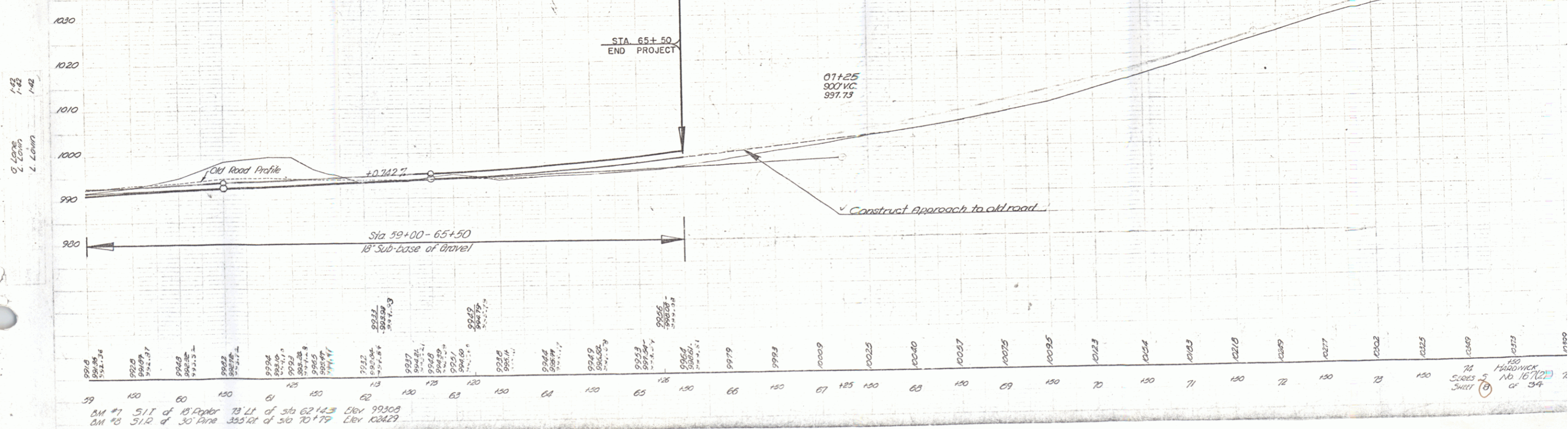
REV. CURVE
Δ 12° 00' 00"
D 3"
R 180.1
T 200.1
L 400.0
E 10.5
Bank 3/4 per ft.

PARCEL	INSTRUMENT	DATE	GRANTOR	GRANTEE	RECORDED	REMARKS
B, C	W. D. O. E.	10-3-42	J. B. SILVER	ST OF VT.	40 443-44	12-15-42
B'	W. D. O. E.	12-7-42	EDITH LAMONDA	ST OF VT.	40 442	12-10-42





PARCEL	INSTRUMENT DATE	GRANTOR	GRANTEE	RECORDED HARDWARE BOOK PAGE DATE	CULV. #
D, E	W.D.O.E. 10-3-42	J. B. SILVER	ST. OF VT.	40 443-44 12-15-42	
A	W.D.O.E. 9-12-42	CLYDE & JANE PHILBROOK	ST. OF VT.	40 417 12-18-42	
A'	W.D.O.E. 10-29-46	J. B. SILVER	ST. OF VT.	45 123-124 11-2-46	



990.0
 990.1
 990.2
 990.3
 990.4
 990.5
 990.6
 990.7
 990.8
 990.9
 991.0
 991.1
 991.2
 991.3
 991.4
 991.5
 991.6
 991.7
 991.8
 991.9
 992.0
 992.1
 992.2
 992.3
 992.4
 992.5
 992.6
 992.7
 992.8
 992.9
 993.0
 993.1
 993.2
 993.3
 993.4
 993.5
 993.6
 993.7
 993.8
 993.9
 994.0
 994.1
 994.2
 994.3
 994.4
 994.5
 994.6
 994.7
 994.8
 994.9
 995.0
 995.1
 995.2
 995.3
 995.4
 995.5
 995.6
 995.7
 995.8
 995.9
 996.0
 996.1
 996.2
 996.3
 996.4
 996.5
 996.6
 996.7
 996.8
 996.9
 997.0
 997.1
 997.2
 997.3
 997.4
 997.5
 997.6
 997.7
 997.8
 997.9
 998.0
 998.1
 998.2
 998.3
 998.4
 998.5
 998.6
 998.7
 998.8
 998.9
 999.0
 999.1
 999.2
 999.3
 999.4
 999.5
 999.6
 999.7
 999.8
 999.9
 1000.0
 1000.1
 1000.2
 1000.3
 1000.4
 1000.5
 1000.6
 1000.7
 1000.8
 1000.9
 1001.0
 1001.1
 1001.2
 1001.3
 1001.4
 1001.5
 1001.6
 1001.7
 1001.8
 1001.9
 1002.0
 1002.1
 1002.2
 1002.3
 1002.4
 1002.5
 1002.6
 1002.7
 1002.8
 1002.9
 1003.0
 1003.1
 1003.2
 1003.3
 1003.4
 1003.5
 1003.6
 1003.7
 1003.8
 1003.9
 1004.0
 1004.1
 1004.2
 1004.3
 1004.4
 1004.5
 1004.6
 1004.7
 1004.8
 1004.9
 1005.0
 1005.1
 1005.2
 1005.3
 1005.4
 1005.5
 1005.6
 1005.7
 1005.8
 1005.9
 1006.0
 1006.1
 1006.2
 1006.3
 1006.4
 1006.5
 1006.6
 1006.7
 1006.8
 1006.9
 1007.0
 1007.1
 1007.2
 1007.3
 1007.4
 1007.5
 1007.6
 1007.7
 1007.8
 1007.9
 1008.0
 1008.1
 1008.2
 1008.3
 1008.4
 1008.5
 1008.6
 1008.7
 1008.8
 1008.9
 1009.0
 1009.1
 1009.2
 1009.3
 1009.4
 1009.5
 1009.6
 1009.7
 1009.8
 1009.9
 1010.0
 1010.1
 1010.2
 1010.3
 1010.4
 1010.5
 1010.6
 1010.7
 1010.8
 1010.9
 1011.0
 1011.1
 1011.2
 1011.3
 1011.4
 1011.5
 1011.6
 1011.7
 1011.8
 1011.9
 1012.0
 1012.1
 1012.2
 1012.3
 1012.4
 1012.5
 1012.6
 1012.7
 1012.8
 1012.9
 1013.0
 1013.1
 1013.2
 1013.3
 1013.4
 1013.5
 1013.6
 1013.7
 1013.8
 1013.9
 1014.0
 1014.1
 1014.2
 1014.3
 1014.4
 1014.5
 1014.6
 1014.7
 1014.8
 1014.9
 1015.0
 1015.1
 1015.2
 1015.3
 1015.4
 1015.5
 1015.6
 1015.7
 1015.8
 1015.9
 1016.0
 1016.1
 1016.2
 1016.3
 1016.4
 1016.5
 1016.6
 1016.7
 1016.8
 1016.9
 1017.0
 1017.1
 1017.2
 1017.3
 1017.4
 1017.5
 1017.6
 1017.7
 1017.8
 1017.9
 1018.0
 1018.1
 1018.2
 1018.3
 1018.4
 1018.5
 1018.6
 1018.7
 1018.8
 1018.9
 1019.0
 1019.1
 1019.2
 1019.3
 1019.4
 1019.5
 1019.6
 1019.7
 1019.8
 1019.9
 1020.0
 1020.1
 1020.2
 1020.3
 1020.4
 1020.5
 1020.6
 1020.7
 1020.8
 1020.9
 1021.0
 1021.1
 1021.2
 1021.3
 1021.4
 1021.5
 1021.6
 1021.7
 1021.8
 1021.9
 1022.0
 1022.1
 1022.2
 1022.3
 1022.4
 1022.5
 1022.6
 1022.7
 1022.8
 1022.9
 1023.0
 1023.1
 1023.2
 1023.3
 1023.4
 1023.5
 1023.6
 1023.7
 1023.8
 1023.9
 1024.0
 1024.1
 1024.2
 1024.3
 1024.4
 1024.5
 1024.6
 1024.7
 1024.8
 1024.9
 1025.0
 1025.1
 1025.2
 1025.3
 1025.4
 1025.5
 1025.6
 1025.7
 1025.8
 1025.9
 1026.0
 1026.1
 1026.2
 1026.3
 1026.4
 1026.5
 1026.6
 1026.7
 1026.8
 1026.9
 1027.0
 1027.1
 1027.2
 1027.3
 1027.4
 1027.5
 1027.6
 1027.7
 1027.8
 1027.9
 1028.0
 1028.1
 1028.2
 1028.3
 1028.4
 1028.5
 1028.6
 1028.7
 1028.8
 1028.9
 1029.0
 1029.1
 1029.2
 1029.3
 1029.4
 1029.5
 1029.6
 1029.7
 1029.8
 1029.9
 1030.0
 1030.1
 1030.2
 1030.3
 1030.4
 1030.5
 1030.6
 1030.7
 1030.8
 1030.9
 1031.0
 1031.1
 1031.2
 1031.3
 1031.4
 1031.5
 1031.6
 1031.7
 1031.8
 1031.9
 1032.0
 1032.1
 1032.2
 1032.3
 1032.4
 1032.5
 1032.6
 1032.7
 1032.8
 1032.9
 1033.0
 1033.1
 1033.2
 1033.3
 1033.4
 1033.5
 1033.6
 1033.7
 1033.8
 1033.9
 1034.0
 1034.1
 1034.2
 1034.3
 1034.4
 1034.5
 1034.6
 1034.7
 1034.8
 1034.9
 1035.0
 1035.1
 1035.2
 1035.3
 1035.4
 1035.5
 1035.6
 1035.7
 1035.8
 1035.9
 1036.0
 1036.1
 1036.2
 1036.3
 1036.4
 1036.5
 1036.6
 1036.7
 1036.8
 1036.9
 1037.0
 1037.1
 1037.2
 1037.3
 1037.4
 1037.5
 1037.6
 1037.7
 1037.8
 1037.9
 1038.0
 1038.1
 1038.2
 1038.3
 1038.4
 1038.5
 1038.6
 1038.7
 1038.8
 1038.9
 1039.0
 1039.1
 1039.2
 1039.3
 1039.4
 1039.5
 1039.6
 1039.7
 1039.8
 1039.9
 1040.0
 1040.1
 1040.2
 1040.3
 1040.4
 1040.5
 1040.6
 1040.7
 1040.8
 1040.9
 1041.0
 1041.1
 1041.2
 1041.3
 1041.4
 1041.5
 1041.6
 1041.7
 1041.8
 1041.9
 1042.0
 1042.1
 1042.2
 1042.3
 1042.4
 1042.5
 1042.6
 1042.7
 1042.8
 1042.9
 1043.0
 1043.1
 1043.2
 1043.3
 1043.4
 1043.5
 1043.6
 1043.7
 1043.8
 1043.9
 1044.0
 1044.1
 1044.2
 1044.3
 1044.4
 1044.5
 1044.6
 1044.7
 1044.8
 1044.9
 1045.0
 1045.1
 1045.2
 1045.3
 1045.4
 1045.5
 1045.6
 1045.7
 1045.8
 1045.9
 1046.0
 1046.1
 1046.2
 1046.3
 1046.4
 1046.5
 1046.6
 1046.7
 1046.8
 1046.9
 1047.0
 1047.1
 1047.2
 1047.3
 1047.4
 1047.5
 1047.6
 1047.7
 1047.8
 1047.9
 1048.0
 1048.1
 1048.2
 1048.3
 1048.4
 1048.5
 1048.6
 1048.7
 1048.8
 1048.9
 1049.0
 1049.1
 1049.2
 1049.3
 1049.4
 1049.5
 1049.6
 1049.7
 1049.8
 1049.9
 1050.0
 1050.1
 1050.2
 1050.3
 1050.4
 1050.5
 1050.6
 1050.7
 1050.8
 1050.9
 1051.0
 1051.1
 1051.2
 1051.3
 1051.4
 1051.5
 1051.6
 1051.7
 1051.8
 1051.9
 1052.0
 1052.1
 1052.2
 1052.3
 1052.4
 1052.5
 1052.6
 1052.7
 1052.8
 1052.9
 1053.0
 1053.1
 1053.2
 1053.3
 1053.4
 1053.5
 1053.6
 1053.7
 1053.8
 1053.9
 1054.0
 1054.1
 1054.2
 1054.3
 1054.4
 1054.5
 1054.6
 1054.7
 1054.8
 1054.9
 1055.0
 1055.1
 1055.2
 1055.3
 1055.4
 1055.5
 1055.6
 1055.7
 1055.8
 1055.9
 1056.0
 1056.1
 1056.2
 1056.3
 1056.4
 1056.5
 1056.6
 1056.7
 1056.8
 1056.9
 1057.0
 1057.1
 1057.2
 1057.3
 1057.4
 1057.5
 1057.6
 1057.7
 1057.8
 1057.9
 1058.0
 1058.1
 1058.2
 1058.3
 1058.4
 1058.5
 1058.6
 1058.7
 1058.8
 1058.9
 1059.0
 1059.1
 1059.2
 1059.3
 1059.4
 1059.5
 1059.6
 1059.7
 1059.8
 1059.9
 1060.0
 1060.1
 1060.2
 1060.3
 1060.4
 1060.5
 1060.6
 1060.7
 1060.8
 1060.9
 1061.0
 1061.1
 1061.2
 1061.3
 1061.4
 1061.5
 1061.6
 1061.7
 1061.8
 1061.9
 1062.0
 1062.1
 1062.2
 1062.3
 1062.4
 1062.5
 1062.6
 1062.7
 1062.8
 1062.9
 1063.0
 1063.1
 1063.2
 1063.3
 1063.4
 1063.5
 1063.6
 1063.7
 1063.8
 1063.9
 1064.0
 1064.1
 1064.2
 1064.3
 1064.4
 1064.5
 1064.6
 1064.7
 1064.8
 1064.9
 1065.0
 1065.1
 1065.2
 1065.3
 1065.4
 1065.5
 1065.6
 1065.7
 1065.8
 1065.9
 1066.0
 1066.1
 1066.2
 1066.3
 1066.4
 1066.5
 1066.6
 1066.7
 1066.8
 1066.9
 1067.0
 1067.1
 1067.2
 1067.3
 1067.4
 1067.5
 1067.6
 1067.7
 1067.8
 1067.9
 1068.0
 1068.1
 1068.2
 1068.3
 1068.4
 1068.5
 1068.6
 1068.7
 1068.8
 1068.9
 1069.0
 1069.1
 1069.2
 1069.3
 1069.4
 1069.5
 1069.6
 1069.7
 1069.8
 1069.9
 1070.0
 1070.1
 1070.2
 1070.3
 1070.4
 1070.5
 1070.6
 1070.7
 1070.8
 1070.9
 1071.0
 1071.1
 1071.2
 1071.3
 1071.4
 1071.5
 1071.6
 1071.7
 1071.8
 1071.9
 1072.0
 1072.1
 1072.2
 1072.3
 1072.4
 1072.5
 1072.6
 1072.7
 1072.8
 1072.9
 1073.0
 1073.1
 1073.2
 1073.3
 1073.4
 1073.5
 1073.6
 1073.7
 1073.8
 1073.9
 1074.0
 1074.1
 1074.2
 1074.3
 1074.4
 1074.5
 1074.6
 1074.7
 1074.8
 1074.9
 1075.0
 1075.1
 1075.2
 1075.3
 1075.4
 1075.5
 1075.6
 1075.7
 1075.8
 1075.9
 1076.0
 1076.1
 1076.2
 1076.3
 1076.4
 1076.5
 1076.6
 1076.7
 1076.8
 1076.9
 1077.0
 1077.1
 1077.2
 1077.3
 1077.4
 1077.5
 1077.6
 1077.7
 1077.8
 1077.9
 1078.0
 1078.1
 1078.2
 1078.3
 1078.4
 1078.5
 1078.6
 1078.7
 1078.8
 1078.9
 1079.0
 1079.1
 1079.2
 1079.3
 1079.4
 1079.5
 1079.6
 1079.7
 1079.8
 1079.9
 1080.0
 1080.1
 1080.2
 1080.3
 1080.4
 1080.5
 1080.6
 1080.7
 1080.8
 1080.9
 1081.0
 1081.1
 1081.2
 1081.3
 1081.4
 1081.5
 1081.6
 1081.7
 1081.8
 1081.9
 1082.0
 1082.1
 1082.2
 1082.3
 1082.4
 1082.5
 1082.6
 1082.7
 1082.8
 1082.9
 1083.0
 1083.1
 1083.2
 1083.3
 1083.4
 1083.5
 1083.6
 1083.7
 1083.8
 1083.9
 1084.0
 1084.1
 1084.2
 1084.3
 1084.4
 1084.5
 1084.6
 1084.7
 1084.8
 1084.9
 1085.0
 1085.1
 1085.2
 1085.3
 1085.4
 1085.5
 1085.6
 1085.7
 1085.8
 1085.9
 1086.0
 1086.1
 1086.2
 1086.3
 1086.4
 1086.5
 1086.6
 1086.7
 1086.8
 1086.9
 1087.0
 1087.1
 1087.2
 1087.3
 1087.4
 1087.5
 1087.6
 1087.7
 1087.8
 1087.9
 1088.0
 1088.1
 1088.2
 1088.3
 1088.4
 1088.5
 1088.6
 1088.7
 1088.8
 1088.9
 1089.0
 1089.1
 1089.2
 1089.3
 1089.4
 1089.5
 1089.6
 1089.7
 1089.8
 1089.9
 1090.0
 1090.1
 1090.2
 1090.3
 1090.4
 1090.5
 1090.6
 1090.7
 1090.8
 1090.9
 1091.0
 1091.1
 1091.2
 1091.3
 1091.4
 1091.5
 1091.6
 1091.7
 1091.8
 1091.9
 1092.0
 1092.1
 1092.2
 1092.3
 1092.4
 1092.5
 1092.6
 1092.7
 1092.8
 1092.9
 1093.0
 1093.1
 1093.2
 1093.3
 1093.4
 1093.5
 1093.6
 1093.7
 1093.8
 1093.9
 1094.0
 1094.1
 1094.2
 1094.3
 1094.4
 1094.5
 1094.6
 1094.7
 1094.8
 1094.9
 1095.0
 1095.1
 1095.2
 1095.3
 1095.4
 1095.5
 1095.6
 1095.7