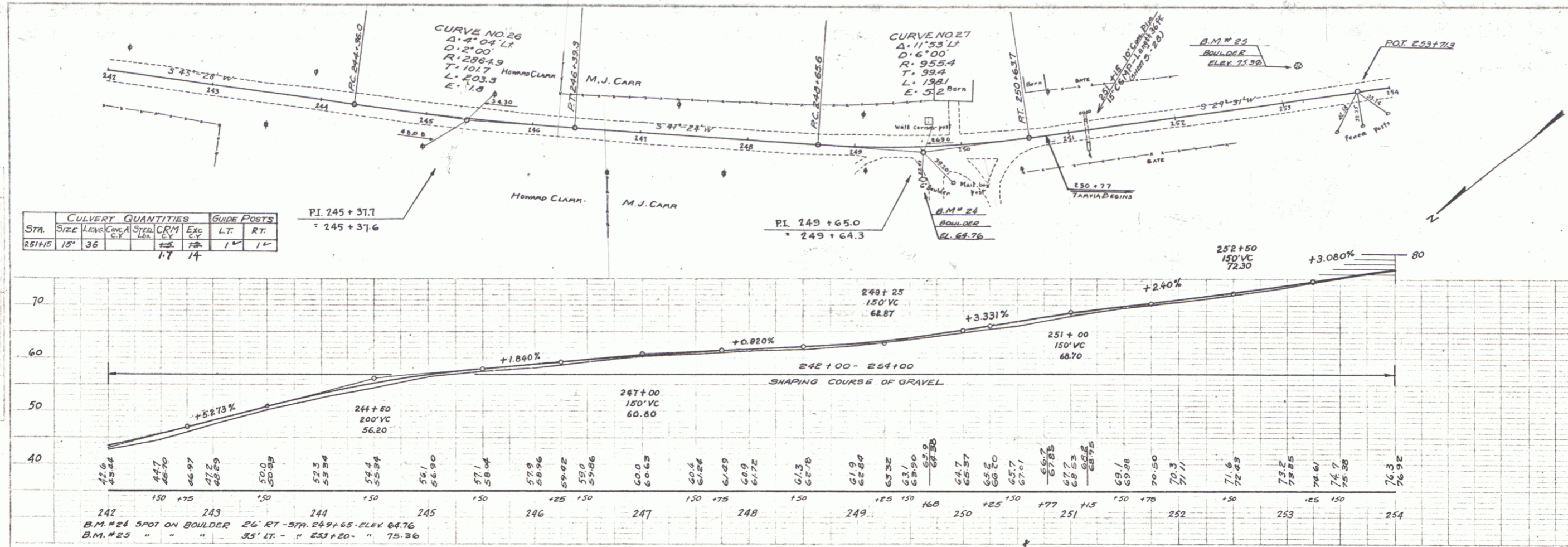


PLAN  
 SHEET NO. 142  
 DIST. NO. 9  
 STATE VT.  
 YEAR 1938  
 SHEET NO. 7  
 TOTAL SHEETS 84

STN.	CULVERT QUANTITIES				GUIDE POSTS	
	SIZE	LAWS	CRMS	EXC.	LT.	RT.
251+15	18"	36"	1.7	1.4		

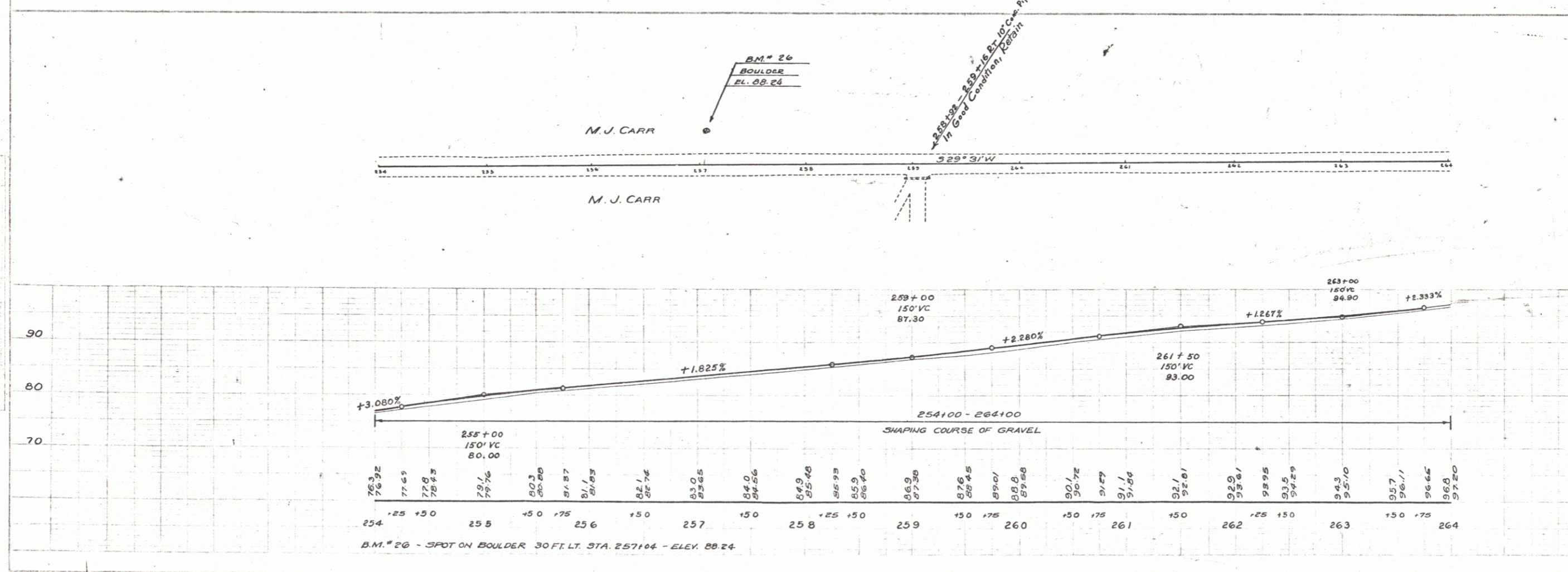


B.M. #24 SPOT ON BOULDER 26' RT. - STA. 249+65 - ELEV. 64.76  
 B.M. #25 " " " 35' LT. - " 243+20 - " 75.36

FED. ROAD DIST. NO. 9 STATE VT. YEAR 1938 SHEET NO. 7 TOTAL SHEETS 84

TOWN OF ADDISON  
 SERIES NRS No. 142  
 Sheet 7 of 34

PLAN  
 SHEET NO. 142  
 DIST. NO. 9  
 STATE VT.  
 YEAR 1938  
 SHEET NO. 7  
 TOTAL SHEETS 84



B.M. #26 - SPOT ON BOULDER 30 FT. LT. STA. 257+04 - ELEV. 88.24

FED. ROAD DIST. NO. 9 STATE VT. YEAR 1938 SHEET NO. 7 TOTAL SHEETS 84

TOWN OF ADDISON  
 SERIES NRS No. 142  
 Sheet 8 of 34