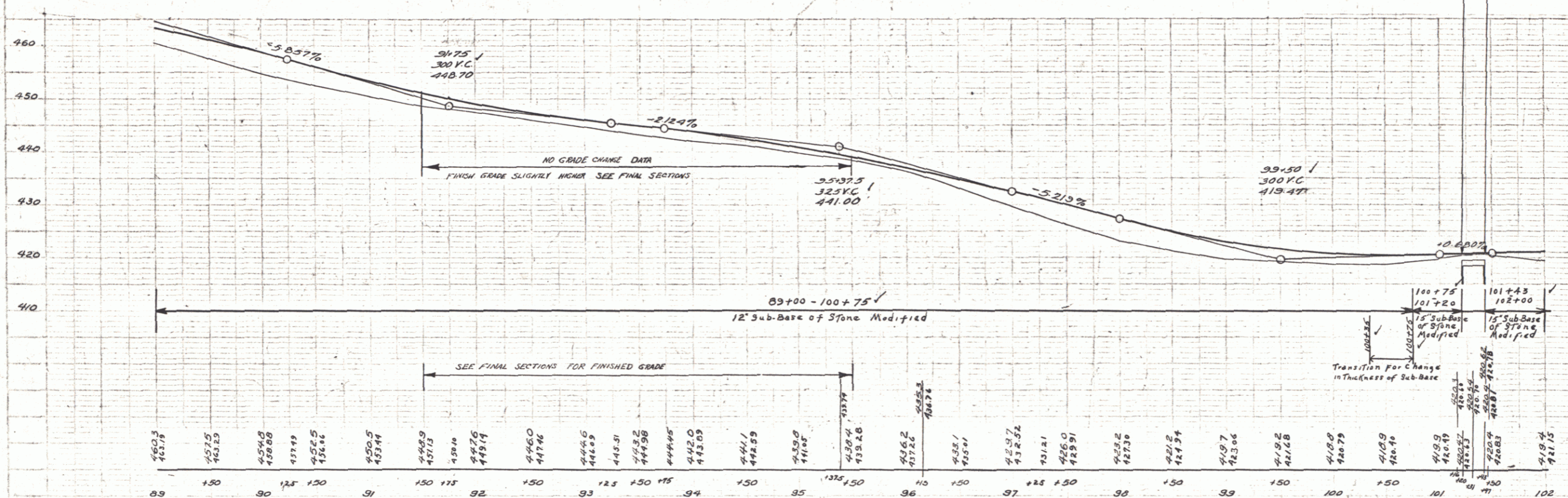
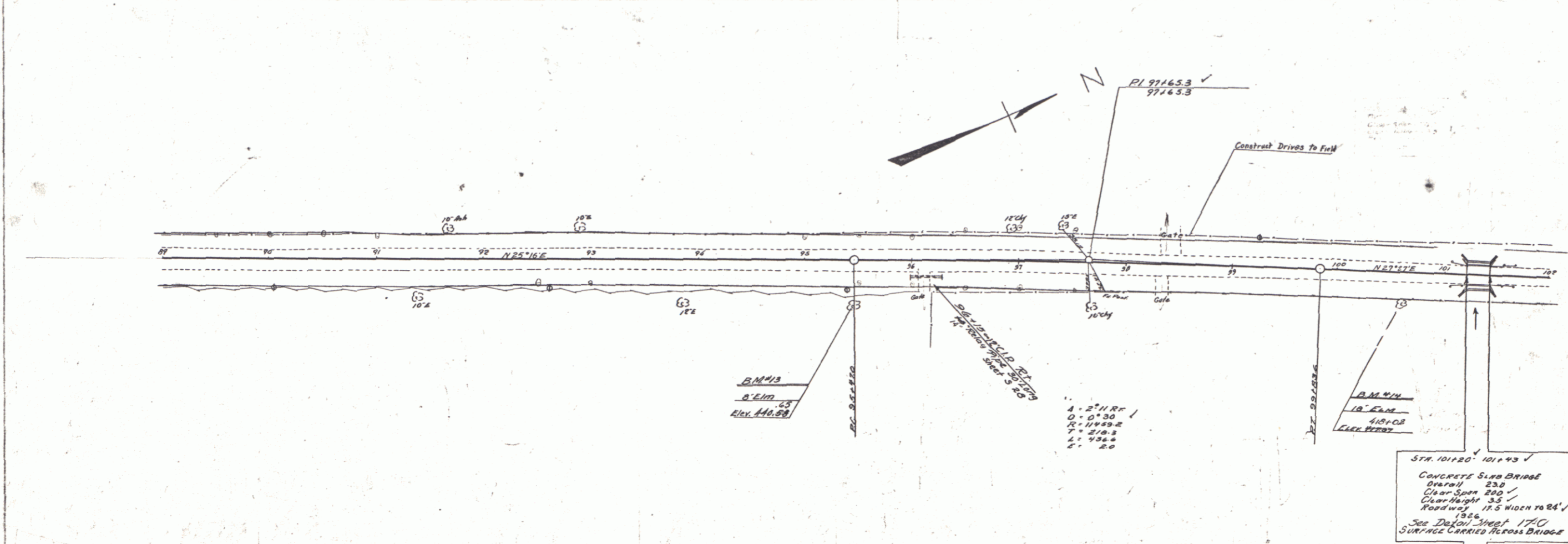


A.D. Wood
 Civil Engineer
 187 Bailey
 1000
 1000
 1000

A.D. Wood
 Civil Engineer
 187 Bailey
 1000
 1000
 1000



B.M. #13 SPIKE IN TRUNK 8" ELM. 38.5 FT. RT. STA. 95+43 ELEV. 440.50
 B.M. #14 SPIKE IN ROOT 18" ELM. 24.5 FT. RT. STA. 100+63 ELEV. 412.34
 418.02