

INDEX OF SHEETS

SHEET NO. 1	TITLE PAGE
2	TYPICAL CROSS-SECTION OF IMPROVEMENT
3	BANKING AND WIDENING TABLES
4-12	PLAN AND PROFILE STA.
13	STANDARD STRUCTURE SHEET 5-25 PIPE CULVERTS
14	" " " 5-30 GUARD RAIL
15	" " " 5-30-9 BOUNDARY MARKERS
16	" " " 5-40 BARRICADES, ETC.
17	" " " 5-61 ROUNDINGS OF SLOPES
17A	" " " 5C2-4 DETAILS, 4x5' R.C. BOX.
17-B	DETAIL SHEET, 4x5' R.C. BOX.
17-C	DETAIL SHEET OF BRIDGE STA 101+20 - STA 101+45
18-27	CROSS SECTIONS
STANDARD STRUCTURE SHEETS APPROVED BY THE CHIEF ENGINEER:	
3-29 May 14, 1933	
3-30 May 15, 1933	

FED. ROAD DIST. NO.	STATE	F.A.S. PROJ. NO.	FISCAL YEAR	SHEET NO.	TOTAL SHEETS
9	VT.	18-A	1933	1	47

STATE OF VERMONT
STATE HIGHWAY DEPARTMENT
PLAN AND PROFILE OF PROPOSED
STATE HIGHWAY
 FEDERAL AID SECONDARY PROJECT

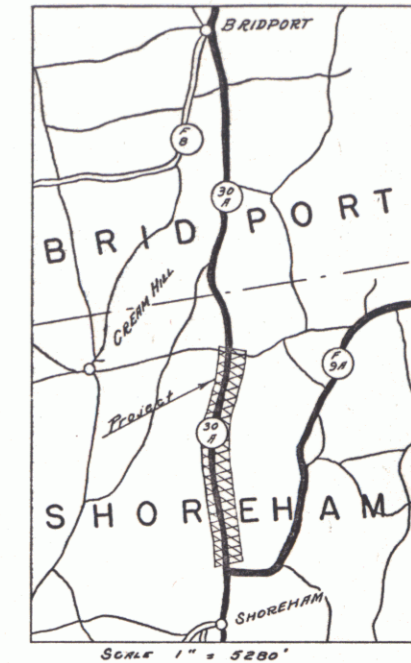
TOWN OF SHOREHAM

ADDISON - ORWELL ROAD

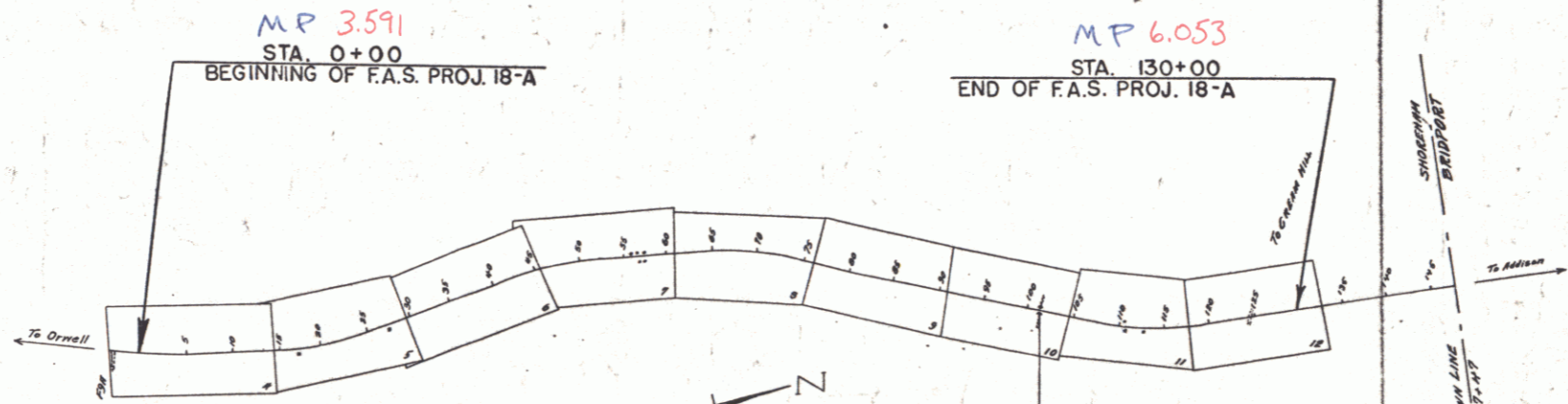
BEGINNING AT A POINT 290 FT. NORTH OF THE INTERSECTION OF ROUTE 30 A WITH ROUTE F9 A & EXTENDING NORTHERLY 2.461 MI. TO A POINT 1747 FT. SOUTH OF THE SHOREHAM-BRIDPORT TOWN LINE.

Route **VT 22A**

Proj: **00RS67**



LENGTH OF PROJECT ----- 12999.2 FEET = 2.461 MILES



CORRECTED AS PER RECORD PLAN

RIGHT-OF-WAY DIVISION
TOWN FILE
PERPETUAL
 Town of **VT 22A**
 (To Be Returned To R.O.W. Division)

APPROVED: July 6, 1933
F. E. August
 COMMISSIONER OF HIGHWAYS
 SUBMITTED BY ORDER OF THE STATE HIGHWAY BOARD

CONVENTIONAL SIGNS

COUNTY LINE
TOWN LINE
FENCE LINE
STONE WALL
UNFENCED PROPERTY
GUARD RAIL
TRAVELED WAY
RAILROAD
RETAINING WALL
CENTER LINE
SURVEY LINE
CULVERT
DROP INLET
TROLLEY POLE
POWER POLE
TELEPHONE POLE
TREES
HEDGE

GROUND ELEVATION	DATUM	LINE
GRADE ELEVATION	DATUM	LINE

CURVE DATA

DEFLECTION ANGLE
DEGREE OF CURVE
RADIUS OF CURVE
TANGENT DISTANCE
LENGTH OF CURVE
EXTERNAL DISTANCE
POINT OF INTERSECTION	P. I.
POINT OF CURVE	P. C.
POINT OF TANGENT	P. T.
POINT ON TANGENT	P. O. T.

SCALES

Title	1" = 1000'
Typical	1" = 2'
Plan	1" = 50'
Profile	Hor. 1" = 50'
	Ver. 1" = 10'
Cross Sections	1" = 5'

Sta. 101+20 - 101+45
CONCRETE SLAB BRIDGE
 Overall 23.0
 Clear Span 20.0
 Clear Height 3.0
 Roadway 14.6 Width to 14'
 See Detail Sheet 17-C
 Surface Carried Across Bridge

These plans are subject to such revisions as may be required by the Bureau of Public Roads or the Commissioner of Highways. Construction is to be carried on in accordance with the plans & the Standard Road & Bridge Specifications of 1936 as approved Dec. 29, 1936 by the Bureau of Public Roads including all subsequent approved revisions & such revised specifications & special provisions as are submitted with the plans.

CORRECT July 5, 1933
W. H. ...
 ROAD ENGINEER

APPROVED July 25, 1933
...
 DISTRICT HIGHWAY ENGINEER

SERIES **FAS NO. 18-A** FILED
 SHEET **(1)** OF **47**

VT 22A