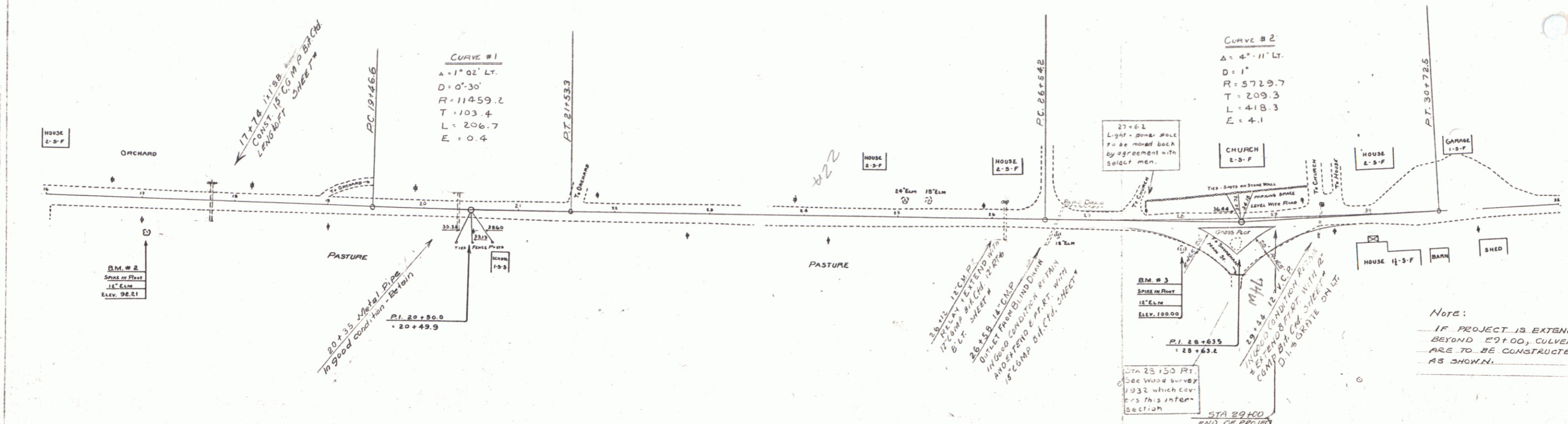
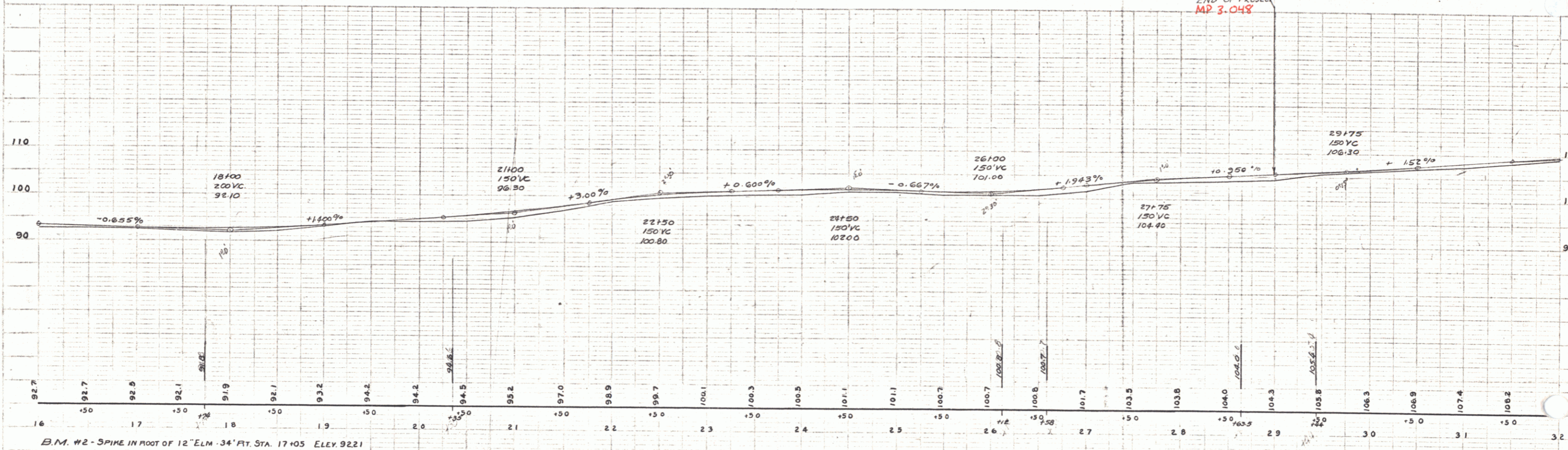




NOTE:  
STA 27+50 - 29+50  
CONST. INTERSECTION AS SHOWN



NOTE:  
IF PROJECT IS EXTENDED  
BEYOND ST 29+00, CULVERTS  
ARE TO BE CONSTRUCTED  
AS SHOWN.



B.M. #2 - SPIKE IN FOOT OF 12" ELM - 34' FT. STA. 17+05 ELEV. 92.21  
 B.M. #3 - SPIKE IN FOOT OF 12" ELM - 27' FT. STA. 28+00 ELEV. 100.00

PUTNAM  
F.W. JENNARD  
9/1933

PUTNAM  
F.W. JENNARD  
9/1933

