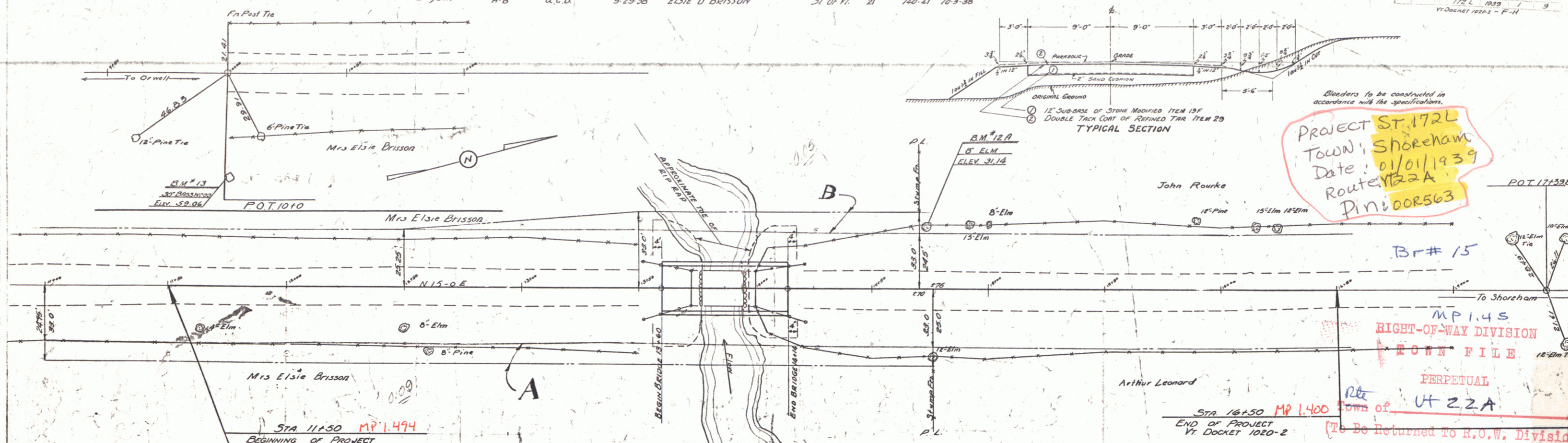


PARCEL INSTRUMENT DATE GRANTEE RECORDED REMARK
 Mrs. Elsie Bryson A-B a.c.d. 9-29-38 ELSIE D BRISSON 57 OF VT. SHOREHAM PAGE 21 DATE 10-3-38

PROJECT ST. 172L
 TOWN, SHOREHAM
 Date: 01/01/1939
 Route: VT 22A
 PIN 600563



ST. 111.50 MP 1.494
 BEGINNING OF PROJECT
 VT. DOCKET 1020-2

ITEM	QUANTITY	UNIT
SUB-BASE OF STONE MOD	111.50 TO 131.60 = 210 FT.	
	141.14 TO 161.50 = 236 FT.	
TOTAL	446 FT.	

INDEX OF SHEETS

1	PLAN & PROFILE
2	ABUTMENT DETAILS
3	57.8.20 NO. 45' TO 55' USE 50' CLEAR SPAN (MODIFIED-SEE SHEET NO. 2) (22' R/W'S)
4	5.8.50-CURB & RAIL
5	5.8.20-DETAILS B, C, E, F, I, & GEN. NOTES
6	3.8.11-BARRICADES, LIGHTS, ETC.
7	3.80-CABLE GUARD RAIL
8-9	CROSS SECTIONS

ESTIMATED QUANTITIES

ITEM	QUANTITY	UNIT
10-11	COMMON EXCAVATION INCLUDING BORROW	26000.0
15	CHANNEL EXCAVATION	160.0
16	STRUCTURE EXCAVATION	111.0
18	MAINTENANCE OF TRAFFIC	1.0
19 F	SUB-BASE OF STONE MODIFIED	320.0
29	DOUBLE TRACK CUT OF REFINED TAR	540.0
41 A	CONCRETE CLASS "A"	78.0
41 C	CONCRETE CLASS "C"	76.0
42	REINFORCING STEEL	28800.0
56	TEMPORARY BRIDGE	1.0
57	REMOVAL OF PRESENT SUPERSTRUCTURE	1.0
65	TIMBER PILING	1260.0
68	RIP RAP FOR BANK PROTECTION (HEAVY TYPE)	126.0
80 A	CABLE GUARD RAIL	560.0
80 B	ANCHORS FOR CABLE GUARD RAIL	4.0

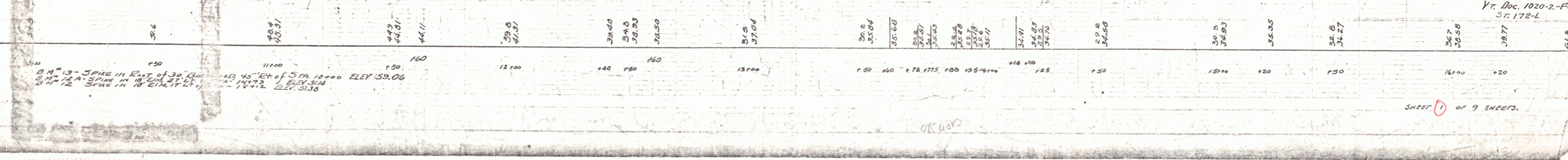
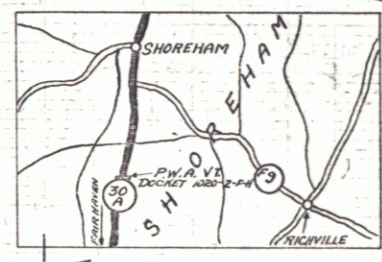
APPROVED: Jan. 15, 1938
 E. A. Bishop
 BRIDGE ENGINEER

CORRECTED: 1938
 A. D. Bishop
 BRIDGE ENGINEER

APPROVED: Aug 6, 1938
 H. C. Bishop
 COMMISSIONER OF HIGHWAYS

BRIDGE DATA

TYPE	PRESENT	PROPOSED
SPANS (CLEAR)	1 @ 17.5	1 @ 50
CLEAR HEIGHT	5.4	8.5
WATERWAY LENGTH	91.8	150 + 190
LENGTH OVERALL	26.5	51.0
ROADWAY WIDTH	15	22.0



DIST. # 5 PLANS