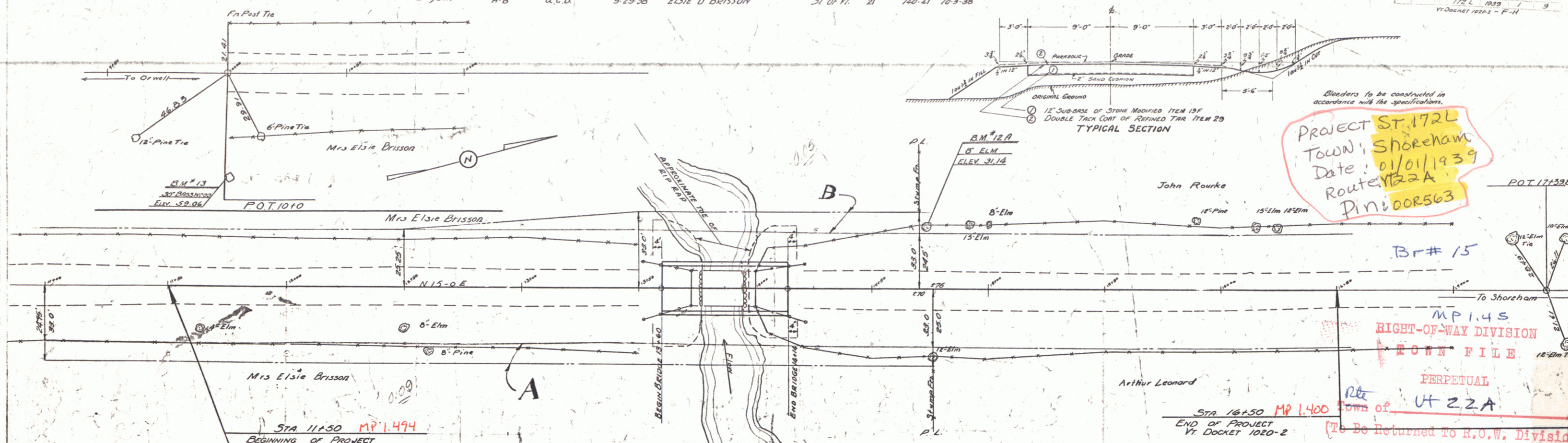


PARCEL INSTRUMENT DATE GRANTEE RECORDED REMARK
 Mrs. Elsie Bryson A-B a.c.d. 9-29-38 ELSIE D BRISSON 57 OF VT. SHOREHAM PAGE DATE
 21 100-41 10-3-38

PROJECT ST. 172L
 TOWN, SHOREHAM
 Date: 01/01/1939
 Route: VT 22A
 PIN 00R563



INDEX OF SHEETS

SHEET 1 PLAN & PROFILE
 2 ABUTMENT DETAILS
 3 S.T.B. 20 NO. 45' TO 55' USE 50' CLEAR SPAN (MODIFIED-SEE SHEET NO. 2) (22' R/W'S)
 4 S.B. 50-CURB & RAIL
 5 S.B. 20-DETAILS B, C, E, F, L, & GEN. NOTES
 6 S.B. 11-BARRICADES, LIGHTS, ETC.
 7 330-CABLE GUARD RAIL
 8-9 CROSS SECTIONS.

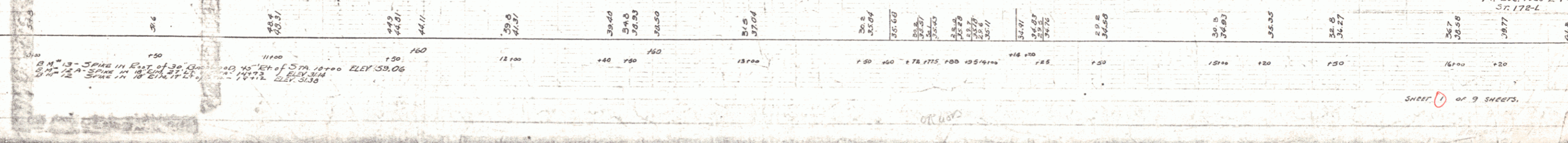
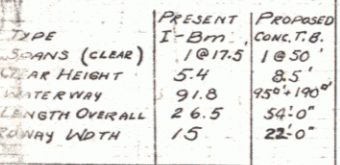
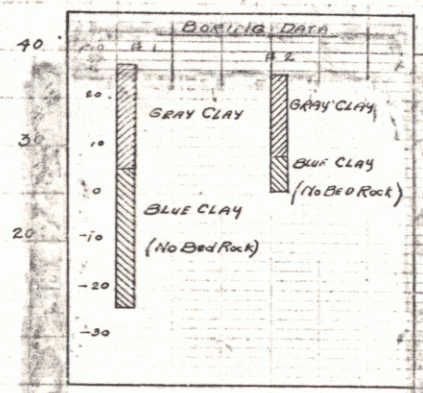
ESTIMATED QUANTITIES

ITEM	DESCRIPTION	QUANTITY
10-11	COMMON EXCAVATION INCLUDING BORROW	26000 CY
15	CHANNEL EXCAVATION	160 CY
16	STRUCTURE EXCAVATION	111 CY
18	MAINTENANCE OF TRAFFIC	1 L.S.
19 F	SUB-BASE OF STONE MODIFIED	320 CY
29	DOUBLE TRACK COAT REFINED TAR	540 GAL
41 A	CONCRETE CLASS "A"	73 CY
41 C	CONCRETE CLASS "C"	76 CY
42	REINFORCING STEEL	28800 LBS.
56	TEMPORARY BRIDGE	1 L.S.
57	REMOVAL OF PRESENT SUPERSTRUCTURE	1 L.S.
65	TIMBER PILING	1260 L.F.
68	RIP RAP FOR BANK PROTECTION (HEAVY TYPE)	126 CY
80 A	CABLE GUARD RAIL	560 L.F.
80 B	ANCHORS FOR CABLE GUARD RAIL	4 EA.

APPROVED: Jan. 15, 1938
 E. A. Bishop
 SURVEYOR GENERAL

CORRECTED: 1938
 A. D. Bishop
 BRIDGE ENGINEER

APPROVED: Aug 6, 1938
 H. C. Bishop
 COMMISSIONER OF HIGHWAYS



DIST. # 5 PLANS