

UNCLASSIFIED CHANNEL
EXCAVATION
24+55 L_A - 25+15 L_A ✓
24+80 R_A - 25+30 R_A ✓

REMOVAL OF PRESENT SUPERSTRUCTURE
STA 25+05.0 ✓

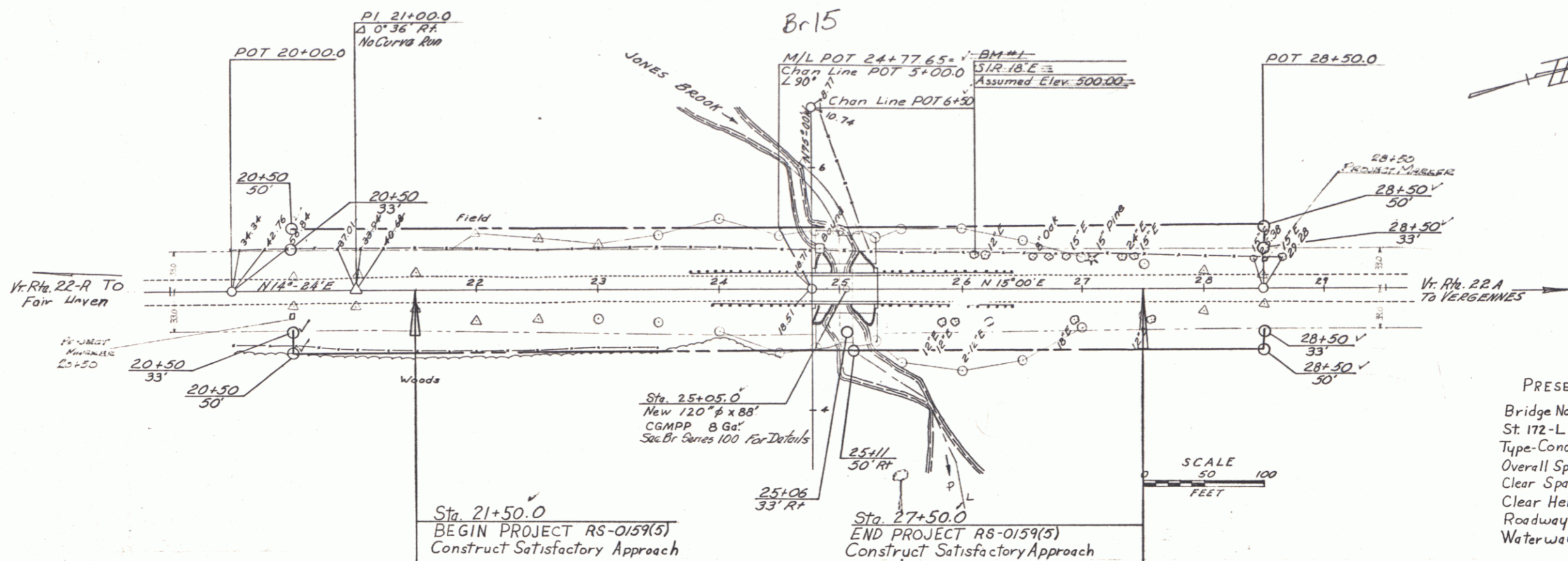
Three Cable Guard Rail w/ Wood Posts
L_T 24+00 - 25+60
R_T 24+38 - 25+50

Removal and Disposal of Present Guard Rail
L_T 23+76 - 24+71 ✓
R_T 23+94 - 24+71 ✓
25+35 - 26+44 ✓

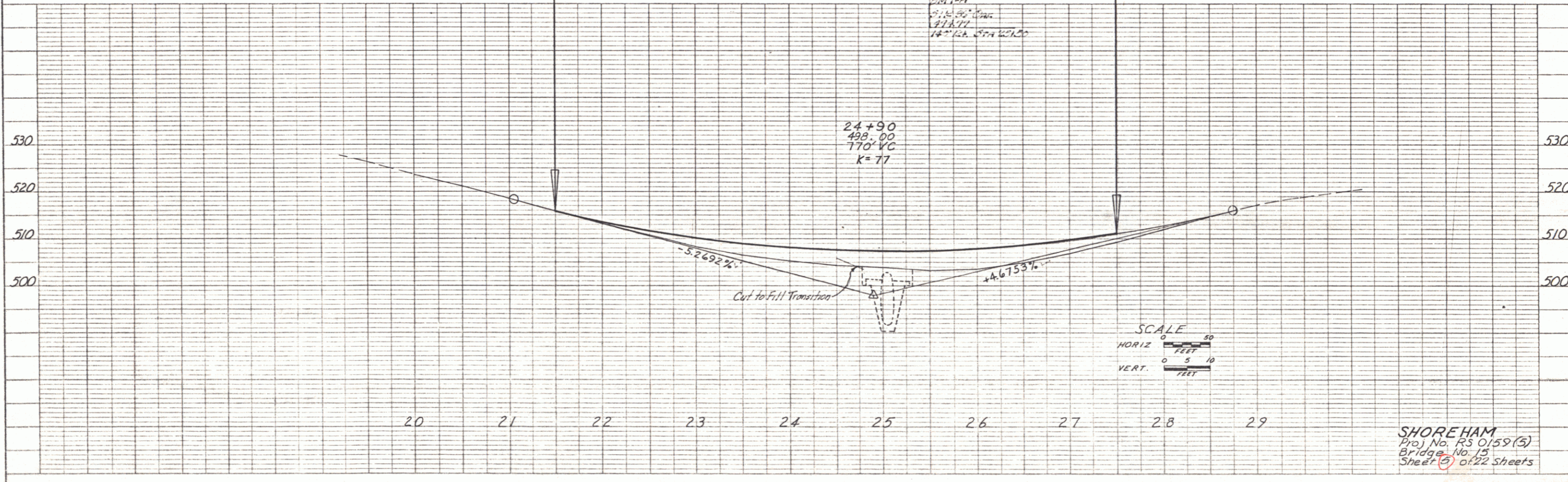
STONE FILL FOR SLOPE PROTECTION (Light Type)
L_T 24+80 - 25+30 ✓
R_T 24+80 - 25+30 ✓

PLAN
DATE: 8/8/88
BY: [Signature]
CHECKED: [Signature]
SCALE: AS SHOWN

PROFILE
DATE: 8/8/88
BY: [Signature]
CHECKED: [Signature]
SCALE: AS SHOWN



PRESENT BRIDGE DATA
Bridge No. 15 Built 1938
St. 172-L
Type-Concrete T Beam CC
Overall Span Sta 24+77.7 to Sta 25+31.4
Clear Span 50.0'
Clear Height 8.5'
Roadway Width 22'
Waterway 190'



SHOREHAM
Proj. No. RS 0159(5)
Bridge No. 15
Sheet 5 of 22 Sheets