

INDEX OF SHEETS

SHEET NO.	TITLE PAGE
1	TITLE PAGE
2	TYPICAL CROSS-SECTION OF IMPROVEMENT - 2 1/2" CRUSHED STONE MIXED-IN-PLACE SURFACE COURSE (ITEM 27, WITH CUTBACK ASPHALT, ITEM 31)
3	TYPICAL CROSS-SECTION OF IMPROVEMENT - ROADSIDE IMPROVEMENT FORCE ACCOUNT ITEMS
6	STANDARD STRUCTURE SHEET S-28 GROUND-TIMBER CURB, ITEM 98 & METAL D.I. ITEM 90
7	" " " " S-30 CABLE GUARD RAIL
8	" " " " S-30A STANDARD UNDERDRAIN
9	" " " " S-40 BARRICADES, SIGNS & LIGHTS
10	" " " " S-41 ROUNDING OF SLOPES
11-17	CROSS SECTIONS

STANDARD STRUCTURE SHEETS APPROVED
 BY THE CHIEF ENGINEER:
 STANDARD STRUCTURE SHEET 5-28 APPROVED 4-26-41
 " " " " 5-30A " 4-10-41
 " " " " 5-40 " 0-5-40
 " " " " 5-30 " 0-15-34

(To Be Returned To R.O.W. Division)
 Town of Waterford
 Vermont
 Right-of-Way Division

STATE OF VERMONT
 STATE HIGHWAY DEPARTMENT

PLAN AND PROFILE OF PROPOSED
 STATE HIGHWAY

FEDERAL AID PROJECT

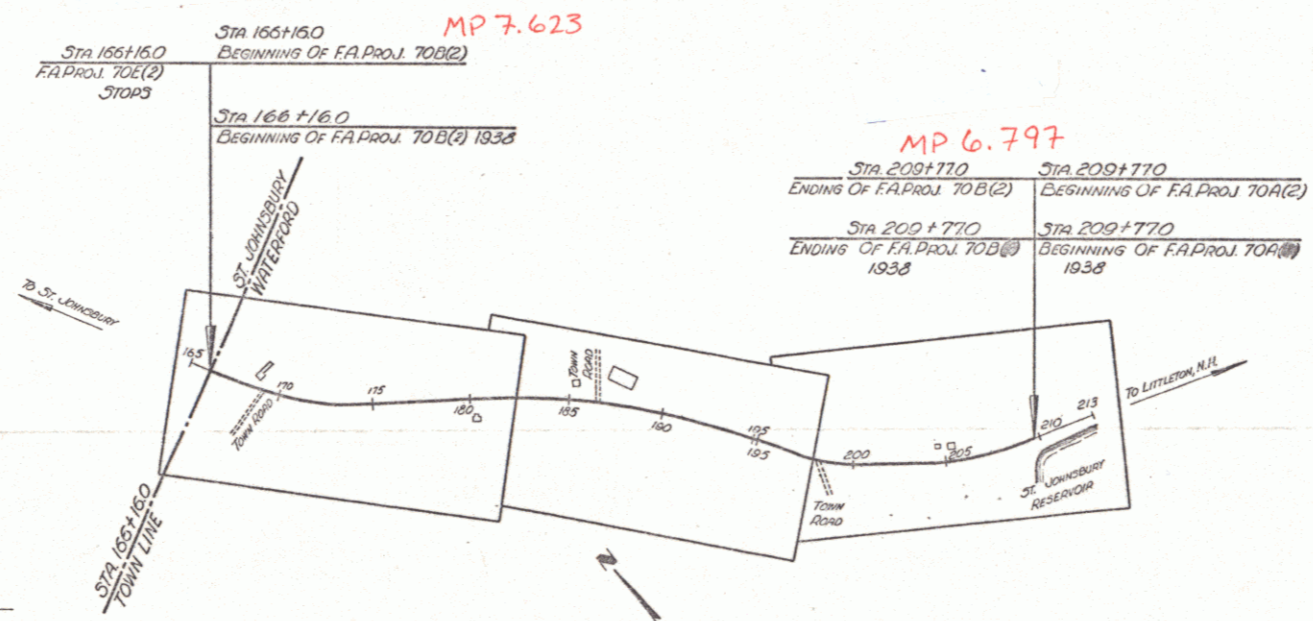
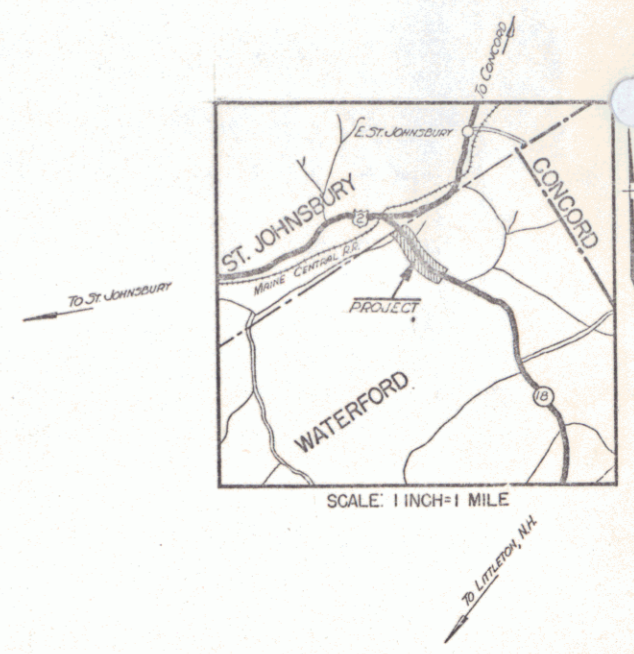
TOWN OF WATERFORD

VERMONT ROUTE 18

ST. JOHNSBURY, VT.-LITTLETON, N.H. ROAD
 BEGINNING AT THE ST. JOHNSBURY-WATERFORD TOWN LINE AND EXTENDING
 EASTERLY 0.830 MILES

LENGTH OF PROJECT: 4381.7 FEET=0.830 MILES.

FED. ROAD DIST. NO.	STATE	FED. AID PROJ. NO.	FISCAL YEAR	INSET	TOTAL SHEETS
9	Vt.	7002	1942	1	17



RECORD PLANS
 A.C.B. 5/14/42

APPROVED: July 2, 1941
 Commissioner of Highways
 SUBMITTED BY ORDER OF THE STATE HIGHWAY BOARD

CUT SLOPES	GROUND ELEVATION	GRADE ELEVATION
COUNTY LINE	BATH	LINE
TOWN LINE	BATH	LINE
FENCE LINE	BATH	LINE
STONE WALL	BATH	LINE
UNFENCED PROPERTY	BATH	LINE
GUARD RAIL	BATH	LINE
TRAVELED WAY	BATH	LINE
RAILROAD	BATH	LINE
RETAINING WALL	BATH	LINE
CENTER LINE	BATH	LINE
SURVEY LINE	BATH	LINE
CULVERT	BATH	LINE
DROP INLET	BATH	LINE
TROLLEY POLE	BATH	LINE
POWER POLE	BATH	LINE
TELEPHONE POLE	BATH	LINE
TREES	BATH	LINE
HEDGE	BATH	LINE

CURVE DATA

DEFLECTION ANGLE	DEGREE OF CURVE	RADIUS OF CURVE	TANGENT DISTANCE	LENGTH OF CURVE	EXTERNAL DISTANCE	POINT OF INTERSECTION	POINT OF CURVE	POINT OF TANGENT	POINT ON TANGENT
Δ	D	R	T	L	E	P. I.	P. C.	P. T.	P. O. T.

SCALES

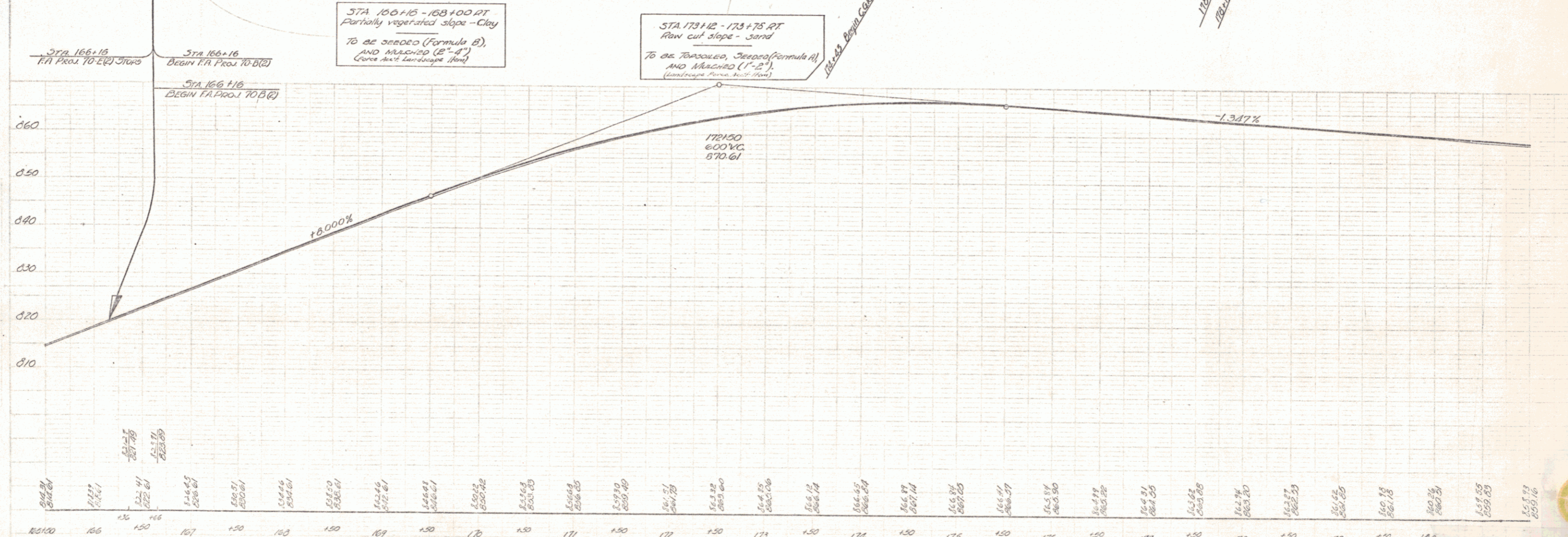
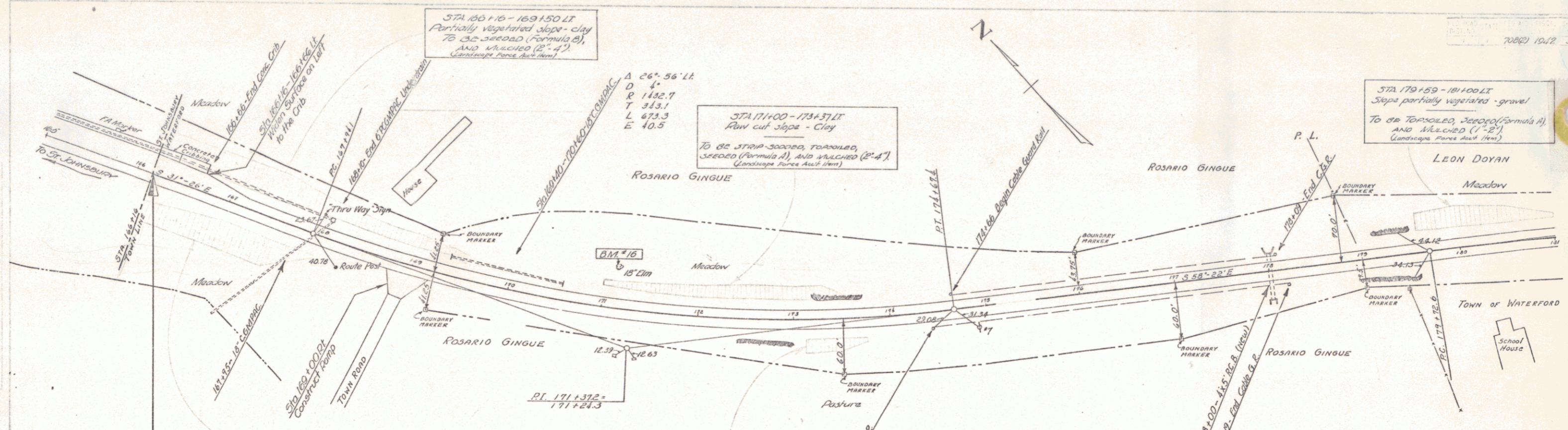
TITLE	1" = 500'
TYPICAL	1" = 2'
PLAN	1" = 50'
PROFILE HORIZONTAL	1" = 50'
PROFILE VERTICAL	1" = 10'
CROSS SECTIONS	1" = 2.5'

THESE PLANS ARE SUBJECT TO SUCH REVISIONS AS MAY BE REQUIRED BY THE PUBLIC ROADS ADMINISTRATION OR THE COMMISSIONER OF HIGHWAYS.

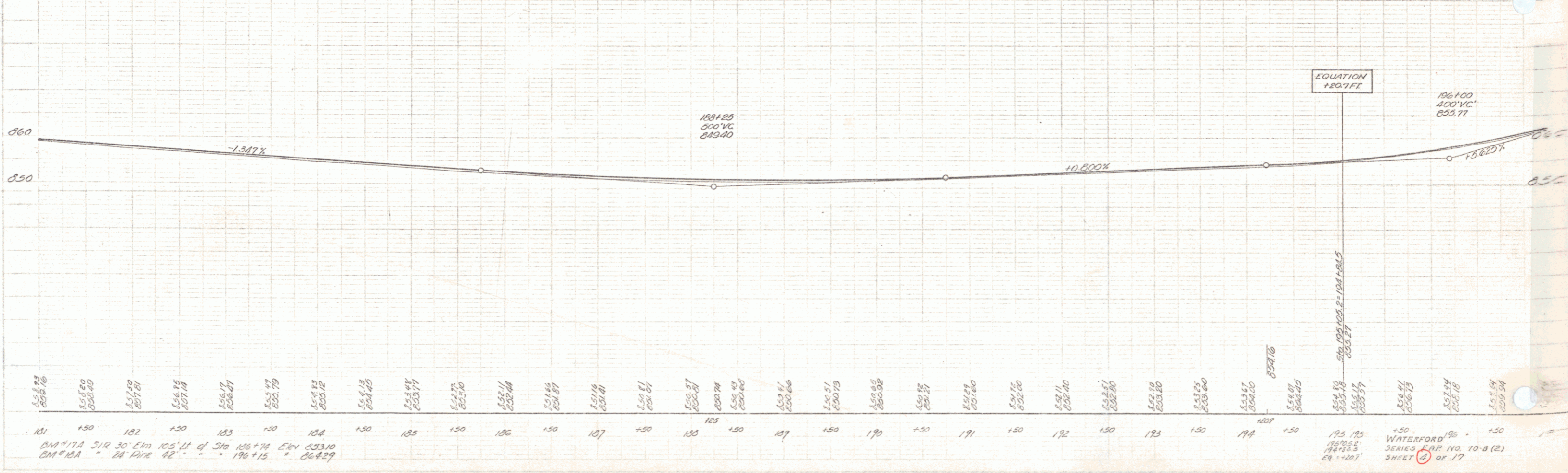
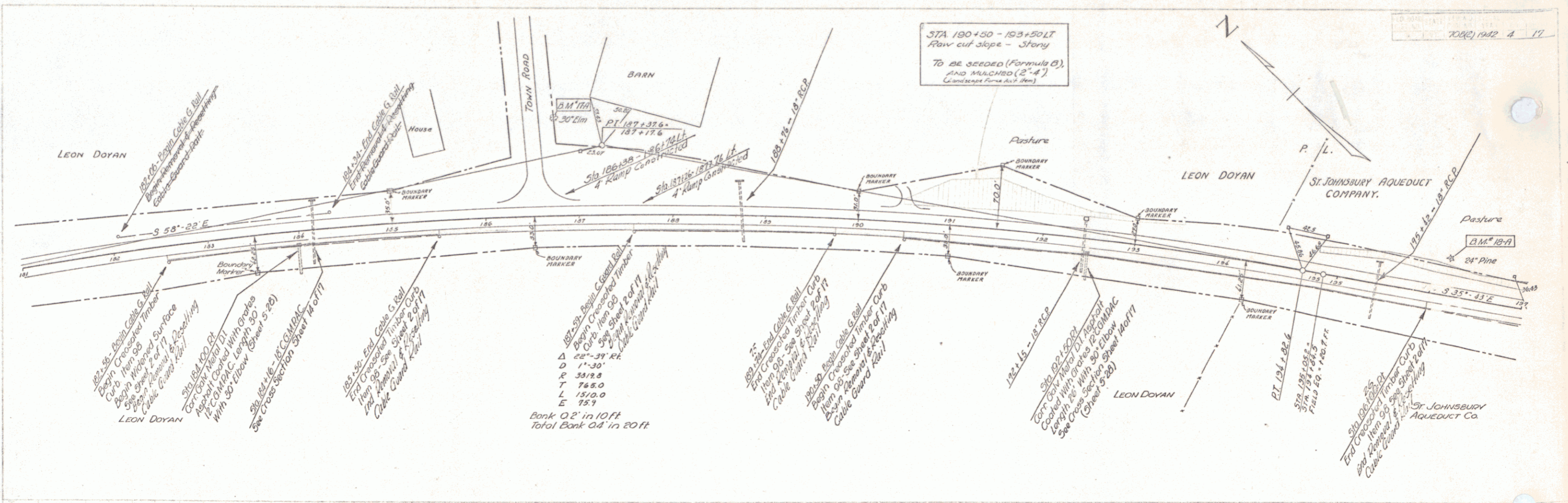
CONSTRUCTION IS TO BE CARRIED ON IN ACCORDANCE WITH THE PLANS AND THE STANDARD ROAD AND BRIDGE SPECIFICATIONS OF 1936, AS APPROVED DECEMBER 20TH, 1936 BY THE PUBLIC ROADS ADMINISTRATION, INCLUDING ALL SUBSEQUENT APPROVED REVISIONS AND SUCH REVISED SPECIFICATIONS AND SPECIAL PROVISIONS AS ARE SUBMITTED WITH THE PLANS.

APPROVED: July 2, 1941
 ROAD ENGINEER
 APPROVED: July 23, 1941
 DISTRICT HIGHWAY COMMISSIONER
 SERIES FAP NO. 7002 FILED
 SHEET 1 OF 17

DIST. # 9 PLANS 1



166+00	166	167	168	169	170	171	172	173	174	175	176	177	178	179	180	181
810.00	810.00	810.00	810.00	810.00	810.00	810.00	810.00	810.00	810.00	810.00	810.00	810.00	810.00	810.00	810.00	810.00



181	182	183	184	185	186	187	188	189	190	191	192	193	194	195	196	197
856.76	856.90	857.20	856.19	856.47	852.79	854.13	853.44	852.77	851.46	851.16	850.81	850.37	850.79	850.40	850.11	850.66
856.76	856.90	857.20	856.19	856.47	852.79	854.13	853.44	852.77	851.46	851.16	850.81	850.37	850.79	850.40	850.11	850.66

PLAN

Profile

