

INDEX OF SHEETS

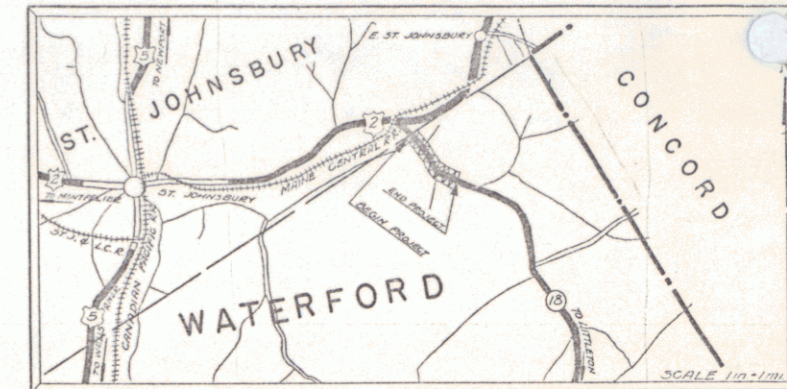
SHEET NO.	1	TITLE PAGE
"	2	TYPICAL CROSS-SECTION OF IMPROVEMENT <small>GRADINGS, DRAINAGE - BASE, & GUARD RAIL WITH DOUBLE TRACK CONC. & REFINED TAR (ITEM-29)</small>
"	3	BANKING AND WIDENING TABLES
"	4-6	PLAN AND PROFILE SHEETS
"	7	STANDARD STRUCTURE SHEET 3-28 PIPE CULVERTS
"	8	" " " " 3-30 GUARD RAIL & C.R.M. WALL
"	9	" " " " 3-31 BOUNDARY MARKERS
"	10	" " " " 3-40 BARRICADES, SIGNS & LIGHTS
"	11-24	CROSS SECTION SHEETS

STANDARD STRUCTURE SHEETS APPROVED
BY THE CHIEF ENGINEER
3-28 JULY 11, 1933
3-30 AUG 16, 1933
3-31 JULY 25, 1934

STATE OF VERMONT
STATE HIGHWAY DEPARTMENT
**PLAN AND PROFILE OF PROPOSED
STATE HIGHWAY**
FEDERAL AID PROJECT
TOWN OF WATERFORD
ST. JOHNSBURY VT. - LITTLETON NH ROAD

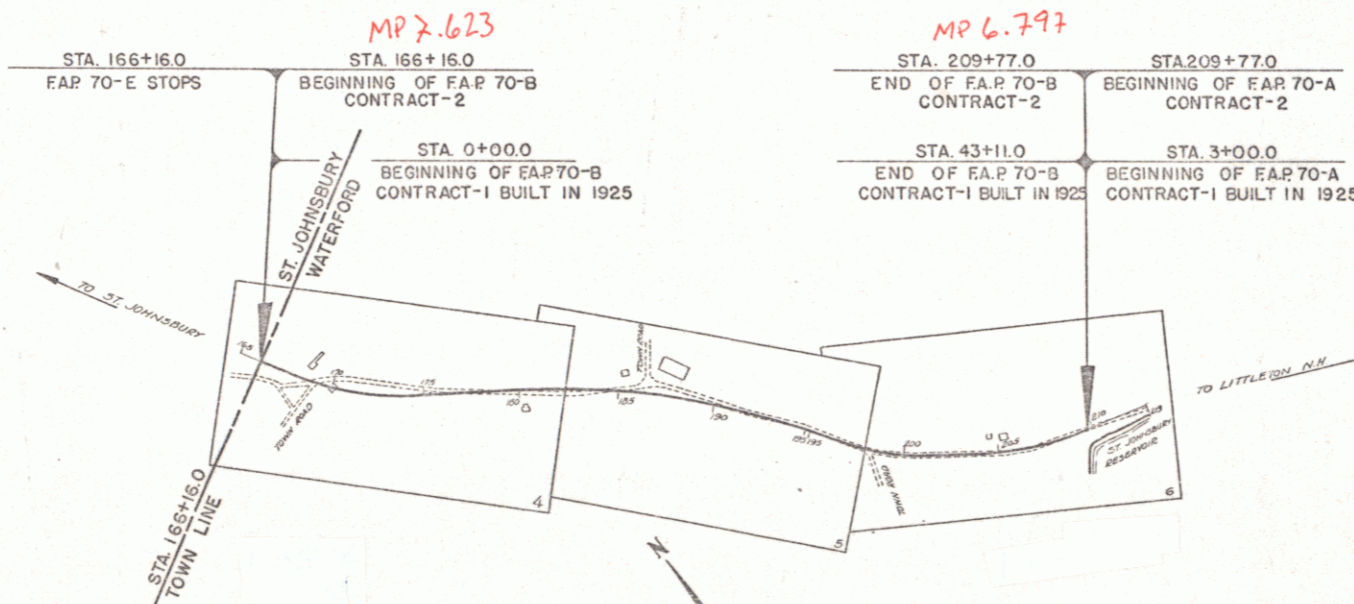
FED. ROAD DIST. NO.	STATE	FED. AID PROJ. NO.	FISCAL YEAR	SHEET NO.	TOTAL SHEETS
9	VT.	20-2	1937	1	24

CONTRACT-2



BEGINNING AT THE ST. JOHNSBURY-WATERFORD TOWN LINE AND EXTENDING
EASTERLY 0.830 MILES
LENGTH OF PROJECT 4383.4 FT. = 0.830 MILES

(To Be Returned to R.O.W. Division)
14-18
PERMIT
RIGHT-OF-WAY DIVISION
TOWN FILE



CONVENTIONAL SIGNS

COUNTY LINE	GROUND ELEVATION
TOWN LINE	TOWN LINE
FENCE LINE	FENCE LINE
STONE WALL	STONE WALL
UNFENCED PROPERTY	UNFENCED PROPERTY
GUARD RAIL	GUARD RAIL
TRAVELED WAY	TRAVELED WAY
RAILROAD	RAILROAD
RETAINING WALL	RETAINING WALL
CENTER LINE	CENTER LINE
SURVEY LINE	SURVEY LINE
CULVERT	CULVERT
DROP INLET	DROP INLET
TROLLEY POLE	TROLLEY POLE
POWER POLE	POWER POLE
TELEPHONE POLE	TELEPHONE POLE
TREES	TREES
HEDGE	HEDGE

CURVE DATA

DEFLECTION ANGLE	Δ
DEGREE OF CURVE	D
RADIUS OF CURVE	R
TANGENT DISTANCE	T
LENGTH OF CURVE	L
EXTERNAL DISTANCE	E
POINT OF INTERSECTION	P. I.
POINT OF CURVE	P. C.
POINT OF TANGENT	P. T.
POINT ON TANGENT	P. O. T.

SCALES

TITLE	1 IN. = 300 FT.
TYPICAL	1 IN. = 2 FT.
PLAN	1 IN. = 50 FT.
PROFILE	1 IN. = 10 FT.
CROSS SECTIONS	1 IN. = 3 FT.

THESE PLANS ARE SUBJECT TO SUCH REVISIONS AS MAY BE REQUIRED BY THE BUREAU OF PUBLIC ROADS OR THE COMMISSIONER OF HIGHWAYS. CONSTRUCTION IS TO BE CARRIED ON IN ACCORDANCE WITH THE PLANS AND STANDARD ROAD AND BRIDGE SPECIFICATIONS OF 1936 AS APPROVED DEC. 29, 1936 BY THE BUREAU OF PUBLIC ROADS INCLUDING ALL SUBSEQUENT APPROVED REVISIONS AND SUCH REVISED SPECIFICATIONS AND SPECIAL PROVISIONS AS ARE SUBMITTED WITH THE PLANS.



Pin # 008557

APPROVED: JUNE 1, 1937
H. E. Sargent
COMMISSIONER OF HIGHWAYS
SUBMITTED BY ORDER OF THE STATE HIGHWAY BOARD

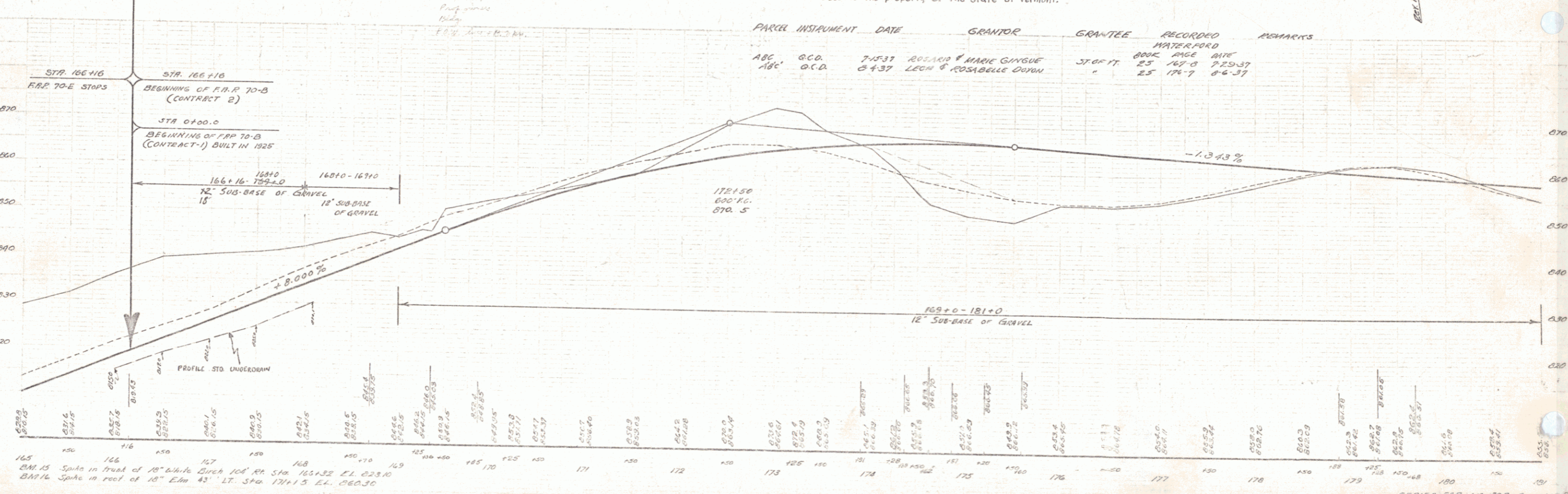
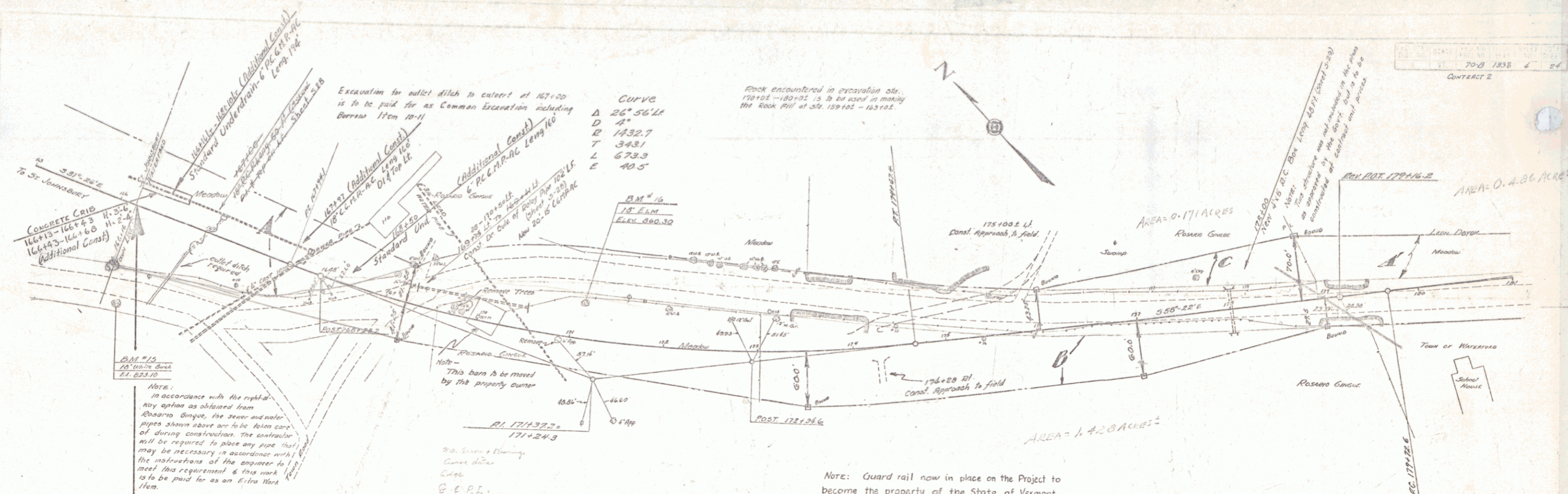
RECOMMENDED: _____
DISTRICT ENGINEER BUREAU OF PUBLIC ROADS
RECOMMENDED FOR APPROVAL: _____
CHIEF ENGINEER BUREAU OF ROADS
APPROVED: _____
DIRECTOR BUREAU OF PUBLIC ROADS

APPROVED: May 19, 1937
W. H. Allen
DISTRICT HIGHWAY COMMISSIONER

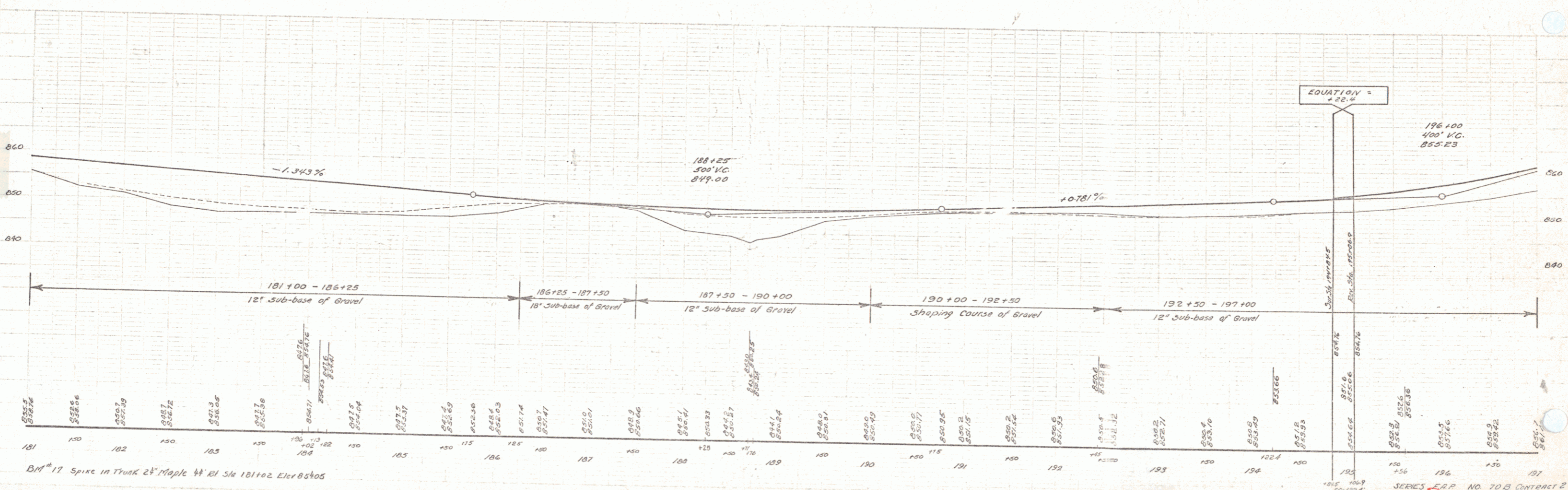
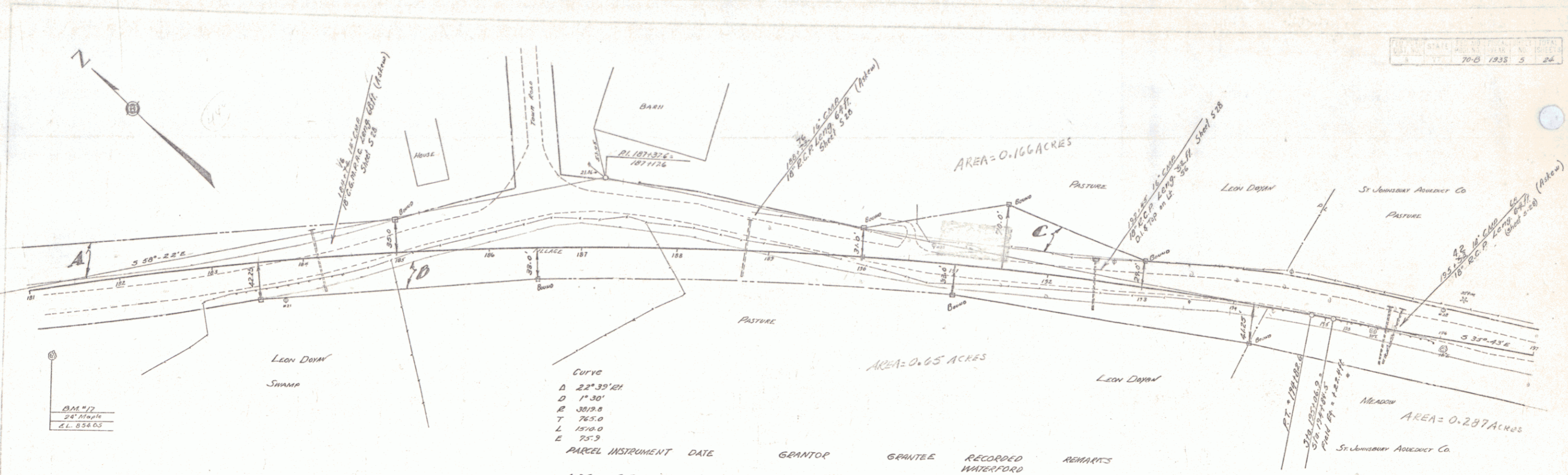
APPROVED: JUNE 1, 1937
W. H. Allen
DISTRICT ENGINEER

SERIES **FAP No. 70-B** FILED
SHEET **1** OF 24

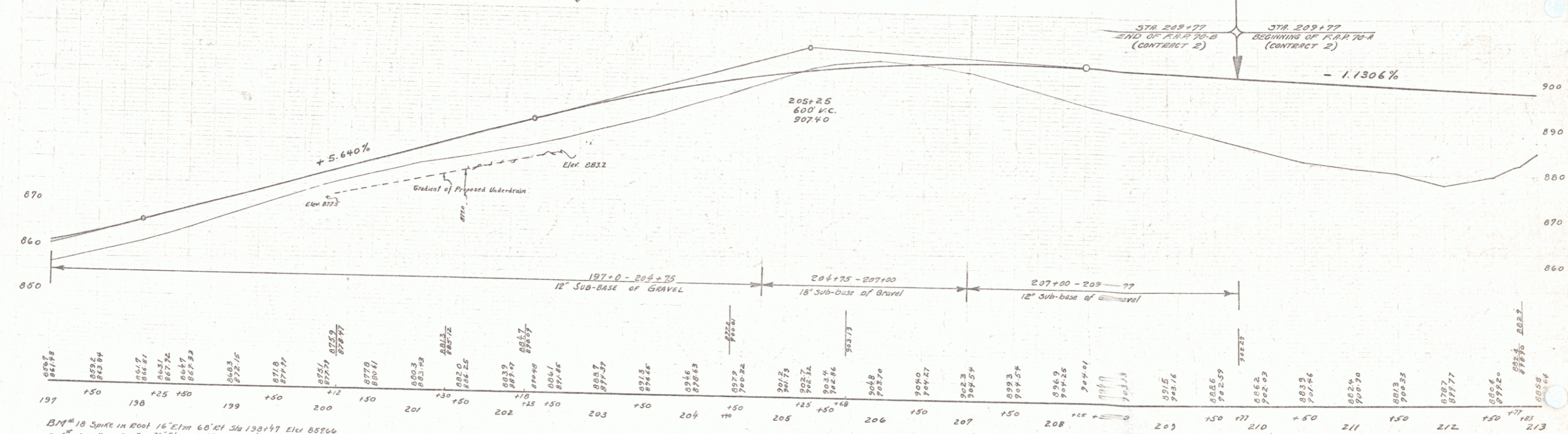
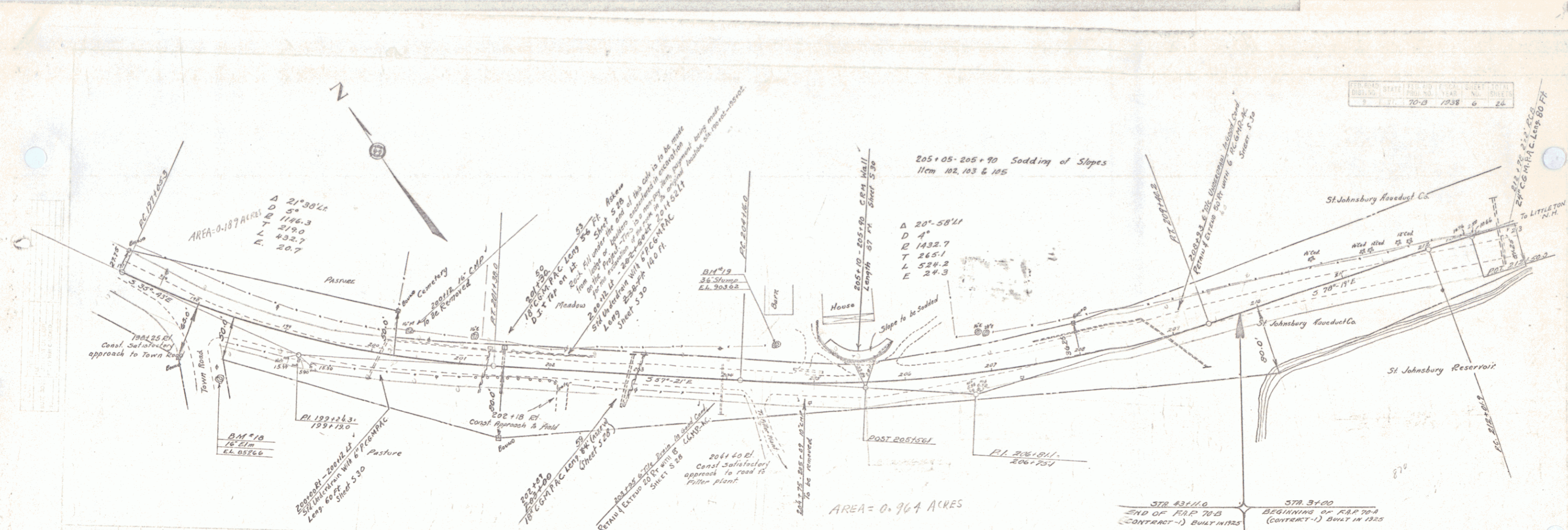
DIST. # 9



PARCEL	INSTRUMENT	DATE	GRANTOR	GRANTEE	RECORDED	REMARKS
ABC	O.C.D.	7-15-37	ROSLAND & MARIE GIVRIE	ST. OF VT.	BOOK PAGE DATE	WATERFORD 25 147-B 7-29-37
18c	O.C.D.	6-4-37	LEON & ROSABELLE DUNN	"	25 147-B 8-6-37	"



B.M. 17 Spike in Trunk 2 1/2" Maple 4 1/2" dia 181+02 Elev 894.05



BM #18 Spike in Root 16" Elm 60' Ct Sta 198+47 Elev 85566
 BM #19 " " " 36" Shump 36" Lt " 204+55 " 90302

INDEX OF SHEETS

SHEET NO.	TITLE PAGE
2	TYPICAL CROSS-SECTION OF IMPROVEMENT 3-6
3	PLAN AND PROFILE STA. 0+00 TO STA. 12+00
4	" " " " 12+00 " " 25+00
5	" " " " 25+00 " " 43+11
6 TO 16	CROSS SECTIONS

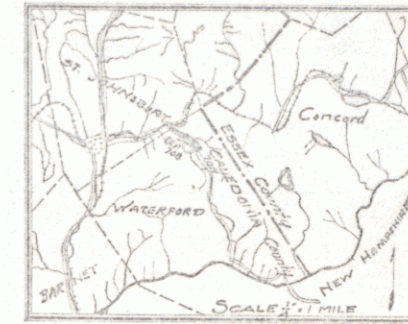
FED. AID DIST. NO.	STATE	FED. AID PROJ. NO.	YEAR	SHEET NO.	TOTAL SHEETS
9	Vt.	70-B	27	1	16

STATE OF VERMONT
STATE HIGHWAY DEPARTMENT

PLAN AND PROFILE OF PROPOSED
STATE HIGHWAY
FEDERAL AID PROJECT

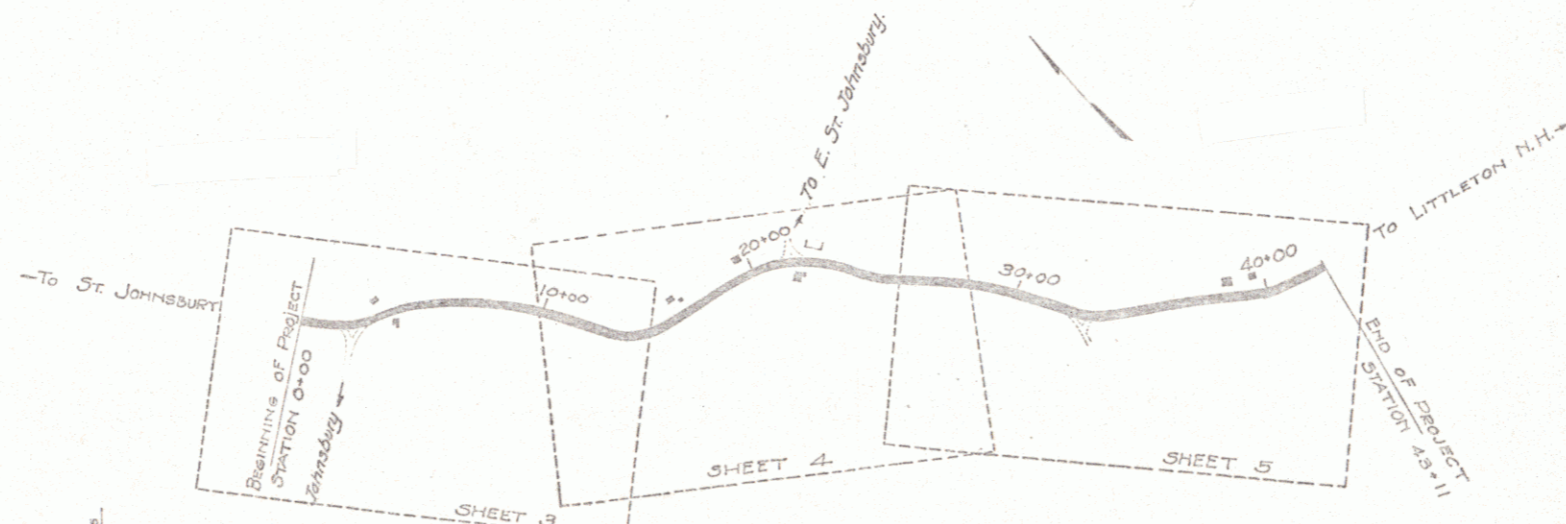
TOWN OF WATERFORD
STILES POND ROAD

FROM ST. JOHNSBURY TOWN LINE
TO BEGINNING OF F. A. P. 70-A.



(To Be Returned to H.O.W. Division)
Form of 418
PERMITAL
TOWN WITH
HIGHWAY DIVISION

SCALE
PLAN 1 IN. = 50 FT.
PROFILE HORIZ. 1 IN. = 50 FT.
" VERT. 1 IN. = 10 FT.
CROSS SECTION 1 IN. = 5 FT.



CONVENTIONAL SIGNS

- COUNTY LINE
- TOWN LINE
- FENCE LINE
- STONE WALL
- UNFENCED PROPERTY
- GUARD RAIL
- TRAVELED WAY
- RAILROAD
- RETAINING WALL
- CENTER LINE
- SURVEY LINE
- CULVERT
- DROP INLET
- DAPPLE POLE
- POWER POLE
- TELEPHONE POLE
- TREES
- HEDGE

GROUND ELEVATION DATUM LEGS LINE
GRADE ELEVATION DATUM LEGS LINE

- CURVE DATA
- DEFLECTION ANGLE Δ
 - DEGREE OF CURVE D.
 - RADIUS OF CURVE R.
 - TANGENT DISTANCE T.
 - LENGTH OF CURVE L.
 - EXTERNAL DISTANCE E.
 - POINT OF INTERSECTION P.I.
 - POINT OF CURVE P.C.
 - POINT OF TANGENT P.T.

APPROVED
CHIEF ENGINEER
SUBMITTED BY ORDER OF THE STATE HIGHWAY BOARD
COMMISSIONER OF HIGHWAYS

RECOMMENDED
DISTRICT ENGINEER
BUREAU OF PUBLIC ROADS
RECOMMENDED FOR APPROVAL
CHIEF ENGINEER
APPROVED
DIRECTOR - BUREAU OF PUBLIC ROADS

SERIES F No. 70B FILED
SHEET 1 OF 16

DIST # 9 PLANS 5

GUARD RAIL REQUIRED
 ON LEFT
 Sta 0+12 to Sta 0+12 Length 24ft
 Sta 1+12 to Sta 1+12 Length 24ft
 ON RIGHT
 Sta 0+12 to Sta 1+12 Length 128ft
 Sta 1+12 to Sta 1+12 Length 24ft
TOTAL THIS SHEET 400 FT

NEW CULVERTS REQUIRED
 Sta 0+00 16" Cast Iron Pipe Length 30ft
 Sta 1+00 16" Cast Iron Pipe Length 30ft
 1-2x5 Concrete 20cu yd
 1-2x5 Concrete 20cu yd

STONE BASE REQUIRED
 Sta 0+00 to Sta 3+50 Length 350ft
TOTAL 350 FT

DRY MASONRY WALL REQUIRED
 Sta 0+00 to Sta 1+00 Length 100ft

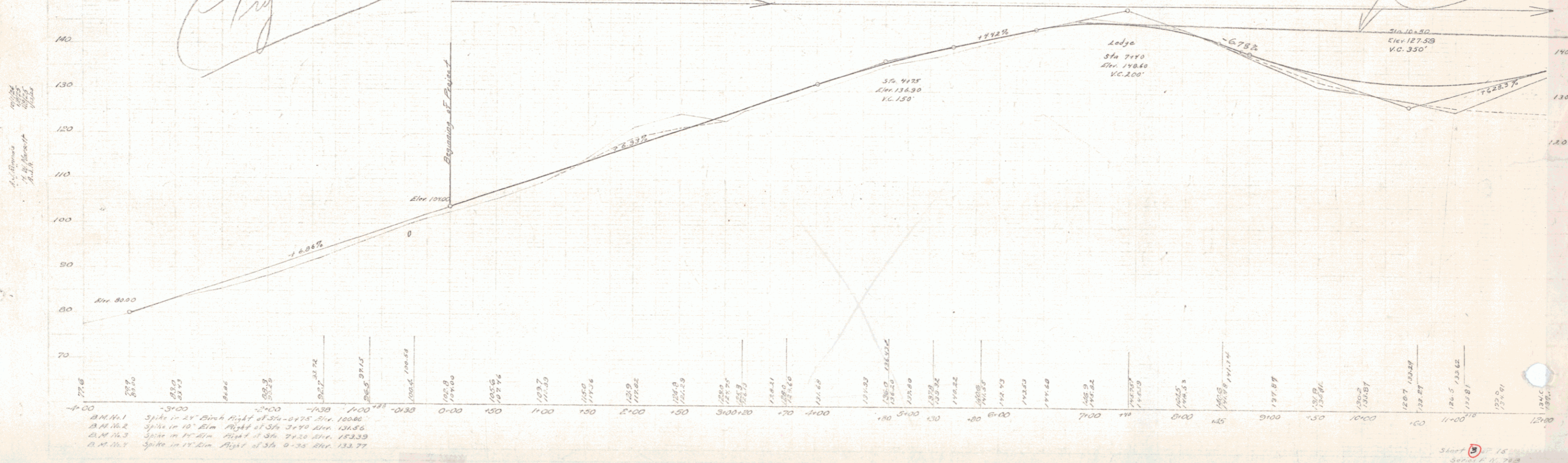
Curve #5
 Δ: 114.45
 D: 114.45
 T: 98.2
 L: 193.8
 A: 51
 R: 935

Try
 Tangent From
 Here to
 foot of Hill
 Heavy Side Cut & Easement

Try not over 3 or 4°

POOR ORIGINAL COPY

Proposed
 Grade Line



Station	Elevation
0+00	77.6
0+10	78.7
0+20	81.0
0+30	83.0
0+40	85.5
0+50	88.6
0+60	92.2
0+70	96.5
0+80	101.5
0+90	107.2
1+00	113.6
1+10	120.7
1+20	128.5
1+30	137.0
1+40	146.2
1+50	156.1
1+60	166.7
1+70	178.0
1+80	190.0
1+90	202.7
2+00	217.0
2+10	232.0
2+20	247.7
2+30	264.2
2+40	281.5
2+50	299.6
2+60	318.5
2+70	338.2
2+80	358.7
2+90	380.0
3+00	402.0
3+10	424.7
3+20	448.0
3+30	472.0
3+40	496.7
3+50	522.0
3+60	548.0
3+70	574.7
3+80	602.0
3+90	630.0
4+00	658.7
4+10	688.0
4+20	718.0
4+30	748.7
4+40	780.0
4+50	812.0
4+60	845.0
4+70	879.0
4+80	914.0
4+90	950.0
5+00	987.0
5+10	1025.0
5+20	1064.0
5+30	1104.0
5+40	1145.0
5+50	1187.0
5+60	1230.0
5+70	1274.0
5+80	1319.0
5+90	1365.0
6+00	1412.0
6+10	1456.0
6+20	1501.0
6+30	1547.0
6+40	1594.0
6+50	1642.0
6+60	1691.0
6+70	1741.0
6+80	1792.0
6+90	1844.0
7+00	1897.0
7+10	1951.0
7+20	2006.0
7+30	2062.0
7+40	2119.0
7+50	2177.0
7+60	2236.0
7+70	2296.0
7+80	2357.0
7+90	2419.0
8+00	2482.0
8+10	2546.0
8+20	2611.0
8+30	2677.0
8+40	2744.0
8+50	2812.0
8+60	2881.0
8+70	2951.0
8+80	3022.0
8+90	3094.0
9+00	3167.0
9+10	3241.0
9+20	3316.0
9+30	3392.0
9+40	3469.0
9+50	3547.0
9+60	3626.0
9+70	3706.0
9+80	3787.0
9+90	3869.0
10+00	3952.0
10+10	4036.0
10+20	4121.0
10+30	4207.0
10+40	4294.0
10+50	4382.0
10+60	4471.0
10+70	4561.0
10+80	4652.0
10+90	4744.0
11+00	4837.0
11+10	4931.0
11+20	5026.0
11+30	5122.0
11+40	5219.0
11+50	5317.0
11+60	5416.0
11+70	5516.0
11+80	5617.0
11+90	5719.0
12+00	5822.0

GUARD RAIL REQUIRED

ON LEFT		Length	Notes
Sta 17+00 to Sta 18+12	24'	24'	
Sta 23+24 to Sta 23+48	24'	24'	
Sta 27+26 to Sta 27+50	24'	24'	
ON RIGHT		Length	Notes
Sta 16+00 to Sta 17+60	160'	160'	
Sta 17+00 to Sta 18+12	24'	24'	
Sta 23+24 to Sta 23+48	24'	24'	
Sta 27+26 to Sta 27+50	24'	24'	
TOTAL THIS SHEET 600 FT			

N-EW CULVERTS REQUIRED

Sta 18+00	16" Corr. Iron Pipe	Length 32 FT	2.0 cu yd
	1-2x8 Concrete		
Sta 23+36	16" Corr. Iron Pipe	Length 34 FT	2.0 cu yd
	1-2x8 Concrete		
Sta 27+38	16" Corr. Iron Pipe	Length 32 FT	2.0 cu yd
	1-2x8 Concrete		

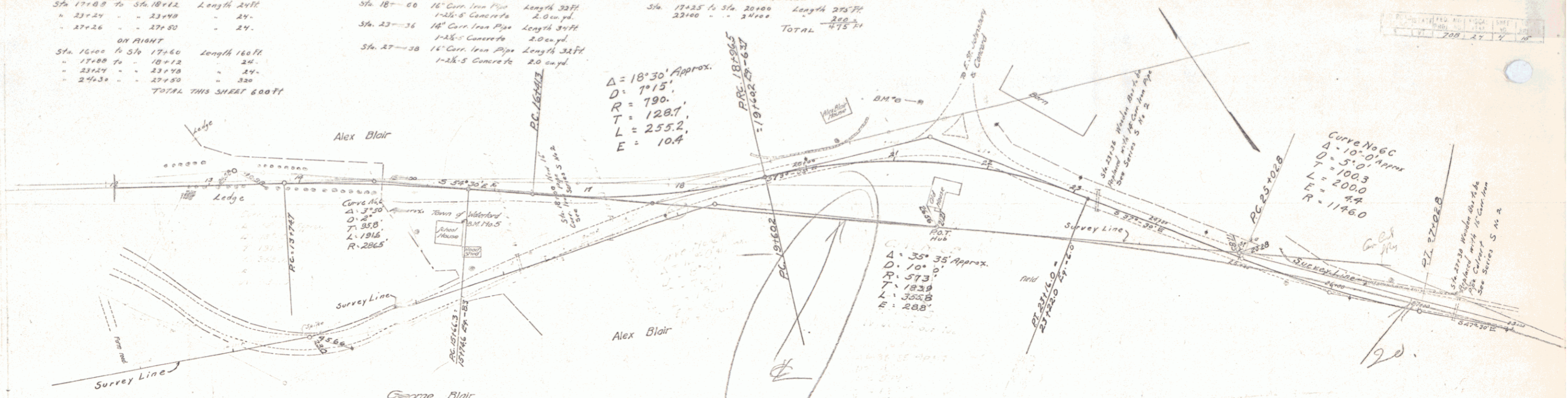
STONE BASE REQUIRED

Sta 17+25 to Sta 20+00	Length 275 FT	256 cu yd
Sta 23+00 to Sta 24+00	Length 100 FT	95 cu yd
TOTAL		351 cu yd

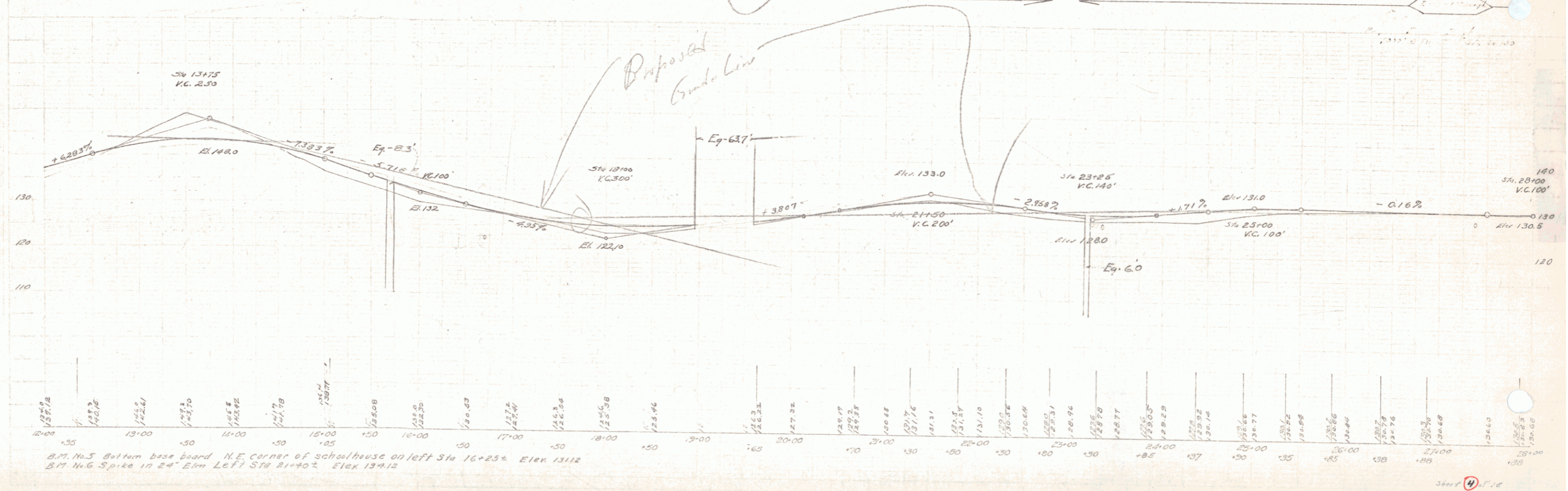
$\Delta = 18^{\circ}30'$ Approx.
 $D = 7^{\circ}15'$
 $R = 790'$
 $T = 128.7'$
 $L = 255.2'$
 $E = 10.4'$

$\Delta = 35^{\circ}35'$ Approx.
 $D = 10^{\circ}00'$
 $R = 573'$
 $T = 183.9'$
 $L = 355.8'$
 $E = 28.8'$

Curve No 6C
 $\Delta = 10^{\circ}00'$ Approx.
 $D = 5^{\circ}00'$
 $R = 100.3'$
 $L = 200.3'$
 $E = 4.4'$
 $R = 1146.0'$



POOR ORIGINAL COPY



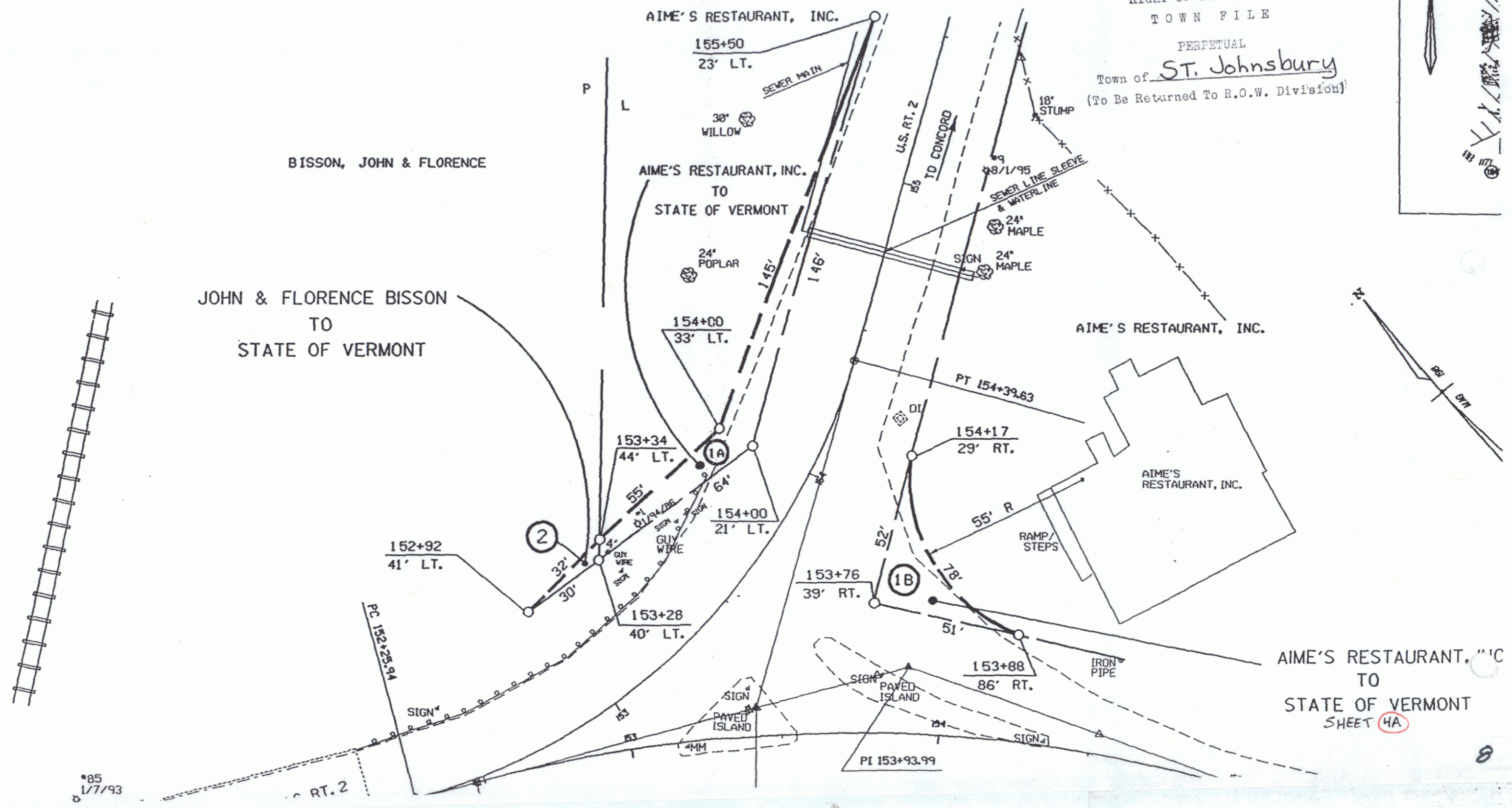
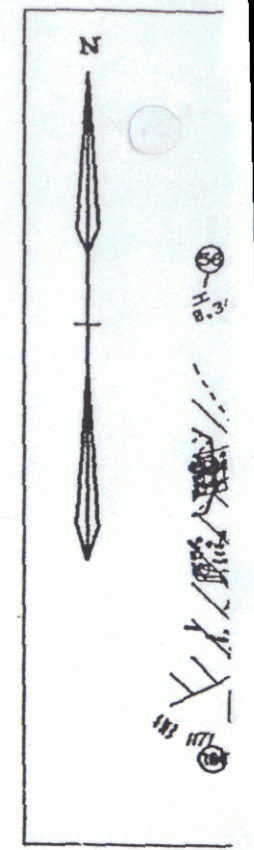
B.M. No. 5 Bottom base board N.E. corner of schoolhouse on left Sta 16+25 El. 131.2
 B.M. No. 6 Spike in 2" Elm left Sta 21+90 El. 134.12

N.	DESCRIPTION	NO.	STATION	ENDING STATION	TAKING	REM.	RIGHTS	FEES TAKEN	DATE	TOWN OR CITY RECORDED	BK.	PG.	REMARKS
1A	AIME'S RESTAURANT, INC.	1	153+28 LT. 154+76 LT.	155+50 LT. 155+09 LT.	0.04A±		EXCEPT & RESERVE	MOE		ST. JOHNSBURY			1545 S.F. ± SEWER LINE
		1	153+76 RT.	154+17 RT.	0.01A±								650 S.F. ±
2	BISSON, JOHN & FLORENCE	1	152+92 LT.	153+34 LT.	0.01A±			MOE		ST. JOHNSBURY			84 S.F. ±

Rte 18
St. Johnsbury

U.S. Route #2
Vt. Route #18
RIGHT-OF-WAY DIVISION
TOWN FILE

PERPETUAL
Town of St. Johnsbury
(To Be Returned To R.O.W. Division)



*85
1/7/93

AIME'S RESTAURANT, INC.
TO
STATE OF VERMONT
SHEET 4A

