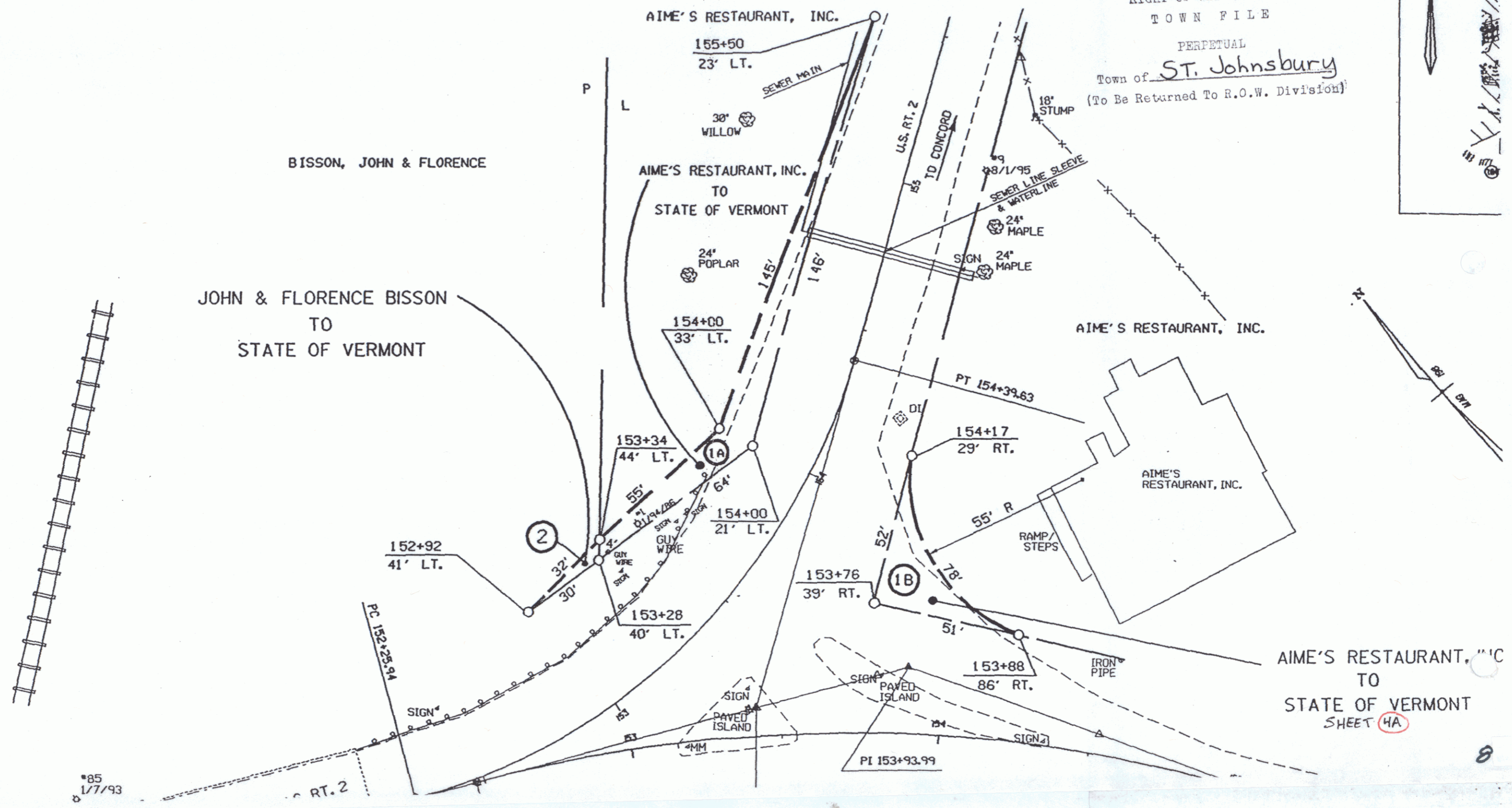
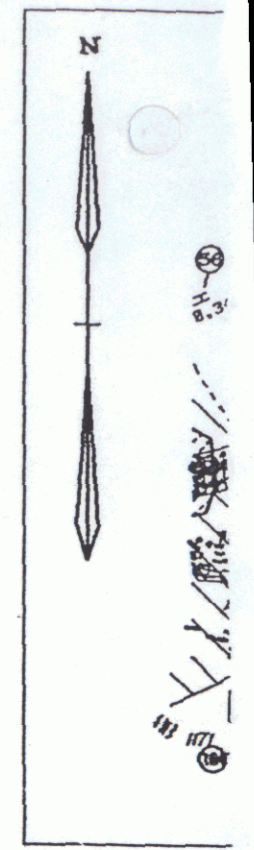


N.	NO.	STATION	ENDING STATION	TAKING	REM.	RIGHTS	FILE TAKEN	DATE	TOWN OR CITY RECORDED	BK.	PG.	REMARKS
1A	1	153+28 LT. 154+76 LT.	155+50 LT. 155+09 LT.	0.04A±		EXCEPT & RESERVE	MOE		ST. JOHNSBURY			1545 S.F. ± SEWER LINE
	1	153+76 RT.	154+17 RT.	0.01A±								650 S.F. ±
2	1	152+92 LT.	153+34 LT.	0.01A±			MOE		ST. JOHNSBURY			84 S.F. ±

Rte 18  
St. Johnsbury

U.S. Route #2  
Vt. Route #18  
RIGHT-OF-WAY DIVISION  
TOWN FILE

PERPETUAL  
Town of St. Johnsbury  
(To Be Returned To R.O.W. Division)



\*85  
1/7/93

AIME'S RESTAURANT, INC.  
TO  
STATE OF VERMONT  
SHEET 4A