

**GUARD RAIL REQUIRED**

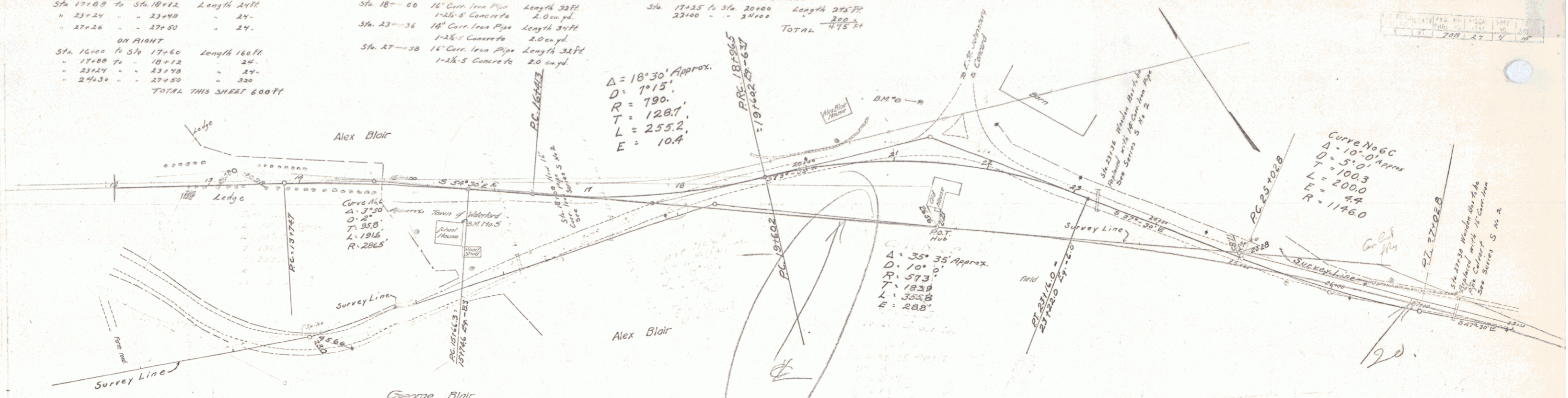
ON LEFT		Length	Notes
Sta 17+00 to Sta 18+12	24'	24'	
Sta 23+24 to Sta 23+48	24'	24'	
Sta 27+26 to Sta 27+50	24'	24'	
ON RIGHT		Length	Notes
Sta 16+00 to Sta 17+60	160'	160'	
Sta 17+00 to Sta 18+12	24'	24'	
Sta 23+24 to Sta 23+48	24'	24'	
Sta 27+26 to Sta 27+50	24'	24'	
<b>TOTAL THIS SHEET 600 FT</b>			

**N-EW CULVERTS REQUIRED**

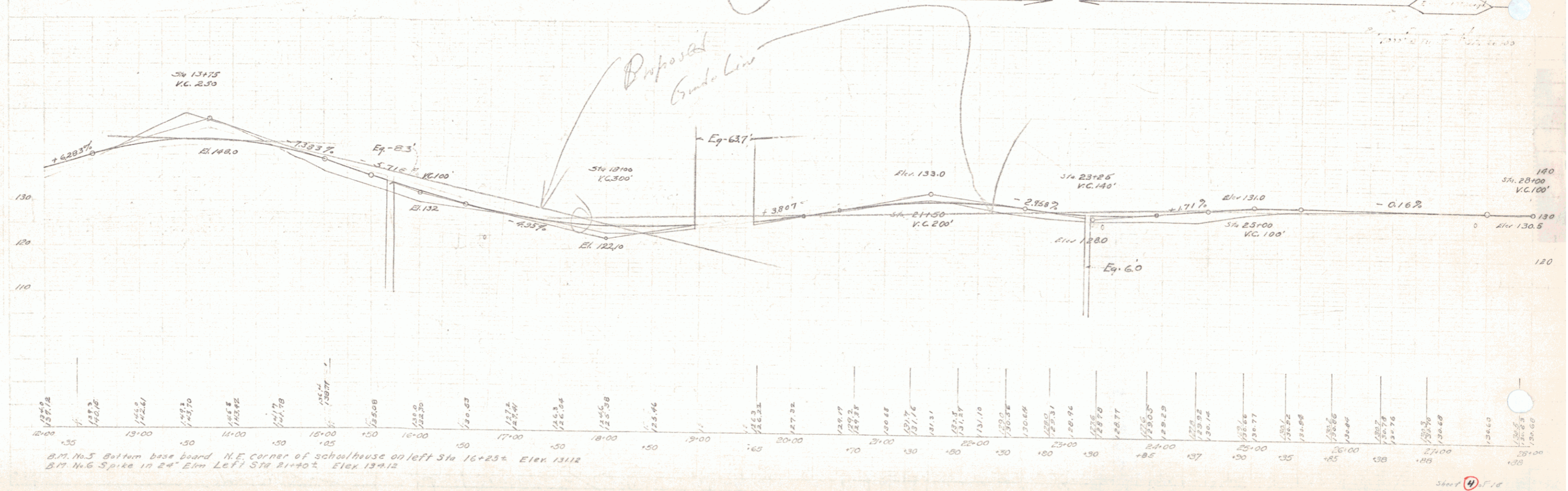
Sta 18+00	16" Corr. Iron Pipe	Length 32 FT	2.0 cu yd
	1-2x8 Concrete		
Sta 23+36	16" Corr. Iron Pipe	Length 34 FT	2.0 cu yd
	1-2x8 Concrete		
Sta 27+38	16" Corr. Iron Pipe	Length 32 FT	2.0 cu yd
	1-2x8 Concrete		

**STONE BASE REQUIRED**

Sta 17+25 to Sta 20+00	Length 275 FT	256
Sta 23+00 to Sta 24+00	Length 100 FT	75
<b>TOTAL 331</b>		



**POOR ORIGINAL COPY**



B.M. No. 5 Bottom base board N.E. corner of schoolhouse on left Sta 16+25 El. 131.2  
 B.M. No. 6 Spike in 2" Elm left Sta 21+50 El. 134.12