

INDEX OF SHEETS

SHEET NO. 1	TITLE PAGE
2	TYPICAL CROSS-SECTION OF IMPROVEMENT (2 1/2" Crushed Stone Mixed In-Place Surface)
2A	TYPICAL CROSS-SECTION OF IMPROVEMENT (Course Item 2' with Curback Asphalt Item 3)
3-5	PLAN AND PROFILE
6	STANDARD STRUCTURE SHEET S-28 CRESOTED TIMBER CURB, ITEM 98 WITH ITEM 90
7	" " " S-30 CABLE GUARD RAIL
8	" " " S-30A STANDARD UNDERDRAIN
9	" " " S-40 BARRICADES, SIGNS & LIGHTS
10	" " " S-41 ROUNDING OF SLOPES
11-17	CROSS SECTIONS

STANDARD STRUCTURE SHEETS APPROVED  
By The Chief Engineer  
STANDARD STRUCTURE SHEET S-28 Approved 4-26-41  
S-30A " 4-19-41  
S-40 " 9-5-40

STATE OF VERMONT  
STATE HIGHWAY DEPARTMENT

PLAN AND PROFILE OF PROPOSED  
STATE HIGHWAY  
FEDERAL AID PROJECT

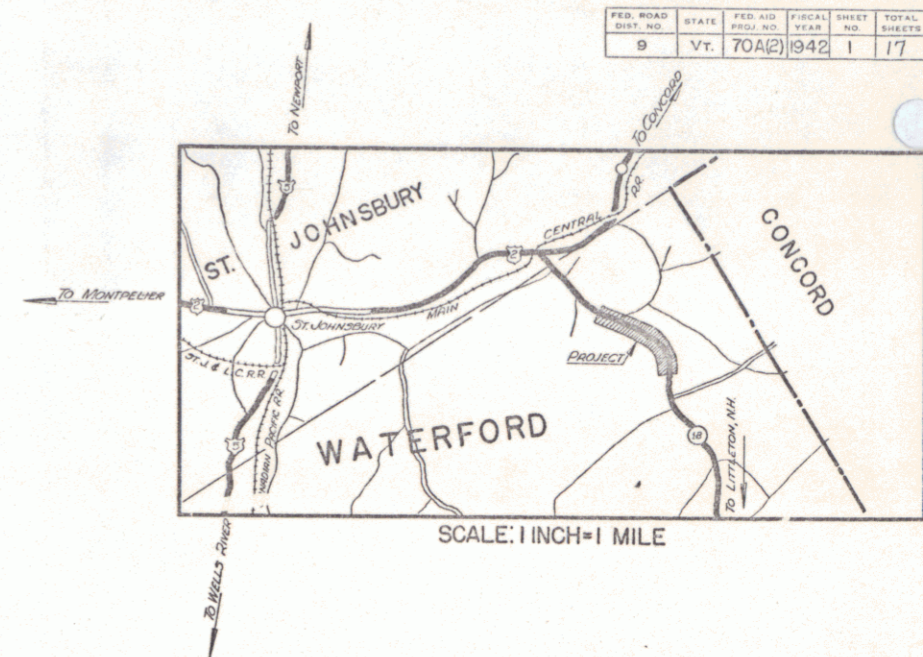
TOWN OF WATERFORD

VERMONT ROUTE 18

ST. JOHNSBURY, VT.-LITTETON, N. H. ROAD

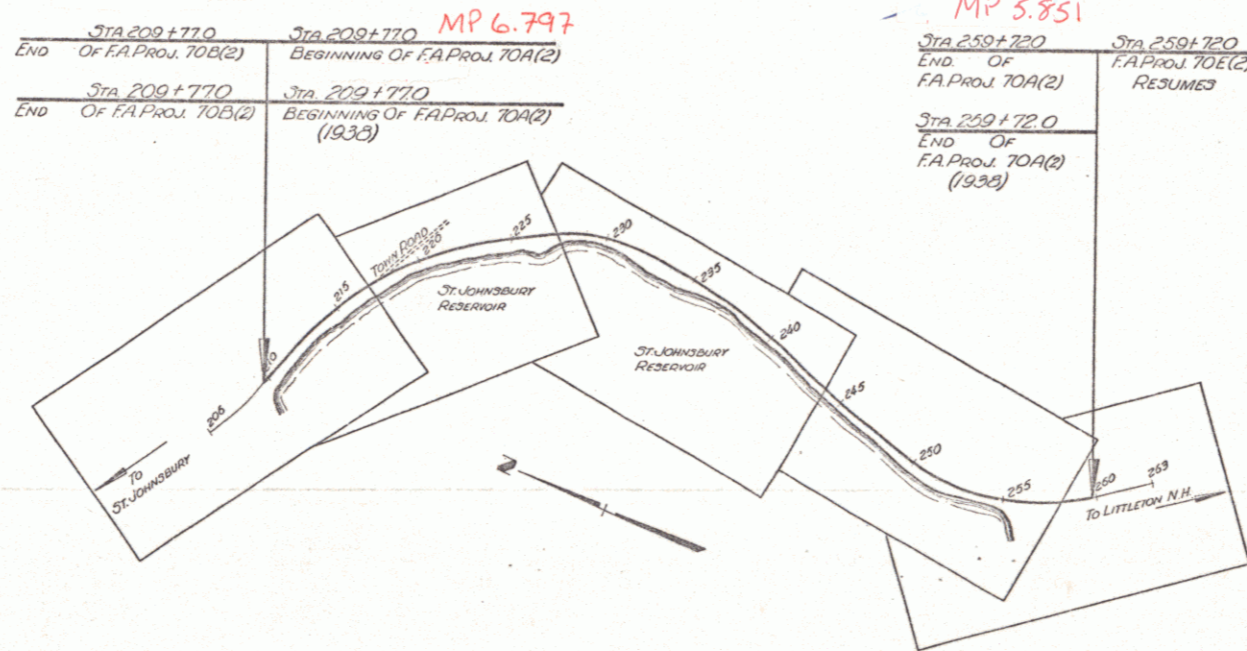
BEGINNING AT A POINT 0.830 MILES SOUTHEASTERLY OF THE ST. JOHNSBURY-WATERFORD TOWN LINE AND EXTENDING SOUTHEASTLY 0.946 MILES

LENGTH OF PROJECT 4997.2 FEET = 0.946 MILES



FED. ROAD DIST. NO.	STATE	PROJ. NO.	FISCAL YEAR	SHEET NO.	TOTAL SHEETS
9	Vt.	70A(2)	1942	1	17

[To Be Returned To R.O.W. Division]  
Town of Waterford  
PERMIT  
TOWN FILE  
RIGHT-OF-WAY DIVISION



RECORD PLANS  
By  
A.C. Birnie 5/21/42

APPROVED: July 2, 1941  
H. Waugh  
COMMISSIONER OF HIGHWAYS  
SUBMITTED BY ORDER OF THE STATE HIGHWAY BOARD

CUT SLOPES	
COUNTY LINE	
TOWN LINE	
FENCE LINE	
STONE WALL	
UNFENCED PROPERTY	
GUARD RAIL	
TRAVELED WAY	
RAILROAD	
RETAINING WALL	
CENTER LINE	
SURVEY LINE	
CULVERT	
DROP INLET	
TROLLEY POLE	
POWER POLE	
TELEPHONE POLE	
TREES	
HEDGE	

CURVE DATA

DEFLECTION ANGLE	Δ
DEGREE OF CURVE	D
RADIUS OF CURVE	R
TANGENT DISTANCE	T
LENGTH OF CURVE	L
EXTERNAL DISTANCE	E
POINT OF INTERSECTION	P. I.
POINT OF CURVE	P. C.
POINT OF TANGENT	P. T.
POINT ON TANGENT	P. O. T.

SCALES

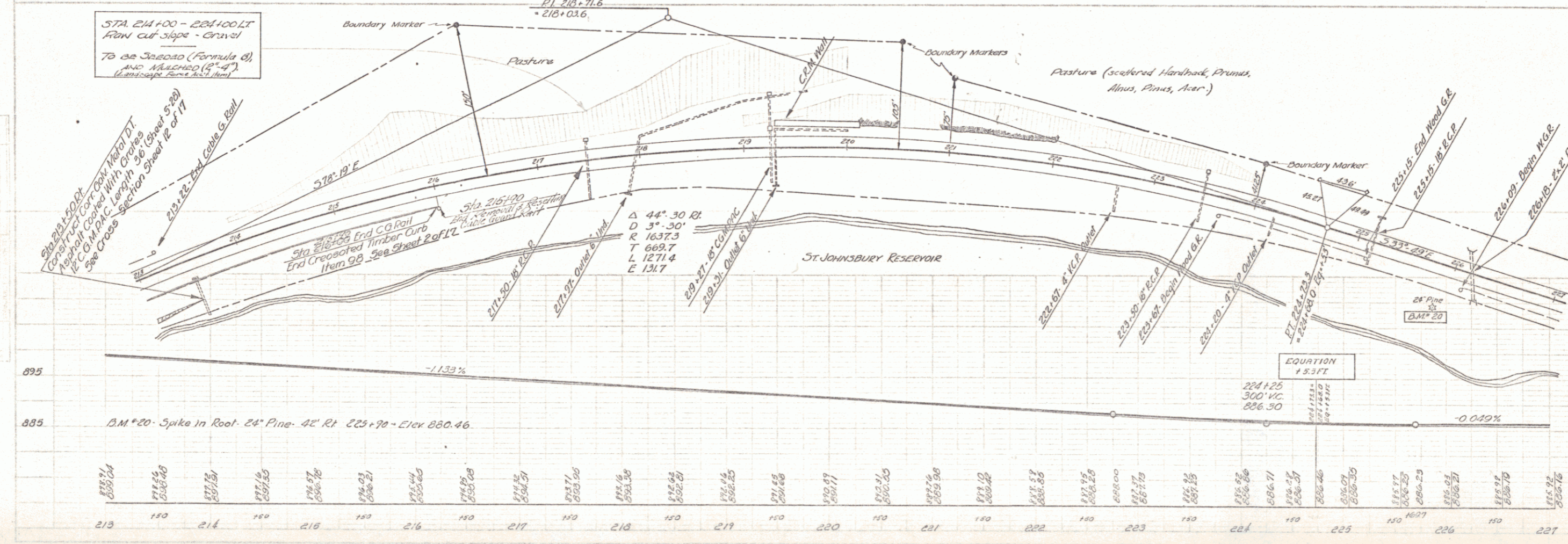
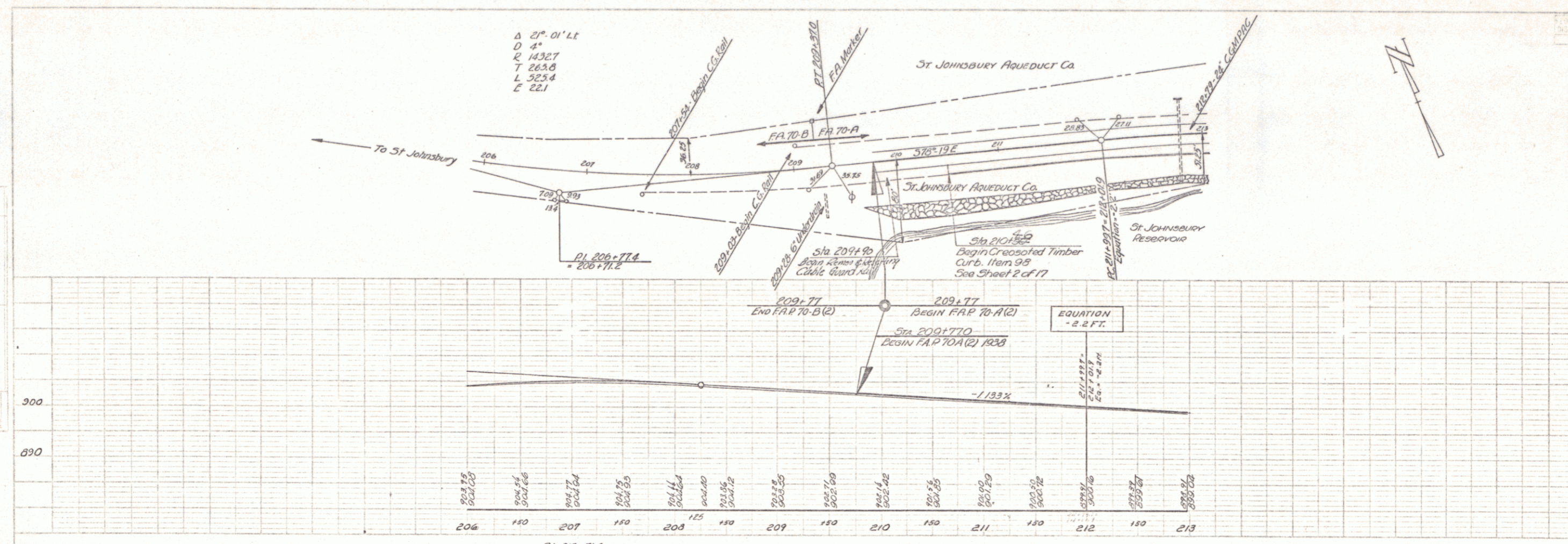
TITLE	1" = 500'
TYPICAL	1" = 2'
PLAN	1" = 50'
PROFILE HORIZONTAL	1" = 50'
PROFILE VERTICAL	1" = 10'
CROSS SECTIONS	1" = 5'

RECORD PLANS  
Waterford FAP 70A(2)  
Contractor - Keller Corp. 1942

APPROVED: June 28, 1941  
ROAD ENGINEER  
DISTRICT HIGHWAY COMMISSIONER  
SERIES FAP NO. 70A(2) FILED  
SHEET 1 OF 17

DIST. # 7 P2





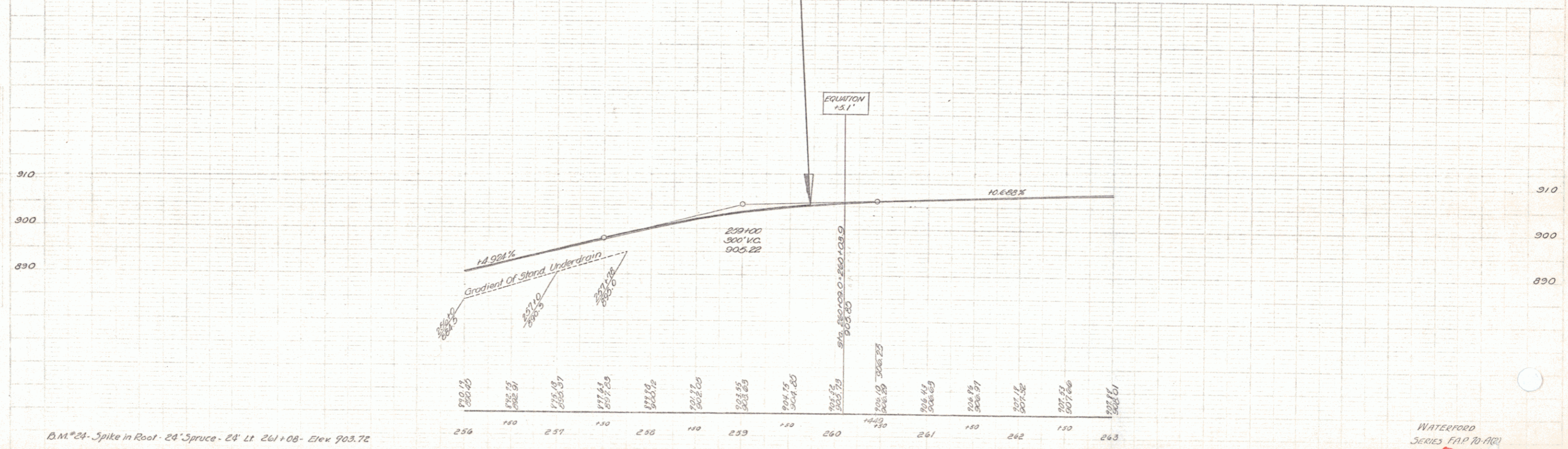
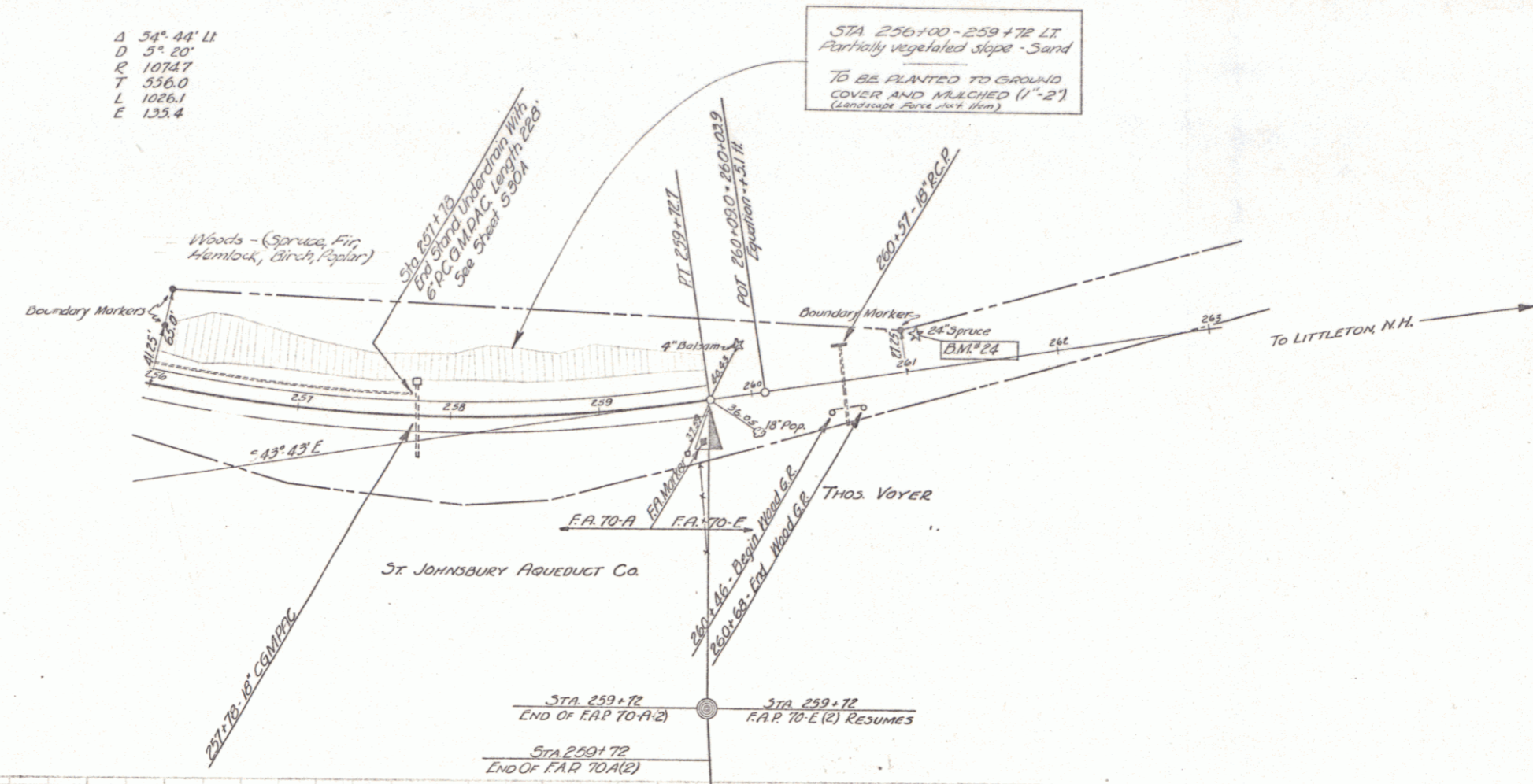
2







Δ 54° 44' Lt  
 D 5" 20"  
 R 1074.7  
 T 336.0  
 L 1026.1  
 E 133.4



B.M. #24 - Spike in Root - 24' Spruce - 24' Lt 261+08 - Elev 903.72

4