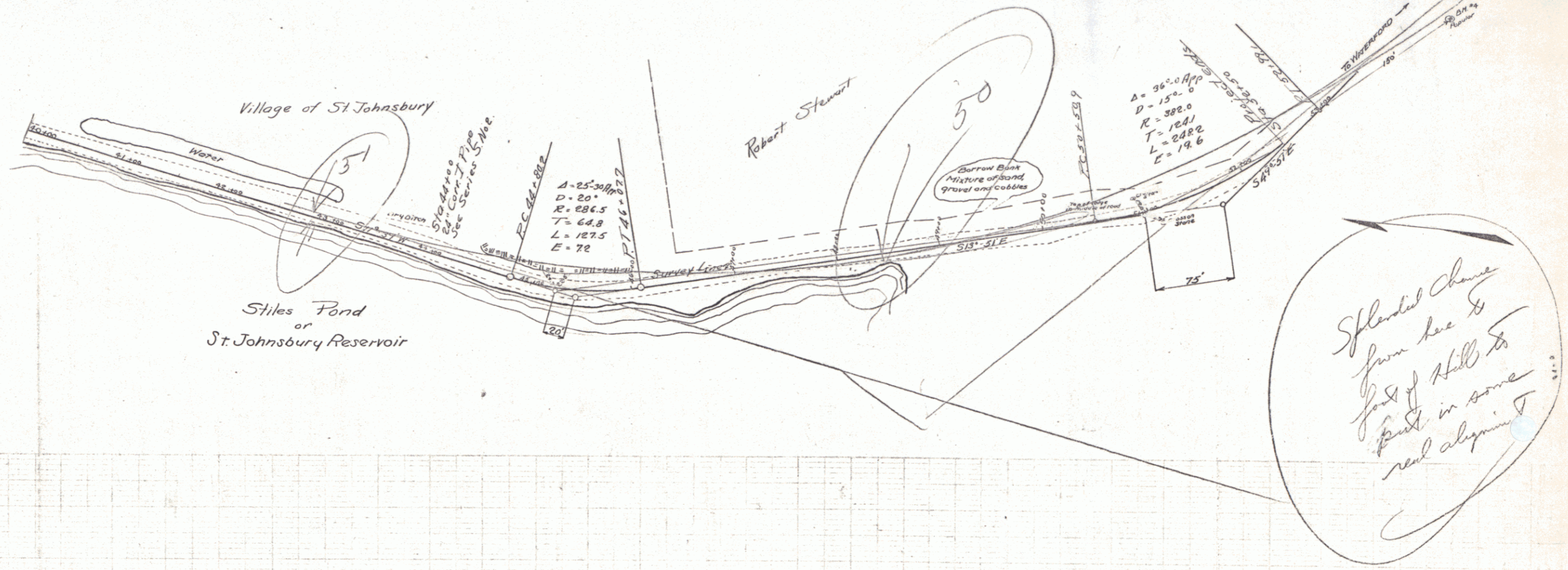


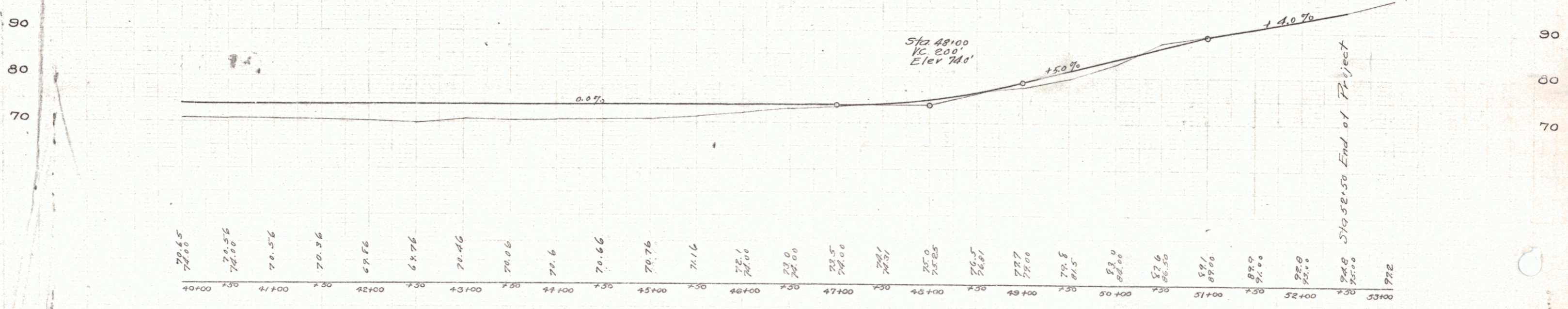
GUARD RAIL REQUIRED  
 Sta 40+35 to Sta 43+15 Length 280 ft  
 Sta 43+38 to Sta 44+12 Length 74 ft  
 " 44+34 " " 44+66 " 32 "  
 ON RIGHT  
 Sta 40+00 to Sta 46+22 Length 622 ft  
 " 46+86 " " 48+70 " 184 "  
 Total this sheet 1102 ft

NEW CULVERTS REQUIRED  
 Sta. 44+00 24" Cor. I Pipe Length 36 ft  
 " 2 1/2" - 5" Concrete 32 Cu yds.

ALL ROAD STATED AND PLOTTED  
 DIST. NO. 1001 YEAR 1923



M.C. Bradley 1914



B.M. A Spike in Paper 150' East of Sta. 53+00 Elev. 98.15

Series F No. 70A Filled Sheet 6 of 21