

INDEX OF SHEETS

SHEET NO. 1	TITLE PAGE
" 2	TYPICAL CROSS-SECTION OF IMPROVEMENT— GOODS, DRAINAGE, BASE, & GUARD RAIL, WITH DOUBLE TRACK CURT OF REFINED TYP. (ITEM-28)
" 3	BANKING AND WIDENING TABLES
" 4-8	PLAN AND PROFILE SHEETS
" 9	STANDARD STRUCTURE SHEET 3-28 PIPE CULVERTS
" 10	" " " 3-29 BOX "
" 11	" " " 3-30 GUARD RAIL & STD. UNDERDRAIN
" 12	" " " 3-31 BOUNDARY MARKERS
" 13	" " " 3-32 CONCRETE CURBING
" 14	" " " 3-40 BARRICADES, SIGNS & LIGHTS
" 15-16	CROSS SECTION SHEETS

STANDARD STRUCTURE SHEETS APPROVED
BY THE CHIEF ENGINEER
3-28 & 3-29 JULY 14, 1933
3-30 AUG 15, 1933
3-31 JULY 25, 1934

(To Be Returned to H.O.W. Division)
Form of 4-18
PERMIT
OWN FILE
RIGHT-OF-WAY DIVISION

STATE OF VERMONT
STATE HIGHWAY DEPARTMENT

PLAN AND PROFILE OF PROPOSED
STATE HIGHWAY
FEDERAL AID PROJECT

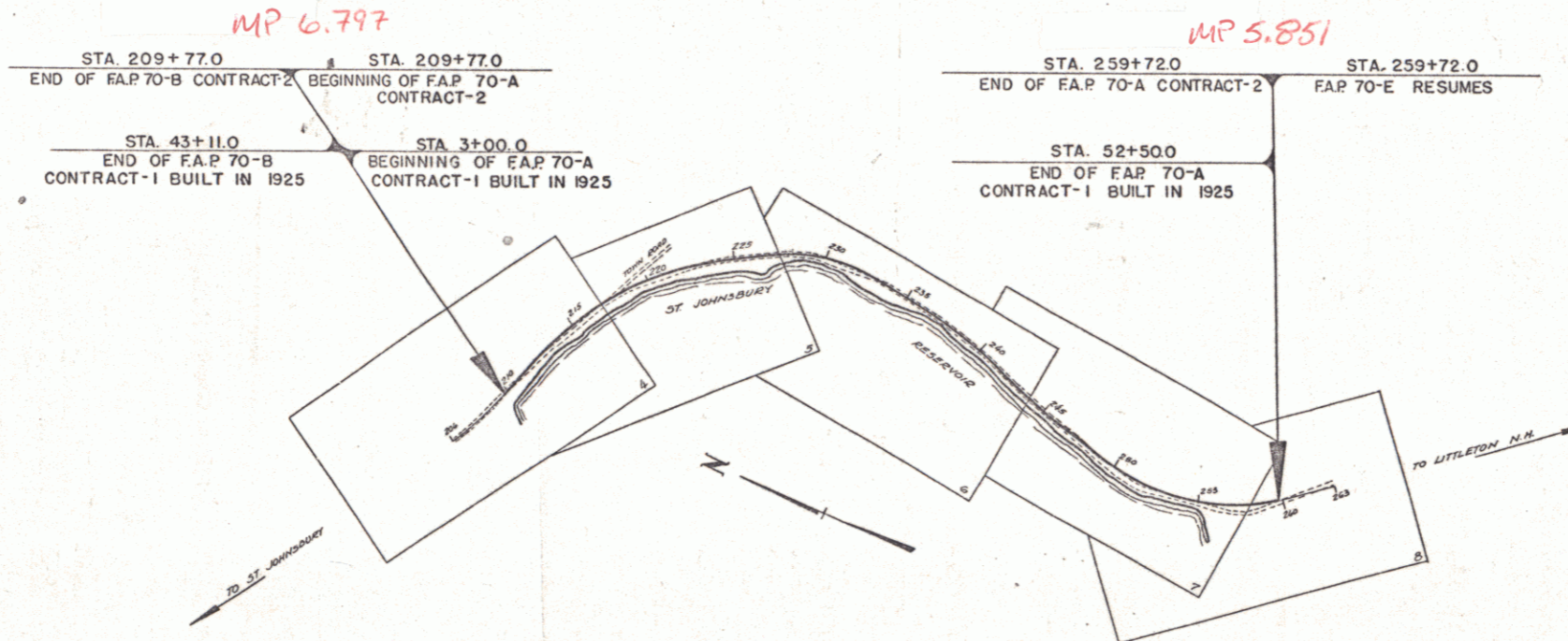
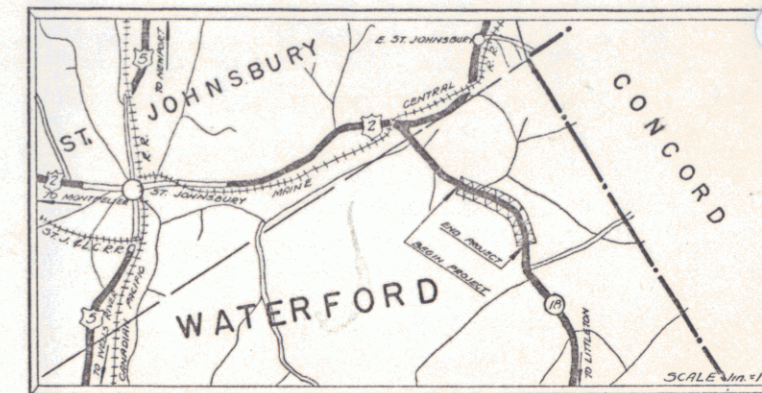
TOWN OF WATERFORD

ST. JOHNSBURY VT. - LITTLETON NH. ROAD

BEGINNING AT A POINT 0.830 MILES SOUTHEASTERLY OF THE ST. JOHNSBURY -
WATERFORD TOWN LINE AND EXTENDING SOUTHEASTERLY 0.947 MILES
LENGTH OF PROJECT 5000.3 FT. = 0.947 MILES

FED. ROAD DIST. NO.	STATE	FED. AID PROJ. NO.	FISCAL YEAR	SHEET NO.	TOTAL SHEETS
9	Vt.	70-A	1932	1	36

CONTRACT-2



Project FAP 70A

Pin # 00R555

Route VT 18

APPROVED: June 1, 1937
H. E. Sargent

COMMISSIONER OF HIGHWAYS

SUBMITTED BY ORDER OF THE STATE HIGHWAY BOARD

CONVENTIONAL SIGNS

COUNTY LINE	---
TOWN LINE	---
FENCE LINE	---
STONE WALL	---
UNFENCED PROPERTY	---
GUARD RAIL	---
TRAVELED WAY	---
RAILROAD	---
RETAINING WALL	---
CENTER LINE	---
SURVEY LINE	---
CULVERT	---
DROP INLET	---
TROLLEY POLE	---
POWER POLE	---
TELEPHONE POLE	---
TREES	---
HEDGE	---

GROUND ELEVATION	DATUM	LINE
GRADE ELEVATION	DATUM	LINE

CURVE DATA

DEFLECTION ANGLE	Δ
DEGREE OF CURVE	D
RADIUS OF CURVE	R
TANGENT DISTANCE	T
LENGTH OF CURVE	L
EXTERNAL DISTANCE	E
POINT OF INTERSECTION	P. I.
POINT OF CURVE	P. C.
POINT OF TANGENT	P. T.
POINT ON TANGENT	P. O. T.

SCALES

TITLE	1 IN. = 300 FT.
TYPICAL	1 IN. = 2 FT.
PLAN	1 IN. = 50 FT.
PROFILE	1 IN. = 30 FT.
VERT	1 IN. = 10 FT.
CROSS SECTIONS	1 IN. = 5 FT.

THESE PLANS ARE SUBJECT TO SUCH REVISIONS AS MAY BE REQUIRED BY THE BUREAU OF PUBLIC ROADS OR THE COMMISSIONER OF HIGHWAYS. CONSTRUCTION IS TO BE CARRIED ON IN ACCORDANCE WITH THE PLANS AND STANDARD ROAD AND BRIDGE SPECIFICATIONS OF 1934 AS APPROVED DEC. 29, 1936 BY THE BUREAU OF PUBLIC ROADS INCLUDING ALL SUBSEQUENT APPROVED REVISIONS AND SUCH REVISED SPECIFICATIONS AND SPECIAL PROVISIONS AS ARE SUBMITTED WITH THE PLANS.

RECOMMENDED _____
DISTRICT ENGINEER BUREAU OF PUBLIC ROADS
RECOMMENDED FOR APPROVAL _____
CHIEF ENGINEER BUREAU OF PUBLIC ROADS
APPROVED _____
DIRECTOR - BUREAU OF PUBLIC ROADS

APPROVED: May 19, 1937
W. P. ...
DISTRICT HIGHWAY COMMISSIONER

APPROVED: June 1, 1937
H. E. Sargent
ROAD ENGINEER

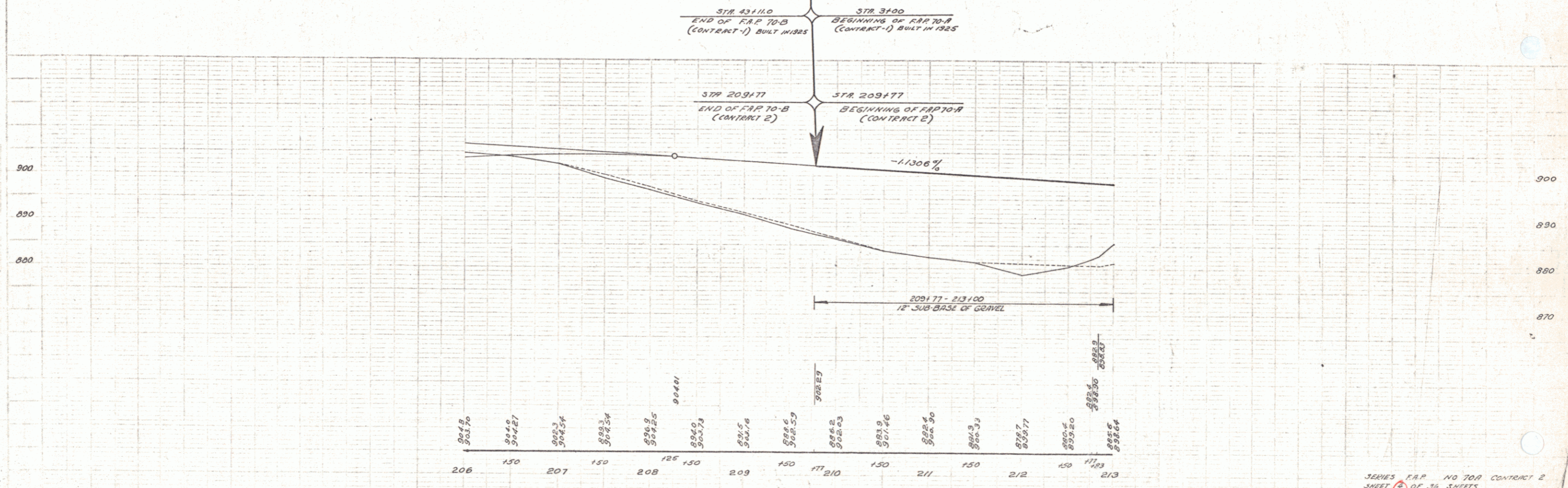
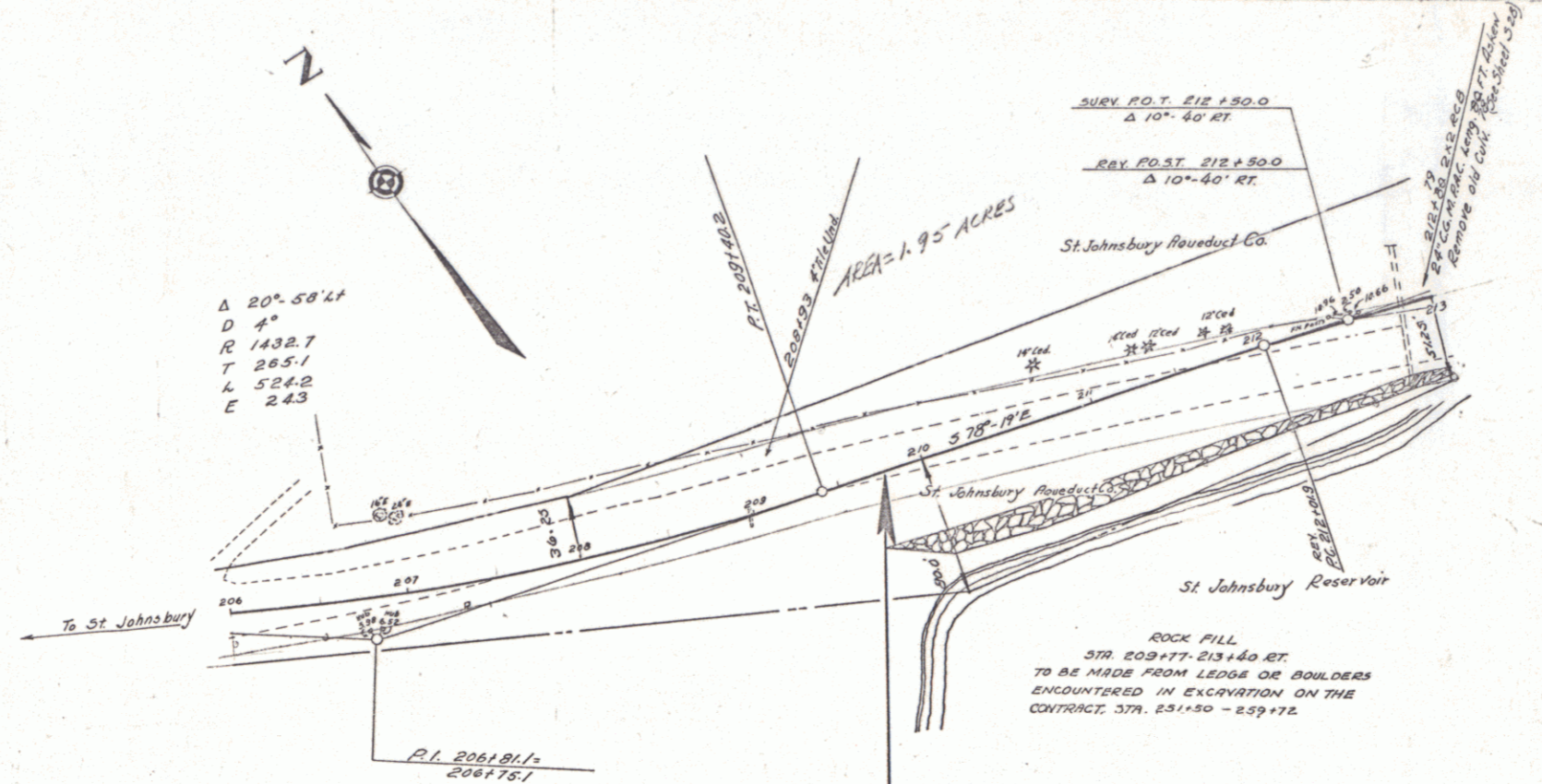
SERIES FAP NO. 70-A FILED
SHEET 1 OF 36

DIST. # 7 PLANS

BABBETT
 CIVIL ENGINEER
 1938

STATE PROJECT SHEET TOTAL
 DIST. NO. 70A 1938 4 36
 CONTRACT 2

NOTE: GUARD RAIL NOW IN PLACE ON THE PROJECT TO BECOME THE PROPERTY OF THE STATE.

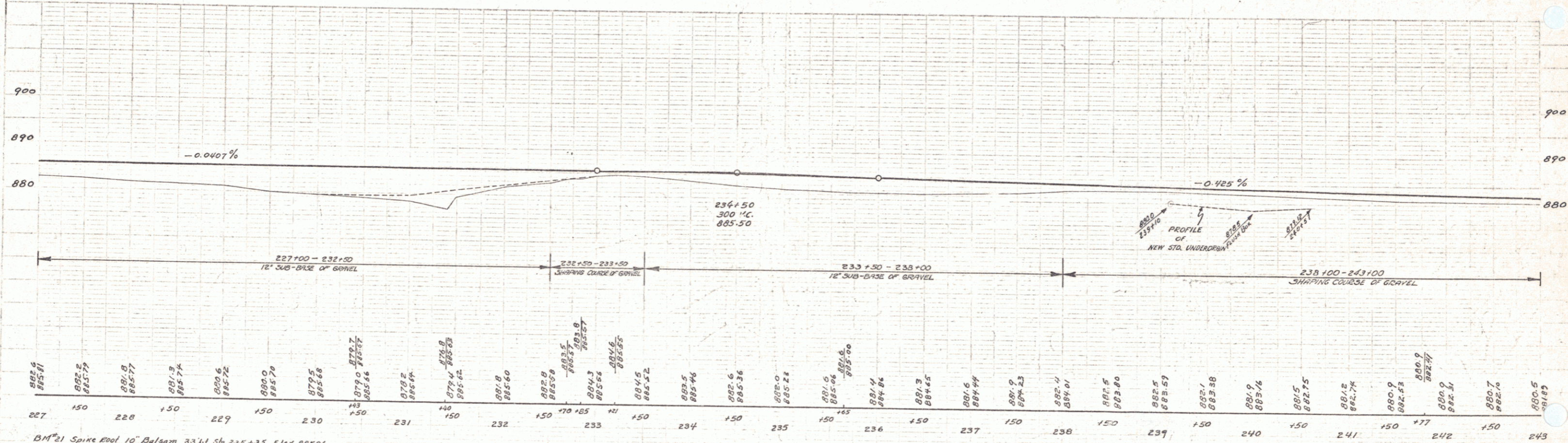
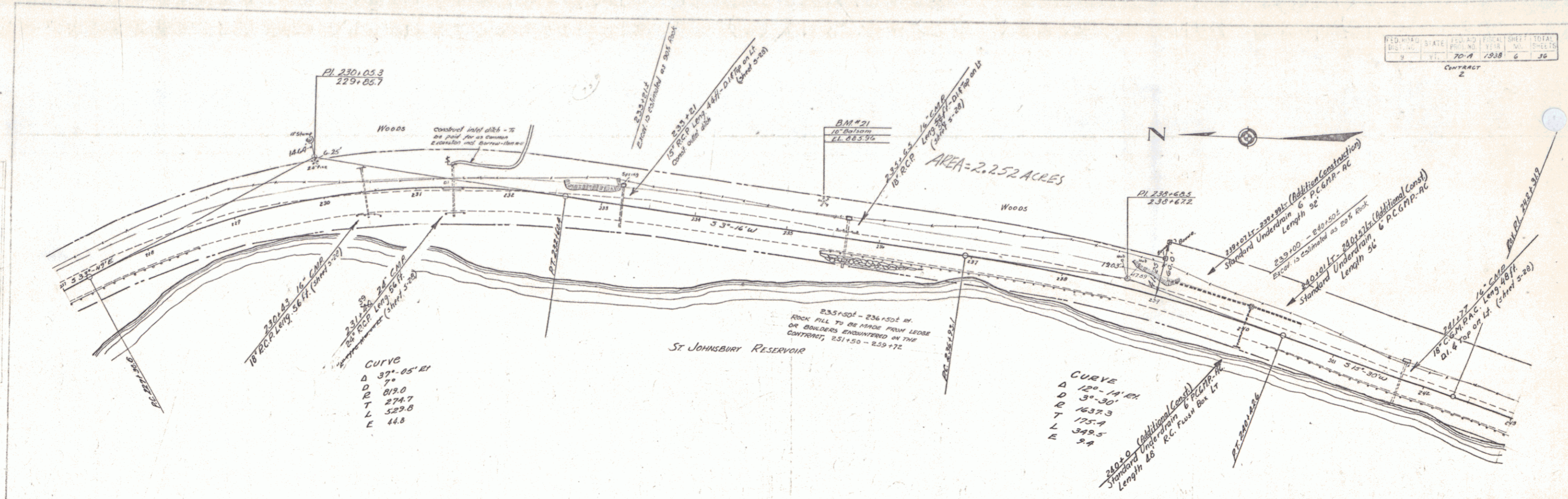


SERIES F.P. NO 70A CONTRACT 2
 SHEET 4 OF 36 SHEETS

STATE	PROJECT	DATE	SHEET NO.	TOTAL SHEETS
VT	70-A	1938	6	36

CONTRACT 2

PLAN
 SHEET NO. 6
 DATE 10/15/38
 DRAWN BY
 CHECKED BY



BM#21 Spike Pool 10' Balsam 33'61 Sta 235+33 Elev 885.96

SERIES F.A.P. NO. 70-A CONTRACT 2
 SHEET 6 OF 36 SHEETS

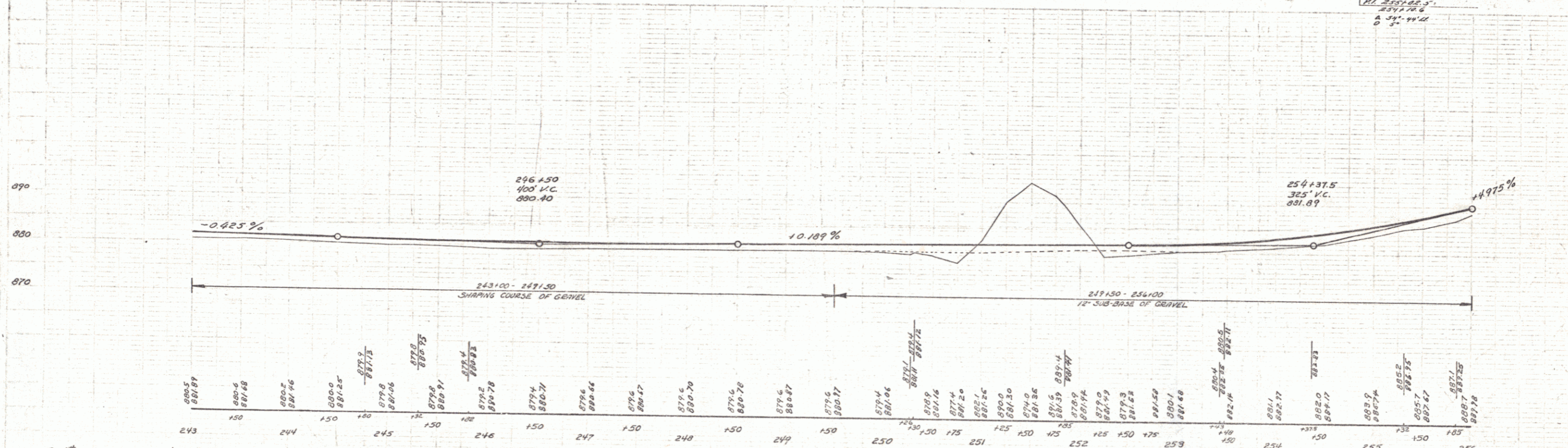
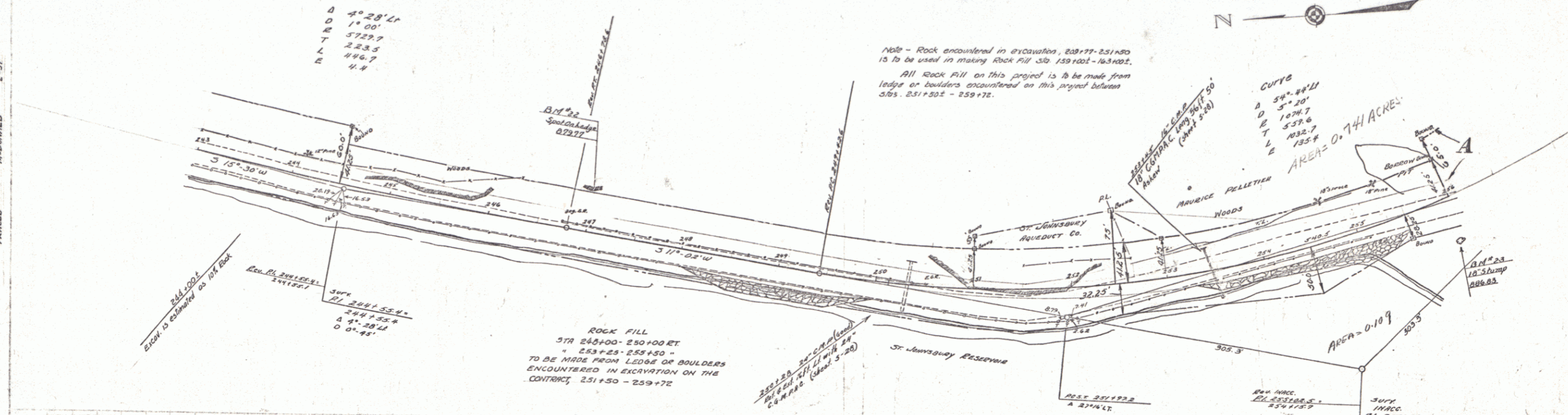
FED. ROAD DIST. NO.	STATE	FISCAL YEAR	SHEET NO.	TOTAL SHEETS
9	VT	1938	7	36

PARCEL INSTRUMENT DATE GRANTOR GRANTEE RECORDED WATERFORD
 A G.C.D. 7-14-37 MAURICE PELLETIER ST. J. 8005 114 125-37

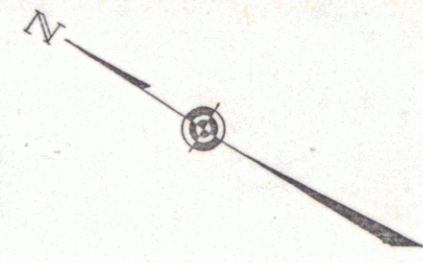
CURVE
 Δ 2° 28' 11"
 D 1° 00'
 E 5729.7
 T 223.9
 L 446.7
 R 4.4

CURVE
 Δ 34° 44' 11"
 D 5° 20'
 E 1074.7
 T 539.6
 L 1332.7
 R 193.8

BURETT AND DONALD
 12-25
 2-37
 TRACED ALDORFIELD 2-37

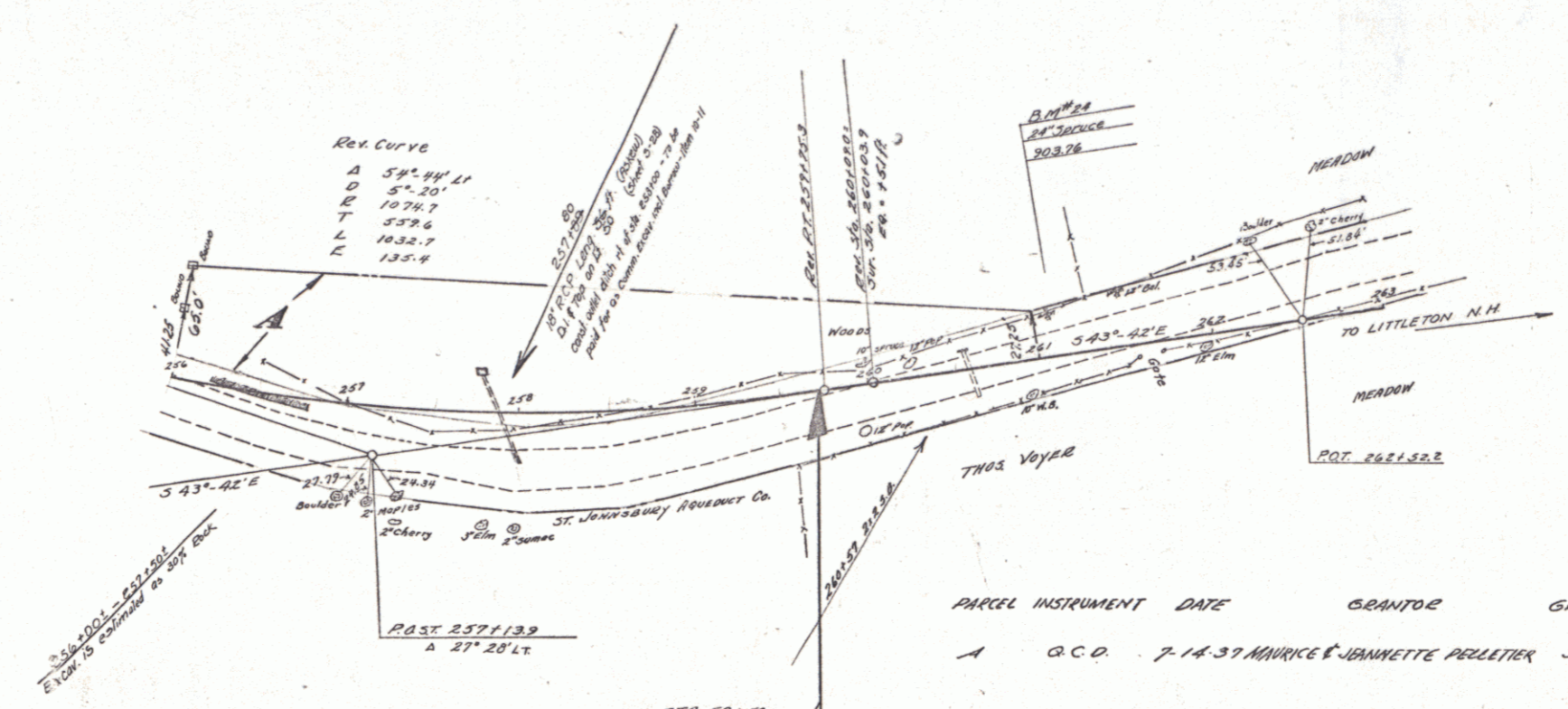


B.M. 22 Spool on Ledge to 41 Sta 246+90 Elev 879.97
 B.M. 23 Spike 10' Stamp 53 R1 - 255+87 - 886.83

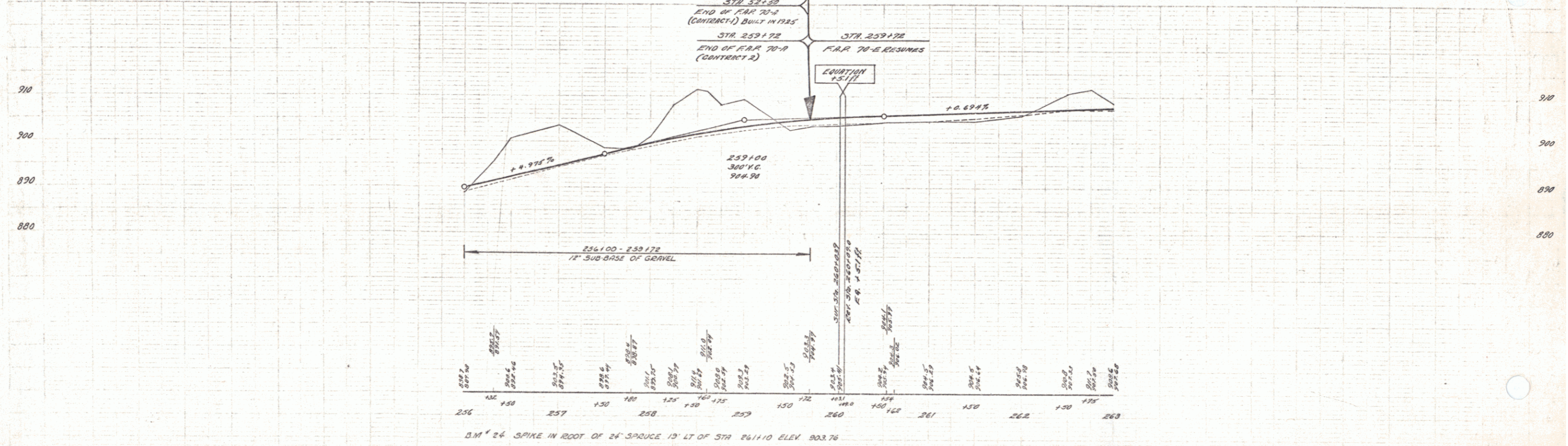


SHEET 25
 M. D. DUNN
 2-37

SHEET 25
 M. D. DUNN
 2-37



PARCEL INSTRUMENT	DATE	GRANTOR	GRANTEE	RECORDED	REMARKS
A	G.C.D.	7-14-39	MAURICE & JANNETTE PELLETIER	STOFF.	885 PAGE DATE 124 7-29-37



FED. ROAD DIST. NO.	STATE	FED. AID FUNDING YEAR	SHEET NO.	TOTAL SHEETS
5	Vt.	70A 1923	1	21

STATE OF VERMONT
STATE HIGHWAY DEPARTMENT

PLAN AND PROFILE OF PROPOSED
STATE HIGHWAY
FEDERAL AID PROJECT

TOWN OF WATERFORD

STILES POND ROAD
FROM 300' EAST OF
THE ST. JOHNSBURY VILLAGE FARM HOUSE
EASTERLY 4975'

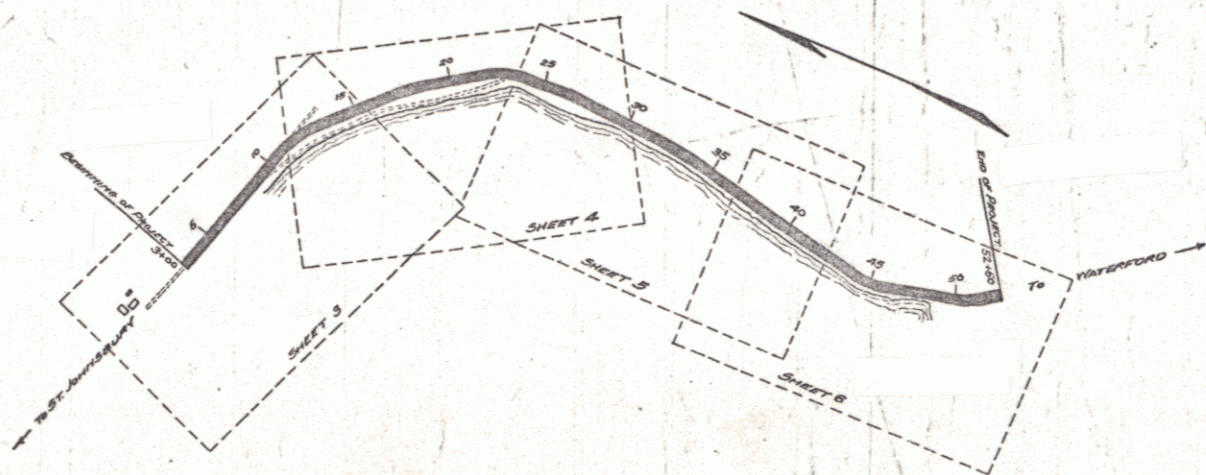


INDEX OF SHEETS

SHEET NO. 1	TITLE PAGE
2	TYPICAL CROSS-SECTION OF IMPROVEMENT S-6
3	PLAN AND PROFILE STA. 3+00 TO 14+00
4	14+00 TO 27+00
5	27+00 TO 40+00
6	40+00 TO 52+50
7-21	CROSS SECTIONS

(To Be Returned to R.O.W. Division)
 Form of V-18
 PERMIT
 TOWN FILE
 HIGHWAY DIVISION

PLAN ONE INCH EQUALS FIFTY FEET
 PROFILE HORIZONTAL 1 IN. = 30 FEET
 PROFILE VERTICAL 1 IN. = 10 FEET
 CROSS SECTIONS 1 IN. = 5 FEET



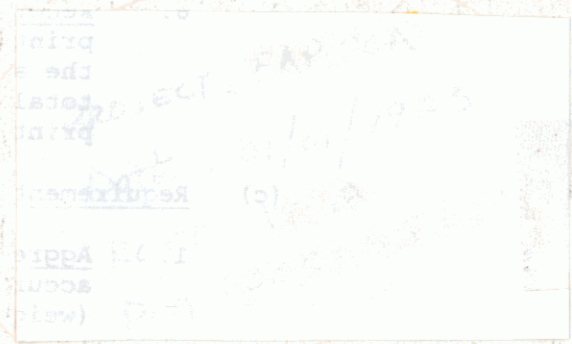
LAYOUT 1 IN. = 500 FT.

CONVENTIONAL SIGNS

COUNTY LINE	---	GROUND ELEVATION	DATA	LINE
TOWN LINE	---	GRADE ELEVATION	B. STATION	LINE
FENCE LINE	---			
STONE WALL	---			
UNFENCED PROPERTY	---			
RAILROAD	---			
RETAINING WALL	---			
CENTER LINE	---			
SURVEY LINE	---			
CULVERT	---			
DROP INLET	---			
TROLLEY POLE	---			
POWER POLE	---			
TELEPHONE POLE	---			
TREES	---			
HEDGE	---			

CURVE DATA

DEFLECTION ANGLE	Δ
DEGREE OF CURVE	D.
RADIUS OF CURVE	R.
TANGENT DISTANCE	T.
LENGTH OF CURVE	L.
EXTERNAL DISTANCE	E.
POINT OF INTERSECTION	P. I.
POINT OF CURVE	P. C.
POINT OF TANGENT	P. T.



SUBMITTED BY ORDER OF THE STATE HIGHWAY BOARD
 CHIEF ENGINEER
 DEPARTMENT OF HIGHWAYS

RECOMMENDED
 DISTRICT ENGINEER
 BUREAU OF PUBLIC ROADS
 RECOMMENDED FOR APPROVAL
 CHIEF ENGINEER
 DEPARTMENT OF HIGHWAYS
 APPROVED
 DIRECTOR - BUREAU OF PUBLIC ROADS

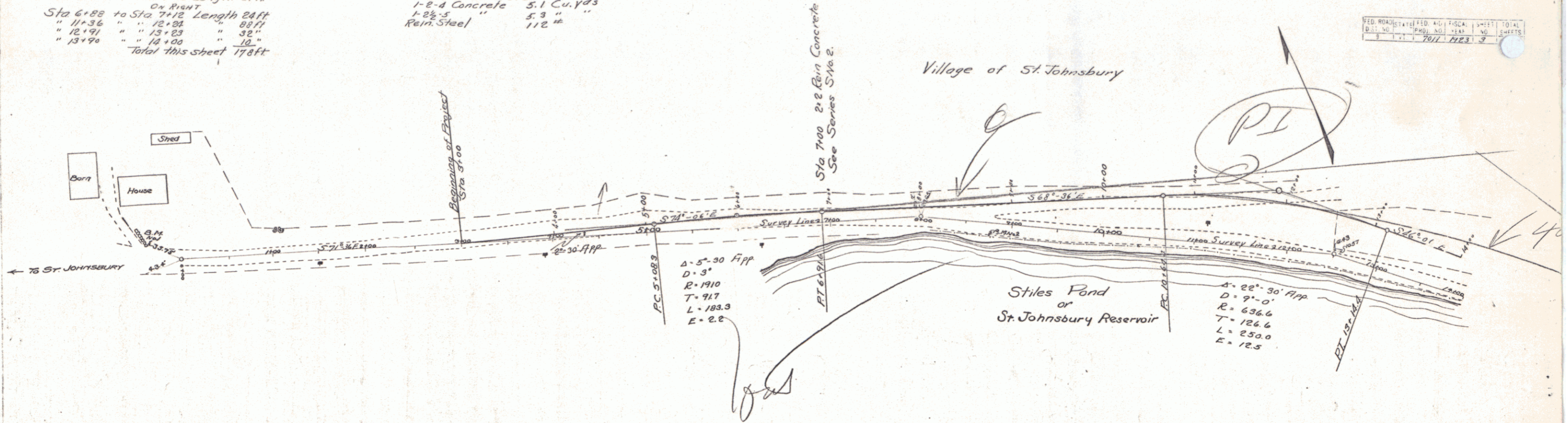
SERIES F No 70A FILED
 SHEET 1 OF 21

DIST. # 7 PLANS
 7

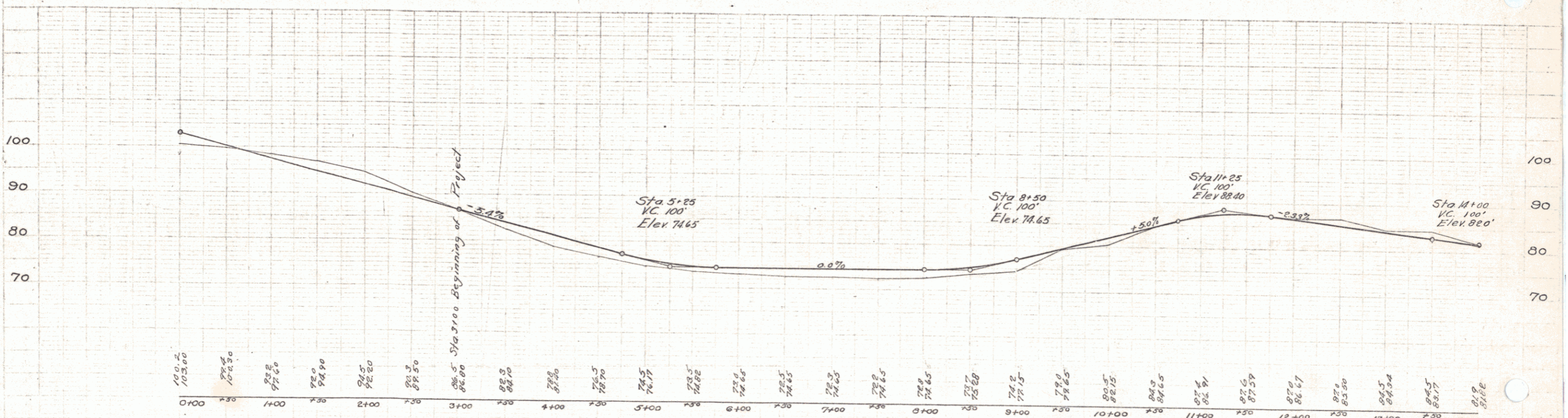
GUARD RAIL REQUIRED
 ON LEFT
 Sta 6+88 to Sta 7+12 Length 24ft
 ON RIGHT
 Sta 6+88 to Sta 7+12 Length 24ft
 " 11+36 " " 12+02 " 66ft
 " 12+91 " " 13+23 " 32"
 " 13+90 " " 14+00 " 10"
 Total this sheet 178ft

NEW CULVERTS REQUIRED
 Sta 7+00 2x2 Rein Concrete 5.1 Cu. yds
 1-8" Concrete 5.3 " "
 Rein. Steel 112 #

FED. ROAD DIST. NO.	STATE	FISCAL YEAR	SHEET NO.	TOTAL SHEETS
101	VT	1922	3	3



M.C. Bradley 93224



Series P. No. 70 H. Filed Sheet 3 of 21

GUARD RAIL REQUIRED

Station	Length	Notes
Sta. 17+88 to Sta. 18+12	24 ft.	ON LEFT
" 18+88 " " 19+12	" 24 "	"
" 19+88 " " 20+12	" 24 "	"
" 20+88 " " 21+12	" 24 "	"
Sta. 14+00 to Sta. 14+38	38 ft.	ON RIGHT
" 16+52 " " 16+84	" 32 "	"
" 17+55 " " 18+83	" 128 "	"
" 18+88 " " 19+12	" 24 "	"
" 19+88 " " 20+12	" 24 "	"
" 20+88 " " 21+12	" 24 "	"
" 21+88 " " 22+12	" 24 "	"
" 22+88 " " 23+12	" 24 "	"
" 23+88 " " 24+12	" 24 "	"
Total this sheet 366 ft		

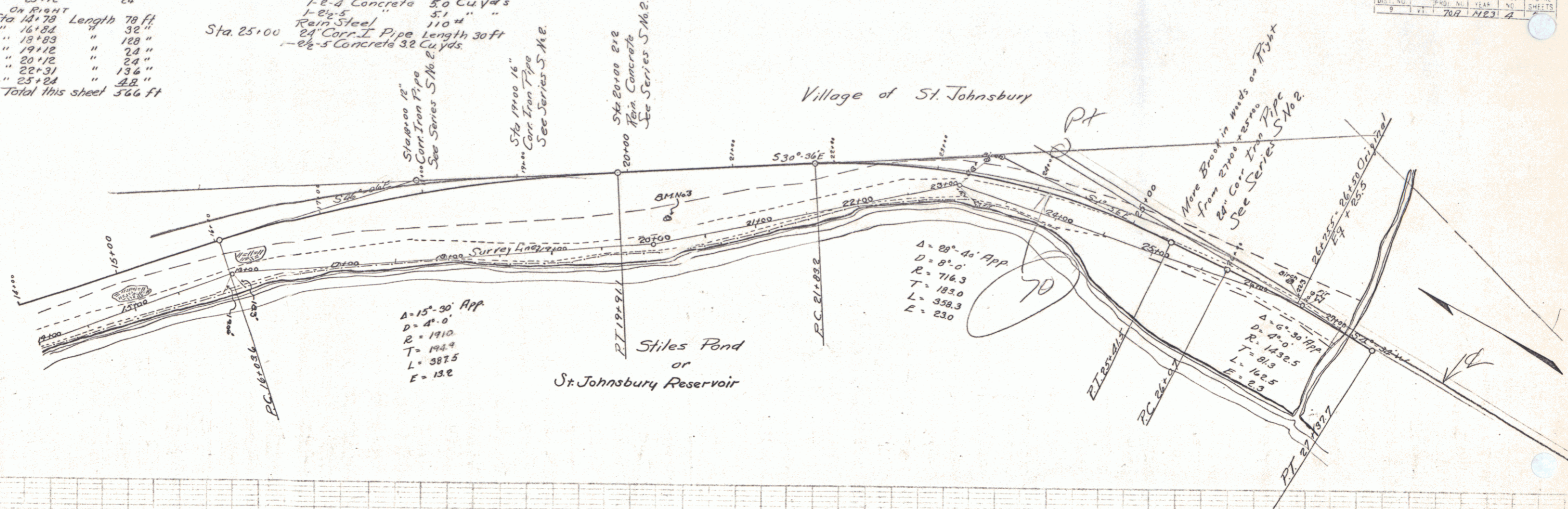
NEW CULVERTS REQUIRED

Sta. 19+00	16" Cor-I Pipe Length 26'
	1-2 1/2 Concrete 10 Cu yds.
Sta. 20+00	24" Rein Concrete 30 Cu yds
	1-2 1/2 Concrete 51 " "
	Rein Steel 110 "
Sta. 25+00	24" Cor-I Pipe Length 30ft
	1-2 1/2 Concrete 32 Cu yds.

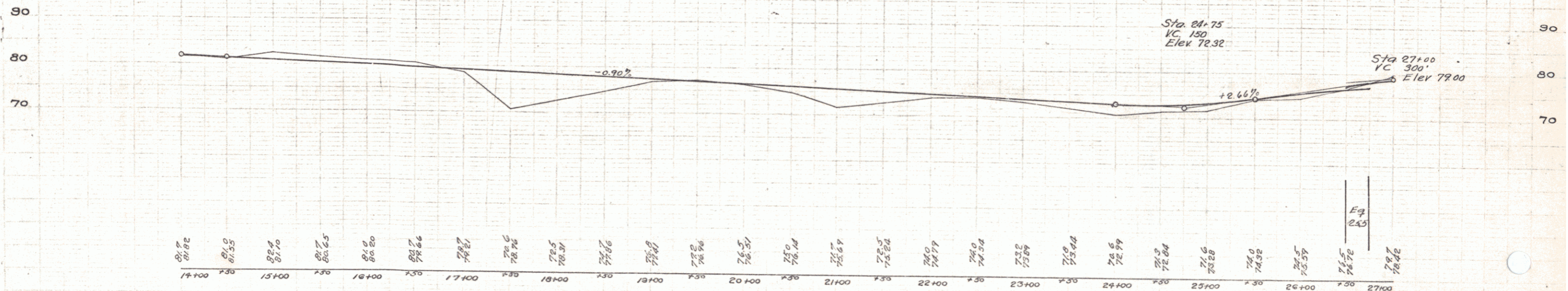
RELAYING PIPE CULVERT
 Sta. 18+00 12" Cor-I Pipe Length 96ft
 1-2 1/2 Concrete 15 Cu yds.

SUB-BASE REQUIRED
 Sta. 26+50 to Sta. 27+00 Length 50ft

FEED ROAD	STATIONED	PLAN	SCALE	SHEET	TOTAL
1	1	700	2163	4	



McBrideley Points



B.M. 3 Spike in Birch Left Sta 20+50 Elev 79.14

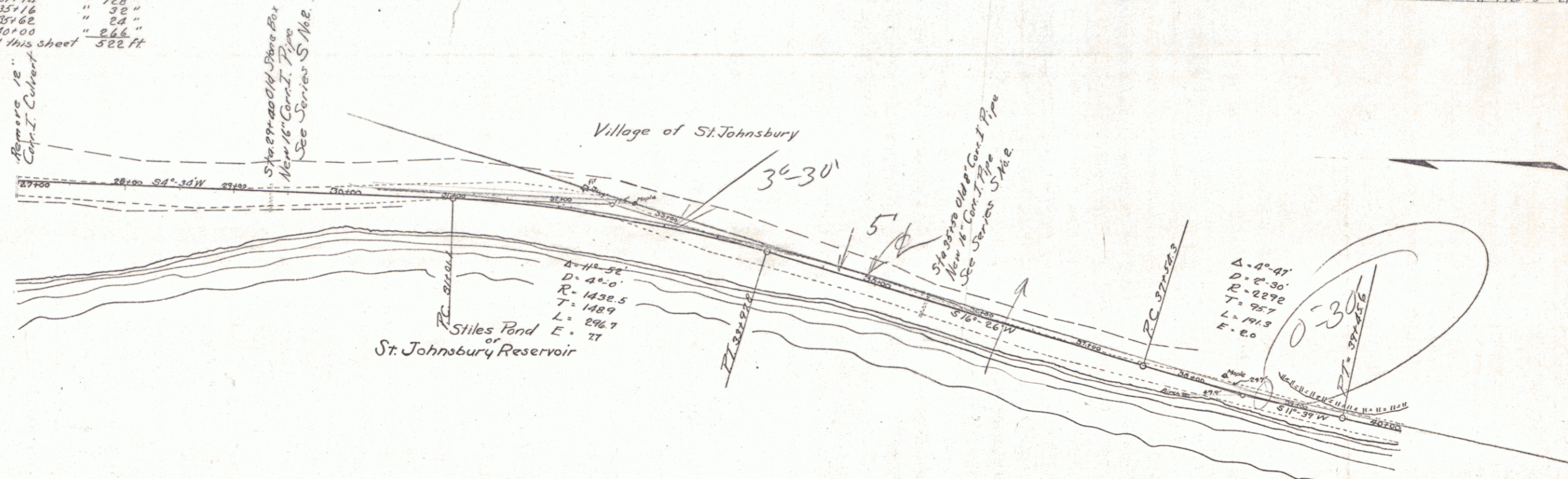
Series F No. 707 Filed
 Sheet 2 of 21

GUARD RAIL REQUIRED
 ON LEFT
 Sta. 29+28 to Sta. 29+52 Length 24ft
 " 35+38 " " 35+62 " 24"
 ON RIGHT
 Sta. 29+28 to Sta. 29+52 Length 24ft
 " 29+86 " " 35+14 " 188"
 " 34+84 " " 35+14 " 30"
 " 35+38 " " 35+62 " 24"
 " 37+34 " " 40+00 " 266"
 Total this sheet 522 ft

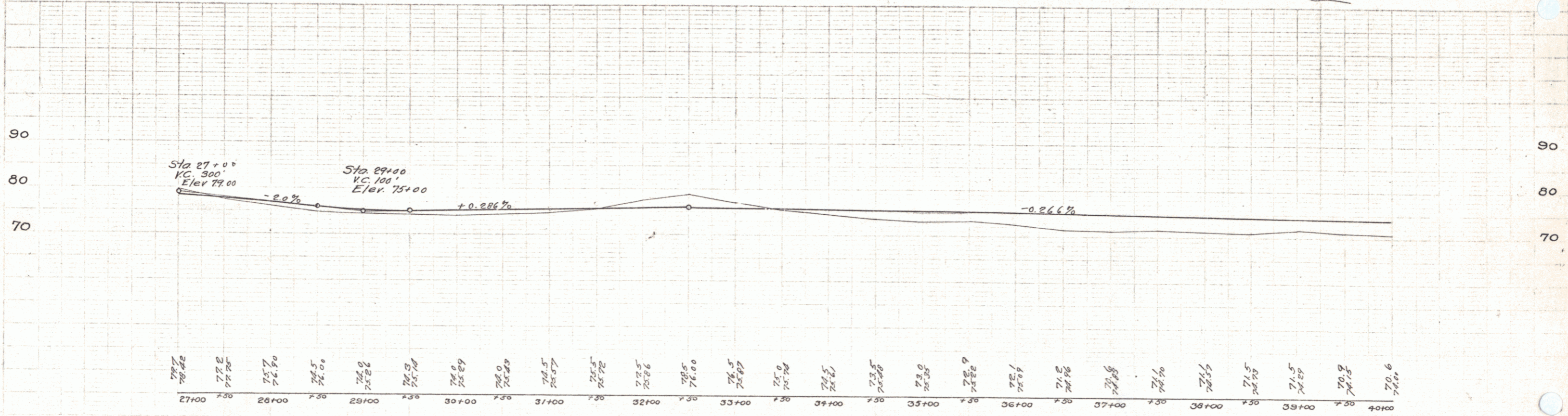
NEW CULVERTS REQUIRED
 Sta. 29+40 16" Corrt. Pipe Length 28ft
 1-8" Concrete 18 Cu yds.
 Sta. 35+50 16" Corrt. Pipe Length 28ft
 1-8" Concrete 18 Cu yds.

SUBBASE REQUIRED
 Sta. 27+00 to Sta. 38+50 Length 750ft

FED. ROAD DIST. NO.	STATE	FED. AID	FISCAL YEAR	SHEET NO.	TOTAL SHEETS
1	Vt.	704	1923	5	21



M.C. Brodley 7044

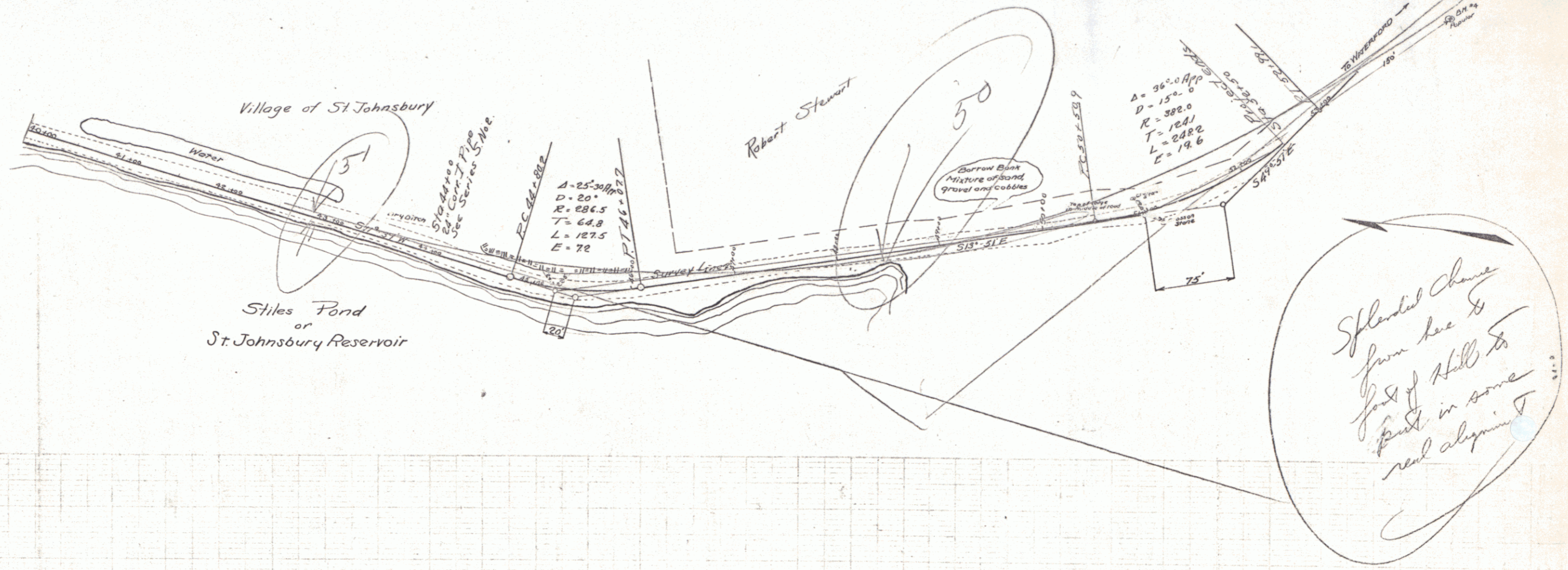


Series F No. 7671 Filed
Sheet 5 of 21

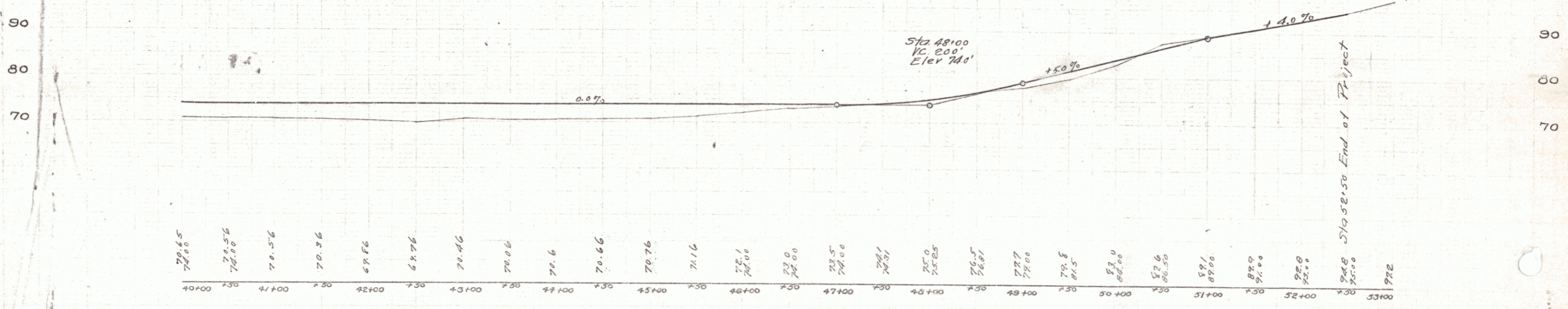
GUARD RAIL REQUIRED
 Sta 40+35 to Sta 43+15 Length 280 ft
 Sta 43+38 to Sta 44+12 Length 74 ft
 " 44+34 " " 44+66 " 32 "
 ON RIGHT
 Sta 40+00 to Sta 46+22 Length 622 ft
 " 46+86 " " 48+70 " 184 "
 Total this sheet 1102 ft

NEW CULVERTS REQUIRED
 Sta. 44+00 24" Cor. I Pipe Length 36 ft
 " 2 1/2 - 5' Concrete 32 Cu yds.

ALL ROAD STATED AND PLOTTED
 BY THE STATE DEPT. OF HIGHWAYS
 DIVISION OF HIGHWAYS
 PROJECT NO. 1001
 SHEET NO. 21
 DATE 10/1/1923



M.C. Bradley 1914



B.M. A Spike in Paper 150' East of Sta. 53+00 Elev. 98.15

Series F No. 70A Fitted Sheet 6 of 21