

GUARD RAIL REQUIRED

Station	Length	Notes
Sta. 17+88 to Sta. 18+12	24 ft	ON LEFT
" 18+88 " " 19+12	24 "	"
" 19+88 " " 20+12	24 "	"
" 20+88 " " 21+12	24 "	"
Sta. 14+00 to Sta. 14+78	78 ft	ON RIGHT
" 16+52 " " 16+84	32 "	"
" 17+55 " " 18+83	128 "	"
" 18+88 " " 19+12	24 "	"
" 19+88 " " 20+12	24 "	"
" 20+88 " " 21+12	24 "	"
" 21+88 " " 22+12	24 "	"
" 22+88 " " 23+12	24 "	"
" 23+88 " " 24+12	24 "	"
Total this sheet 366 ft		

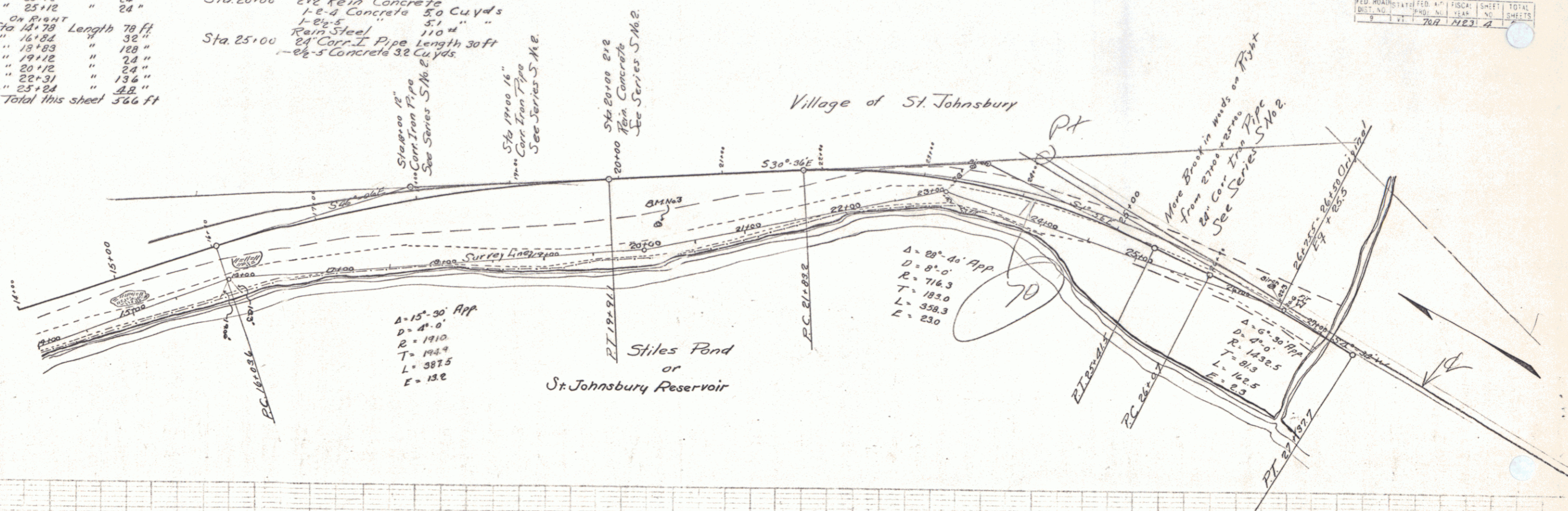
NEW CULVERTS REQUIRED

Sta. 19+00	16" Cor-I Pipe Length 26'	1-2 1/2 Concrete 10 Cu yds.
Sta. 20+00	24" Rein Concrete	30 Cu yds
	1-2-8 Concrete	51 " "
	1-2-5	" "
	Rein Steel	110 "
Sta. 25+00	24" Cor-I Pipe Length 30ft	2-2 1/2 Concrete 32 Cu yds.

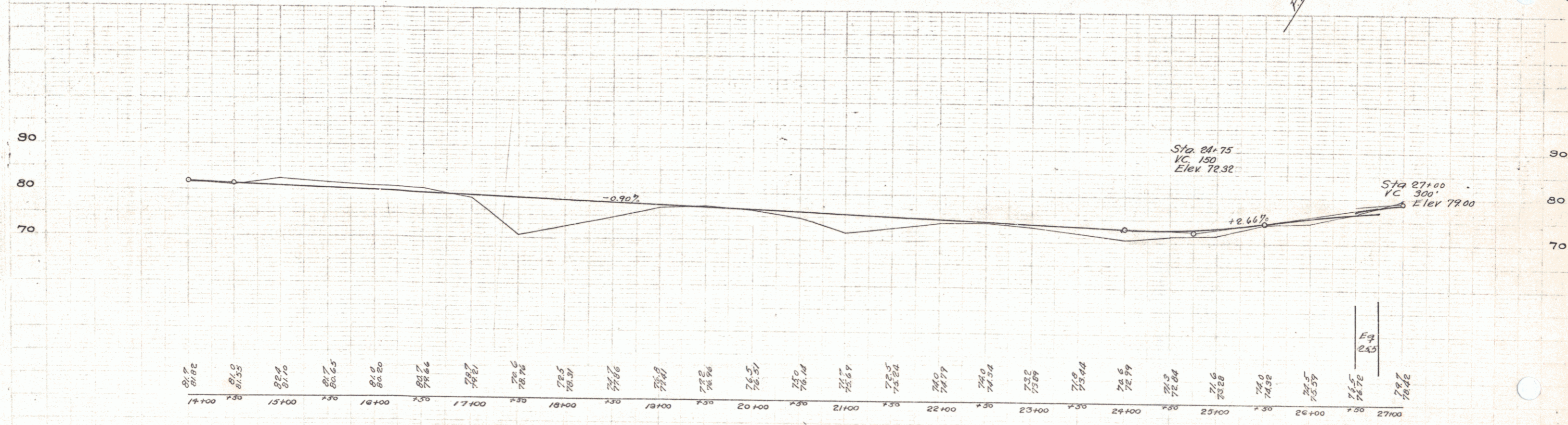
RELAYING PIPE CULVERT
 Sta. 18+00 12" Cor-I Pipe Length 96ft
 1-2 1/2 Concrete 15 Cu yds.

SUB-BASE REQUIRED
 Sta. 26+50 to Sta. 27+00 Length 50ft

FEED ROAD	STATIONED	PLAN	SECTION	TOTAL SHEETS
700	1	700	2163	4



McBrideley Points



B.M. 3 Spike in Birch Left Sta 20+50 Elev 79.14

Series No. 707 Filed
 Sheet 2 of 21