

INDEX OF SHEETS

SHEET NO. 1	TITLE PAGE
" 2	TYPICAL CROSS-SECTION OF IMPROVEMENT — GRADING, DRAINAGE, DISE & GUARD RAIL, WITH DOUBLE TRACK COAT OF REFINED TAR (ITEM-22)
" 3	BANKING AND WIDENING TABLES
" 4	PLAN AND PROFILE SHEETS
" 5	STANDARD STRUCTURE SHEET 3-30 GUARD RAIL
" 6	" " " 3-40 BARRICADES, SIGNS & LIGHTS
" 7	CROSS SECTION SHEETS

STANDARD STRUCTURE SHEETS APPROVED BY THE CHIEF ENGINEER, 3 30 AUGUST 15, 1933

STATE OF VERMONT  
STATE HIGHWAY DEPARTMENT

PLAN AND PROFILE OF PROPOSED  
STATE HIGHWAY  
FEDERAL AID PROJECT

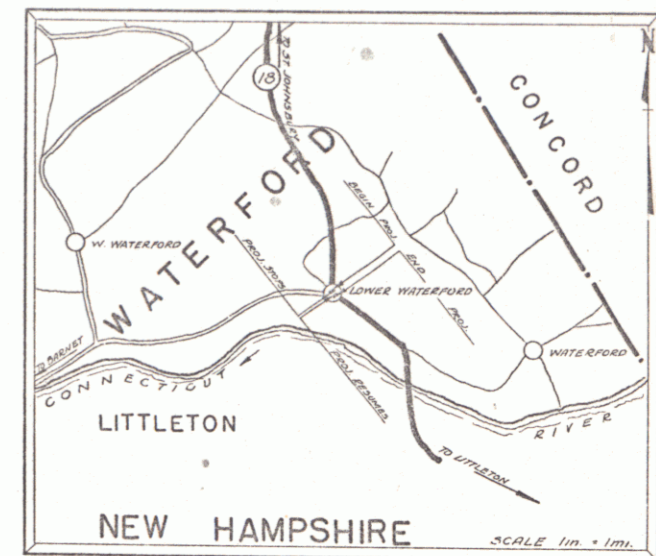
TOWN OF WATERFORD

ST. JOHNSBURY VT. - LITTLETON N.H. ROAD

BEGINNING AT A POINT 1.188 MILES NORTHERLY OF THE INTERSTATE BRIDGE  
PROJECT 263 AND EXTENDING SOUTHERLY 0.066 MILES  
LENGTH OF PROJECT EXCL. BRIDGE 236 FT. = 0.044 MILES

FED. ROAD DIST. NO.	STATE	FED. AID PROJ. NO.	FISCAL YEAR	SHEET NO.	TOTAL SHEETS
9	Vt.	70-D	1936	1	7

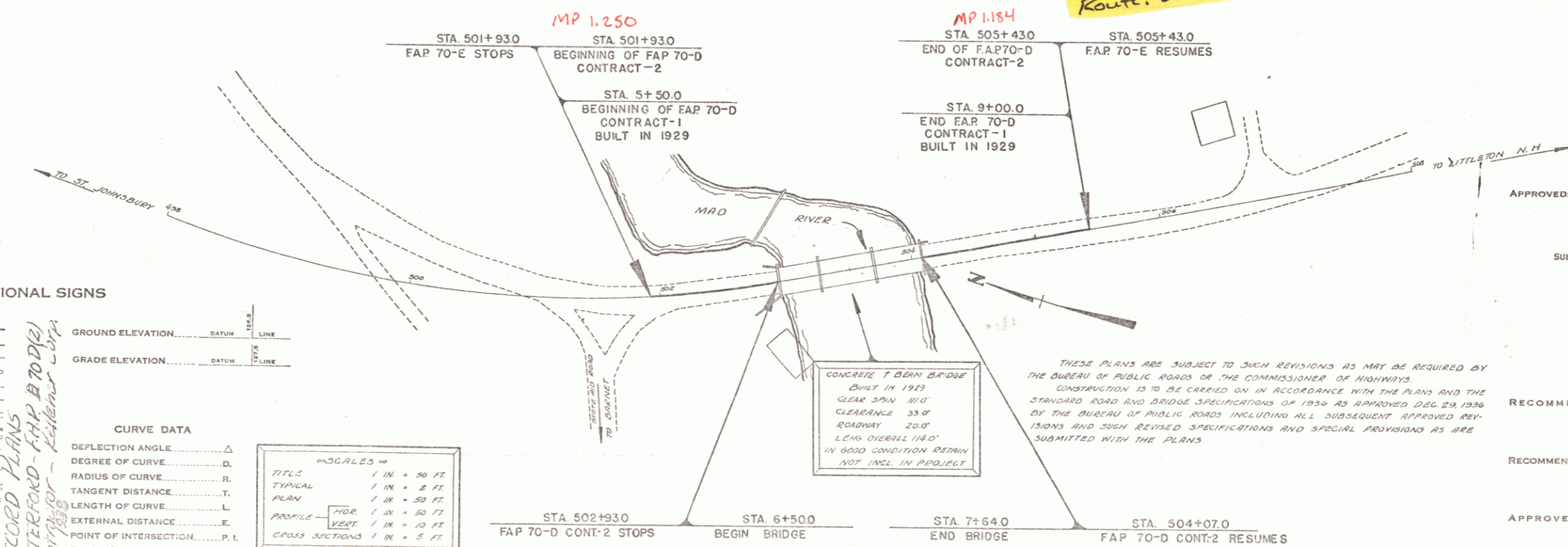
CONTRACT-2



(To Be Returned To R.O.W. Division)  
Town of Waterford  
Perpetual  
Town File  
Highway-Map Division  
MP 1.20  
B 115

PROJECT: FAP 70-D  
P.N.: 00R548  
Route: VT 115

RECORD PLANS



CONVENTIONAL SIGNS

COUNTY LINE	GROUND ELEVATION
TOWN LINE	GRADE ELEVATION
FENCE LINE	
STONE WALL	
UNFENCED PROPERTY	
GUARD RAIL	
TRAVELED WAY	
RAILROAD	
RETAINING WALL	
CENTER LINE	
SURVEY LINE	
CULVERT	
DROP INLET	
TROLLEY POLE	
POWER POLE	
TELEPHONE POLE	
TREES	
HEDGE	

SCALES

TITLE	1 IN. = 50 FT.
TYPICAL	1 IN. = 5 FT.
PLAN	1 IN. = 50 FT.
PROFILE	1 IN. = 50 FT.
VERT	1 IN. = 10 FT.
CROSS SECTIONS	1 IN. = 5 FT.

CONCRETE T-BEAM BRIDGE  
BUILT IN 1929  
CLEAR SPAN 110'  
CLEARANCE 33'  
ROADWAY 23.0'  
LENG OVERALL 118.0'  
IN GOOD CONDITION REMAIN  
NOT INCL IN PROJECT

THESE PLANS ARE SUBJECT TO SUCH REVISIONS AS MAY BE REQUIRED BY THE BUREAU OF PUBLIC ROADS OR THE COMMISSIONER OF HIGHWAYS. CONSTRUCTION IS TO BE CARRIED ON IN ACCORDANCE WITH THE PLANS AND THE STANDARD ROAD AND BRIDGE SPECIFICATIONS OF 1936 AS APPROVED DEC 29, 1936 BY THE BUREAU OF PUBLIC ROADS INCLUDING ALL SUBSEQUENT APPROVED REVISIONS AND SUCH REVISED SPECIFICATIONS AND SPECIAL PROVISIONS AS ARE SUBMITTED WITH THE PLANS.

APPROVED: June 1, 1937  
The Sargent  
COMMISSIONER OF HIGHWAYS  
SUBMITTED BY ORDER OF THE STATE HIGHWAY BOARD

RECOMMENDED [Signature]  
DISTRICT ENGINEER BUREAU OF PUBLIC ROADS  
RECOMMENDED FOR APPROVAL [Signature]  
CHIEF ENGINEER BUREAU OF PUBLIC ROADS  
APPROVED [Signature]  
DIRECTOR - BUREAU OF PUBLIC ROADS

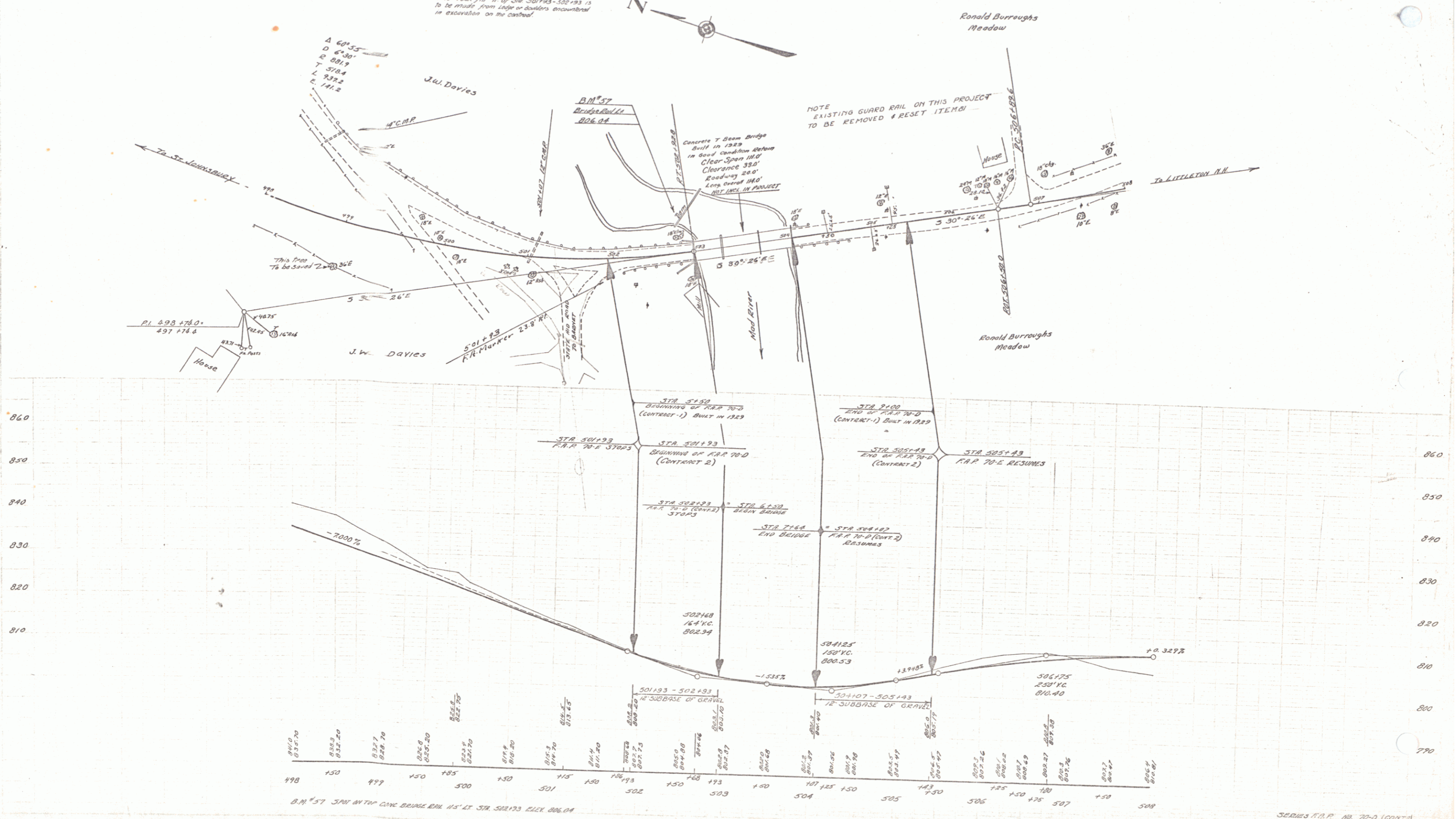
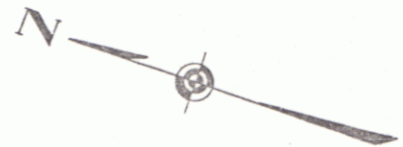
APPROVED: May 19, 1937  
[Signature]  
DISTRICT HIGHWAY COMMISSIONER

APPROVED: June 1, 1937  
[Signature]  
ROAD ENGINEER

SERIES FAP NO. 70-D FILED  
CONTRACT-2  
SHEET 1 OF 7

Dist # 7 1

The rock fill # of 50+193-50+193 is to be made from ledge or boulders encountered in excavation on the contract.



INDEX OF SHEETS

SHEET NO. 1	TITLE PAGE
" "	" 2 TYPICAL CROSS-SECTION OF IMPROVEMENT 24" GRAVEL
" "	" 3 PLAN AND PROFILE
" "	" 4 SERIES STB. 20 NO. 35' SPAN WITHOUT GRAVEL
" "	" 5 SERIES SB. NO. 5 GABLE RAIL DETAILS
" "	" 6 DETAILS ABUTMENT NO. 1
" "	" 7 SERIES SR. NO. 1 PIER DETAILS = H 27' WITHOUT PILES
" "	" 8 DETAILS ABUTMENT NO. 2
" "	" 9 SERIES SB. NO. 2 STANDARD DETAILS
" "	" 10 SERIES SB. NO. 2A
" "	" 11-12-13 CROSS SECTIONS
" "	" 14-15 SERIES S NOS. 20 AND 22

FED. ROAD DIST. NO.	STATE	FED. AID PROJ. NO.	FISCAL YEAR	SHEET NO.	TOTAL SHEETS
9	Vt.	700	1929	1	15

STATE OF VERMONT  
STATE HIGHWAY DEPARTMENT

PLAN AND PROFILE OF PROPOSED  
STATE HIGHWAY  
FEDERAL AID PROJECT

TOWN OF WATERFORD  
BRIDGE AT LOWER WATERFORD VILLAGE  
OVER MAD BROOK

LOCATED ON ROAD FROM ST. JOHNSBURY  
TO LITTLETON N.H.

LENGTH	250	FEET	= .0473	MILES	BRIDGE & APPROACHES
"	10.0	"	.0189	"	ROAD
TOTAL	350	"	.0662	"	

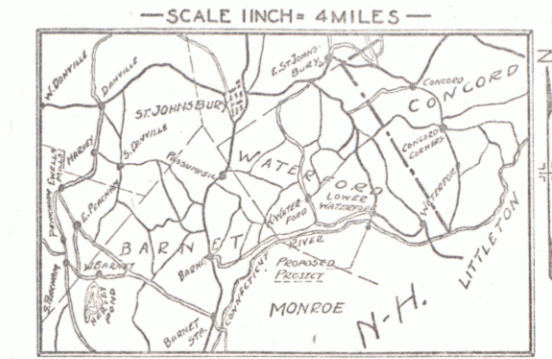
FOR LAYOUT SEE SHEET NO. 3

SCALES

PLAN 20 FT. =	1 INCH
VERTICAL 20 FT. =	1 INCH
HORIZONTAL 20 FT. =	1 INCH
SECTIONS 5 FT. =	1 INCH

THIS PROJECT TO BE CONSTRUCTED IN ACCORDANCE WITH STANDARD SPECIFICATIONS ON FILE WITH THE U. S. BUREAU OF PUBLIC ROADS. APPROVED 7/7/28.

THESE PLANS ARE SUBJECT TO SUCH REVISIONS AS MAY BE REQUIRED BY THE U. S. BUREAU OF PUBLIC ROADS, OR THE ENGINEER.



Dist # 7 plans

ROUTE: VT  
TOWN: WATERFORD  
PROJECT: FAP 70-D

Station 5-9

BRIDGE NO 70D  
DISTRICT NO. 10  
WATERFORD

APPROVED: May 18 1929  
*H. E. Sargent*  
CHIEF ENGINEER  
SUBMITTED BY ORDER OF THE STATE HIGHWAY BOARD  
*S. P. Bates*  
COMMISSIONER OF HIGHWAYS

RECOMMENDED [ ]  
DISTRICT ENGINEER BUREAU OF PUBLIC ROADS  
RECOMMENDED FOR APPROVAL [ ]  
CHIEF ENGINEER BUREAU OF PUBLIC ROADS  
APPROVED [ ]  
DIRECTOR - BUREAU OF PUBLIC ROADS

SERIES F.A.P. NO. 700 FILED  
SHEET 1 OF 15

Dist. # 7 plans 3

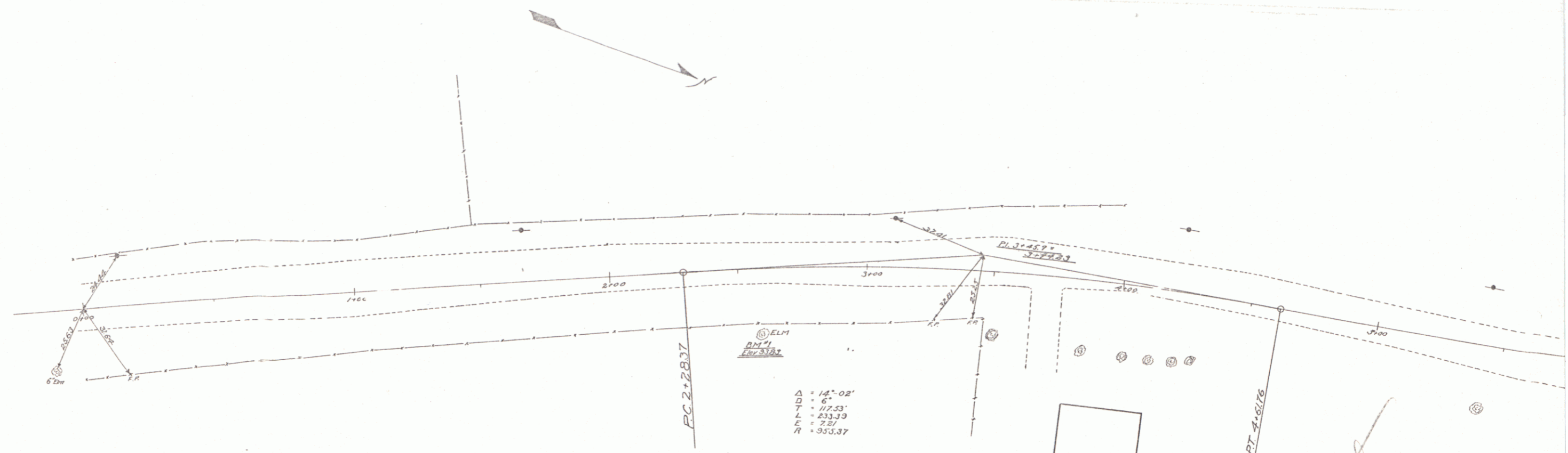
CONVENTIONAL SIGNS

COUNTY LINE	GROUND ELEVATION
TOWN LINE	DATE
FENCE LINE	DATE
STONE WALL	DATE
UNFENCED PROPERTY	DATE
GUARD RAIL	DATE
TRAVELED WAY	DATE
RAILROAD	DATE
RETAINING WALL	DATE
CENTER LINE	DATE
SURVEY LINE	DATE
CULVERT	DATE
DROP INLET	DATE
TROLLEY POLE	DATE
POWER POLE	DATE
TELEPHONE POLE	DATE
TREES	DATE
HEDGE	DATE

CURVE DATA

DEFLECTION ANGLE	Δ
DEGREE OF CURVE	D
RADIUS OF CURVE	R
TANGENT DISTANCE	T
LENGTH OF CURVE	L
EXTERNAL DISTANCE	E
POINT OF INTERSECTION	P. I.
POINT OF CURVE	P. C.
POINT OF TANGENT	P. T.
POINT ON TANGENT	P. O. T.

PLAN  
SCALE  
DATE

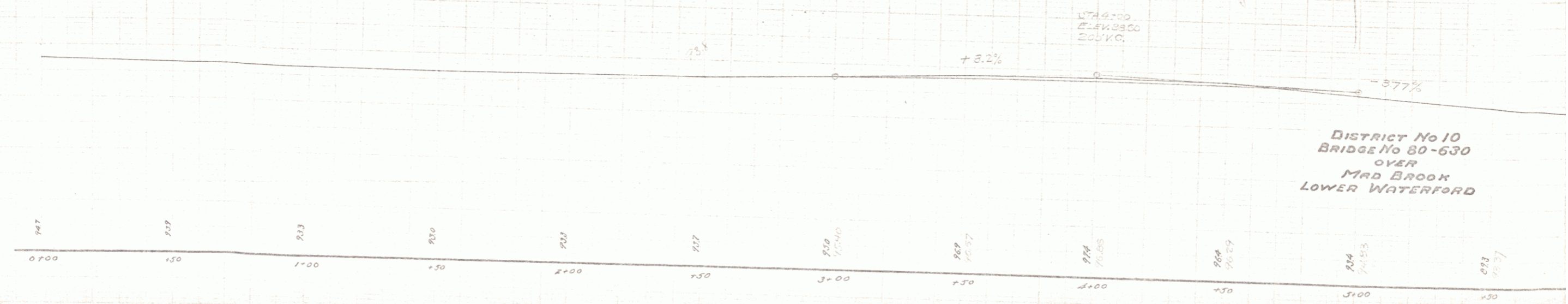


POOR ORIGINAL COPY

*Original*

B.M. Nol. Spike in root of elm 24' right sta. 2+58 Elev. 93.83

110  
100  
90  
80  
70  
60  
50

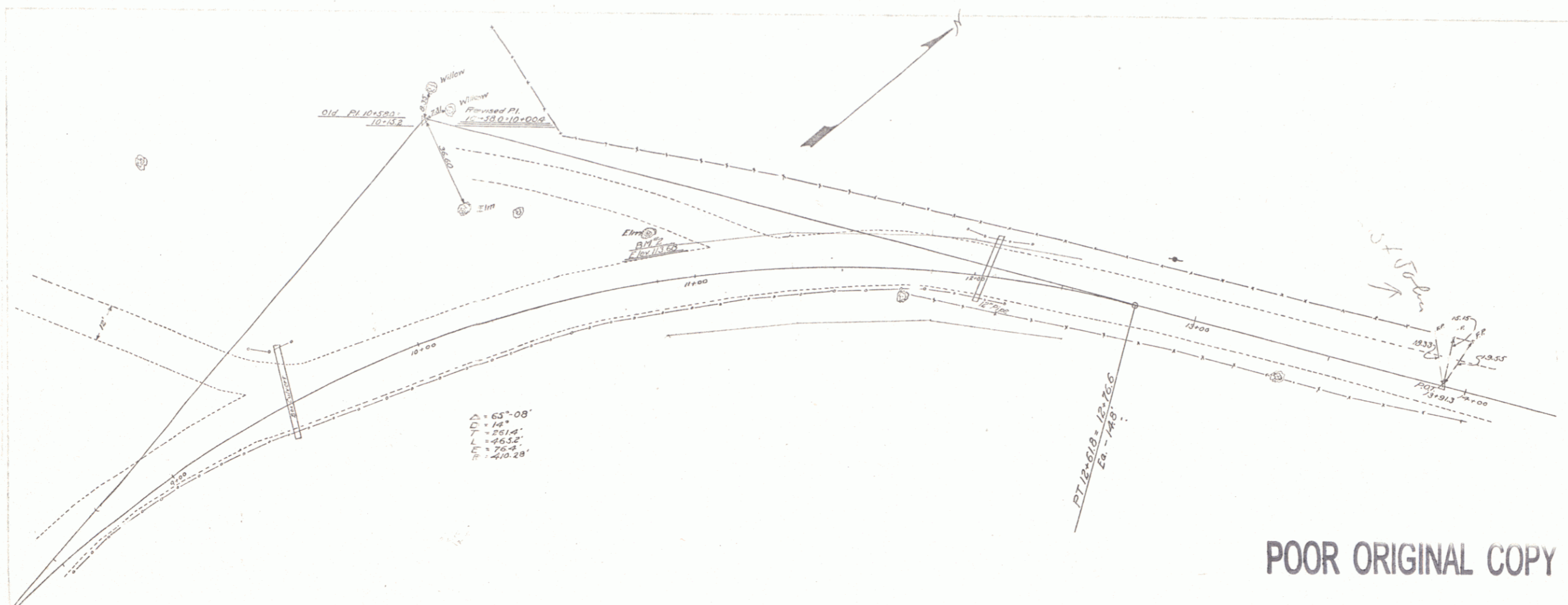


DISTRICT No 10  
BRIDGE No 80-630  
OVER  
MAD BROOK  
LOWER WATERFORD

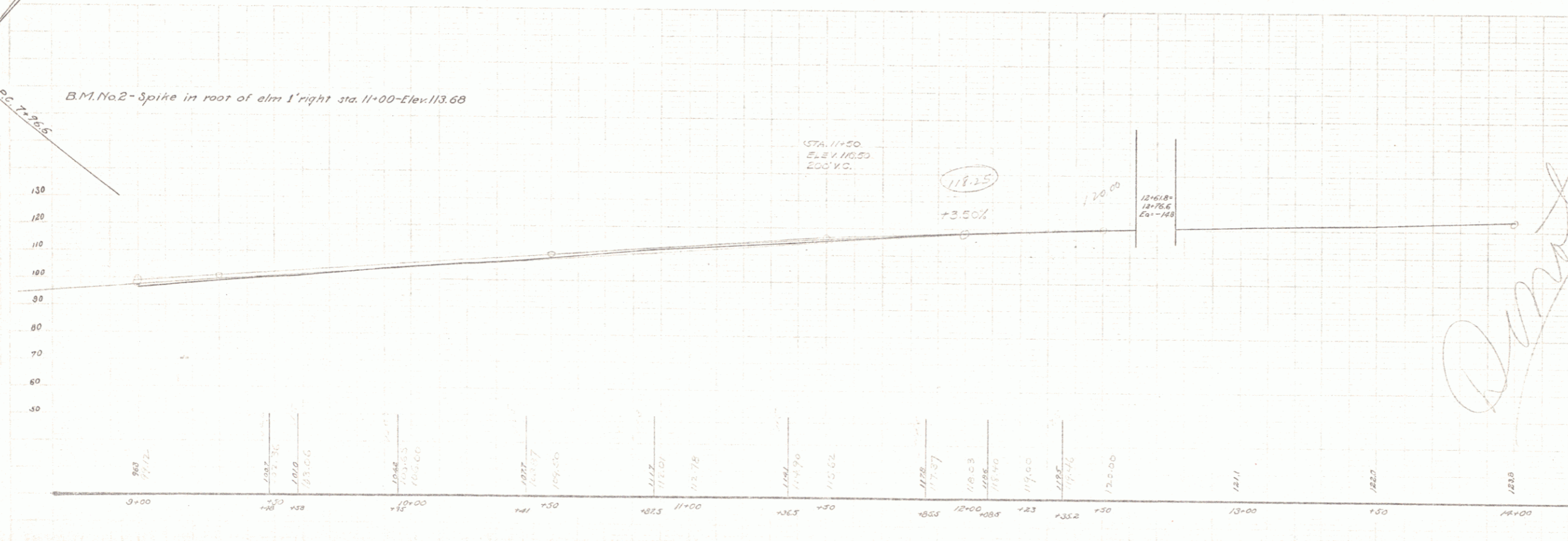
SHEET 2

4





POOR ORIGINAL COPY



DISTRICT No 10  
BRIDGE No 80-530  
OVER  
MAD BROOK  
LOWER WATERFORD

SHEET 4