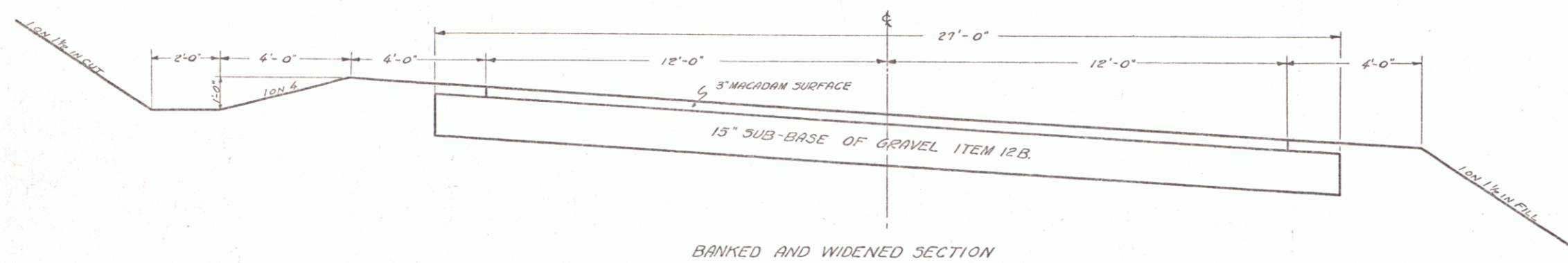
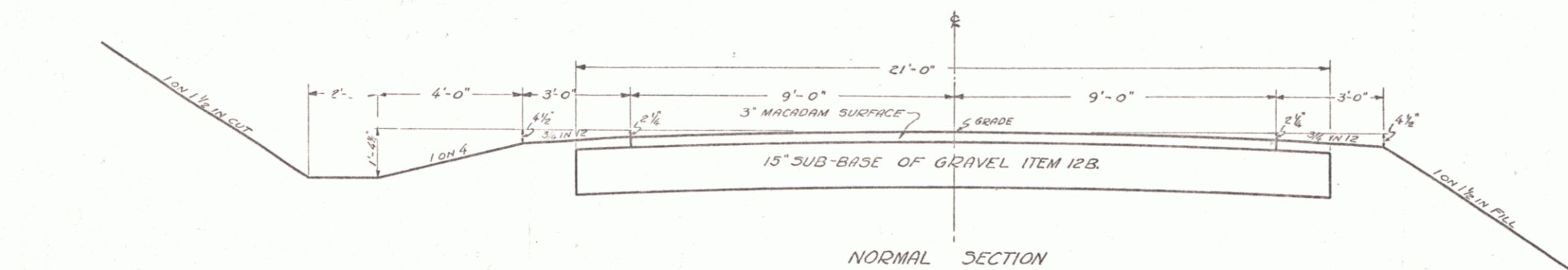


- INDEX OF SHEETS
- SHEET No. 1 - TYPICAL SECTIONS
 - 2-3 - PLAN AND PROFILE
 - 4-10 - CROSS SECTIONS
 - 11 - STD. SHEET 5-25 (PIPE CULVERTS)
 - 12 - " 5-30 (GUARD RAIL, ETC.)
 - 13 - " 5C-1 (BOX CULVERTS)
 - 14 - " 5B-11 (BARRICADES, SIGNS & LIGHTS)

STATE OF VERMONT
TYPICAL SECTIONS
3" MACADAM SURFACE

WATERFORD (1934)
NRH 70-E
No ROW SHOWN
On these plans

SCALES
PLAN 1"=50'
PROFILE { VERT. 1"=10'
 { HORIZ. 1"=50'
CROSS SECTIONS 1"=5'



MP 0.00 - 0.368
RIGHT-OF-WAY DIVISION
TOWN FILE
PERPETUAL
Rte. VT 18
Town of VT 18
(To Be Returned To R.O.W. Division)

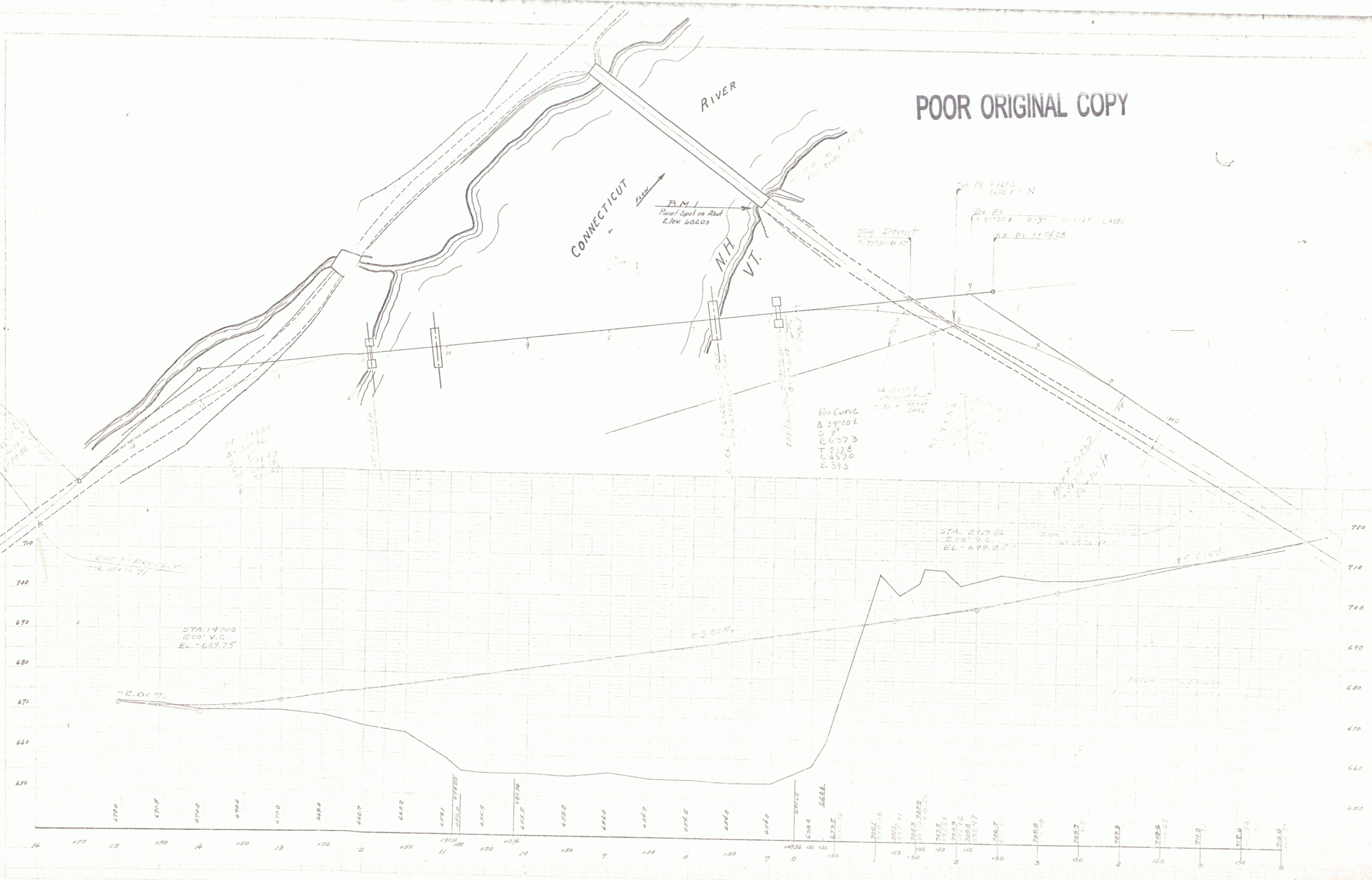
Route: VT 18
Town: WATERFORD
DATE: 04/07/34
PROJECT: NRH 70-E
PIN: 00R547

PROJECT	NO. 210 WATERFORD
NUMBER	NRH 70-E
TOWN	WATERFORD
DATE	APRIL 7, 1934
CONTRACTOR	
SECTION	1-2 STA. 300 + 35 - 398 + 99
SCALE	

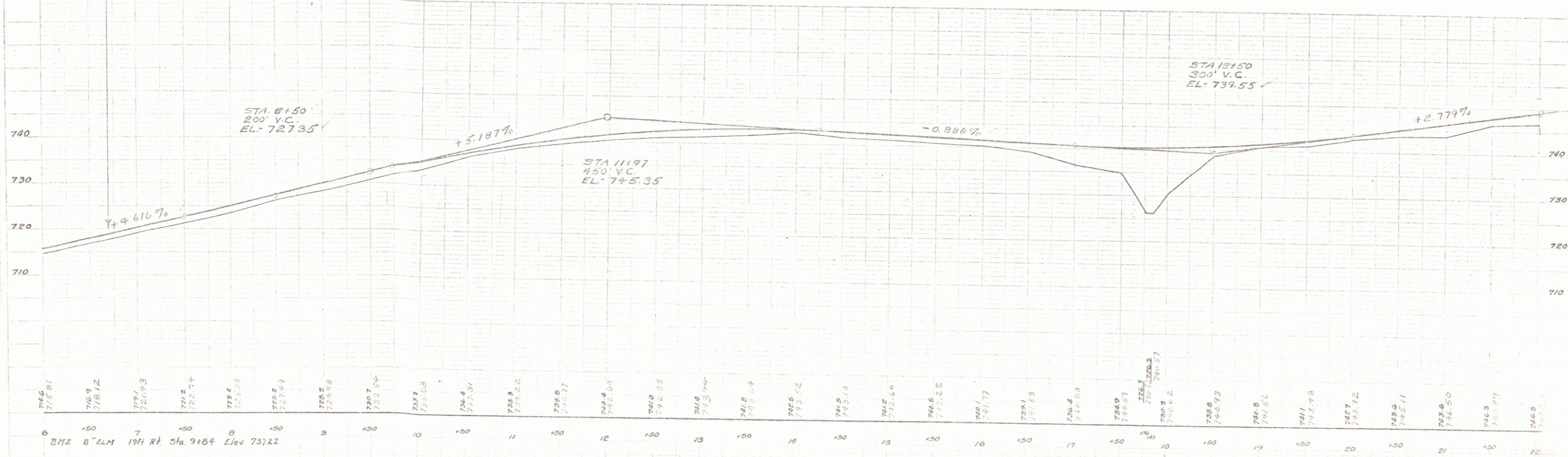
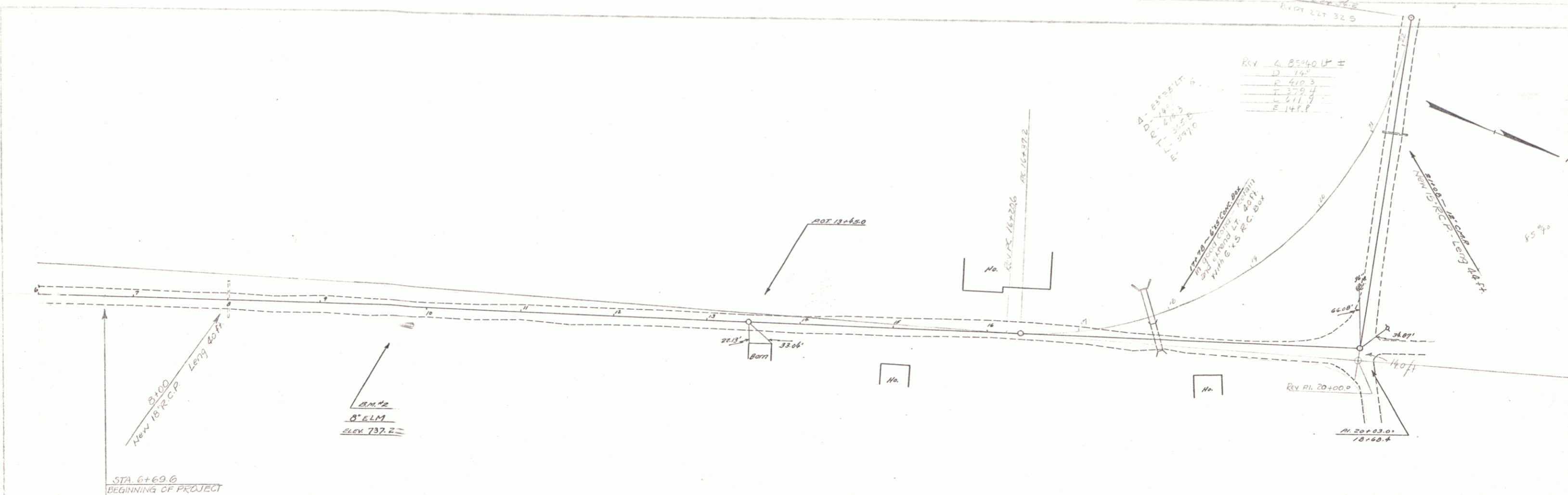
ESTIMATED QUANTITIES		WATERFORD	
		Surveyed by	
		Designed by	
		Drawn by	W.J. BROCK
		Traced by	
		Checked by	
		Series/Sheet No.	70-E
		Sheet No.	1 of 16 Sheets

DIST # 9 1

POOR ORIGINAL COPY

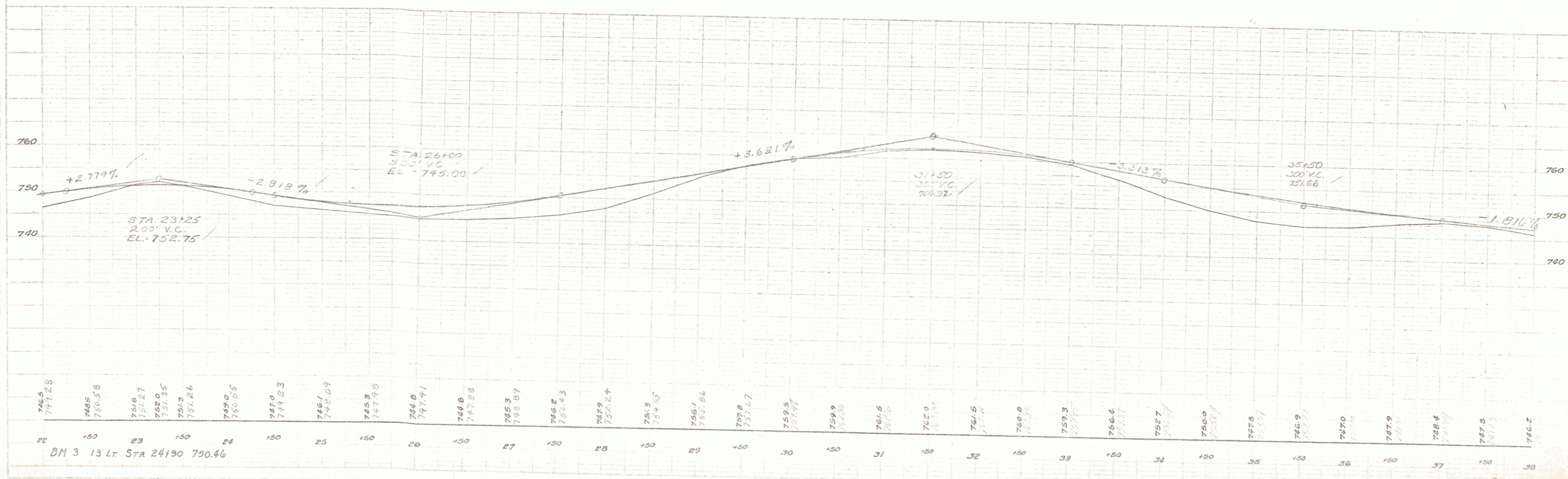
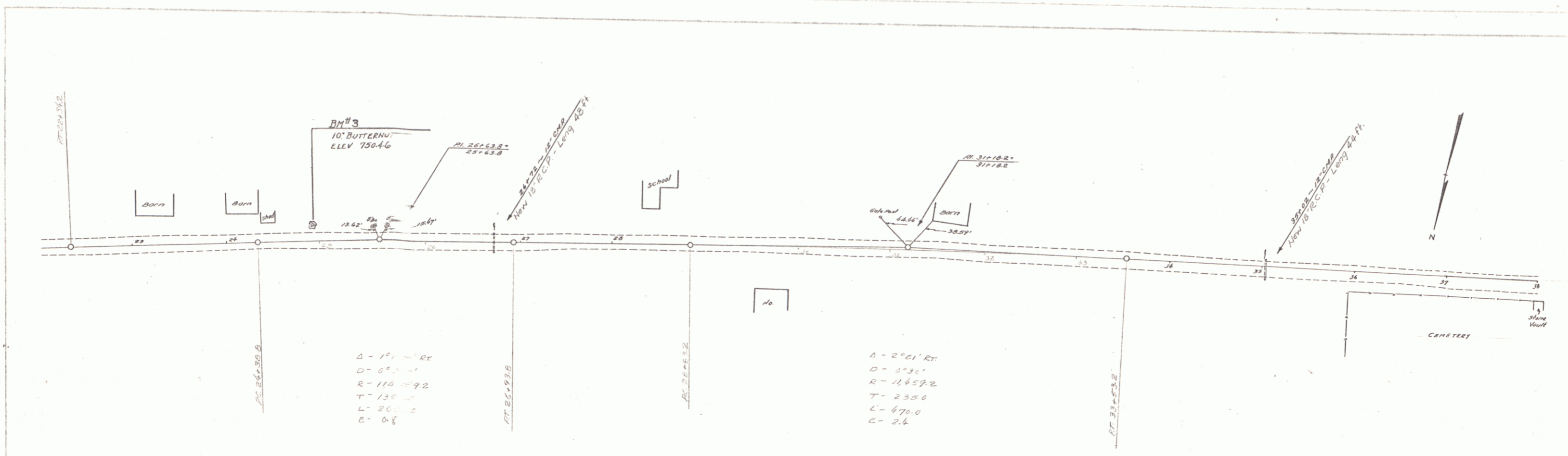


H. J. ...
 M.B. ...
 3/24
 3/24



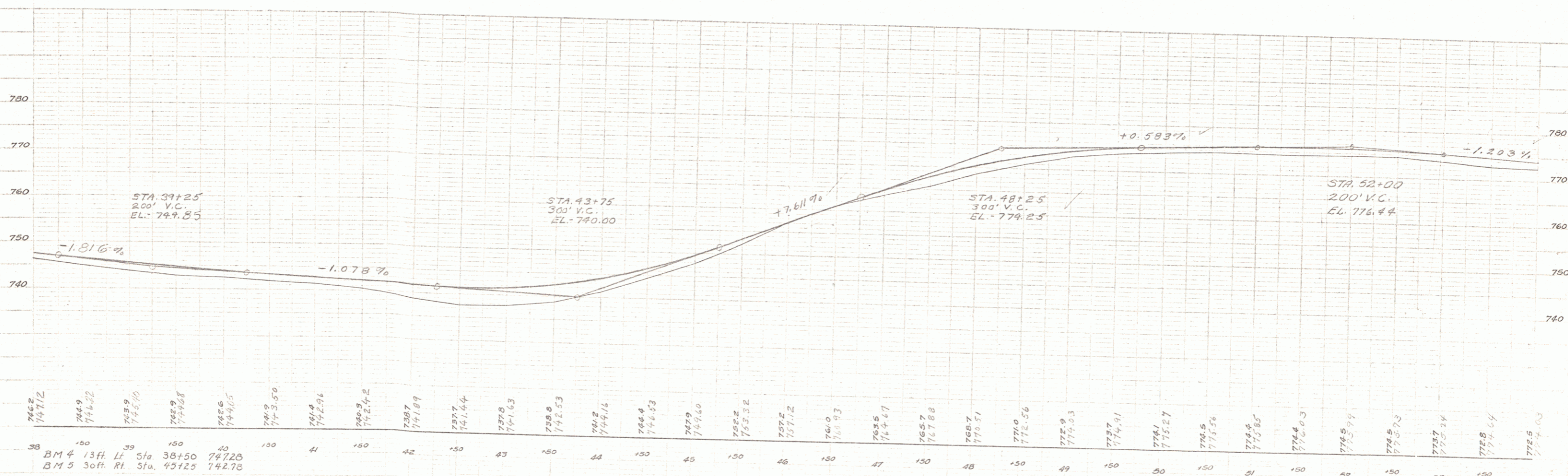
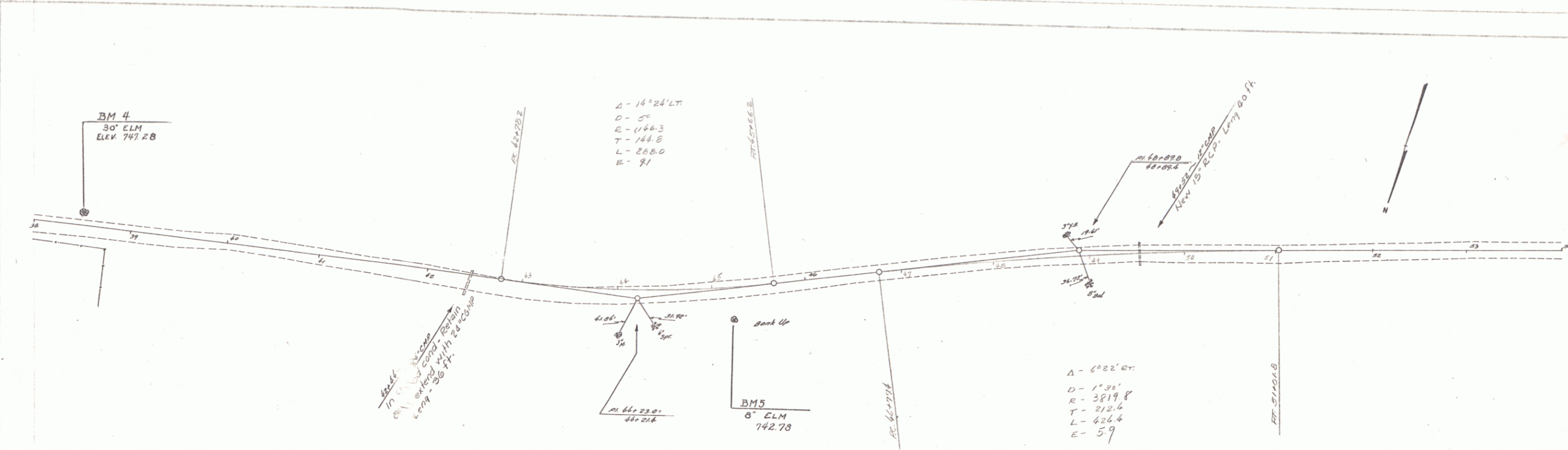
ELEVATION
 10' BUTTERNUT
 ELEV 750.46
 10' BUTTERNUT
 ELEV 750.46

STA. 23+25
 200' V.C.
 EL. 752.75



PLAN
 3/24/54
 304
 304

3/24/54
 304
 304

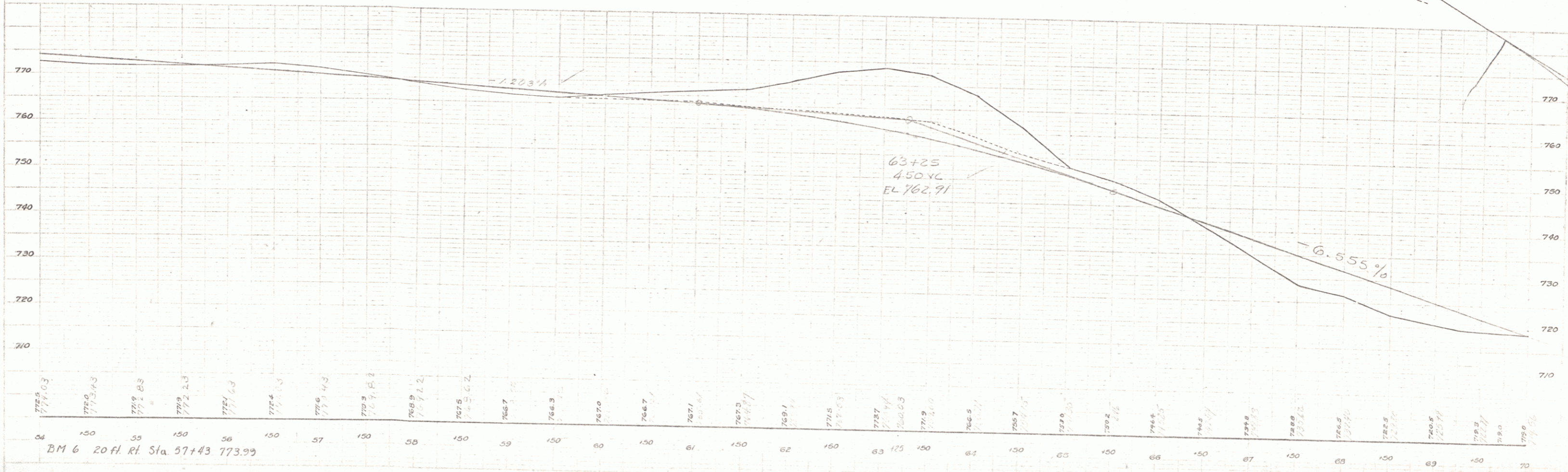
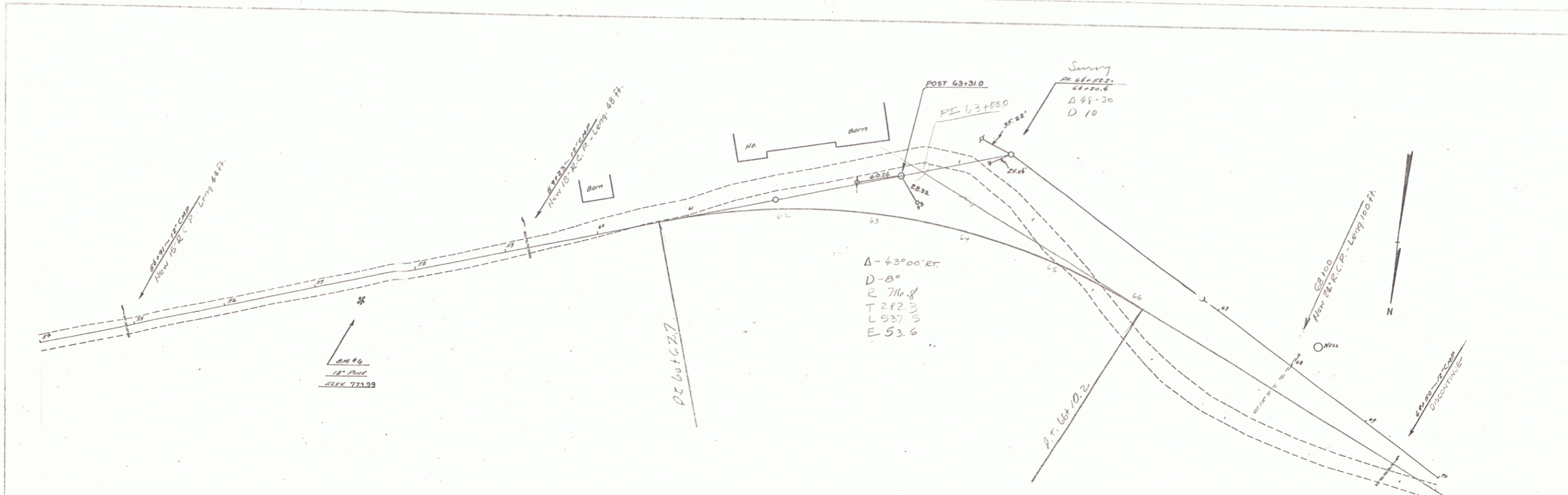


BM 4 13 ft. Lt. Sta. 38+50 747.28
 BM 5 30 ft. Rt. Sta. 45+25 742.78

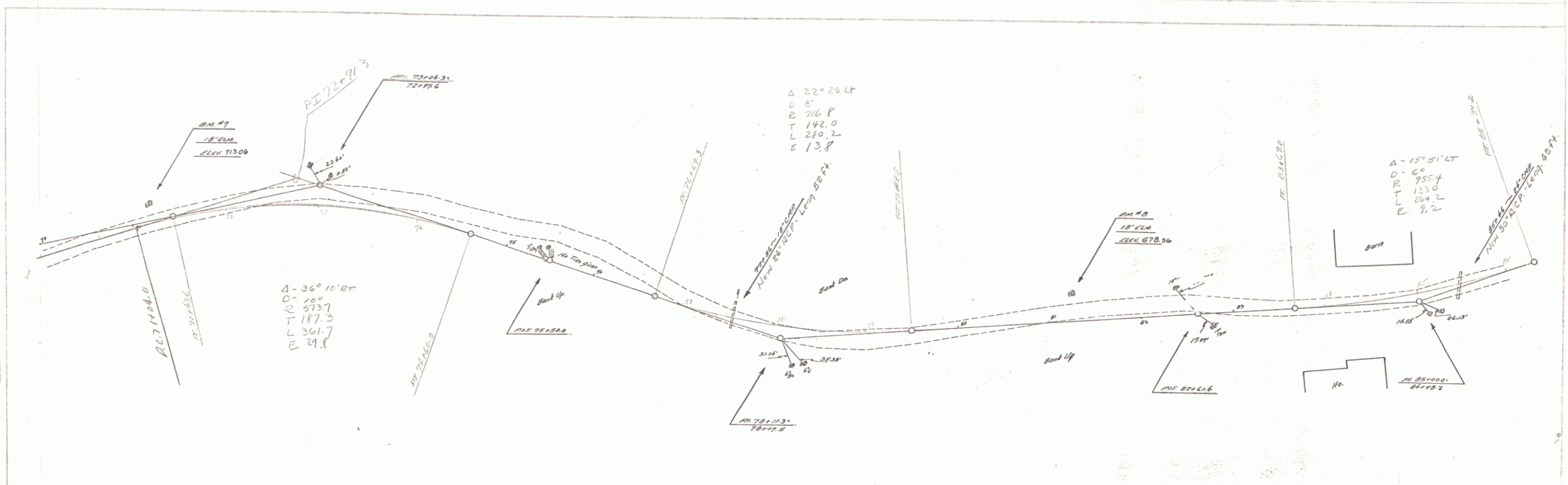
SHEET 5

PLAN
 A. C. Wood
 L. A. C. 12/1/20

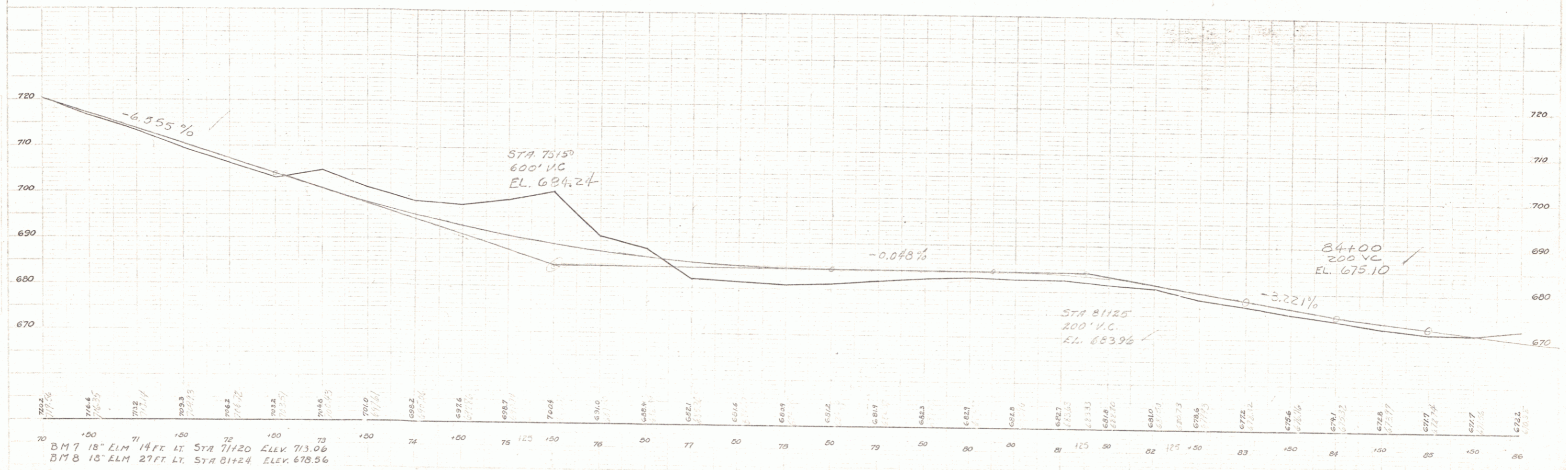
PLAN
 A. C. Wood
 L. A. C. 12/1/20



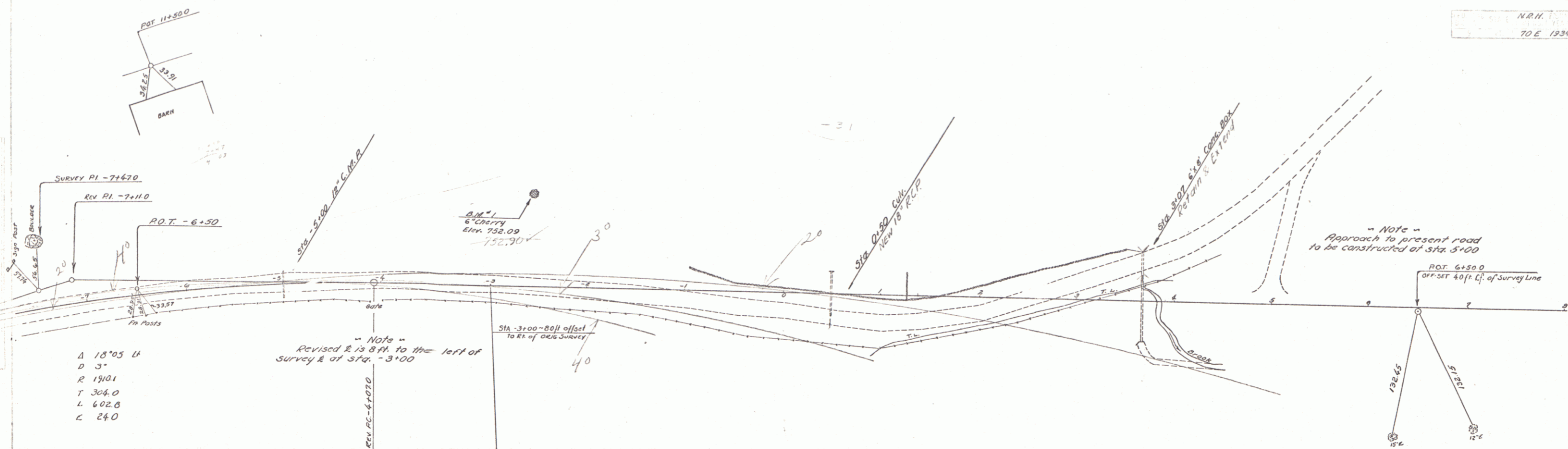
PLAN
 1/4" = 100'
 1/8" = 100'



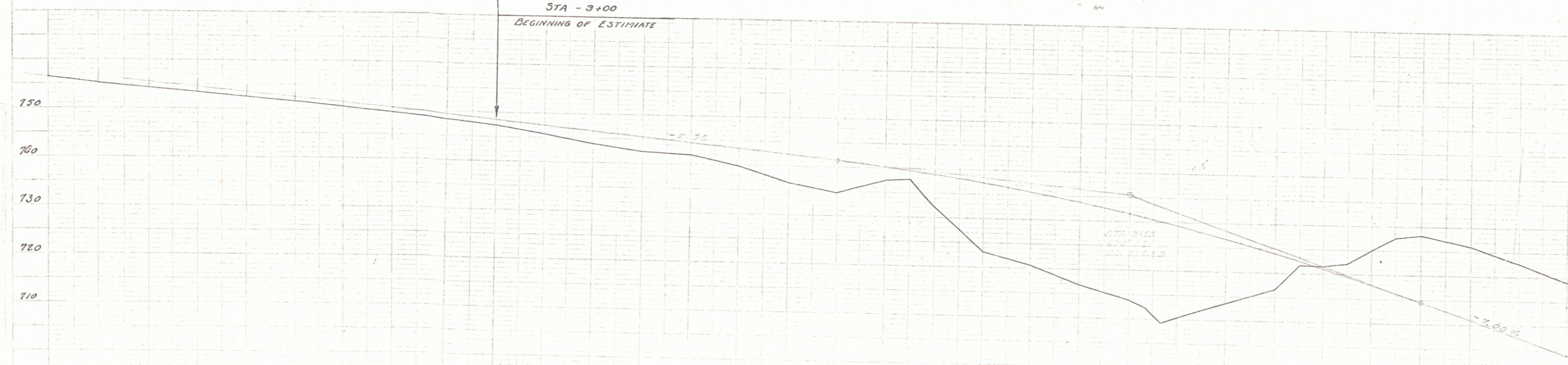
PROFILE
 1/4" = 10'
 1/8" = 10'



70	71	72	73	74	75	76	77	78	79	80	81	82	83	84	85	86
720.2	716.4	712.4	708.3	704.2	700.1	696.0	691.9	687.8	683.7	679.6	675.5	671.4	667.3	663.2	659.1	655.0
BM 7 18' ELM 14 FT LT STA 71+20 ELEV 713.06																BM 8 15' ELM 27 FT LT STA 81+24 ELEV 678.56



Δ 18°05' L
 D 3"
 R 1910.1
 T 304.0
 L 602.0
 C 24.0



746.7	752.1	756.1	758.3	758.5	761.6	760.5	769.3	768.3	767.3	746.50	745.7	747.50	743.8	746.50	742.6	745.50	741.9	744.50	738.8	743.50	736.7	742.50	735.8	741.50	737.7	740.40	737.8	734.77	735.1	734.08	733.1	737.56	729.7	735.83	716.8	733.90	715.8	741.85	722.2	720.4	724.90	721.5	726.83	724.66	724.66	721.5	722.50	721.68	722.1	718.2	725.9	747.70	727.8	718.24	728.1	714.50	725.9	711.00	722.7	701.30	715.0	704.00																																																									
-7+50	-7	+50	-6	150	-5	150	-2	150	-3	150	-2	150	-2	150	150	-1	-50	0	150	1	150	2	150	3	150	4	150	5	150	6	150	7	150	8	150	9	150	10	150	11	150	12	150	13	150	14	150	15	150	16	150	17	150	18	150	19	150	20	150	21	150	22	150	23	150	24	150	25	150	26	150	27	150	28	150	29	150	30	150	31	150	32	150	33	150	34	150	35	150	36	150	37	150	38	150	39	150	40	150	41	150	42	150	43	150	44	150	45	150	46	150	47	150	48	150	49	150	50	150

BM#1 Spike in Roof 6' Cherry 75 ft. el. Sta. - 2+50
 BM#1-A Spike in Roof 10' Elm. 35 ft. el. Sta. - 8+94
 VERMONT N.R.H. 70 E
 NEW HAMPSHIRE N.E. 24. 202 W
 SHEET 11

