

INDEX OF SHEETS

SHEET NO. 1	TITLE PAGE
" 2	TYPICAL CROSS-SECTION OF IMPROVEMENT (1/2" CRUSHED STONE MIXED IN PLACE SURFACE COURSE WITH CUT-BACK ASPHALT, ITEMS 27&31)
" 3-4	PLAN AND PROFILE
" 5	ST'D STRUCTURE SHEET S-28 PLAIN RUBBLE PAVING
" 6	ST'D STRUCTURE SHEET S-30 CABLE GUARD RAIL
" 7	ST'D STRUCTURE SHEET S-40 BARRICADES, SIGNS AND LIGHTS
" 8	ST'D STRUCTURE SHEET S-41 ROUNDING OF SLOPES
" 9-11	CROSS SECTIONS

STANDARD STRUCTURE SHEETS APPROVED BY THE CHIEF ENGINEER
 5-28 APRIL 26, 1941
 5-40 SEPT. 5, 1940
 5-30 AUG. 15, 1934

(To Be Returned To H.O.M. Division)
 FORM OF 4-18
 PERMIT
 TOWN FILE
 HIGHWAY DIVISION

02/15/40

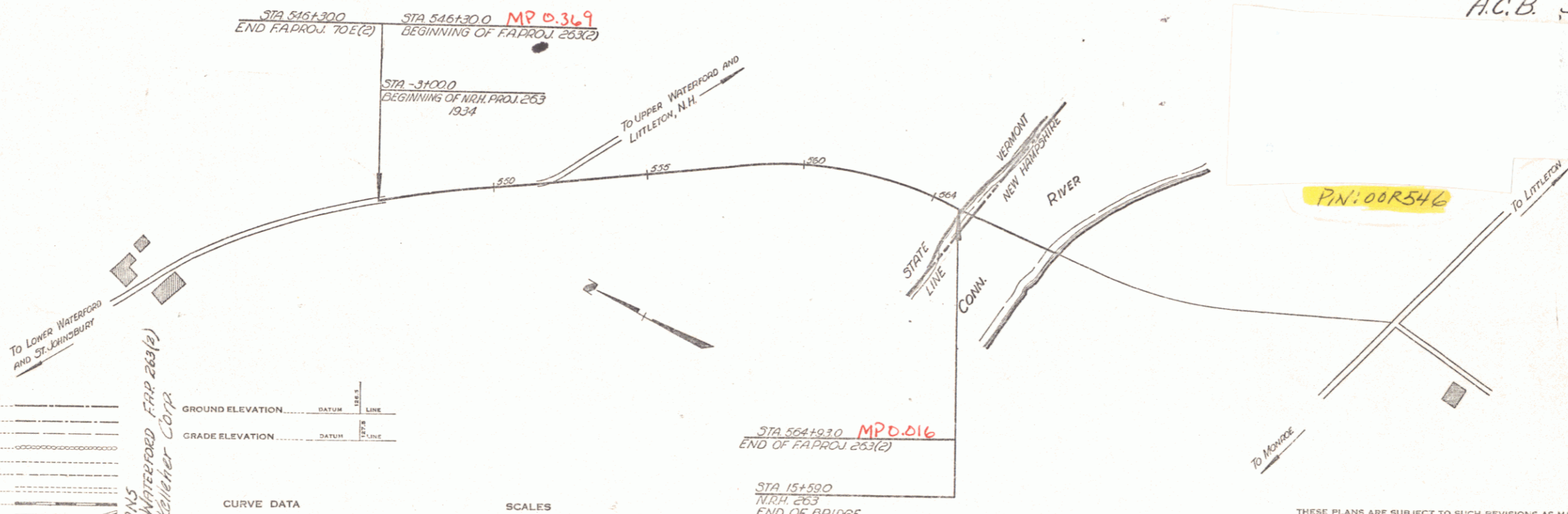
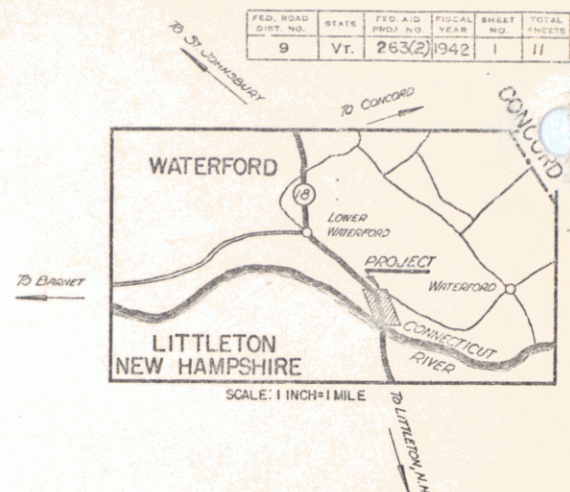
STATE OF VERMONT
 STATE HIGHWAY DEPARTMENT

PLAN AND PROFILE OF PROPOSED
 STATE HIGHWAY

TOWN OF WATERFORD

VERMONT ROUTE 18

ST. JOHNSBURY, VT.-LITTLETON, N.H. ROAD
 BEGINNING AT A POINT 1946 FEET NORTHWESTERLY OF THE VERMONT-NEW HAMPSHIRE STATE
 BOUNDARY AND EXTENDING SOUTHEASTERLY 1864 FEET
 LENGTH OF PROJECT: 1864 FEET=0.353 MILES



RECORD PLANS
 A.C.B. 51142



- COUNTY LINE
- TOWN LINE
- FENCE LINE
- STONE WALL
- UNFENCED PROPERTY
- GUARD RAIL
- TRAVELED WAY
- RAILROAD
- RETAINING WALL
- CENTER LINE
- SURVEY LINE
- CULVERT
- DROP INLET
- TROLLEY POLE
- POWER POLE
- TELEPHONE POLE
- TREES
- HEDGE

GROUND ELEVATION DATUM LINE
 GRADE ELEVATION DATUM LINE

CURVE DATA

DEFLECTION ANGLE	Δ
DEGREE OF CURVE	D
RADIUS OF CURVE	R
TANGENT DISTANCE	T
LENGTH OF CURVE	L
EXTERNAL DISTANCE	E
POINT OF INTERSECTION	P. I.
POINT OF CURVE	P. C.
POINT OF TANGENT	P. T.
POINT ON TANGENT	P. O. T.

SCALES

TITLE	1" = 200'
TYPICAL	1" = 2'
PLAN	1" = 50'
PROFILE HORIZONTAL	1" = 30'
PROFILE VERTICAL	1" = 10'
CROSS SECTIONS	1" = 25'

THESE PLANS ARE SUBJECT TO SUCH REVISIONS AS MAY BE REQUIRED BY THE PUBLIC ROADS ADMINISTRATION OR THE COMMISSIONER OF HIGHWAYS.

CONSTRUCTION IS TO BE CARRIED ON IN ACCORDANCE WITH THE PLANS AND THE STANDARD ROAD AND BRIDGE SPECIFICATIONS OF 1936, AS APPROVED DECEMBER 29TH, 1936 BY THE PUBLIC ROADS ADMINISTRATION, INCLUDING ALL SUBSEQUENT APPROVED REVISIONS AND SUCH REVISED SPECIFICATIONS AND SPECIAL PROVISIONS AS ARE SUBMITTED WITH THE PLANS.

APPROVED: July 2, 1941
 Commissioner of Highways

RECOMMENDED FOR APPROVAL

APPROVED

APPROVED: July 2, 1941
 ROAD ENGINEER

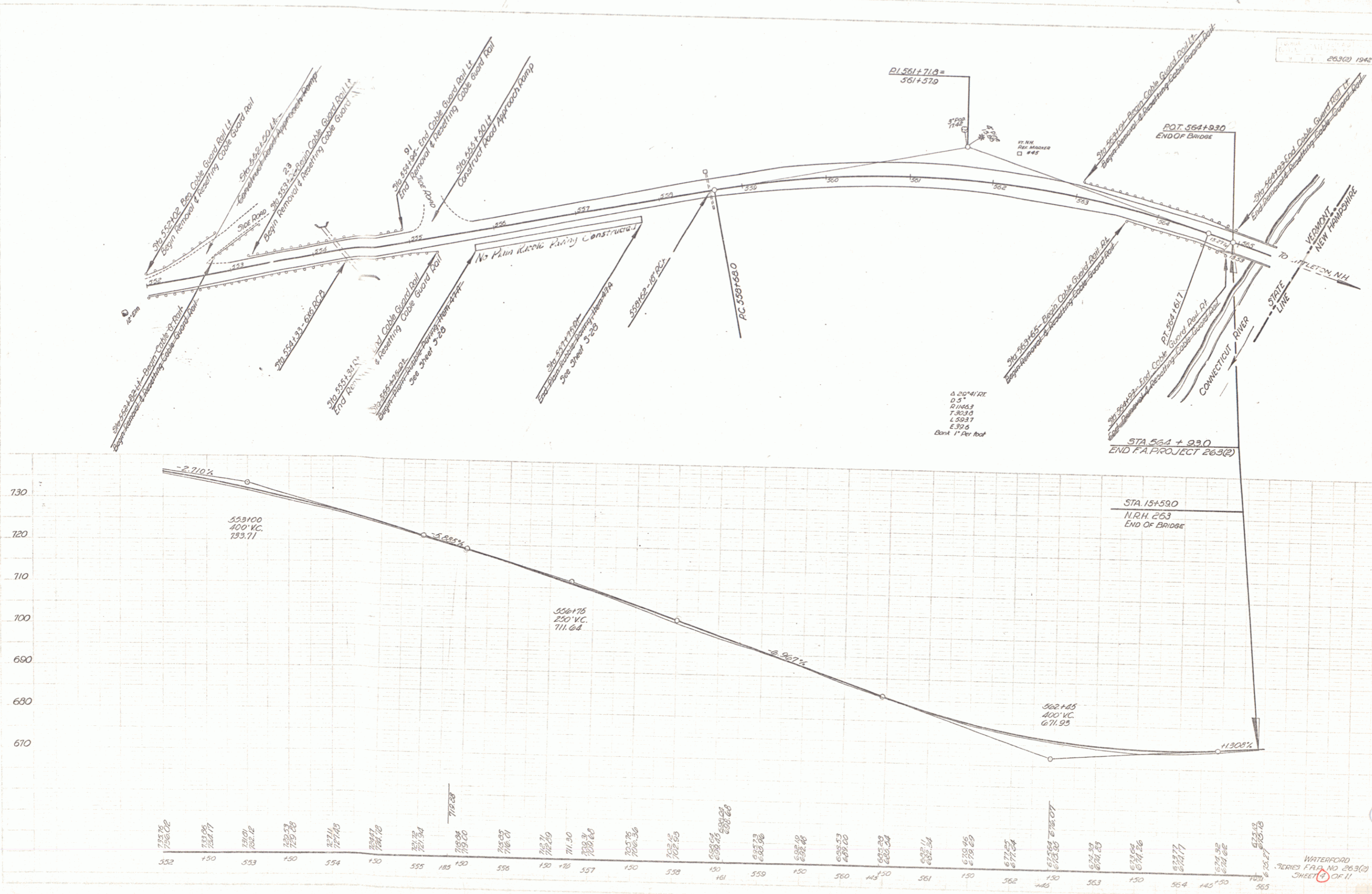
APPROVED: July 29, 1941
 DISTRICT HIGHWAY COMMISSIONER

SERIES FAP NO. 2632 FILED
 SHEET 1 OF 11

0157-11

3-4
6-4
Drawing
SUB
U.S.C.
RECORD

3-4
6-4
Drawing
U.S.C.



WATERFORD
SERIES F.A. NO. 263(2)
SHEET 11 OF 11