

Δ45°18'LI  
 D 48°  
 R 119.4  
 T 49.7  
 L 94.2

Δ36°39'LI  
 D 36°  
 R 159.2  
 T 52.7  
 L 101.8

Δ55°51'RT  
 D 30°  
 R 191.0  
 T 101.2  
 L 186.2

Δ145°30'RT  
 D 56°  
 R 102.3  
 T 329.5  
 L 259.8

Δ49°18'RT  
 D 6°  
 R 955.4  
 T 77.7  
 L 155.0

Δ17°25'RT  
 D 7°  
 R 819.0  
 T 125.4  
 L 248.8

Δ19°28'LI  
 D 12°  
 R 477.4  
 T 81.9  
 L 162.2

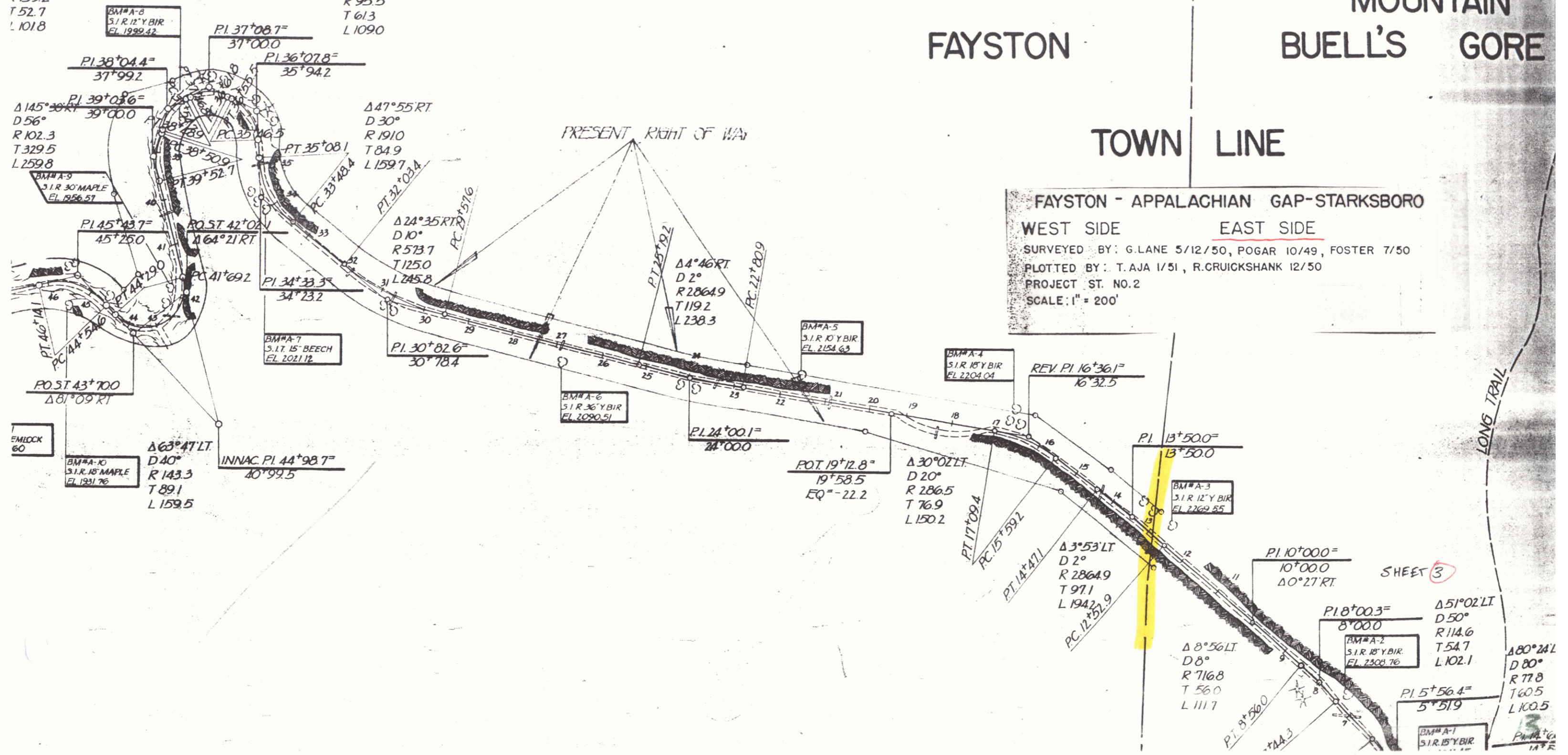
Δ63°41'LI  
 D 40°  
 R 143.3  
 T 89.1  
 L 159.5

**FAYSTON - APPALACHIAN GAP-STARKSBORO**  
**WEST SIDE EAST SIDE**  
 SURVEYED BY: G. LANE 5/12/50, POGAR 10/49, FOSTER 7/50  
 PLOTTED BY: T. AJA 1/51, R. CRUICKSHANK 12/50  
 PROJECT ST. NO. 2  
 SCALE: 1" = 200'

$\Delta 45^\circ 13' LT$	$\Delta 59^\circ 30' LT$
D 36°	D 70°
R 119.4	R 81.9
T 49.7	T 46.8
L 94.2	L 85.0

$\Delta 36^\circ 39' LT$   
D 36°  
R 159.2  
T 52.7  
L 101.8

$\Delta 65^\circ 24' LT$   
D 60°  
R 95.5  
T 61.3  
L 109.0



FAYSTON

EAST SIDE OF  
MOUNTAIN  
BUELL'S GORE

TOWN LINE

FAYSTON - APPALACHIAN GAP - STARKSBORO  
WEST SIDE      EAST SIDE  
SURVEYED BY: G. LANE 5/12/50, POGAR 10/49, FOSTER 7/50  
PLOTTED BY: T. AJA 1/51, R. CRICKSHANK 12/50  
PROJECT ST. NO. 2  
SCALE: 1" = 200'

EMLOCK 60

BM#A-10  
5.1 R. 15" MAPLE  
EL. 1831.76

$\Delta 63^\circ 47' LT$   
D 40°  
R 143.3  
T 89.1  
L 159.5

INNAC. PI. 44° 98.7°  
40° 99.5

POST 43° 700  
 $\Delta 81^\circ 09' RT$

$\Delta 145^\circ 36' RT$   
D 56°  
R 102.3  
T 329.5  
L 259.8

BM#A-9  
5.1 R. 30" MAPLE  
EL. 1926.97

PI. 38° 04.4°  
37° 99.2

PI. 37° 08.7°  
37° 00.0

PI. 36° 07.8°  
35° 94.2

PI. 39° 03.6°  
39° 00.0

PT. 39° 52.1°  
39° 52.1

POST 42° 02.1°  
42° 02.1

PI. 34° 33.3°  
34° 23.2

BM#A-7  
5.1 T. 15" BEECH  
EL. 2011.12

PI. 30° 02.6°  
30° 18.4

PI. 24° 00.1°  
24° 00.0

POT 19° 12.8°  
19° 58.5  
EQ° = -22.2

$\Delta 30^\circ 02' LT$   
D 20°  
R 286.5  
T 76.9  
L 150.2

PT. 17° 09.4°  
RC. 15° 59.2

PT. 14° 47.1°  
RC. 12° 51.9

$\Delta 3^\circ 53' LT$   
D 2°  
R 286.9  
T 97.1  
L 194.2

PI. 10° 00.0°  
10° 00.0  
 $\Delta 0^\circ 27' RT$

PI. 8° 56.0°  
8° 56.0

PI. 5° 56.4°  
5° 51.9

PI. 18° 00.3°  
18° 00.0

BM#A-2  
5.1 R. 18" Y. BIR.  
EL. 2308.76

PI. 13° 50.0°  
13° 50.0

REV. PI. 16° 36.1°  
16° 32.5

BM#A-4  
5.1 R. 18" Y. BIR.  
EL. 2204.04

BM#A-5  
5.1 R. 10" Y. BIR.  
EL. 2154.63

BM#A-6  
5.1 R. 36" Y. BIR.  
EL. 3090.51

BM#A-8  
5.1 R. 12" Y. BIR.  
EL. 1989.42

BM#A-1  
5.1 R. 15" Y. BIR.  
EL. 2308.76

BM#A-3  
5.1 R. 12" Y. BIR.  
EL. 2269.55

BM#A-10  
5.1 R. 15" MAPLE  
EL. 1831.76

EMLOCK 60

INNAC. PI. 44° 98.7°  
40° 99.5

POST 43° 700  
 $\Delta 81^\circ 09' RT$

$\Delta 145^\circ 36' RT$   
D 56°  
R 102.3  
T 329.5  
L 259.8

BM#A-9  
5.1 R. 30" MAPLE  
EL. 1926.97

PI. 38° 04.4°  
37° 99.2

PI. 37° 08.7°  
37° 00.0

PI. 36° 07.8°  
35° 94.2

PI. 39° 03.6°  
39° 00.0

PT. 39° 52.1°  
39° 52.1

POST 42° 02.1°  
42° 02.1

PI. 34° 33.3°  
34° 23.2

BM#A-7  
5.1 T. 15" BEECH  
EL. 2011.12

PI. 30° 02.6°  
30° 18.4

PI. 24° 00.1°  
24° 00.0

POT 19° 12.8°  
19° 58.5  
EQ° = -22.2

$\Delta 30^\circ 02' LT$   
D 20°  
R 286.5  
T 76.9  
L 150.2

PT. 17° 09.4°  
RC. 15° 59.2

PT. 14° 47.1°  
RC. 12° 51.9

$\Delta 3^\circ 53' LT$   
D 2°  
R 286.9  
T 97.1  
L 194.2

PI. 10° 00.0°  
10° 00.0  
 $\Delta 0^\circ 27' RT$

PI. 8° 56.0°  
8° 56.0

PI. 5° 56.4°  
5° 51.9

PI. 18° 00.3°  
18° 00.0

BM#A-2  
5.1 R. 18" Y. BIR.  
EL. 2308.76

PI. 13° 50.0°  
13° 50.0

REV. PI. 16° 36.1°  
16° 32.5

BM#A-4  
5.1 R. 18" Y. BIR.  
EL. 2204.04

BM#A-5  
5.1 R. 10" Y. BIR.  
EL. 2154.63

BM#A-6  
5.1 R. 36" Y. BIR.  
EL. 3090.51

BM#A-8  
5.1 R. 12" Y. BIR.  
EL. 1989.42

BM#A-1  
5.1 R. 15" Y. BIR.  
EL. 2308.76

BM#A-3  
5.1 R. 12" Y. BIR.  
EL. 2269.55

EMLOCK 60

INNAC. PI. 44° 98.7°  
40° 99.5

POST 43° 700  
 $\Delta 81^\circ 09' RT$

$\Delta 145^\circ 36' RT$   
D 56°  
R 102.3  
T 329.5  
L 259.8

BM#A-9  
5.1 R. 30" MAPLE  
EL. 1926.97

PI. 38° 04.4°  
37° 99.2

PI. 37° 08.7°  
37° 00.0

PI. 36° 07.8°  
35° 94.2

PI. 39° 03.6°  
39° 00.0

PT. 39° 52.1°  
39° 52.1

POST 42° 02.1°  
42° 02.1

PI. 34° 33.3°  
34° 23.2

BM#A-7  
5.1 T. 15" BEECH  
EL. 2011.12

PI. 30° 02.6°  
30° 18.4

PI. 24° 00.1°  
24° 00.0

POT 19° 12.8°  
19° 58.5  
EQ° = -22.2

$\Delta 30^\circ 02' LT$   
D 20°  
R 286.5  
T 76.9  
L 150.2

PT. 17° 09.4°  
RC. 15° 59.2

PT. 14° 47.1°  
RC. 12° 51.9

$\Delta 3^\circ 53' LT$   
D 2°  
R 286.9  
T 97.1  
L 194.2

PI. 10° 00.0°  
10° 00.0  
 $\Delta 0^\circ 27' RT$

PI. 8° 56.0°  
8° 56.0

PI. 5° 56.4°  
5° 51.9

PI. 18° 00.3°  
18° 00.0

BM#A-2  
5.1 R. 18" Y. BIR.  
EL. 2308.76

PI. 13° 50.0°  
13° 50.0

REV. PI. 16° 36.1°  
16° 32.5

BM#A-4  
5.1 R. 18" Y. BIR.  
EL. 2204.04

BM#A-5  
5.1 R. 10" Y. BIR.  
EL. 2154.63

BM#A-6  
5.1 R. 36" Y. BIR.  
EL. 3090.51

BM#A-8  
5.1 R. 12" Y. BIR.  
EL. 1989.42

BM#A-1  
5.1 R. 15" Y. BIR.  
EL. 2308.76

BM#A-3  
5.1 R. 12" Y. BIR.  
EL. 2269.55

EMLOCK 60

INNAC. PI. 44° 98.7°  
40° 99.5

POST 43° 700  
 $\Delta 81^\circ 09' RT$

$\Delta 145^\circ 36' RT$   
D 56°  
R 102.3  
T 329.5  
L 259.8

BM#A-9  
5.1 R. 30" MAPLE  
EL. 1926.97

PI. 38° 04.4°  
37° 99.2

PI. 37° 08.7°  
37° 00.0

PI. 36° 07.8°  
35° 94.2

PI. 39° 03.6°  
39° 00.0

PT. 39° 52.1°  
39° 52.1

POST 42° 02.1°  
42° 02.1

PI. 34° 33.3°  
34° 23.2

BM#A-7  
5.1 T. 15" BEECH  
EL. 2011.12

PI. 30° 02.6°  
30° 18.4

PI. 24° 00.1°  
24° 00.0

POT 19° 12.8°  
19° 58.5  
EQ° = -22.2

$\Delta 30^\circ 02' LT$   
D 20°  
R 286.5  
T 76.9  
L 150.2

PT. 17° 09.4°  
RC. 15° 59.2

PT. 14° 47.1°  
RC. 12° 51.9

$\Delta 3^\circ 53' LT$   
D 2°  
R 286.9  
T 97.1  
L 194.2

PI. 10° 00.0°  
10° 00.0  
 $\Delta 0^\circ 27' RT$

PI. 8° 56.0°  
8° 56.0

PI. 5° 56.4°  
5° 51.9

PI. 18° 00.3°  
18° 00.0

BM#A-2  
5.1 R. 18" Y. BIR.  
EL. 2308.76

PI. 13° 50.0°  
13° 50.0

REV. PI. 16° 36.1°  
16° 32.5

BM#A-4  
5.1 R. 18" Y. BIR.  
EL. 2204.04

BM#A-5  
5.1 R. 10" Y. BIR.  
EL. 2154.63

BM#A-6  
5.1 R. 36" Y. BIR.  
EL. 3090.51

BM#A-8  
5.1 R. 12" Y. BIR.  
EL. 1989.42

BM#A-1  
5.1 R. 15" Y. BIR.  
EL. 2308.76

BM#A-3  
5.1 R. 12" Y. BIR.  
EL. 2269.55

EMLOCK 60

INNAC. PI. 44° 98.7°  
40° 99.5

POST 43° 700  
 $\Delta 81^\circ 09' RT$

$\Delta 145^\circ 36' RT$   
D 56°  
R 102.3  
T 329.5  
L 259.8

BM#A-9  
5.1 R. 30" MAPLE  
EL. 1926.97

PI. 38° 04.4°  
37° 99.2

PI. 37° 08.7°  
37° 00.0

PI. 36° 07.8°  
35° 94.2

PI. 39° 03.6°  
39° 00.0

PT. 39° 52.1°  
39° 52.1

POST 42° 02.1°  
42° 02.1

PI. 34° 33.3°  
34° 23.2

BM#A-7  
5.1 T. 15" BEECH  
EL. 2011.12

PI. 30° 02.6°  
30° 18.4

PI. 24° 00.1°  
24° 00.0

POT 19° 12.8°  
19° 58.5  
EQ° = -22.2

$\Delta 30^\circ 02' LT$   
D 20°  
R 286.5  
T 76.9  
L 150.2

PT. 17° 09.4°  
RC. 15° 59.2

PT. 14° 47.1°  
RC. 12° 51.9

$\Delta 3^\circ 53' LT$   
D 2°  
R 286.9  
T 97.1  
L 194.2

PI. 10° 00.0°  
10° 00.0  
 $\Delta 0^\circ 27' RT$

PI. 8° 56.0°  
8° 56.0

PI. 5° 56.4°  
5° 51.9

PI. 18° 00.3°  
18° 00.0

BM#A-2  
5.1 R. 18" Y. BIR.  
EL. 2308.76

PI. 13° 50.0°  
13° 50.0

REV. PI. 16° 36.1°  
16° 32.5

BM#A-4  
5.1 R. 18" Y. BIR.  
EL. 2204.04

BM#A-5  
5.1 R. 10" Y. BIR.  
EL. 2154.63

BM#A-6  
5.1 R. 36" Y. BIR.  
EL. 3090.51

BM#A-8  
5.1 R. 12" Y. BIR.  
EL. 1989.42

BM#A-1  
5.1 R. 15" Y. BIR.  
EL. 2308.76

BM#A-3  
5.1 R. 12" Y. BIR.  
EL. 2269.55

EMLOCK 60

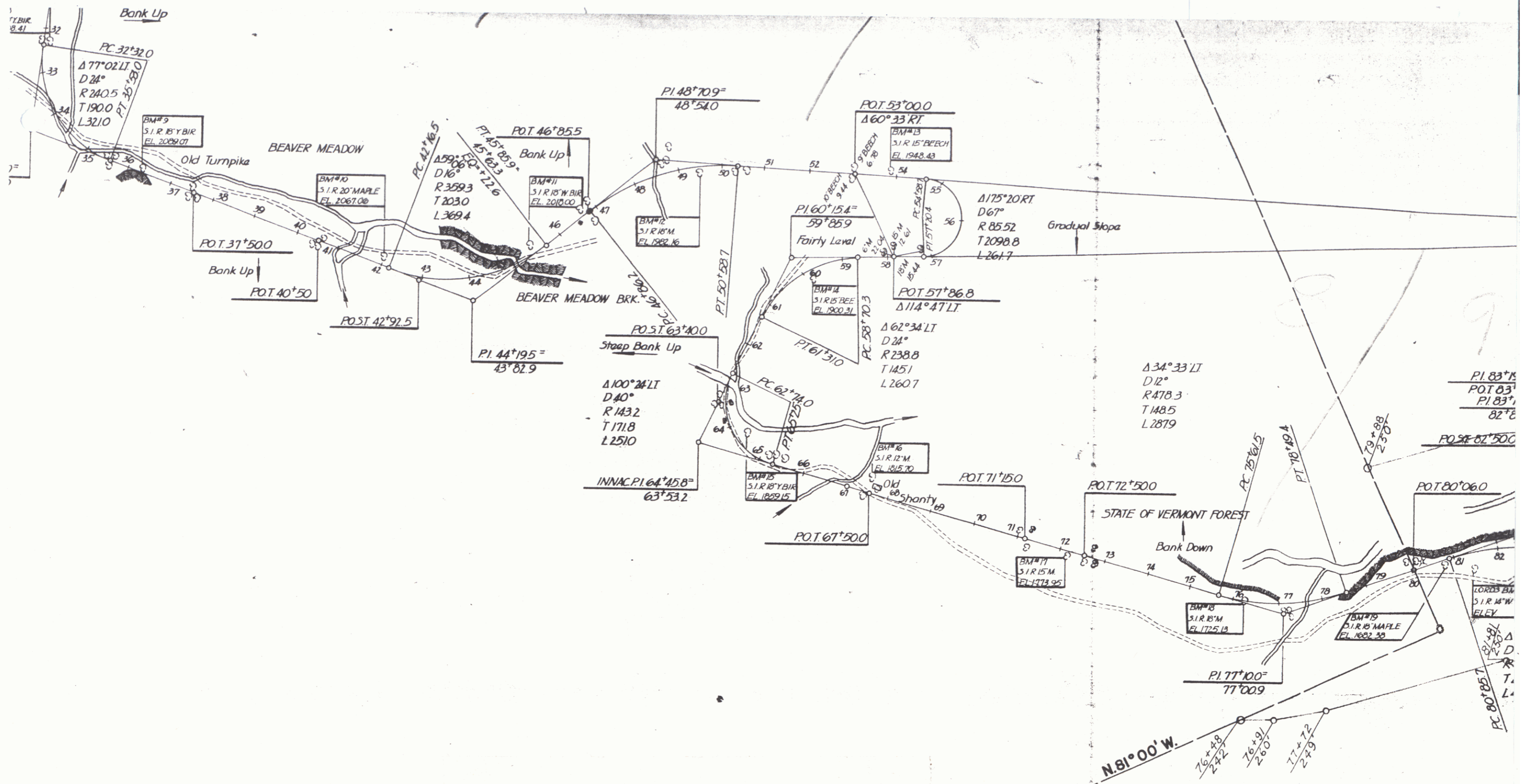
INNAC. PI. 44° 98.7°  
40° 99.5

POST 43° 700  
 $\Delta 81^\circ 09' RT$

$\Delta 145^\circ 36' RT$   
D 56°  
R 102.3  
T 329.5  
L 259.8

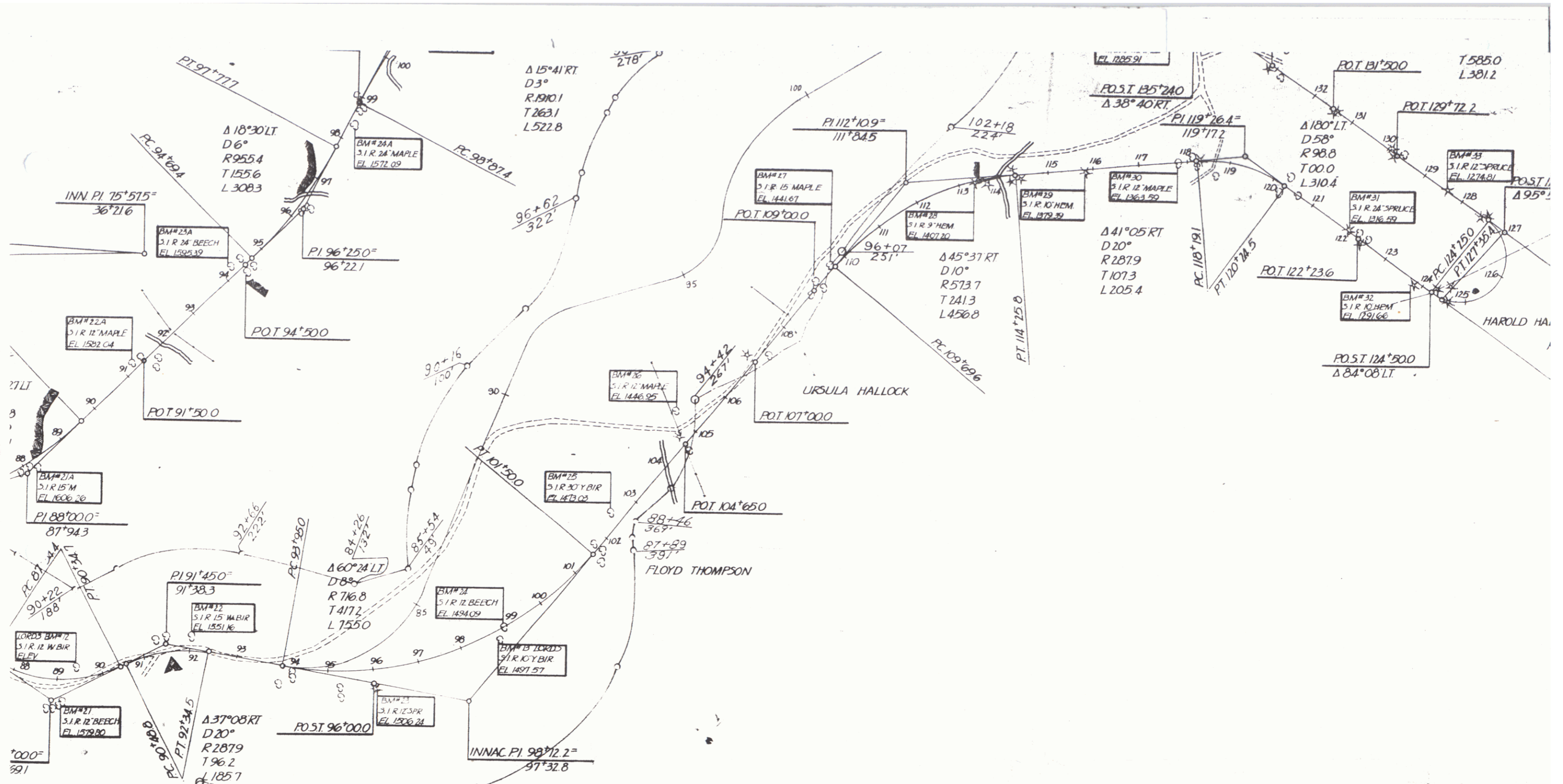
BM#A-9  
5.1 R.





**FAYSTON - APPALACHIAN GAP - STARKSBORO**  
**WEST SIDE                      EAST SIDE**  
 SURVEYED BY: G. LANE 5/12/50, POGAR 10/49, FOSTER 7/50  
 PLOTTED BY: T. AJA 1/51, R. CRUICKSHANK 12/50  
 PROJECT ST. NO. 2  
 SCALE: 1" = 200'





**FAYSTON - APPALACHIAN GAP - STARKSBORO**  
**WEST SIDE                      EAST SIDE**  
 SURVEYED BY: G. LANE 5/12/50, POGAR 10/49, FOSTER 7/50  
 PLOTTED BY: T. AJA 1/51, R. CRUICKSHANK 12/50  
 PROJECT ST. NO. 2  
 SCALE: 1" = 200'



LOCATION

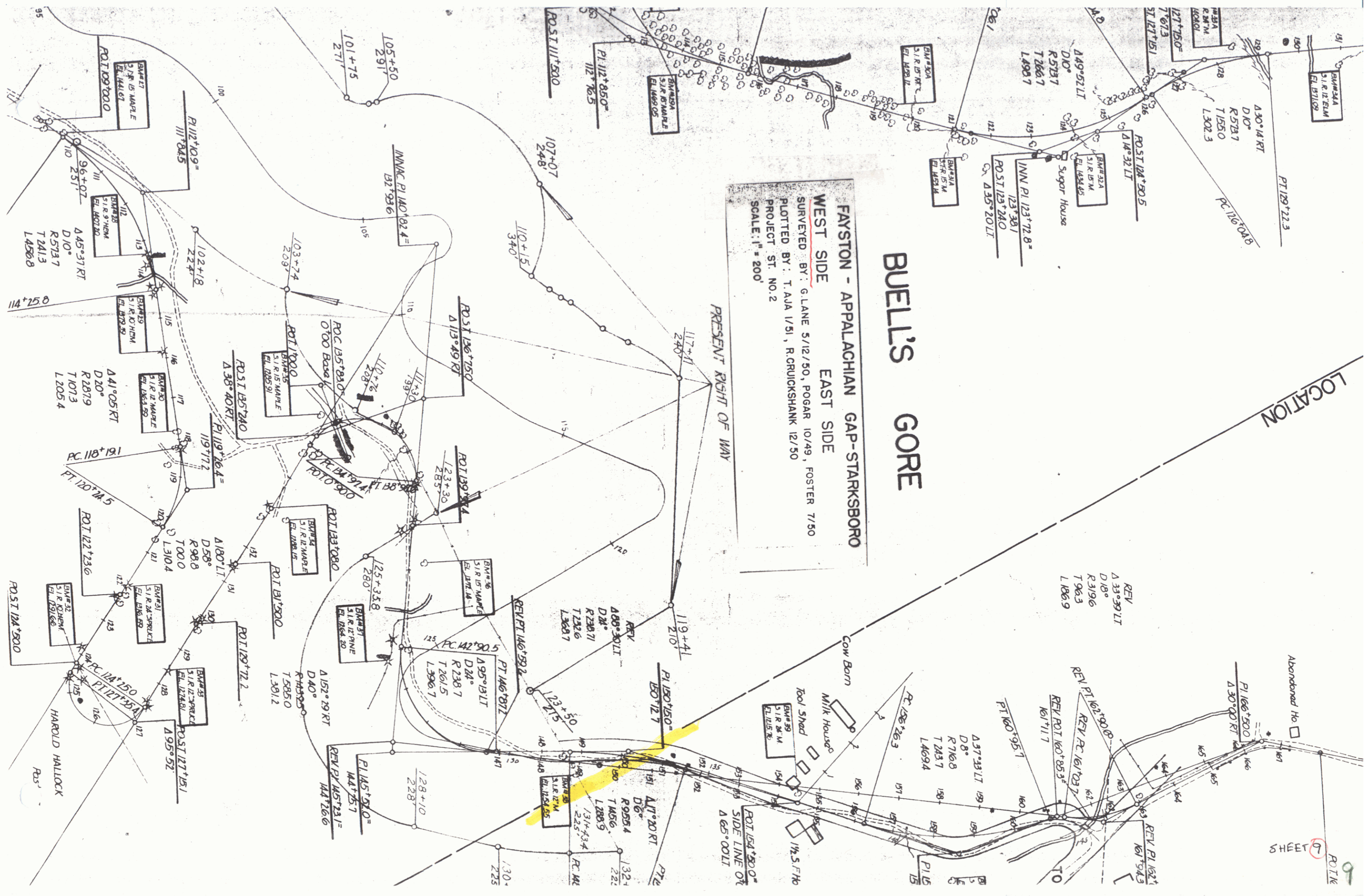
ROUTE 9  
SHEET 9

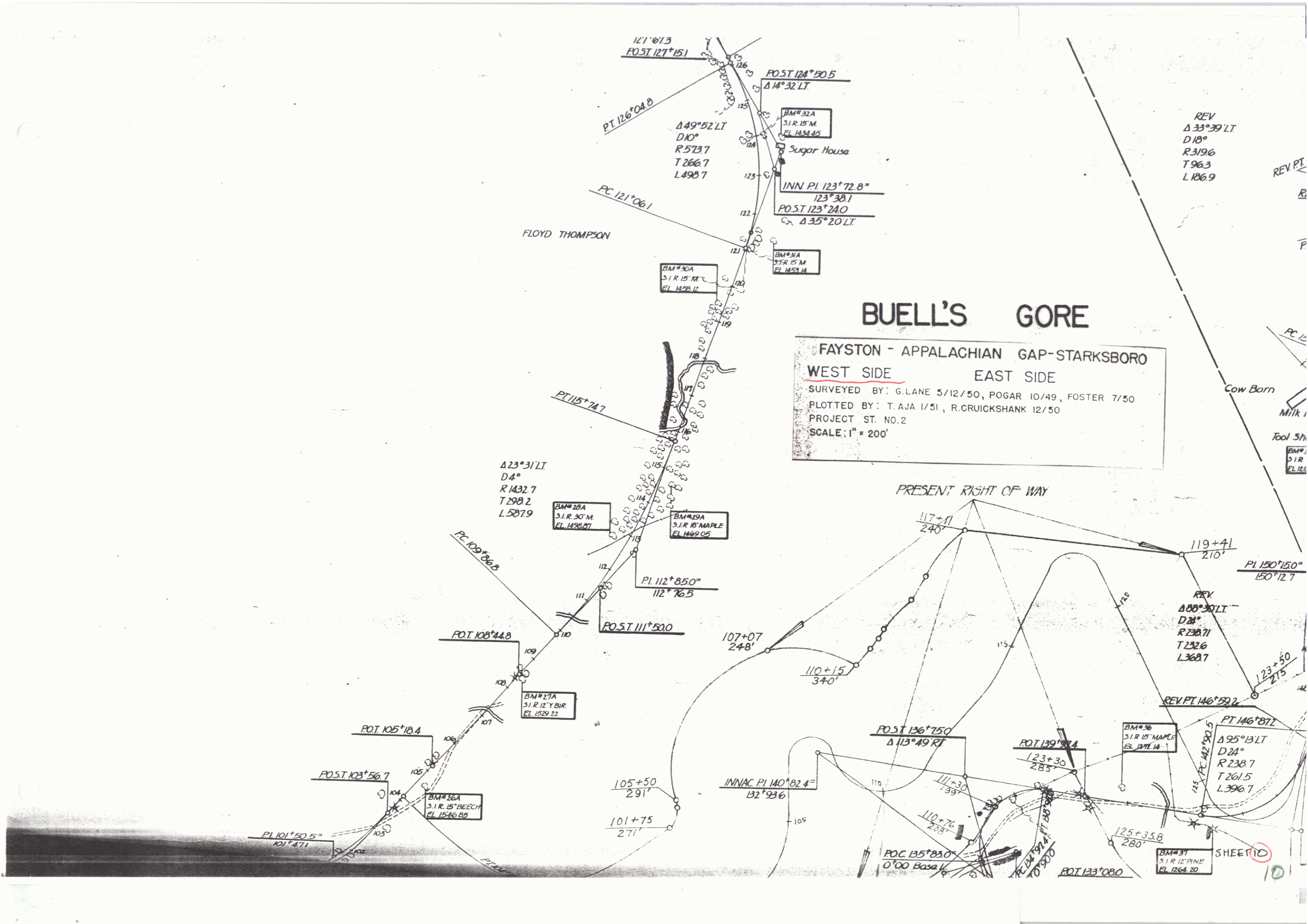
# BUELL'S GORE

FAVSTON - APPALACHIAN GAP-STARKSBORO  
WEST SIDE EAST SIDE

SURVEYED BY: G. LANE 5/12/50, POGAR 10/49, FOSTER 7/50  
PLOTTED BY: T. ADA 1/51, R. CRUICKSHANK 12/50  
PROJECT ST. NO. 2  
SCALE: 1" = 200'

PRESENT RIGHT OF WAY





# BUELL'S GORE

FAYSTON - APPALACHIAN GAP - STARKSBORO  
 WEST SIDE EAST SIDE  
 SURVEYED BY: G. LANE 5/12/50, POGAR 10/49, FOSTER 7/50  
 PLOTTED BY: T. AJA 1/51, R. CRUICKSHANK 12/50  
 PROJECT ST. NO. 2  
 SCALE: 1" = 200'

REV  
 $\Delta 33^{\circ}39'LT$   
 $D 18^{\circ}$   
 $R 319.6$   
 $T 96.3$   
 $L 186.9$

PRESENT RIGHT OF WAY

REV  
 $\Delta 88^{\circ}30'LT$   
 $D 24^{\circ}$   
 $R 238.71$   
 $T 232.6$   
 $L 368.7$

REV  
 $\Delta 25^{\circ}13'LT$   
 $D 24^{\circ}$   
 $R 238.7$   
 $T 261.5$   
 $L 396.7$

SHEET 10

FLOYD THOMPSON

Cow Barn  
 Milk  
 Tool Sh  
 BM#  
 S 1 R  
 EL 122

PT 126+04.8  
 POST 127+15.1

POST 124+50.5  
 $\Delta 14^{\circ}32'LT$

$\Delta 49^{\circ}52'LT$   
 $D 10^{\circ}$   
 $R 573.7$   
 $T 266.7$   
 $L 498.7$

BM# 32A  
 S 1 R 15' M  
 EL 1434.45

Sugar House

INN. PI 123+72.8"

POST 123+24.0

$\Delta 35^{\circ}20'LT$

BM# 30A  
 S 1 R 15' M  
 EL 1428.12

BM# 31A  
 S 1 R 15' M  
 EL 1452.14

$\Delta 23^{\circ}31'LT$   
 $D 4^{\circ}$   
 $R 1432.7$   
 $T 298.2$   
 $L 587.9$

BM# 28A  
 S 1 R 30' M  
 EL 1478.07

BM# 29A  
 S 1 R 15' MAPLE  
 EL 1469.05

PC 108+04.8

POST 111+50.0

107+07  
 248'

110+15  
 340'

PI 150+150"  
 150+12.7

REV PT 146+50.2

PT 146+87.2

POST 108+44.8

BM# 27A  
 S 1 R 12' Y. BUR.  
 EL 1529.22

POST 105+18.4

POST 103+56.7

BM# 26A  
 S 1 R 15' BEECH  
 EL 1546.85

PI 101+50.5"  
 101+47.1

105+50  
 291'

101+75  
 271'

INNAC PI 140+82.4"  
 132+92.6

POST 136+75.0  
 $\Delta 113^{\circ}49'RT$

POST 139+87.4

BM# 26  
 S 1 R 15' MAPLE  
 EL 1472.14

POC 135+82.0"  
 0+00 Base

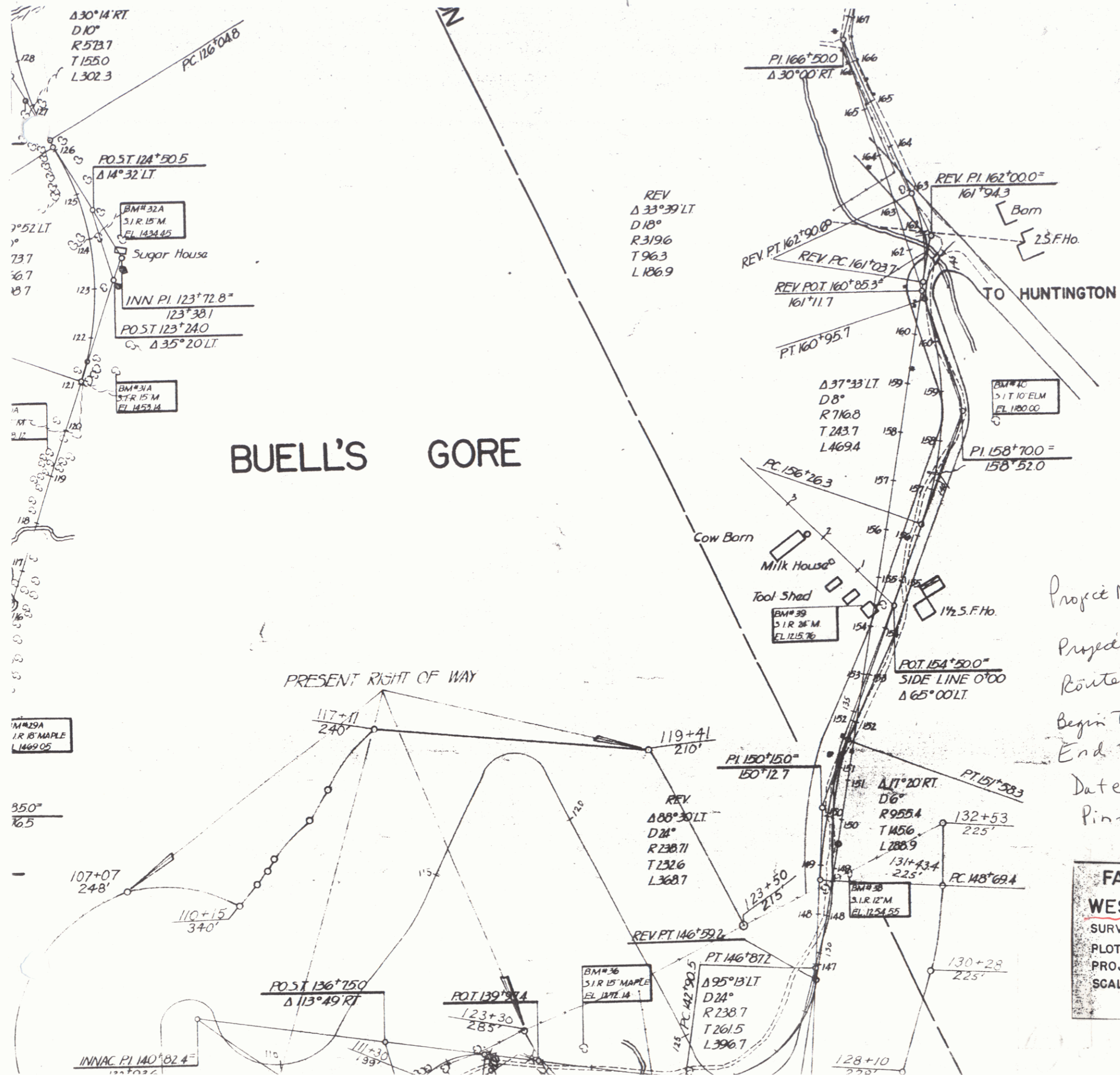
123+30  
 285'

110+76  
 258'

125+35.8  
 280'

POST 133+08.0

BM# 37  
 S 1 R 12' PINE  
 EL 1264.22



**BUELL'S GORE**

Project Name: Fayston-Buell's Gore  
 Starksboro  
 Project No: Survey  
 Route Vt. 17  
 Begin Town: Fayston  
 End Town: Starksboro  
 Date: 05/12/1950  
 Pin #

FAYSTON - APPALACHIAN GAP - STARKSBORO	
WEST SIDE	EAST SIDE
SURVEYED BY: G. LANE 5/12/50, POGAR 10/49, FOSTER 7/50	
PLOTTED BY: T. AJA 1/51, R. GRUICKSHANK 12/50	
PROJECT ST. NO. 2	
SCALE: 1" = 200'	

