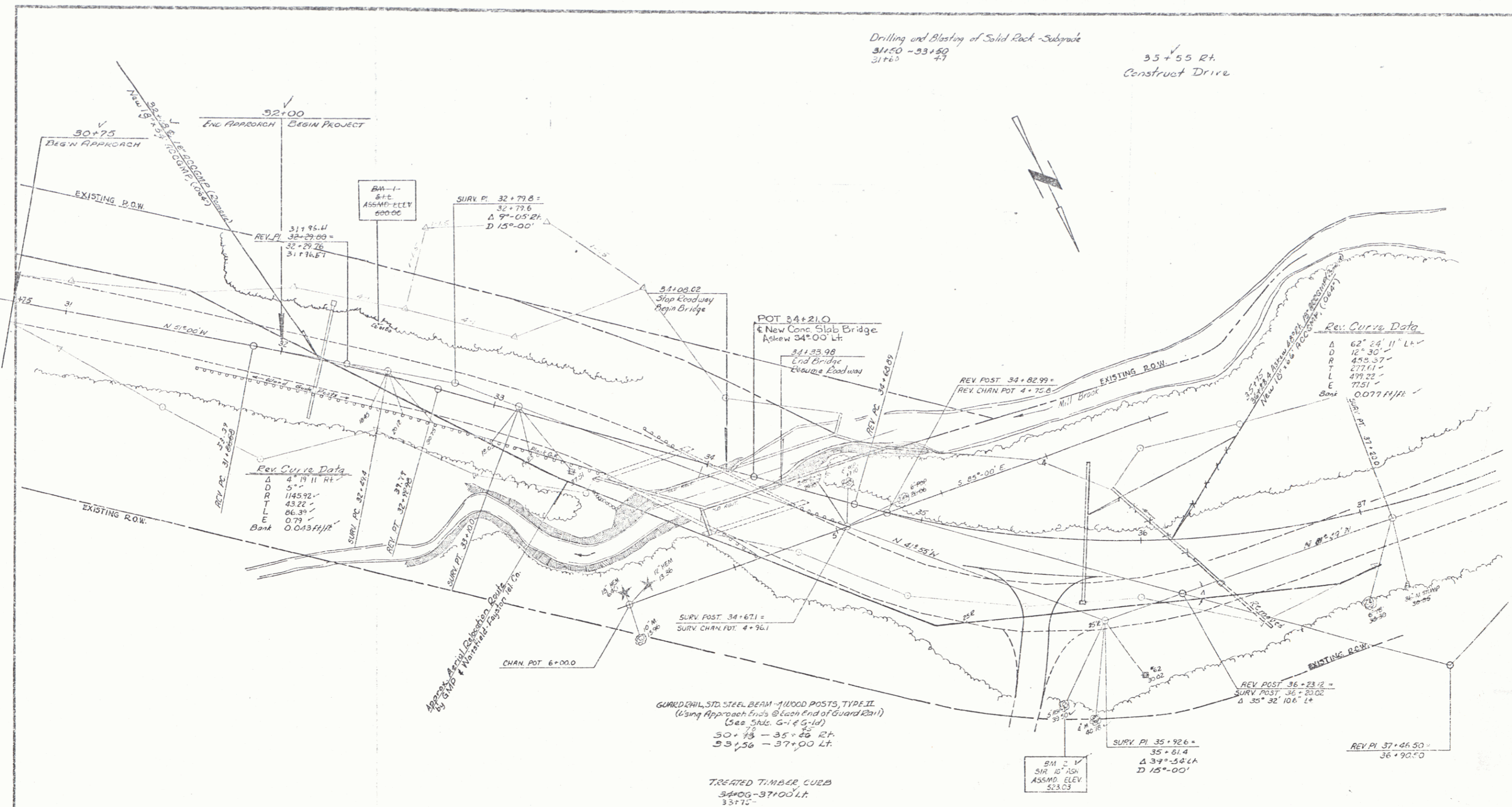


Drilling and Blasting of Solid Rock - Subgrade  
 31+50 - 33+50  
 31+60 47

35+55 R/L  
 Construct Drive



Rev. Curve Data

Δ	4° 18' 11" Rt
D	5'-"
R	1145.92'
T	43.22'
L	86.39'
E	0.79'
Bank	0.0437 ft/ft

Rev. Curve Data

Δ	62° 24' 11" Lt
D	12' 30"
R	455.37'
T	273.01'
L	479.22'
E	77.51'
Bank	0.0777 ft/ft

GUARD RAIL, STD. STEEL BEAM - 4 WOOD POSTS, TYPE II  
 (Using Approach Ends @ Each End of Guard Rail)  
 (See Specs. S-14, S-15)  
 30+75 - 35+25 R/L  
 53+56 - 37+00 L/L

TREATED TIMBER CURB  
 34+00 - 37+00 L/L  
 33+75 -

AUG 13 1980

SURVEYED BY: FAYSTON DATE: MAY 77  
 DRAWN BY: DATE: 7/80  
 TRACED BY: DATE: 7/80

FAYSTON  
 PROJ. NOS. 0200(5)  
 SHEET 6 OF 8