

INDEX OF SHEETS

SHEET NO. 1 TITLE PAGE
 2 TYPICAL CROSS-SECTION OF IMPROVEMENT PAVEMENT COURSE ITEM 301
 3 BANKING AND WIDENING TABLES
 4 QUANTITY SHEET (ITEMS)
 5 QUANTITY SHEET (DRAINAGE)
 6-8 EARTHWORK SHEETS
 9 CONSTRUCTION DETAILS CD (DRAINAGE AND MARKERS)
 10 CONSTRUCTION DETAILS CD-1 (DITCHES)
 11 STANDARD STRUCTURE SHEET S-40 (BARRICADES, SIGNS AND LIGHTS)
 12 STANDARD STRUCTURE SHEET S-45-45 (1) (CABLE GUARD RAIL & FLARE GUARD RAIL)
 13-18 PLAN AND PROFILE SHEETS
 19-23 CROSS SECTIONS

STANDARD STRUCTURE SHEET APPROVED BY THE CHIEF ENGINEER, VERMONT STATE DEPARTMENT OF HIGHWAYS...
 S-40 JUNE 10, 1950

Project Name & Number	Type
Buel's Gore - Fayston, ST 2-Ext. East	Gravel Service Course
RECORD PLANS	
MATERIALS	
Gravel - 1/2" max. size (Washburn) 1 1/2" (6M) - 1/2" max. size (Washburn) 1 1/2" (6M) - 1/2" max. size (Washburn)	
Contractors: <i>W. H. H. H. Co.</i>	Contract Dates: August 4, 1955
Plans: <i>W. H. H. H. Co.</i>	Contract Dates: August 15, 1955
Specs: <i>W. H. H. H. Co.</i>	Contract Dates: August 20, 1955

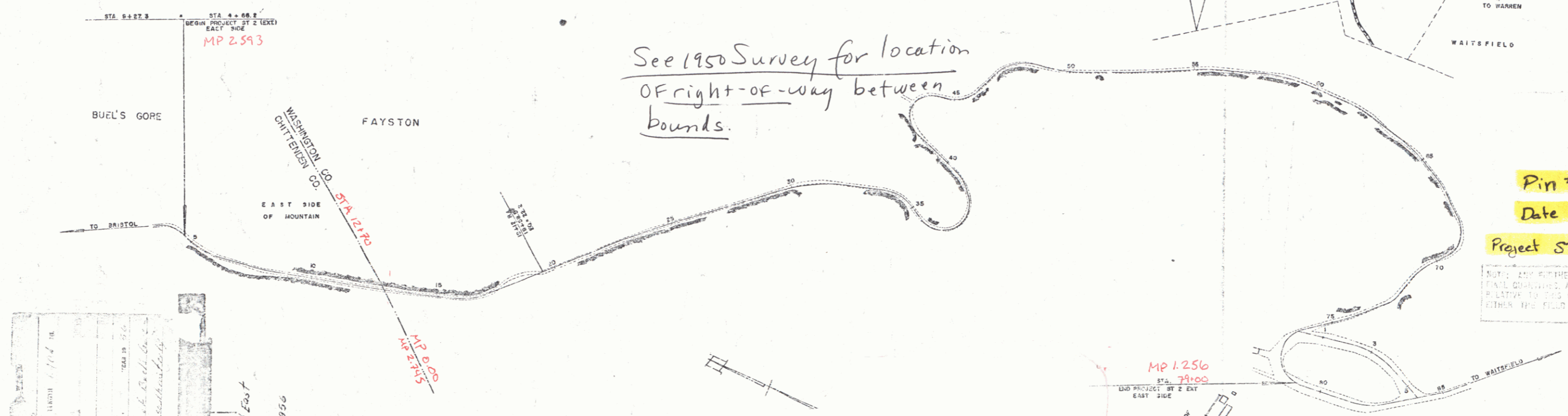
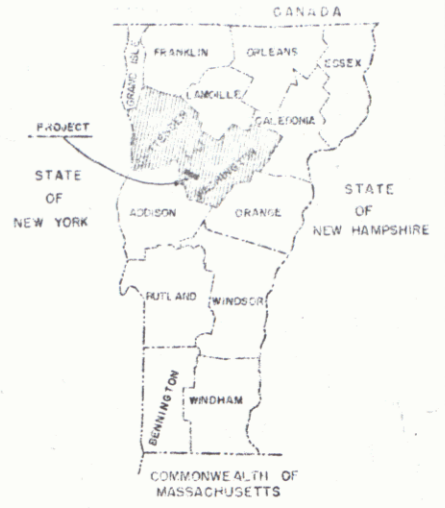
STATE OF VERMONT
 DEPARTMENT OF HIGHWAYS
PROPOSED IMPROVEMENT

STATE PROJECT
TOWNS OF BUEL'S GORE-FAYSTON
 A. MC CULLOUGH HIGHWAY
 APPALACHIAN GAP
 COUNTIES OF CHITTENDEN-WASHINGTON

BEGINNING AT A POINT 803.3 FEET WESTERLY OF THE CHITTENDEN-WASHINGTON COUNTY LINE (BUEL'S GORE-FAYSTON TOWN LINE) AND EXTENDING SOUTHEASTERLY 7,411.6 FEET

LENGTH OF PROJECT 7,411.6 FEET = 14.04 MILES

SEC. ROAD	STATE	LOCAL	TOTAL
1	1	1	2



APPROVED: *[Signature]*
 DISTRICT ENGINEER
 DATE: *6/15/55*

BUEL'S GORE-FAYSTON STREET EAST
 CONSTRUCTION COMPLETED ROAD TO 1956

GROUND ELEVATION	DATUM	UNIT
GRADE ELEVATION	DATUM	FEET

SCALES	
TITLE	1" = 300'
TYPICAL	1" = 20'
PLAN	1" = 50'
PROFILE VERTICAL	1" = 10'
CROSS-SECTIONS	1" = 5'

APPROVED	APPROVED	APPROVED	APPROVED
<i>[Signature]</i>	<i>[Signature]</i>	<i>[Signature]</i>	<i>[Signature]</i>
DATE: <i>6/15/55</i>	DATE: <i>6/15/55</i>	DATE: <i>6/15/55</i>	DATE: <i>6/15/55</i>

DEPARTMENT OF COMMERCE BUREAU OF PUBLIC ROADS	
RECOMMENDED FOR APPROVAL	DATE
DISTRICT ENGINEER	DATE
APPROVED	DATE
DIVISION CHIEF	DATE

Pin # 00R542
 Date 6/15/1955
 Project ST 2-Ext-East

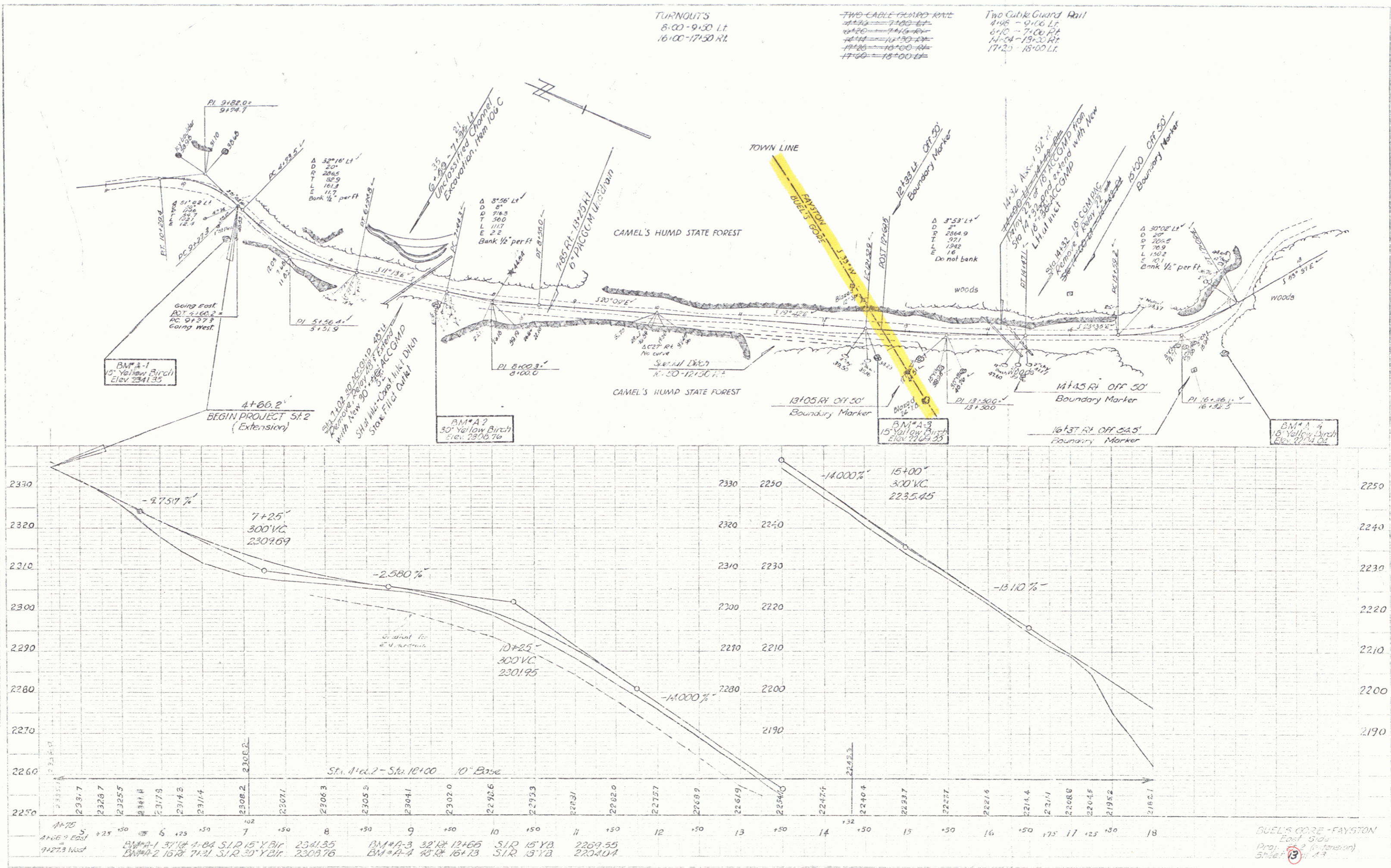
NOTE: ANY FURTHER INFORMATION CONCERNING THIS PROJECT SHOULD BE OBTAINED FROM THE DISTRICT ENGINEER OR THE DIVISION CHIEF. EITHER THE FIELD BOOKS OR THE ESTIMATE FILE.

THESE PLANS ARE SUBJECT TO SUCH REVISIONS AS MAY BE REQUIRED BY THE BUREAU OF PUBLIC ROADS OR THE COMMISSIONER OF HIGHWAYS.

CONSTRUCTION IS TO BE CARRIED ON IN ACCORDANCE WITH THE PLANS AND THE STANDARD ROAD AND BRIDGE SPECIFICATIONS OF 1948, AS APPROVED JULY 22, 1949 BY THE BUREAU OF PUBLIC ROADS, INCLUDING ALL SUBSEQUENT APPROVED REVISIONS AND SUCH REVISED SPECIFICATIONS AND SPECIAL PROVISIONS AS ARE SUBMITTED WITH THE PLANS.

AUG 18 1980

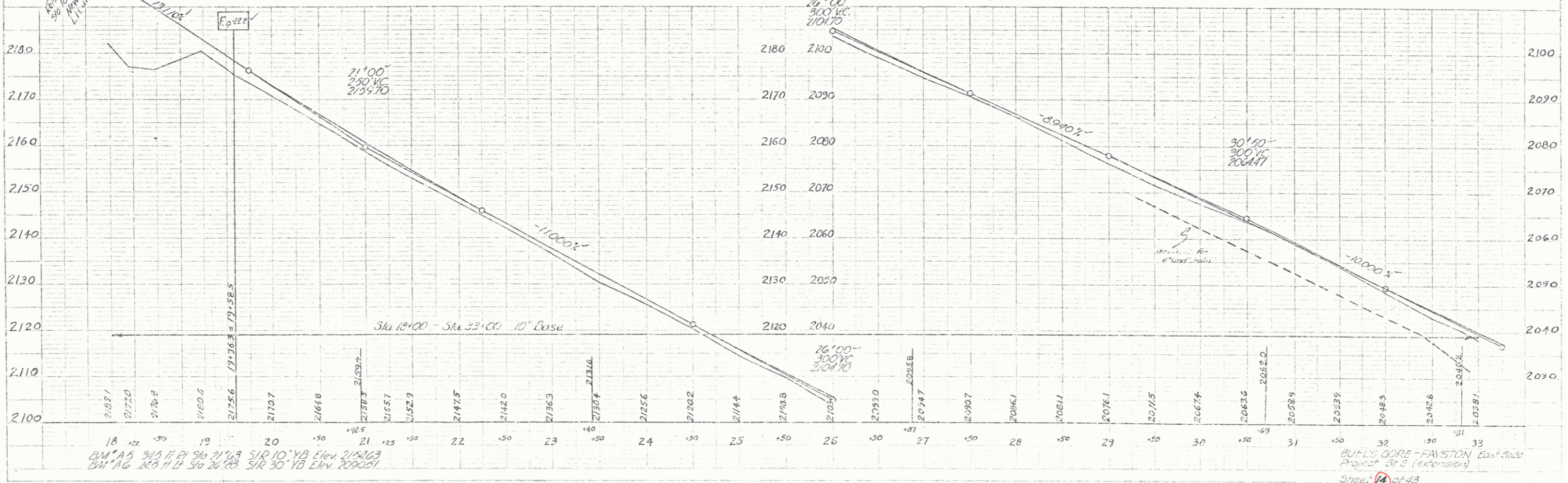
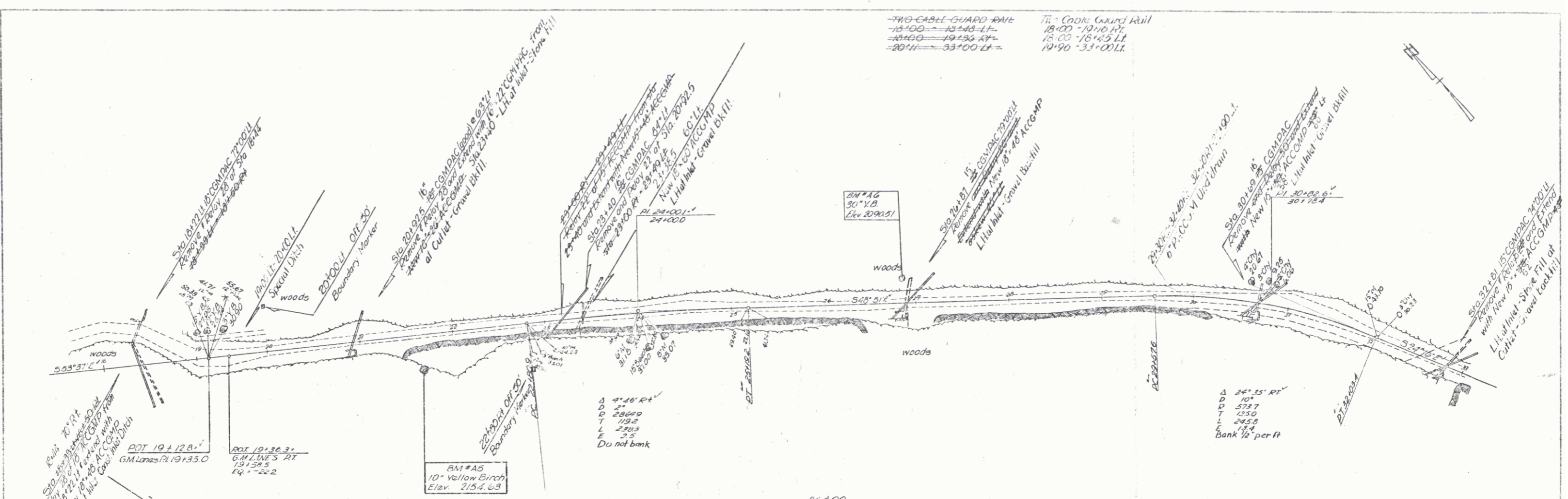
PLAN
 DATE
 DRAWN BY
 CHECKED BY
 TITLE
 PROJECT



GUEL'S CORP - FAYSTON
 Proj. Eng. (Faystons)
 Sheet 13 of 23

AUG 18 1980Z

PLAN
 BY: B. J. BOSTER
 DATE: 12-89
 PROJECT: BULLS GORE - FAYSTON
 SHEET: 14 OF 43



BM # A5 345 11 ft Sta 21+00 SIR 10' YB Elev. 2154.63
 BM # A6 245 11 ft Sta 26+00 SIR 30' YB Elev. 2090.51

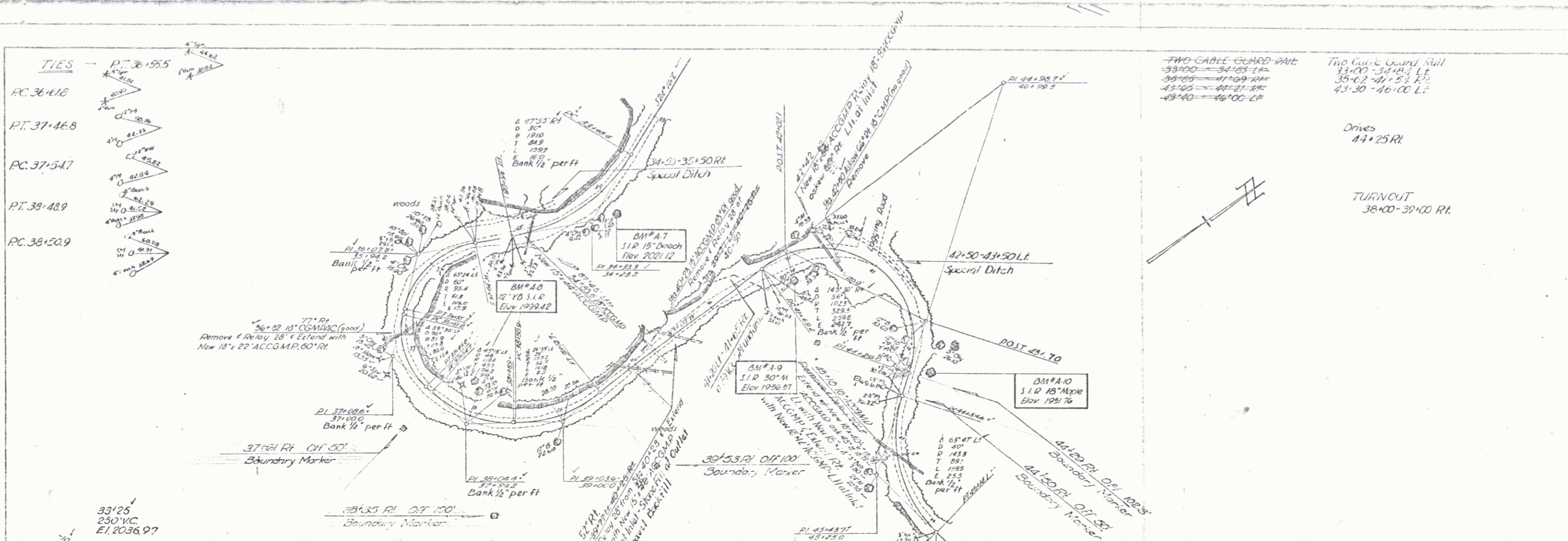
BULLS GORE - FAYSTON East Side
 Project # 2 (extension)
 Sheet 14 of 43

AUG 18 1980

3

PLAN
 PROJECT: 3 FOSTER
 DRAWING: 15
 DATE: 11-89
 BY: A.J.M.
 CHECKED: A.J.M.
 SCALE: AS SHOWN
 NORTH: AS SHOWN
 STRUCTURE: NOT TO SCALE

TIES
 PC 36+18
 PT 37+46.8
 PC 37+54.7
 PT 39+48.9
 PC 38+50.9

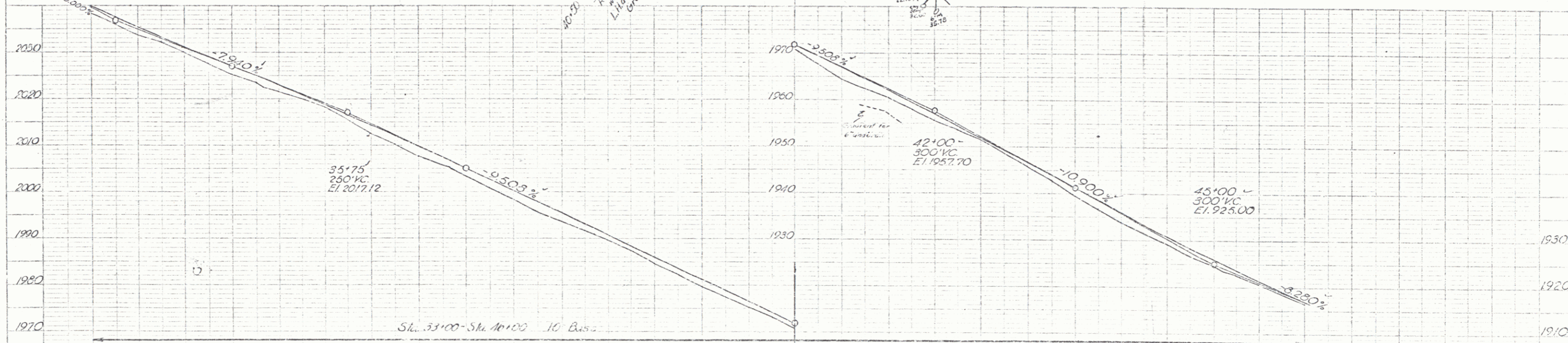


TWO-CABLE GUARD-RAIL
 33+00 - 34+00 LF
 39+00 - 41+00 LF
 43+00 - 44+21 LF
 45+40 - 46+00 LF

Two Cable Guard Rail
 33+00 - 34+00 LF
 39+00 - 41+00 LF
 43+30 - 46+00 LF

Drives
 44+25 RI

TURNOUT
 38+00 - 39+00 RI



2030	2020	2010	2000	1990	1980	1970
10+00	15+00	20+00	25+00	30+00	35+00	40+00
45+00	46+00					

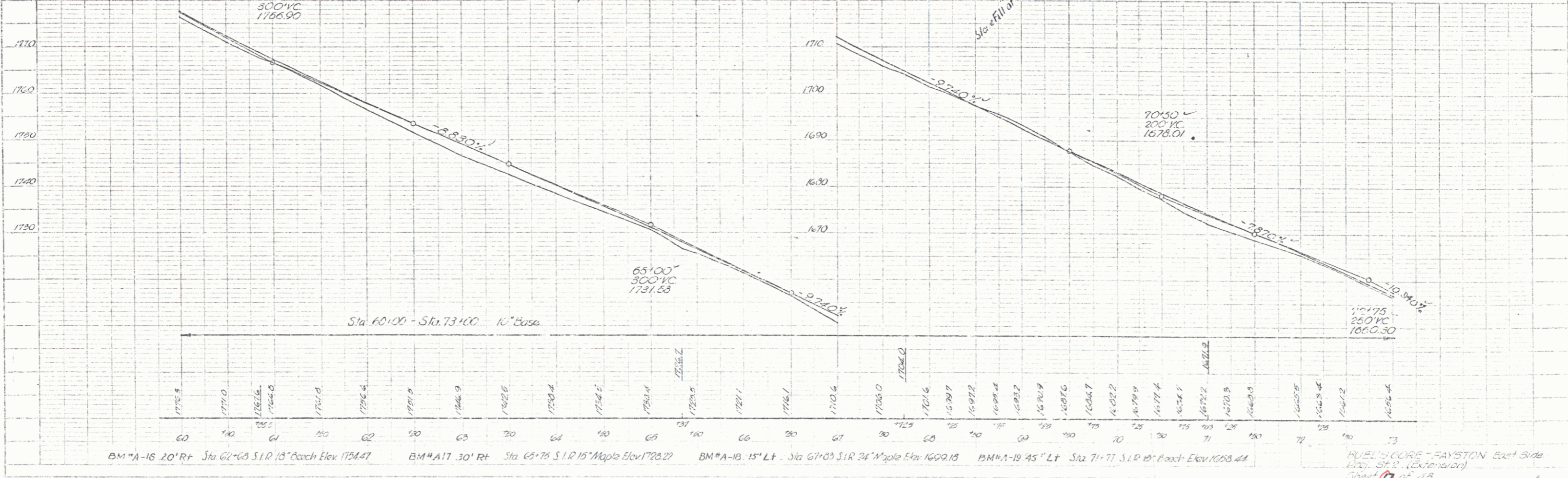
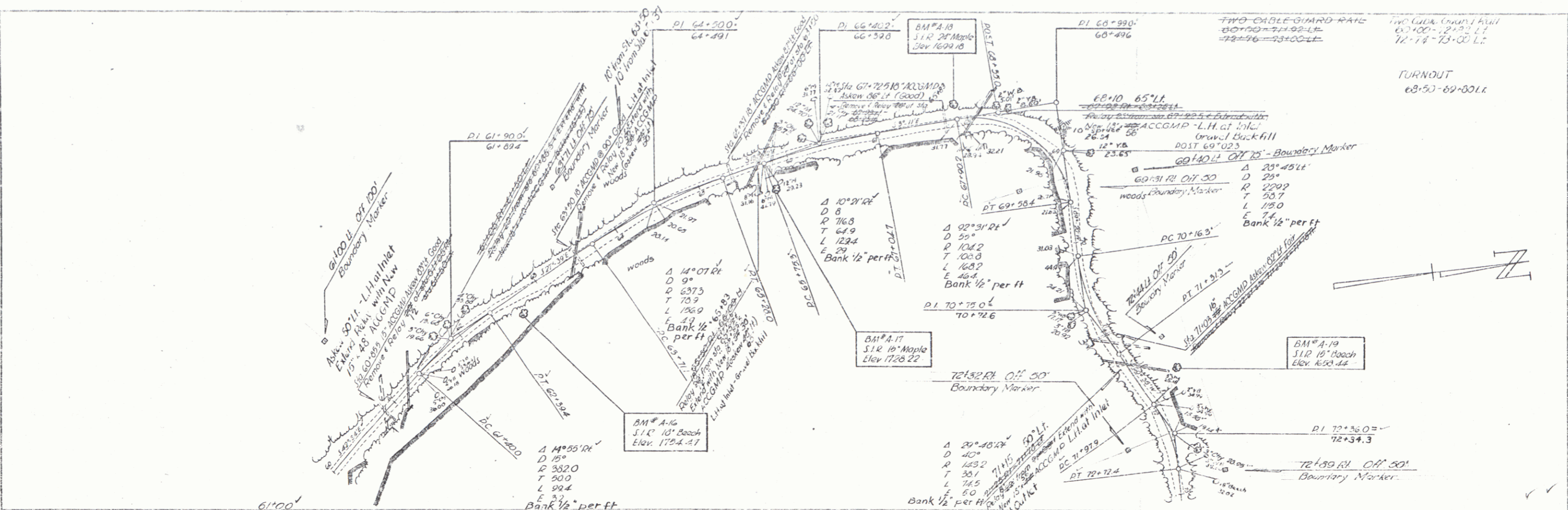
Sta. 33+00 - Sta. 46+00 10' Bas.

BM *A 7 S.I.R. 15' Birch 7 1/2" L. Sta. 34+05 E1 2021.12
 BM *A 8 S.I.R. 12' Y Birch 36" L. Sta. 37+87 E1 1999.12
 BM *A 9 S.I.R. 30" Maple 25.5" R. Sta. 41+90 E1 1950.57
 BM *A 10 S.I.R. 18" Maple 18" L. Sta. 44+21 E1 1931.76

BUEL'S GORE - FAYSTON, East Side
 Proj. 5: 2 (extension)
 Sheet 15 of 23

AUG 18 1980 4

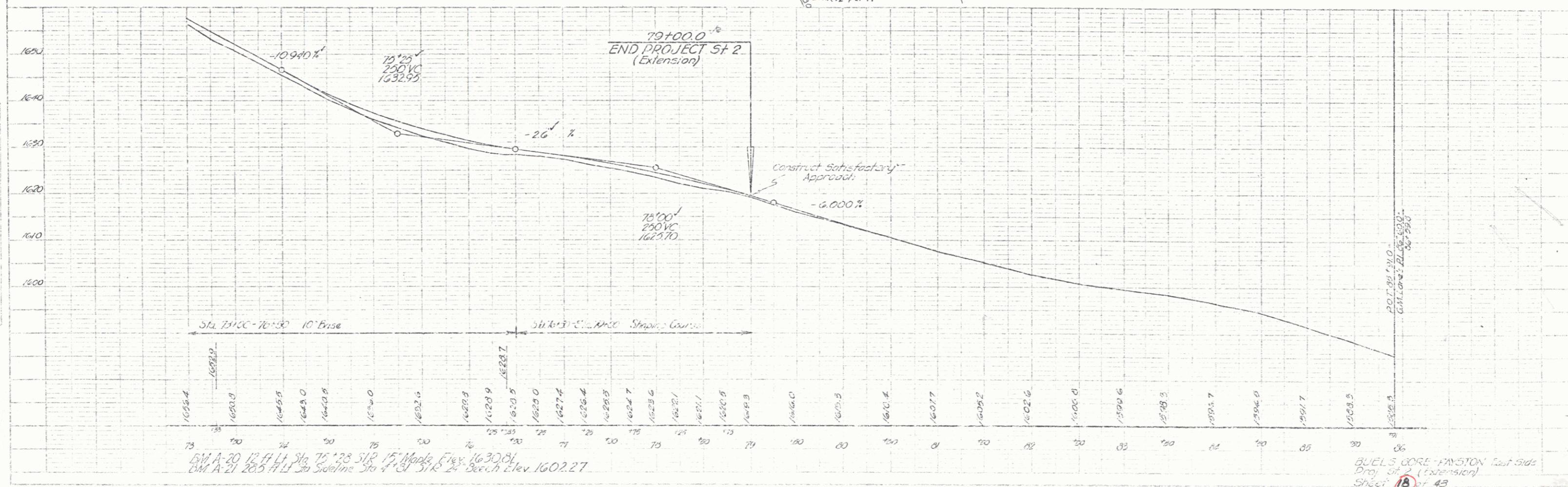
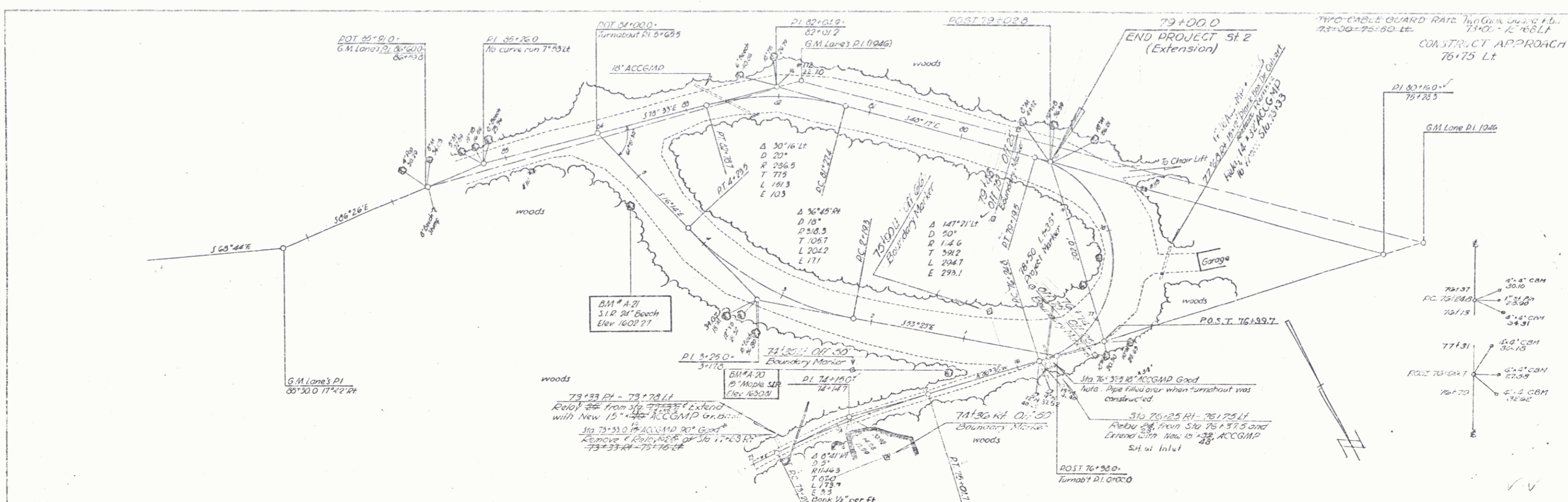
PLAN
 DATE: 7/29/80
 DRAWN BY: J. W. B. / J. W. B.
 CHECKED BY: J. W. B. / J. W. B.
 SCALE: AS SHOWN
 NOTES: ALL DIMENSIONS IN FEET UNLESS OTHERWISE NOTED.
 1. ALL DIMENSIONS TO CENTERLINE UNLESS OTHERWISE NOTED.
 2. ALL DIMENSIONS TO FACE UNLESS OTHERWISE NOTED.
 3. ALL DIMENSIONS TO SURFACE UNLESS OTHERWISE NOTED.
 4. ALL DIMENSIONS TO CENTERLINE UNLESS OTHERWISE NOTED.
 5. ALL DIMENSIONS TO FACE UNLESS OTHERWISE NOTED.
 6. ALL DIMENSIONS TO SURFACE UNLESS OTHERWISE NOTED.



BM A-16 20' RT Sta. 61+68 S.I.R. 18' Beach Elev. 1754.47
 BM A-17 30' RT Sta. 65+75 S.I.R. 15' Maple Elev. 1726.22
 BM A-18 15' LT Sta. 67+05 S.I.R. 24' Maple Elev. 1699.18
 BM A-19 45' LT Sta. 71+77 S.I.R. 18' Beach Elev. 1658.44

AUG 18 1980

DATE	7-30
BY	W.H.C.
CHECKED	
SCALE	AS SHOWN
PROJECT	BUEL'S GORE - WINSTON East Side
NO. OF SHEETS	43
SHEET NO.	18



BM A-20 12' Ht. Sta 75+23.51R 15' Maple Elev. 1630.81
 BM A-21 20.5' Ht. Sta 75+31.12R 24' Beech Elev. 1602.27

BUEL'S GORE - WINSTON East Side
 Proj. St. 2 (Extension)
 Sheet 18 of 43

AUG 18 1980

