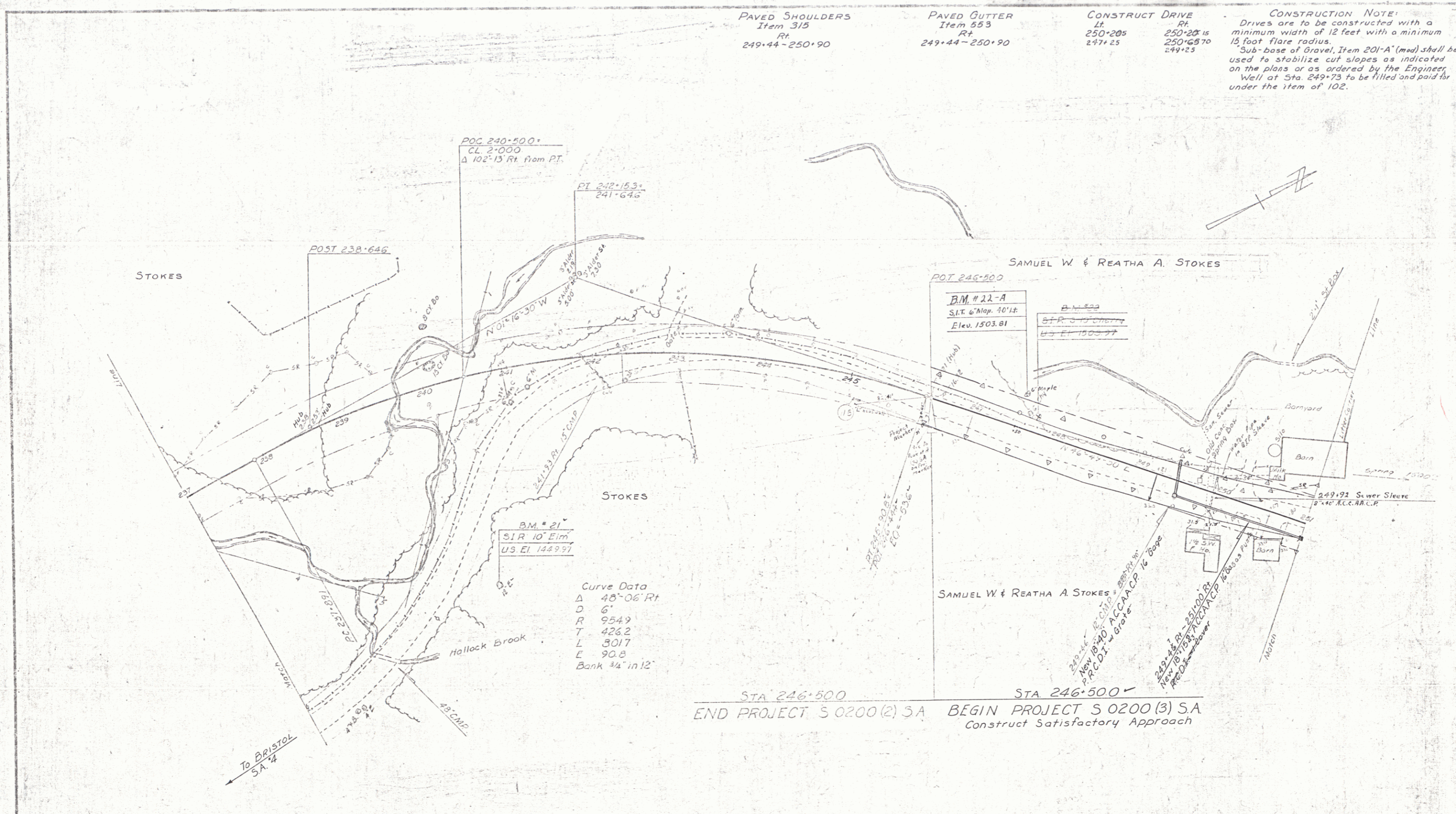


PAVED SHOULDERS
Item 315
Rt
249+44-250+90

PAVED CUTTER
Item 553
Rt
249+44-250+90

CONSTRUCT DRIVE
Lt
250+205
Rt
250+205 to
250+657 to
249+25

CONSTRUCTION NOTE:
Drives are to be constructed with a minimum width of 12 feet with a minimum 15 foot flare radius.
Sub-base of Gravel, Item 201-A (mod) shall be used to stabilize cut slopes as indicated on the plans or as ordered by the Engineer.
Well at Sta. 249+73 to be filled and paid for under the item of 102.



STA 246+500 END PROJECT S 0200 (2) SA STA 246+500 BEGIN PROJECT S 0200 (3) SA
Construct Satisfactory Approach

STARBUCKS
Project S11-0200(3) SA
Sheet 60 of 67