

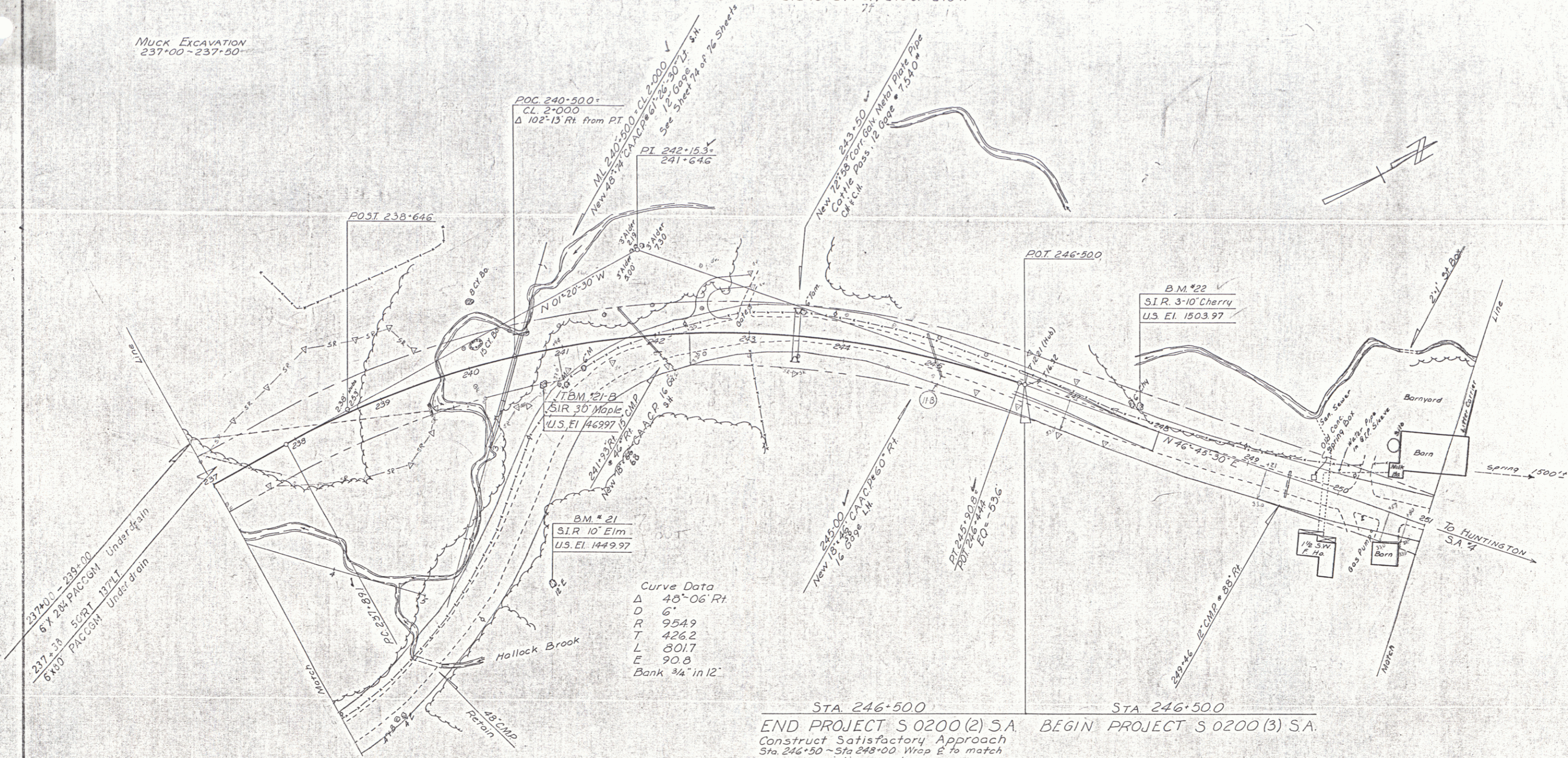
WOOD GUIDE POSTS 16' ⁶/₁₆
Rt
243-34-243-66

UNCLASSIFIED CHANNEL EXCAVATION
CL 2+49 - CL 2+75

TWO CABLE GUARD RAIL
Sta
240-25 - 242-27 237+00 - 237+40
242+75 - 244+51 240+01 - 240+49
77

CONSTRUCT DRIVE
Rt
242-50 - 241-50

MUCK EXCAVATION
237+00 - 237+50



STA 246+500 STA 246+500
END PROJECT S 0200 (2) S.A. BEGIN PROJECT S 0200 (3) S.A.
Construct Satisfactory Approach
Sta 246+50 - Sta 248+00. Wrap E to match
existing roadway