

DRILLING & BLASTING of SOLID  
ROCK SUB-GRADE  
81+75-88+88 85  
82+64

TWO CABLE GUARD RAIL (Mod)  
81+09-81+43 78+00-88+20  
80+90 -88+76-92+00

UNCLASSIFIED CHANNEL EXCAVATION  
91+50.5 Rt - 92+00 Rt

METAL BIN-TYPE RETAINING WALL  
88+45 Lt - 91+60 Lt

PARCEL	: G.P.C. STA. 71+40-93+46
GRANTOR	: EDWIN W. ORVIS
TAKING	: 0.52 R.M.
RIGHTS, Slope	: 78+88-78+25 Lt, 81+40-82+55 Lt,
	: 92+35-95+24 26+190 37+50 Lt, 37+14-38+35 Rt.
TITLE TAKEN	: _____
RECORDED	: _____
RIGHTS, DRAINAGE	: 81+33 Lt.

Rev. PI 80+91.5  
80+89.9  
Sur. PI 81+00.8  
80+93.2  
Δ 12' 26" Rt.  
D 3'

BM#8  
Chis on wingwall  
US FI 910.63  
H.M. No. 8-11  
Set in Stream 40%  
Elev. 914.41

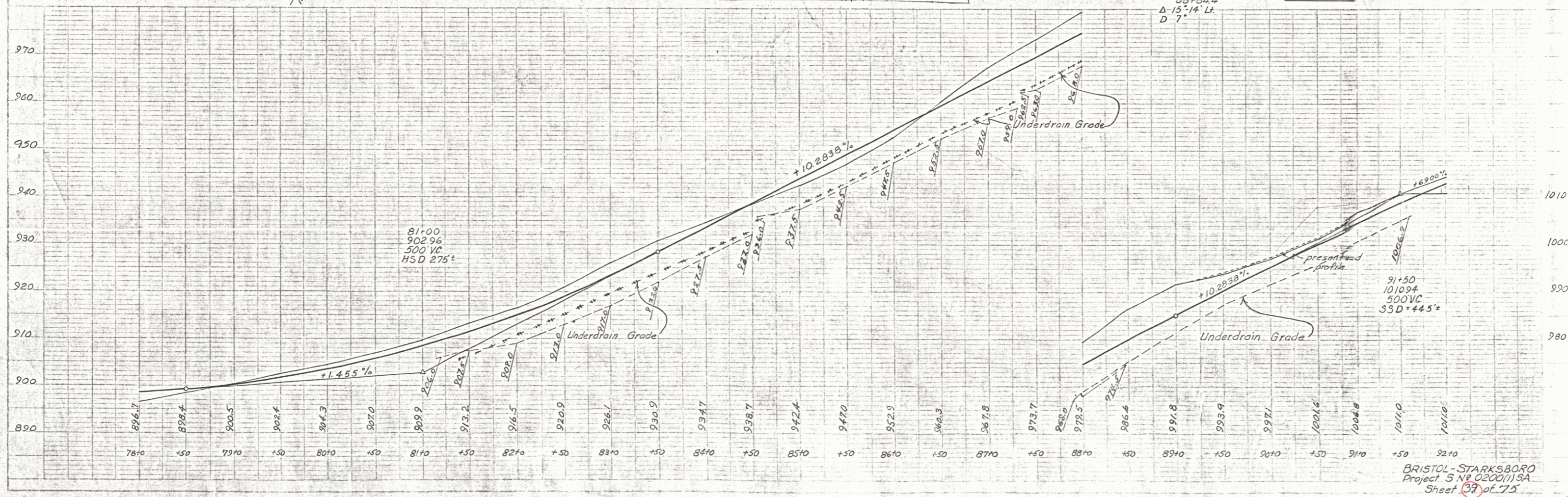
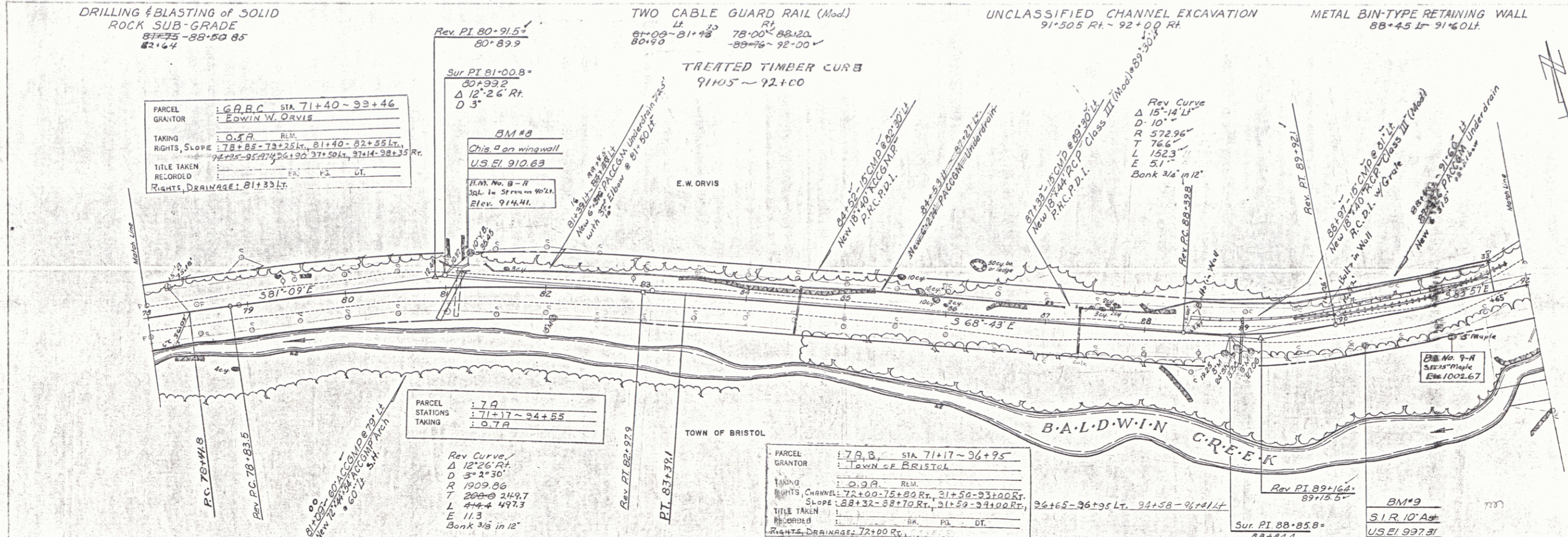
TREATED TIMBER CURB  
91+05 - 92+00

Rev. Curve  
Δ 15' 14" Lt.  
D 10' Lt.  
R 572.96'  
T 766'  
L 152.3'  
E 51'  
Bank 3/8" in 12"

Rev. PI 89+92.1  
89+91.5  
Sur. PI 88+85.8  
88+84.4  
Δ 15' 14" Lt.  
D 7'

BM#9  
S.I.R. 10' Ag  
US FI 937.81

Smart  
1/2" = 100'  
C.E.H.



BRISTOL-STARKSBORO  
Project S NE 0200119A  
Sheet 39 of 75