

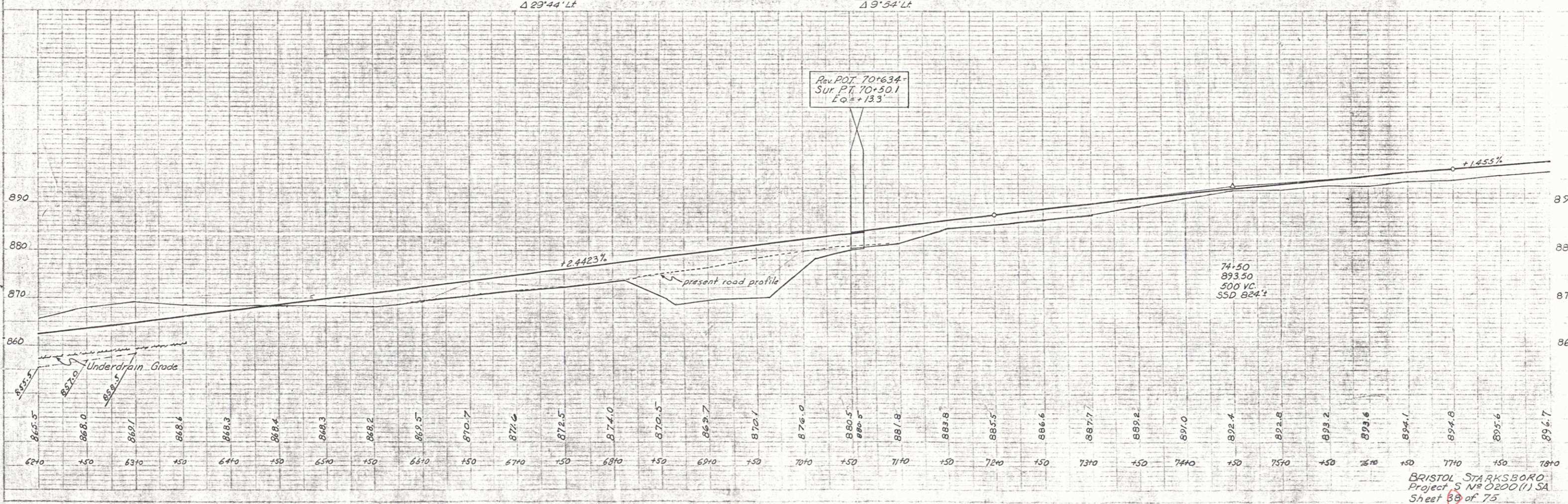
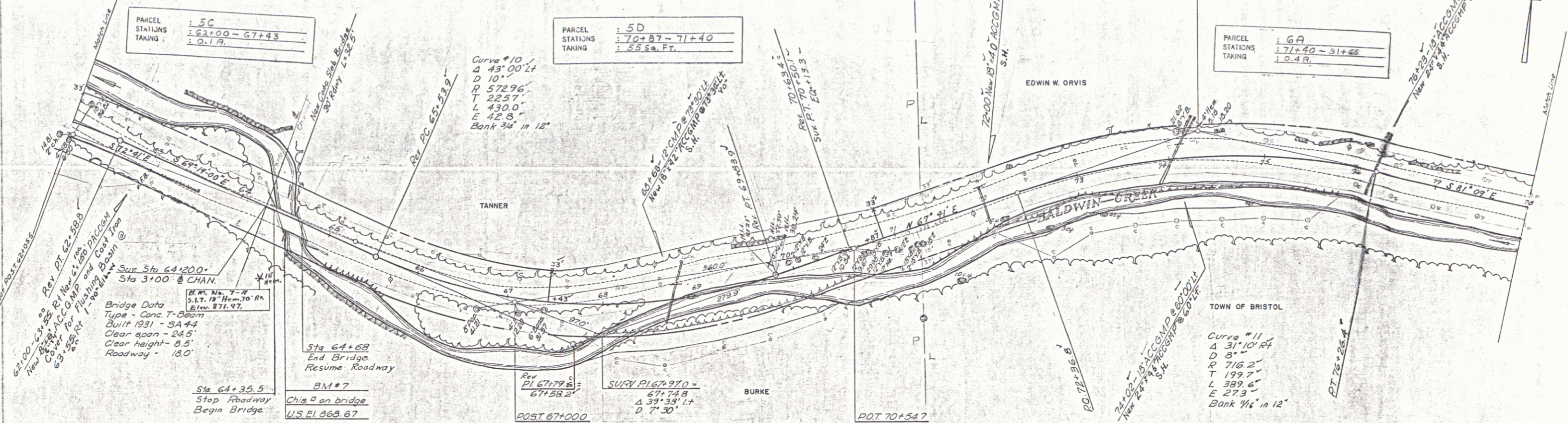
6' SHOULDER TWO CABLE GUARD RAIL (Mod)
 LT RT LT RT
 63+29-64+89 64+15-65+55.5 63+29-64+89 64+15-65+55.5
 4' SHOULDER
 LT RT
 65+39-65+55.5 63+55-63+65

64+50+LT-66+75+LT
 DIVERT EXISTING WATER COURSE INTO OLD WATER COURSE LOCATED APPROXIMATELY 110' TO 120' LEFT OF STA. 66+75= NECESSARY EXCAVATION TO BE PAID FOR UNDER THE ITEM OF UNCLASSIFIED CHANNEL EXCAVATION, ITEM 106-C

UNCLASSIFIED CHANNEL EXCAVATION
 67+59 RT-70+63.3 RT.
 72+00 RT-75+75 RT.

STONE FILL FOR SLOPE PROTECTION
 RT
 65+25-65+75'
 67+35-70+75'
 71-25-75+75'

PLAN
 GENERAL NOTES
 1. ALL DIMENSIONS ARE IN FEET AND DECIMALS THEREOF.
 2. ALL CURVES ARE TO BE CONSTRUCTED ACCORDING TO THE STANDARD SPECIFICATIONS FOR HIGHWAYS.
 3. ALL GRADES ARE TO BE CONSTRUCTED ACCORDING TO THE STANDARD SPECIFICATIONS FOR HIGHWAYS.
 4. ALL ELEVATIONS ARE TO BE CONSTRUCTED ACCORDING TO THE STANDARD SPECIFICATIONS FOR HIGHWAYS.
 5. ALL DISTANCES ARE TO BE CONSTRUCTED ACCORDING TO THE STANDARD SPECIFICATIONS FOR HIGHWAYS.
 6. ALL ANGLES ARE TO BE CONSTRUCTED ACCORDING TO THE STANDARD SPECIFICATIONS FOR HIGHWAYS.
 7. ALL SLOPES ARE TO BE CONSTRUCTED ACCORDING TO THE STANDARD SPECIFICATIONS FOR HIGHWAYS.
 8. ALL PROFILES ARE TO BE CONSTRUCTED ACCORDING TO THE STANDARD SPECIFICATIONS FOR HIGHWAYS.
 9. ALL STATIONS ARE TO BE CONSTRUCTED ACCORDING TO THE STANDARD SPECIFICATIONS FOR HIGHWAYS.
 10. ALL POINTS ARE TO BE CONSTRUCTED ACCORDING TO THE STANDARD SPECIFICATIONS FOR HIGHWAYS.
 11. ALL TANGENTS ARE TO BE CONSTRUCTED ACCORDING TO THE STANDARD SPECIFICATIONS FOR HIGHWAYS.
 12. ALL CHANGES ARE TO BE CONSTRUCTED ACCORDING TO THE STANDARD SPECIFICATIONS FOR HIGHWAYS.
 13. ALL ADJUSTMENTS ARE TO BE CONSTRUCTED ACCORDING TO THE STANDARD SPECIFICATIONS FOR HIGHWAYS.
 14. ALL CORRECTIONS ARE TO BE CONSTRUCTED ACCORDING TO THE STANDARD SPECIFICATIONS FOR HIGHWAYS.
 15. ALL REVISIONS ARE TO BE CONSTRUCTED ACCORDING TO THE STANDARD SPECIFICATIONS FOR HIGHWAYS.
 16. ALL NOTES ARE TO BE CONSTRUCTED ACCORDING TO THE STANDARD SPECIFICATIONS FOR HIGHWAYS.
 17. ALL DIMENSIONS ARE TO BE CONSTRUCTED ACCORDING TO THE STANDARD SPECIFICATIONS FOR HIGHWAYS.
 18. ALL GRADES ARE TO BE CONSTRUCTED ACCORDING TO THE STANDARD SPECIFICATIONS FOR HIGHWAYS.
 19. ALL DISTANCES ARE TO BE CONSTRUCTED ACCORDING TO THE STANDARD SPECIFICATIONS FOR HIGHWAYS.
 20. ALL ANGLES ARE TO BE CONSTRUCTED ACCORDING TO THE STANDARD SPECIFICATIONS FOR HIGHWAYS.
 21. ALL SLOPES ARE TO BE CONSTRUCTED ACCORDING TO THE STANDARD SPECIFICATIONS FOR HIGHWAYS.
 22. ALL PROFILES ARE TO BE CONSTRUCTED ACCORDING TO THE STANDARD SPECIFICATIONS FOR HIGHWAYS.
 23. ALL STATIONS ARE TO BE CONSTRUCTED ACCORDING TO THE STANDARD SPECIFICATIONS FOR HIGHWAYS.
 24. ALL POINTS ARE TO BE CONSTRUCTED ACCORDING TO THE STANDARD SPECIFICATIONS FOR HIGHWAYS.
 25. ALL TANGENTS ARE TO BE CONSTRUCTED ACCORDING TO THE STANDARD SPECIFICATIONS FOR HIGHWAYS.
 26. ALL CHANGES ARE TO BE CONSTRUCTED ACCORDING TO THE STANDARD SPECIFICATIONS FOR HIGHWAYS.
 27. ALL ADJUSTMENTS ARE TO BE CONSTRUCTED ACCORDING TO THE STANDARD SPECIFICATIONS FOR HIGHWAYS.
 28. ALL CORRECTIONS ARE TO BE CONSTRUCTED ACCORDING TO THE STANDARD SPECIFICATIONS FOR HIGHWAYS.
 29. ALL REVISIONS ARE TO BE CONSTRUCTED ACCORDING TO THE STANDARD SPECIFICATIONS FOR HIGHWAYS.
 30. ALL NOTES ARE TO BE CONSTRUCTED ACCORDING TO THE STANDARD SPECIFICATIONS FOR HIGHWAYS.



BRISTOL STARKSBORO
 Project S N 0200 (1) SA
 Sheet 69 of 75

6