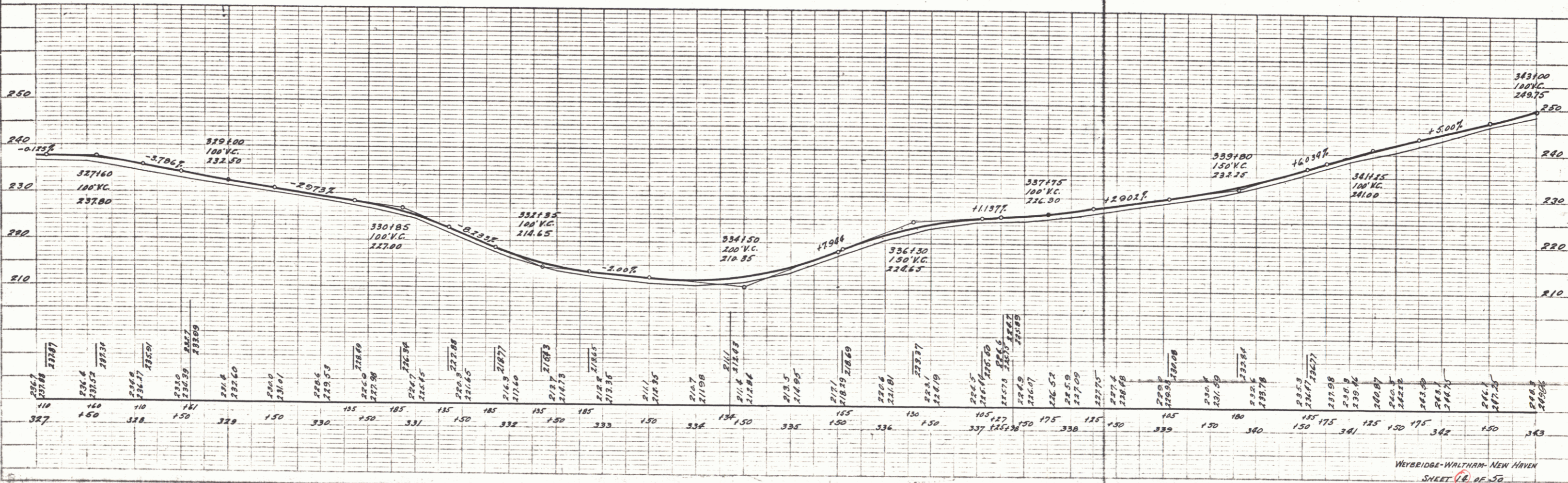
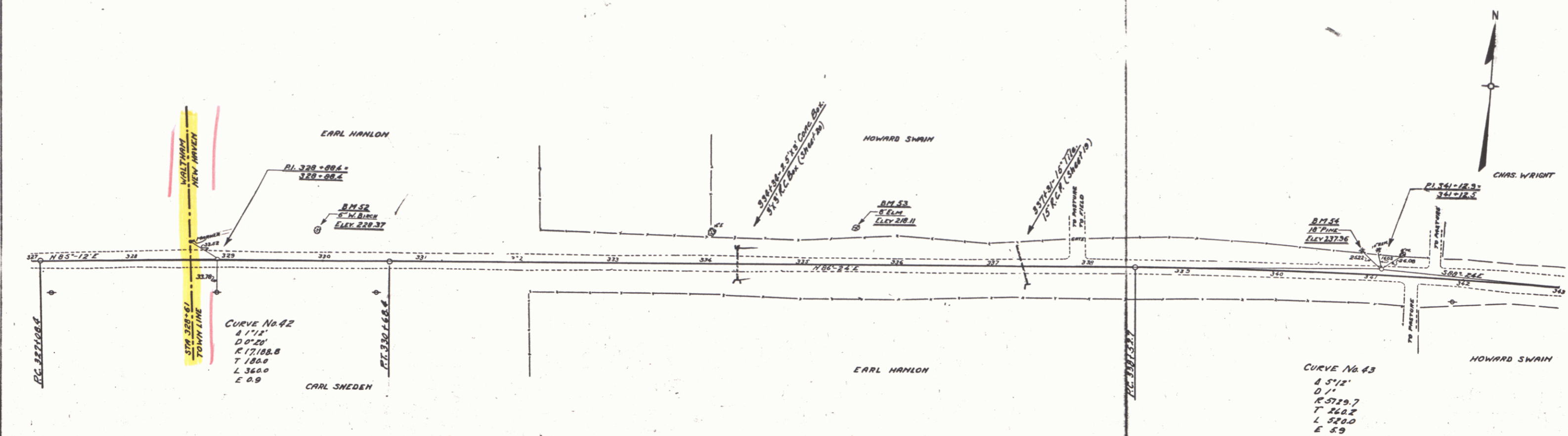


NEW REIN. CONC. PIPE CULVERTS REQUIRED NEW REIN. CONC. BOX CULVERTS REQUIRED  
 Station 337+31 15' 44" 1964 75' Station 334+34 3'x5' 16.0CY 1968

FED. ROAD STATE FED. AID TOTAL SHEET TOTAL  
 DIST. NO. PROJ. NO. YEAR 1930 14 50

DATE	
BY	
SCALE	
PROJECT	
NO. 1	
NO. 2	
NO. 3	
NO. 4	
NO. 5	
NO. 6	
NO. 7	
NO. 8	
NO. 9	
NO. 10	

PROJECT	
NO. 1	
NO. 2	
NO. 3	
NO. 4	
NO. 5	
NO. 6	
NO. 7	
NO. 8	
NO. 9	
NO. 10	



WYBRIDGE-WALTHAM-NEW HAVEN  
 SHEET 14 OF 50