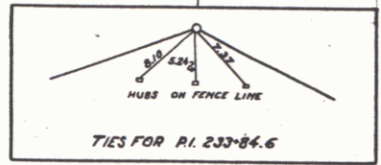
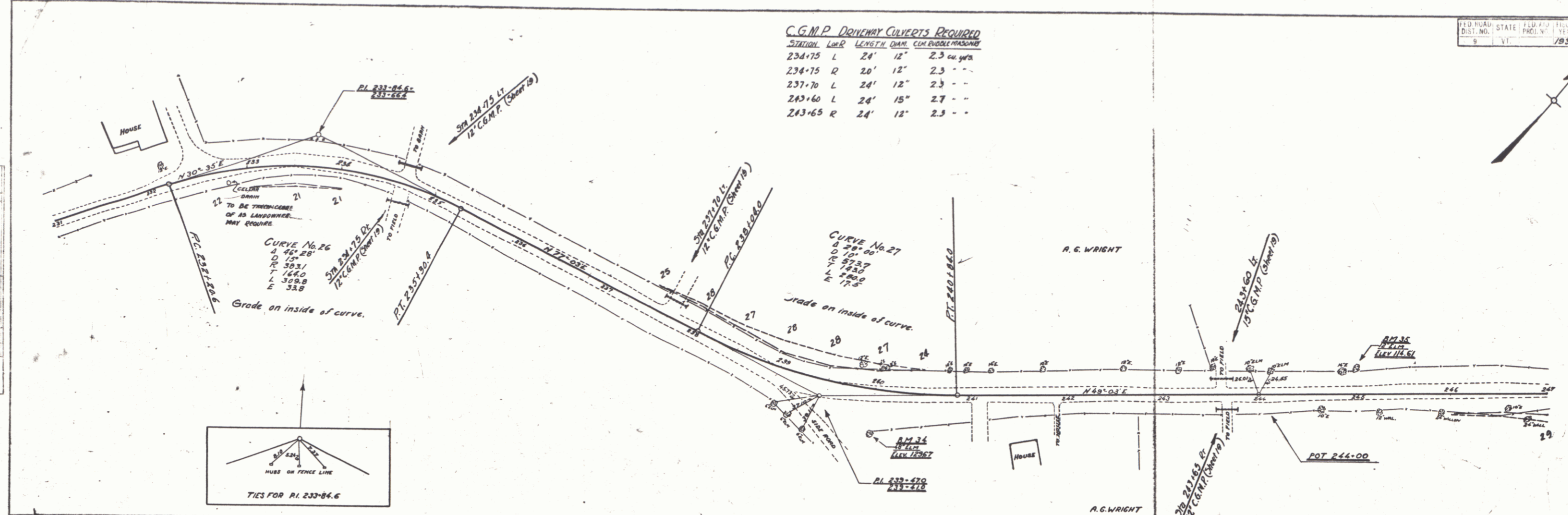


C.G.M.P. DOWNGRADE CULVERTS REQUIRED

STATION	LEN. R.	LENGTH	DIAM.	CURVE	CONCRETE
234+75	L	24'	12"	2.3	cu. yds.
234+75	R	20'	12"	2.3	-
237+70	L	24'	12"	2.3	-
243+60	L	24'	15"	2.7	-
243+65	R	24'	12"	2.3	-

PLAN
 REVISIONS
 DATE MADE
 DRAWN BY
 CHECKED BY
 IN CHARGE



PROFILE
 REVISIONS
 DATE MADE
 DRAWN BY
 CHECKED BY
 IN CHARGE

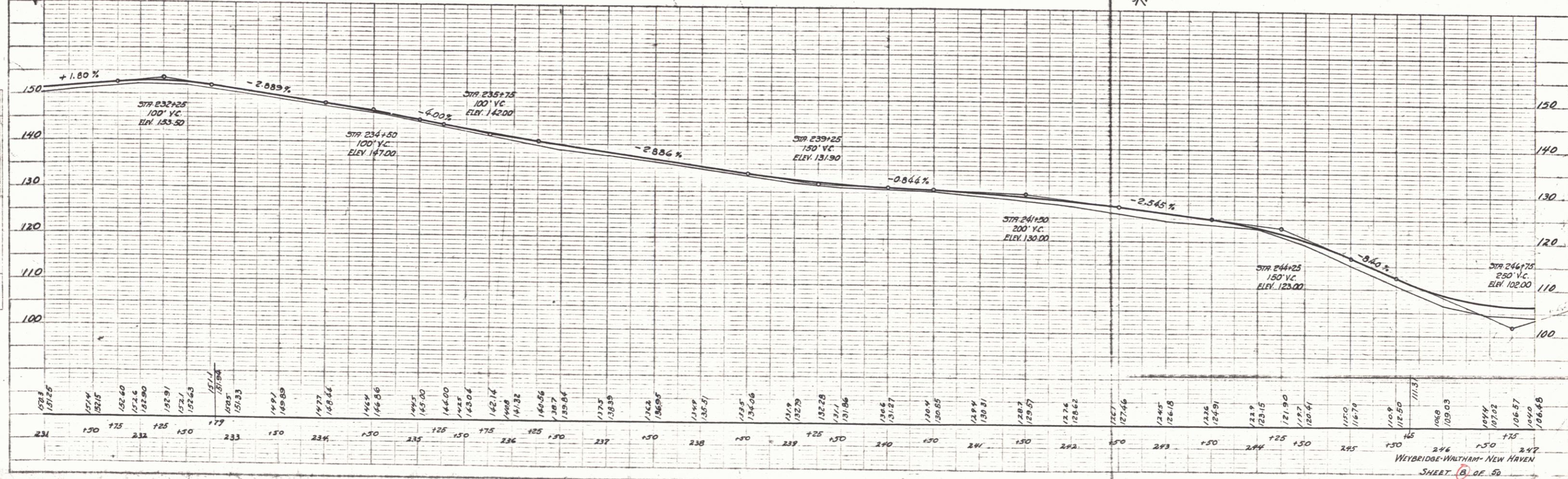


PLATE 1 - PLAN, PROFILE & P.C. & C. STATIONS
 Weybridge-Waltham - New Haven

5