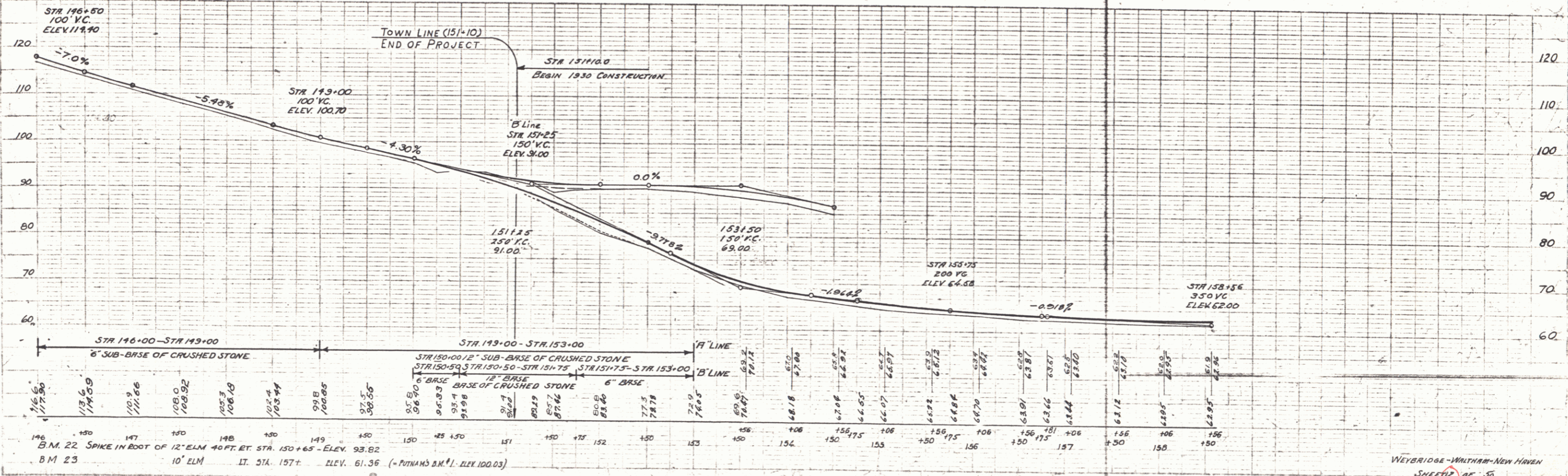
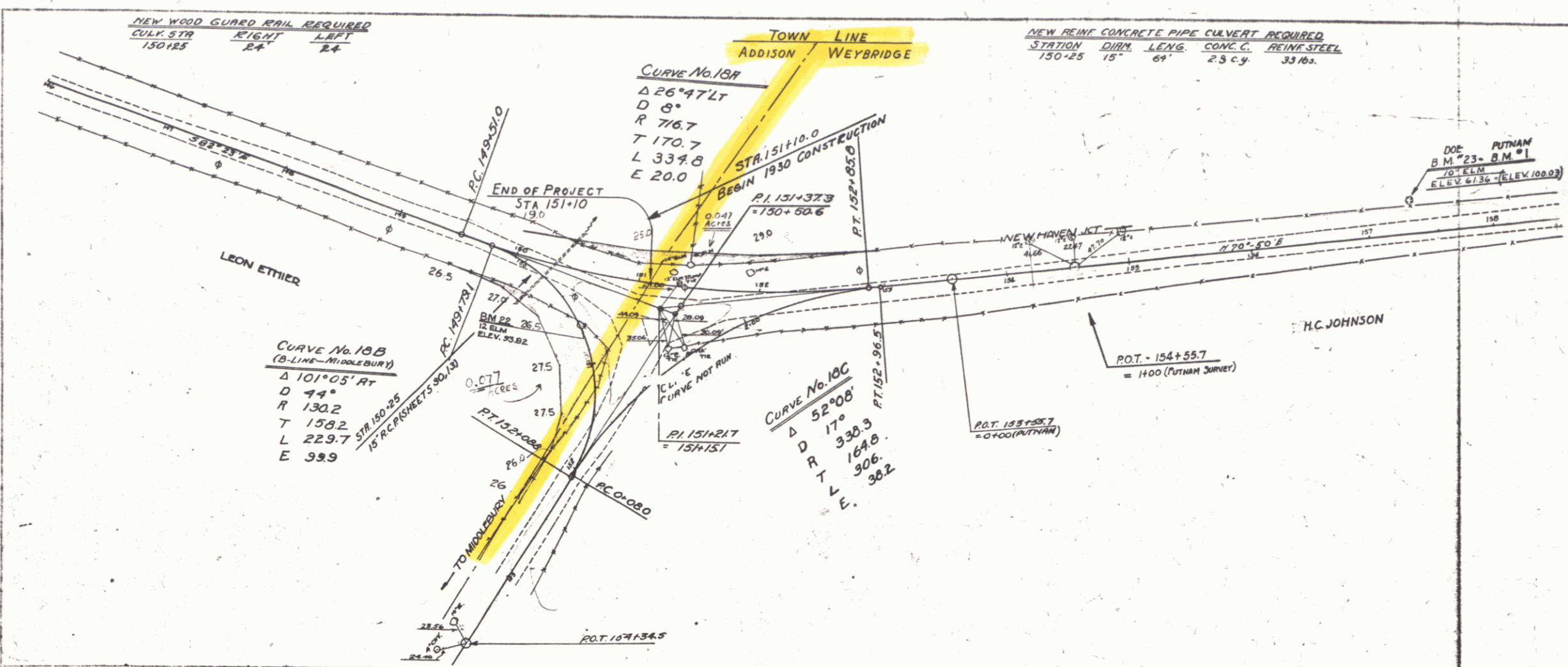


NEW WOOD GUARD RAIL REQUIRED  
 CULV. STR. RIGHT LEFT  
 130+25 24' 24'

NEW REIN. CONCRETE PIPE CULVERT REQUIRED  
 STATION DIM. LENG. CONC. REIN. STEEL  
 130+25 15' 6" 23 c.g. 33 lbs.

FED. ROAD STATE DIST. NO. 1930 12 50  
 VT. 1930 12 50



DOE CHANCE 7-8-30

DOE CHANCE 8-2-30

B.M. 22 SPIKE IN ROOT OF 12" ELM 40 FT. ET. STA. 150+65 - ELEV. 93.82  
 B.M. 23 10' ELM IT. STA. 157+ ELEV. 61.36 (- PUTNAM'S B.M. #1. ELEV. 100.03)

WEYBRIDGE-WALTHAM-NEW HAVEN  
 SHEET 12 OF 35

10