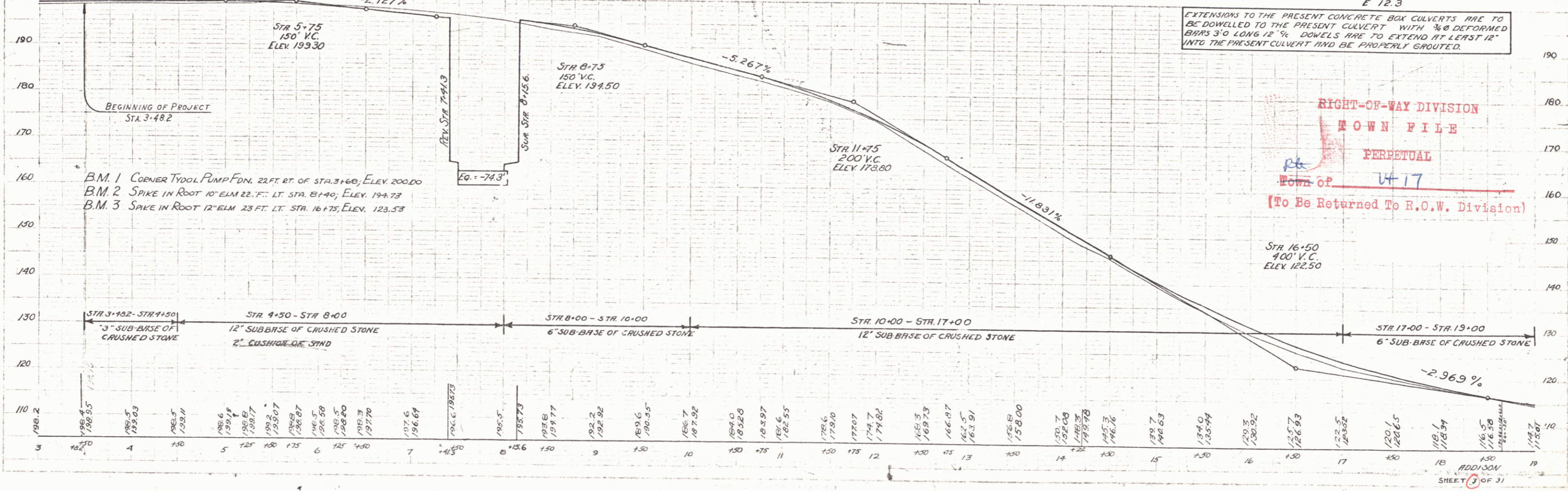
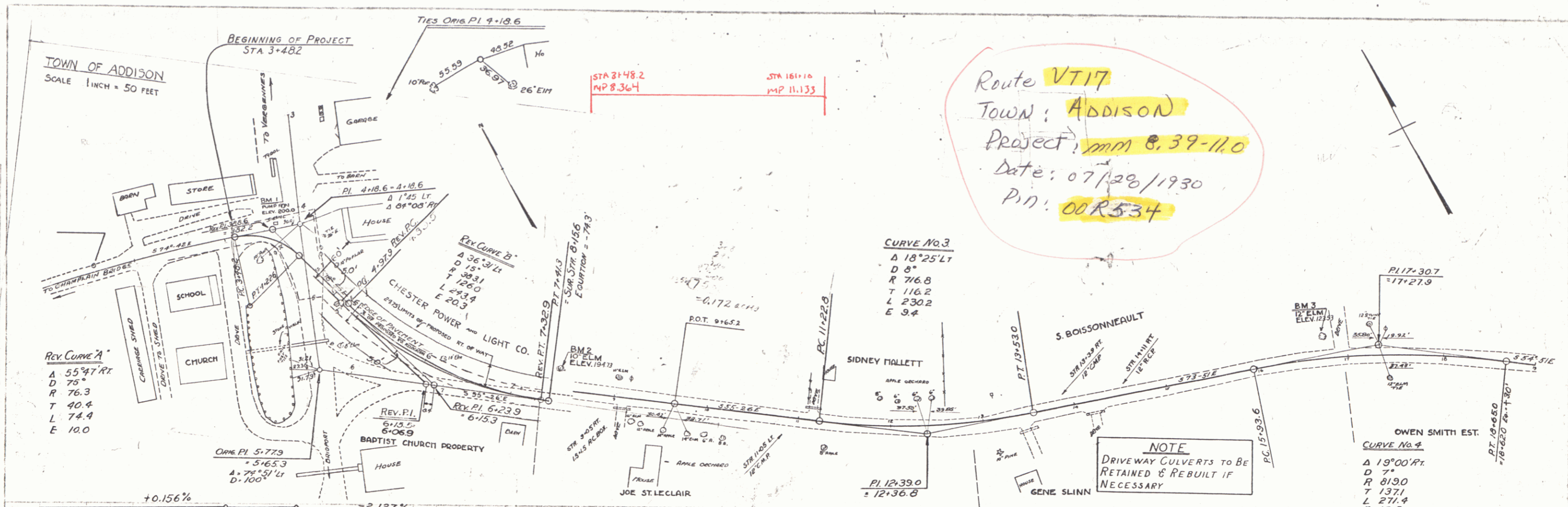


ADDISON 1929 Village East



RIGHT-OF-WAY DIVISION
TOWN FILE
PERPETUAL
Town of VT 17
 (To Be Returned To R.O.W. Division)

RESURFACING GUARD RAIL
 STATIONS LEFT RIGHT
 26+40-30+30 250' -
 28+40-30+10 - 170'

CONCRETE REPAIRS REQUIRED
 STATION PIPE EXTENSION CONC. R. STEEL
 23+77 ±1C.B. 5' ONLY R/W RT 74' eq. 588' 1/4"

PLAN
 DATE 7-23-33
 BY DOR CHANCE
 CHECKED BY [blank]
 NO. [blank]

PROFILE
 DATE 8-2-33
 BY DOR CHANCE
 CHECKED BY [blank]
 NO. [blank]

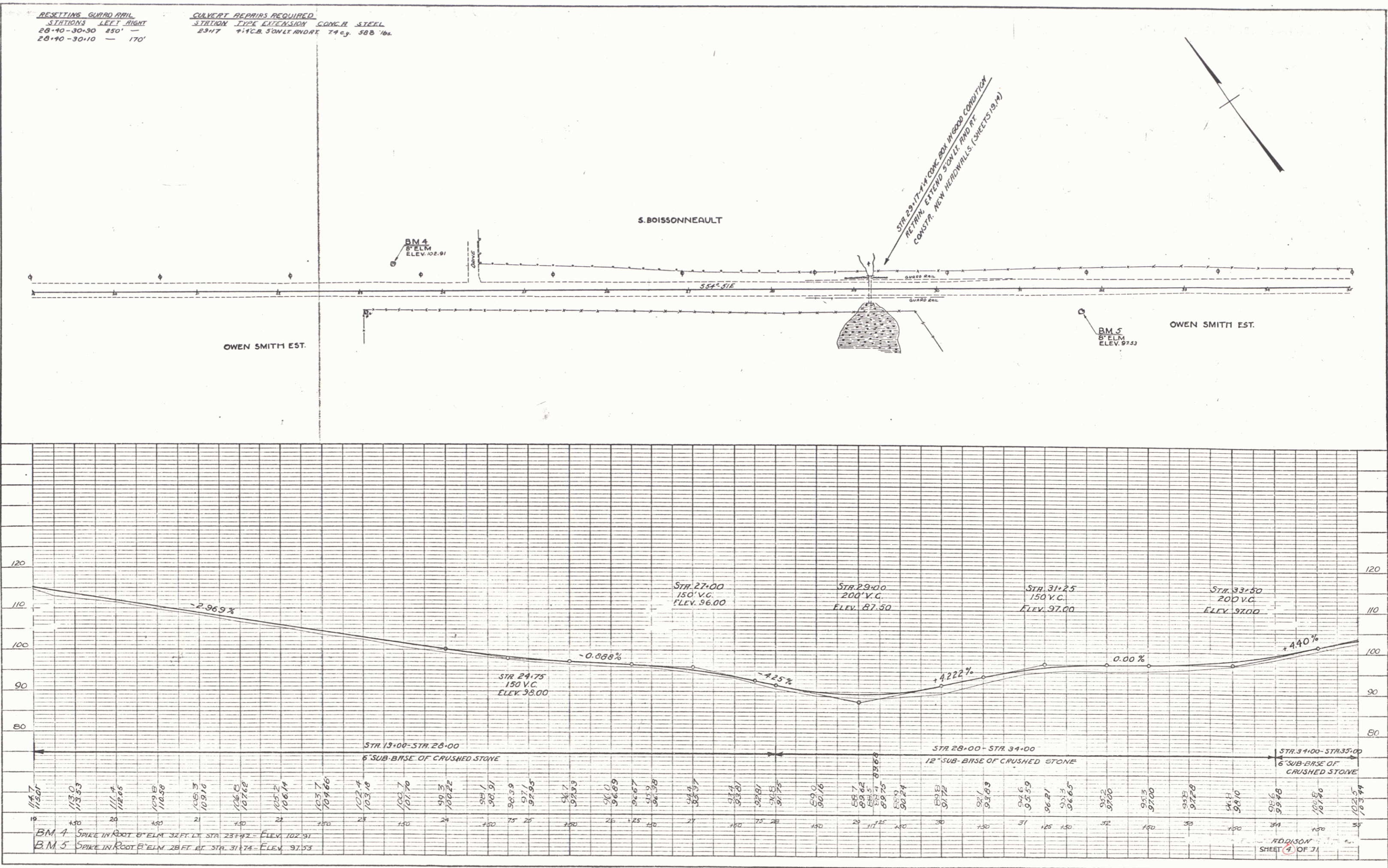


PLATE 1 - PLAN-PROFILE OF P. & A. E. STANBARD
 HUNTER & ESSER CO., NEW YORK.

DATE: 7-28-36
 BY: C. H. CHANCE
 CHECKED: C. H. CHANCE
 PLAN: 11-11-36
 NOTE: FROM PLACEMENT CHECKED BY: C. H. CHANCE
 NO. 11-11-36

DATE: 8-2-30
 BY: C. H. CHANCE
 CHECKED: C. H. CHANCE
 PROJECT: 11-11-36
 NOTE: FROM PLACEMENT CHECKED BY: C. H. CHANCE
 NO. 11-11-36

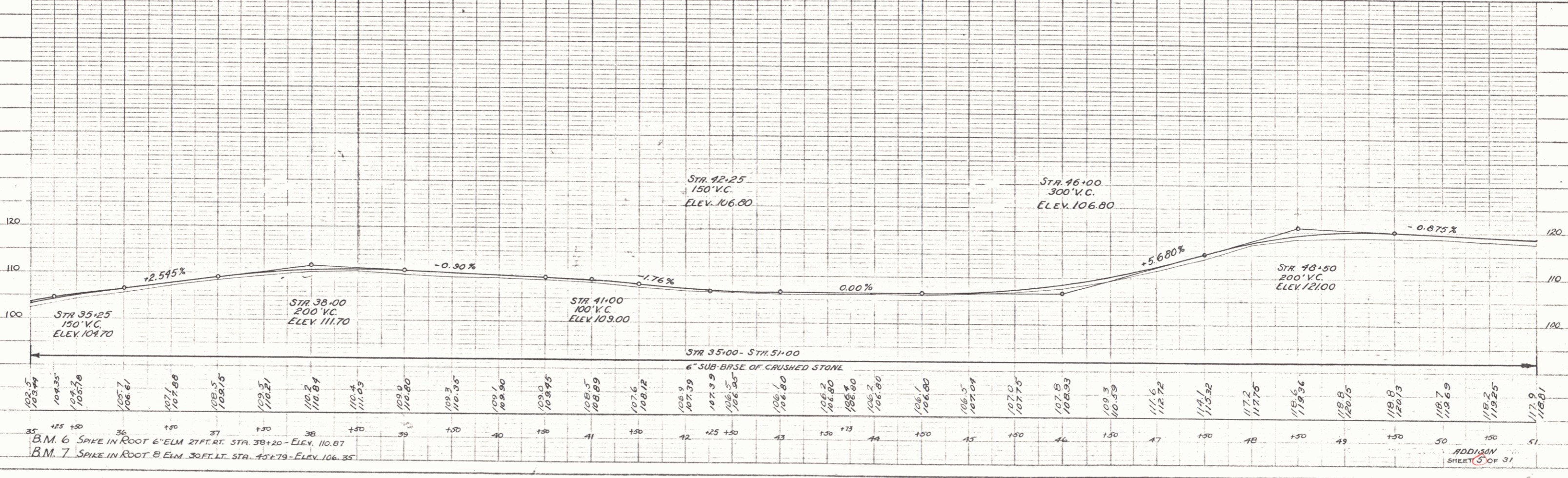
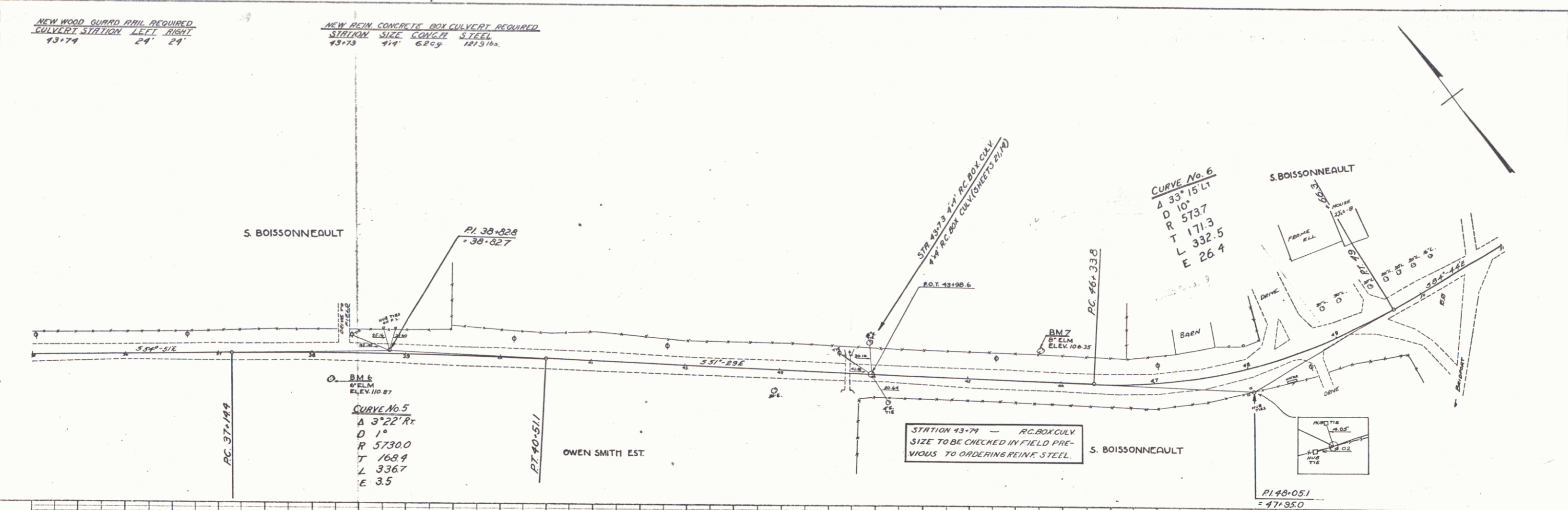


PLATE 1 - PLAN PROFILE C. H. CHANCE
 HUNTSVILLE, ALA.

RODISON
 SHEET 5 OF 31

3

NEW CABLE GUARD RAIL REQUIRED
STATION TO STATION RIGHT LEFT
56+98 - 57+46 48' 48'

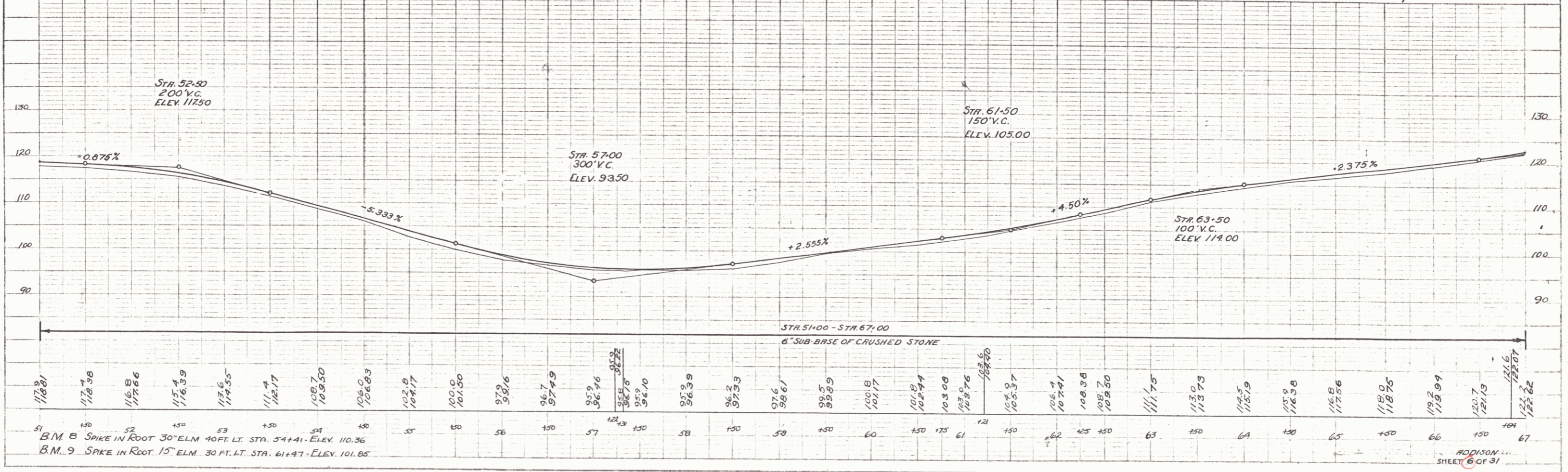
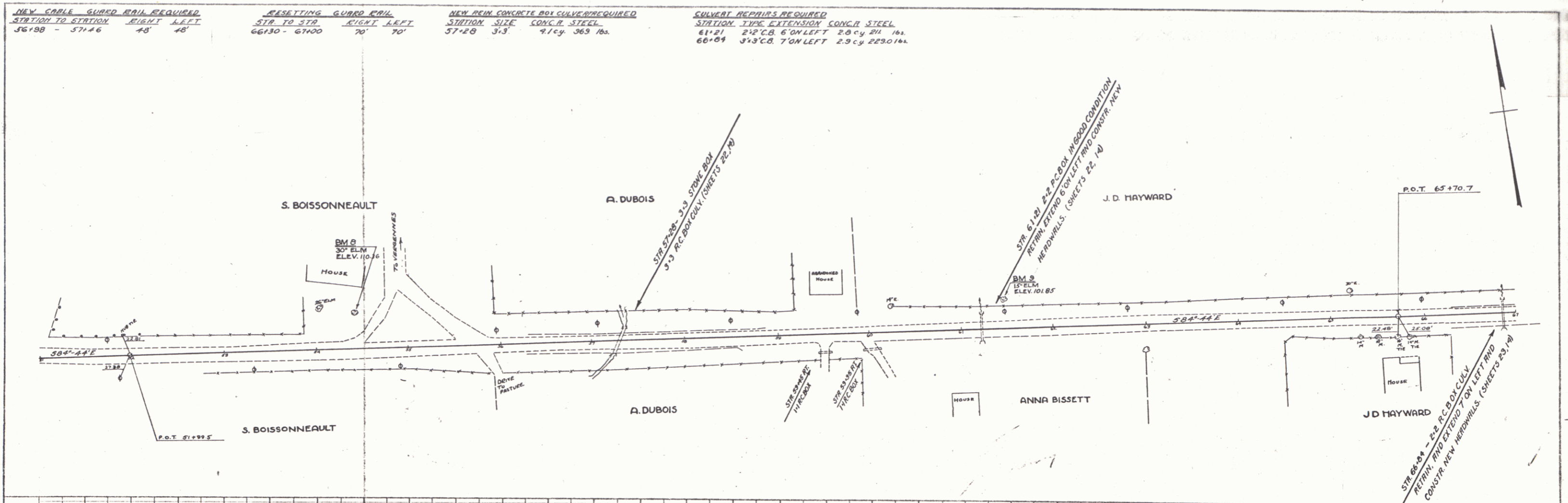
RESETTING GUARD RAIL
STA TO STA RIGHT LEFT
66+30 - 67+00 70' 70'

NEW REIN. CONCRETE BOX CULVERT REQUIRED
STATION SIZE CONC. STEEL
57+28 31.3 4.1cy 363 lbs.

SULVERT REPAIRS REQUIRED
STATION TYPE EXTENSION CONC. STEEL
61+21 2'x2' C.B. 6' ON LEFT 2.0 cy 211 lbs.
66+04 3'x3' C.B. 7' ON LEFT 2.9 cy 223.0 lbs.

PLAN
DATE 7-29-36
BY J.D. HAYWARD
CHECKED J.D. HAYWARD
NOTED: ALL DIMENSIONS TO CENTERLINE UNLESS OTHERWISE NOTED.

PROFILE
DATE 8-2-30
BY J.D. HAYWARD
CHECKED J.D. HAYWARD
NOTED: ALL DIMENSIONS TO CENTERLINE UNLESS OTHERWISE NOTED.



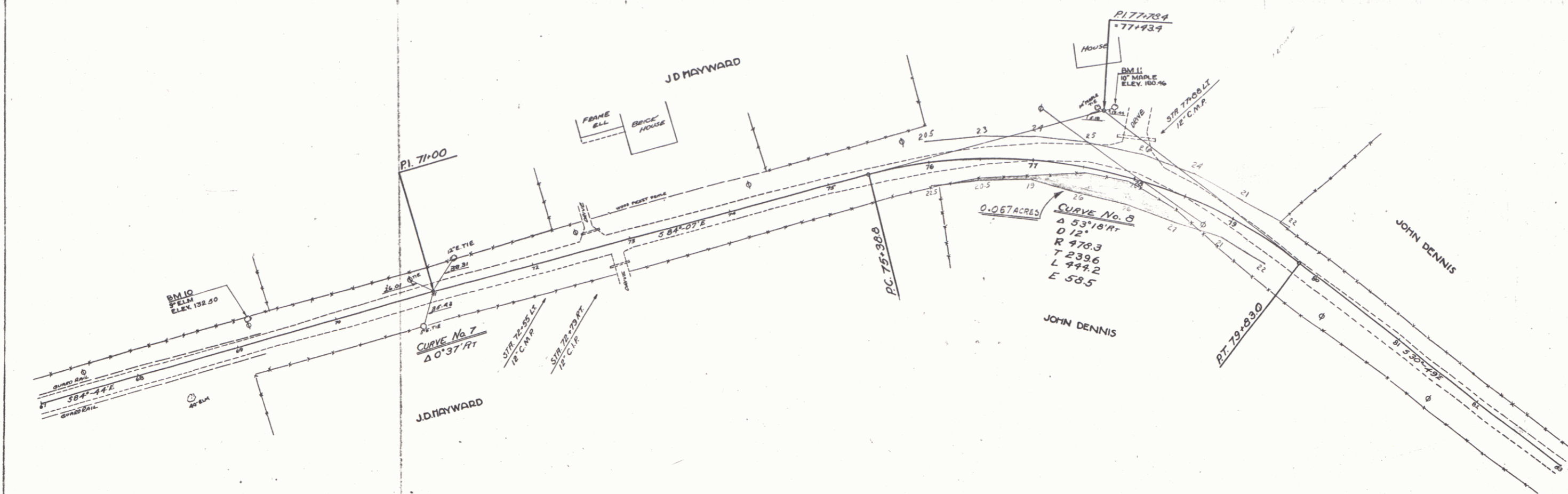
B.M. B SPIKE IN ROOT 30" ELM. 40 FT. LT. STA. 54+41 - ELEV. 110.36
B.M. 9 SPIKE IN ROOT 15" ELM. 30 FT. LT. STA. 61+47 - ELEV. 101.85

PLATE 1 - PLAN PROFILE OF R.R. & STAMPS
MAY 1936

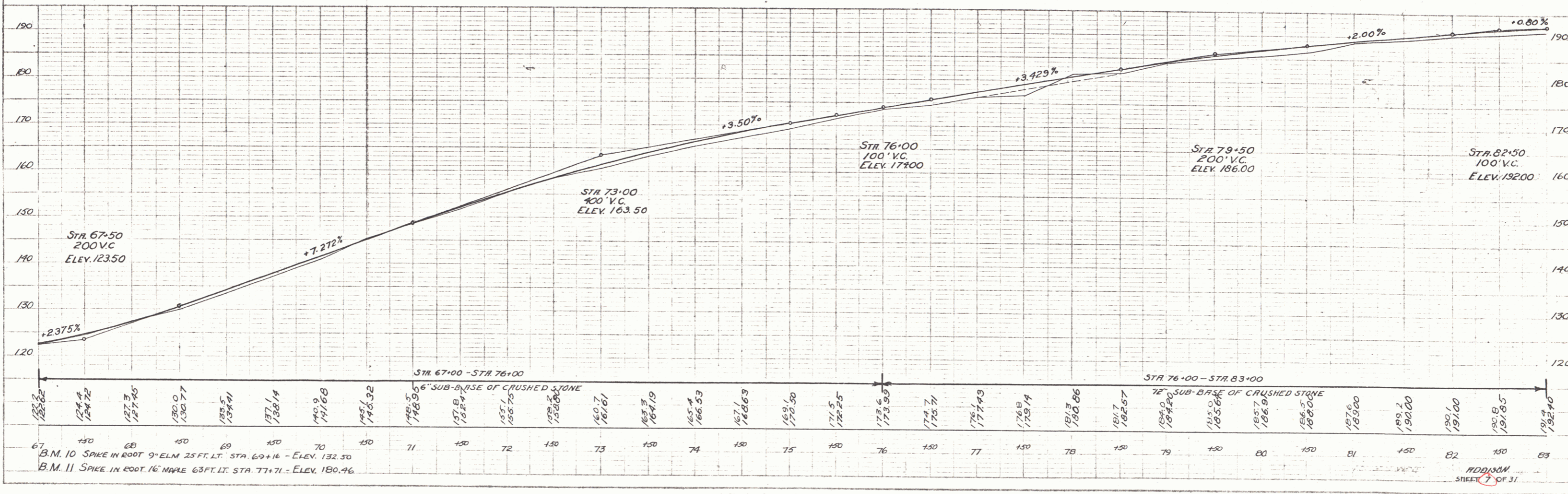
ADAMSON
SHEET 6 OF 9

RESETTING GUARD RAIL
 STA TO STA EIGHT MILE
 67+00 - 69+25 22.5' 22.5'

PLAN
 DATE 11/11/57
 DRAWN BY J. W. HARRIS
 CHECKED BY D. C. CRACE
 SCALE 1" = 40'



PROFILE
 DATE 11/11/57
 DRAWN BY J. W. HARRIS
 CHECKED BY D. C. CRACE
 SCALE 1" = 40'



B.M. 10 SPIKE IN ROOT 9" ELM 25 FT. LT. STA. 69+16 - ELEV. 132.50
 B.M. 11 SPIKE IN ROOT 16" MAPLE 65 FT. LT. STA. 77+71 - ELEV. 180.46

ADDISAM
 SHEET 7 OF 31

5

NEW CABLE GUARD RAIL REQUIRED
 STA TO STA RIGHT LEFT
 81132 - 81180 +8' -
 81116 - 81186 - 80'

RESETTING GUARD RAIL
 STA TO STA RIGHT LEFT
 83127 - 84116 89' 69'

NEW REIN CONCRETE PIPE CULVERTS REQUIRED
 STATION DIAM. LEV. CONC. STEEL
 31138 30" 48" 32 cy 50 lbs.

CULVERT REPAIRS REQUIRED
 STATION TYPE EXTENSION CONC. STEEL
 83173 24" 30x11.5' 27 cy 713 lbs.

PLAN
 DATE: 10/15/50
 DRAWN BY: J. W. HENNING
 CHECKED BY: J. W. HENNING
 PROJECT: DOE CHARGE
 SHEET: 7-80-30

DOE CHARGE
 B-1-30
 B-2-30
 DATE: 10/15/50
 DRAWN BY: J. W. HENNING
 CHECKED BY: J. W. HENNING
 PROJECT: DOE CHARGE
 SHEET: 7-80-30

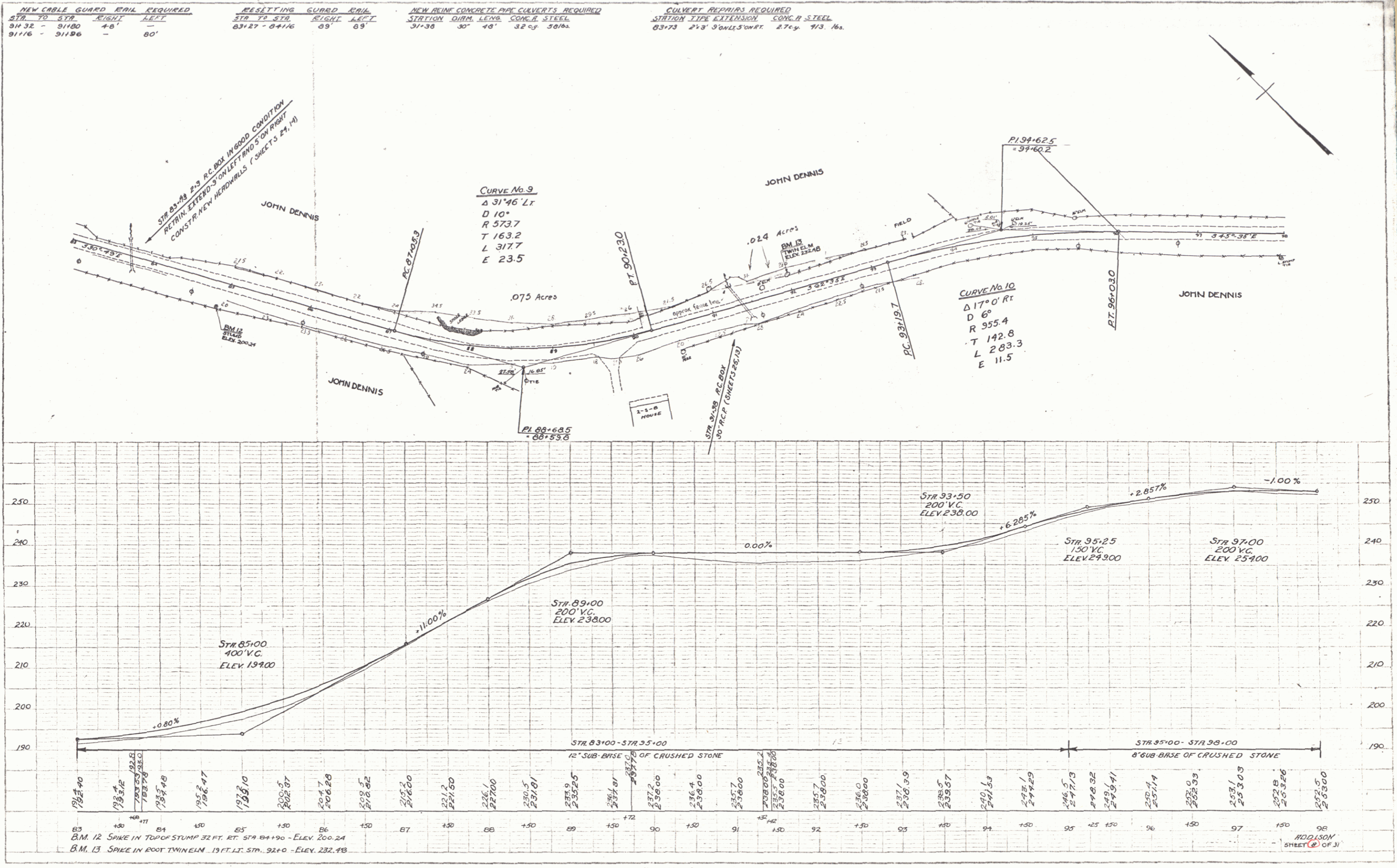
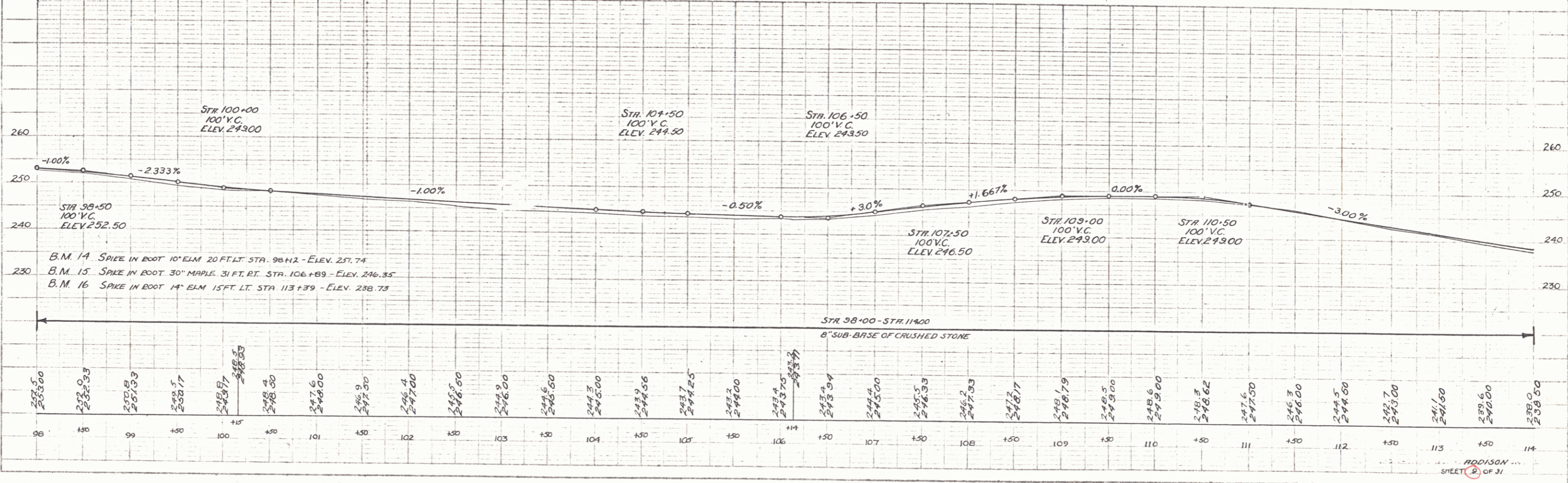
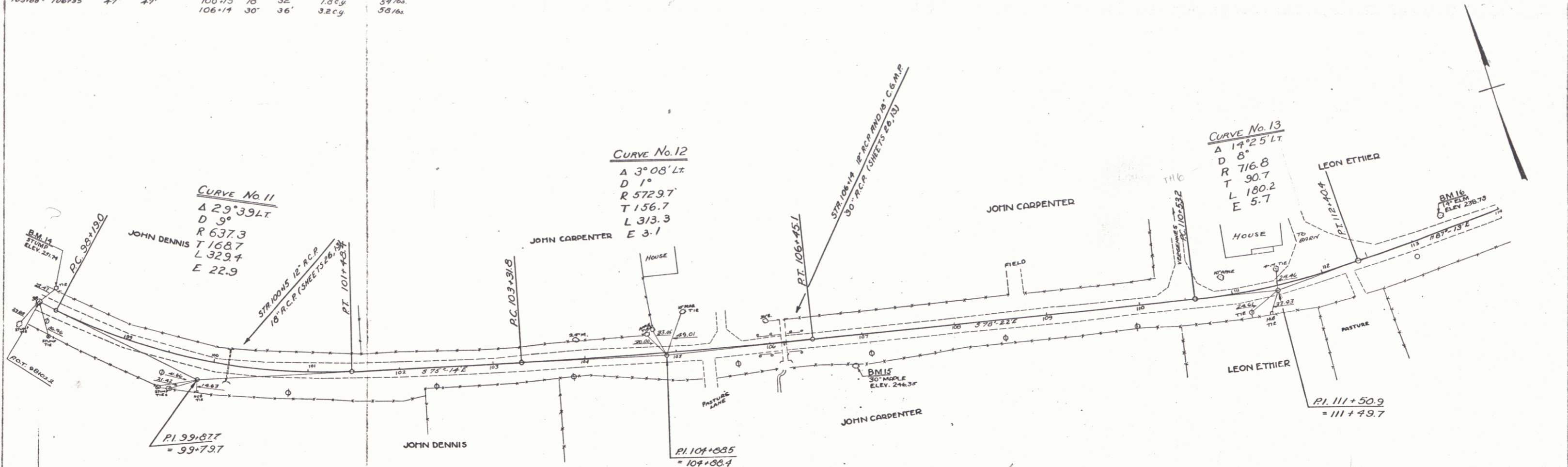


PLATE 111-111 REPROD. BY E. R. & E. S. STUBBS
 40 WEST 42ND ST. NEW YORK

RESETTING GUARD RAIL				NEW REIN. CONCRETE PIPE CULVERTS REQUIRED			
STA TO STA	RUGHT	ALLEY	STATION	DIAM	LENG.	CONC. R	REIN. STEEL
105+88	106+35	47'	47'	100+15	10'	36"	1.0 CY
				106+14	30'	36"	3.2 CY

DATE: 7-30-30
 BY: DOE CHANCE
 PLAN: 105+88 TO 114+00
 SHEET NO. 2 OF 31



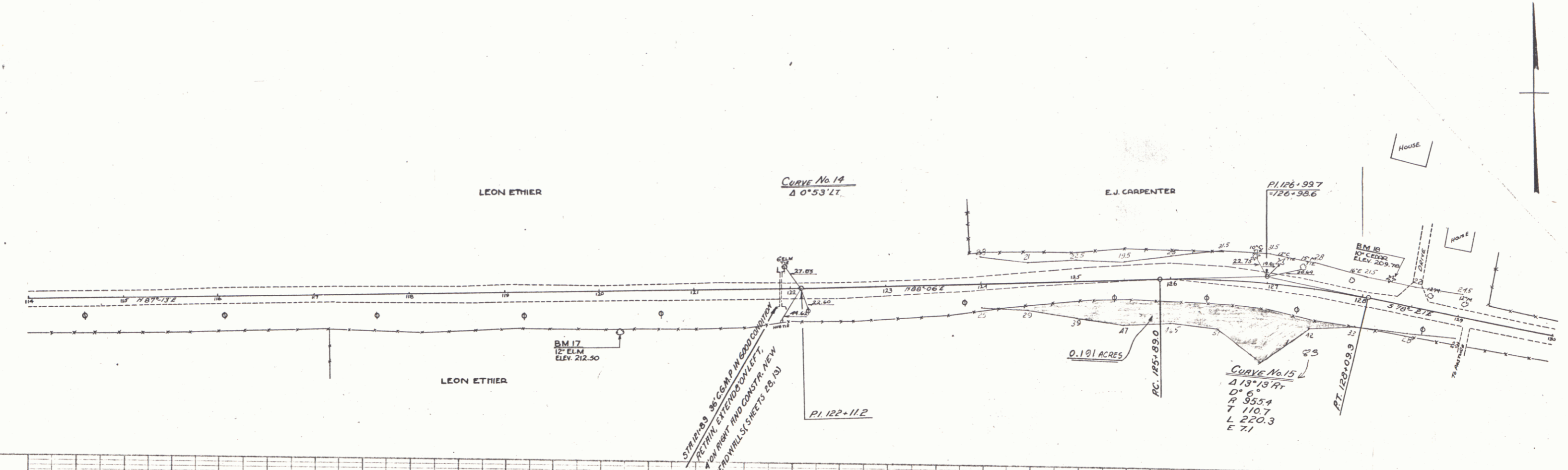
7

NEW WOOD GUARD RAIL REQUIRED
 CULV. STA. RIGHT LEFT
 121+89 2' -

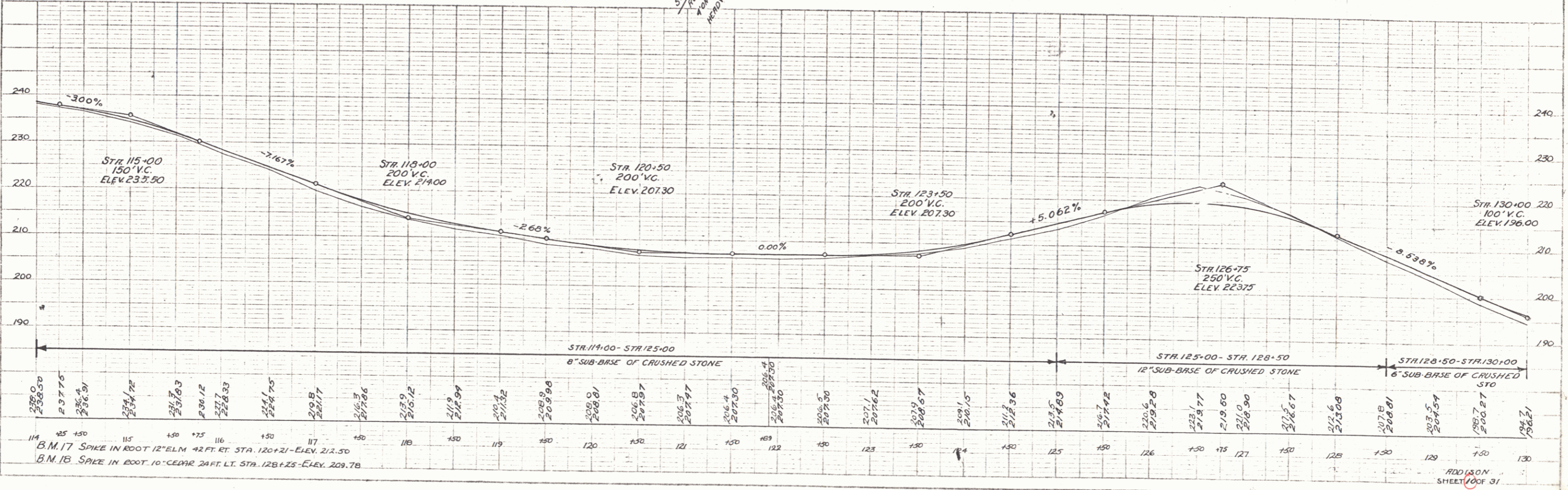
NEW CABLE GUARD RAIL REQUIRED
 STA TO STA RIGHT LEFT
 121+50-123+98 - 2.48'

CULVERT REPAIRS REQUIRED
 STATION TYPE TYPE OF PIPE R.C. OR C.C. RCINE STEEL
 121+83 36" CONCRETE 40" 5016A

DATE 7-30-30
 DRAWN BY
 CHECKED BY
 APPROVED BY



DATE 8-1-30
 DRAWN BY
 CHECKED BY



PLANNED BY
 DRAWN BY
 CHECKED BY

ADDISON
 SHEET 100 OF 31

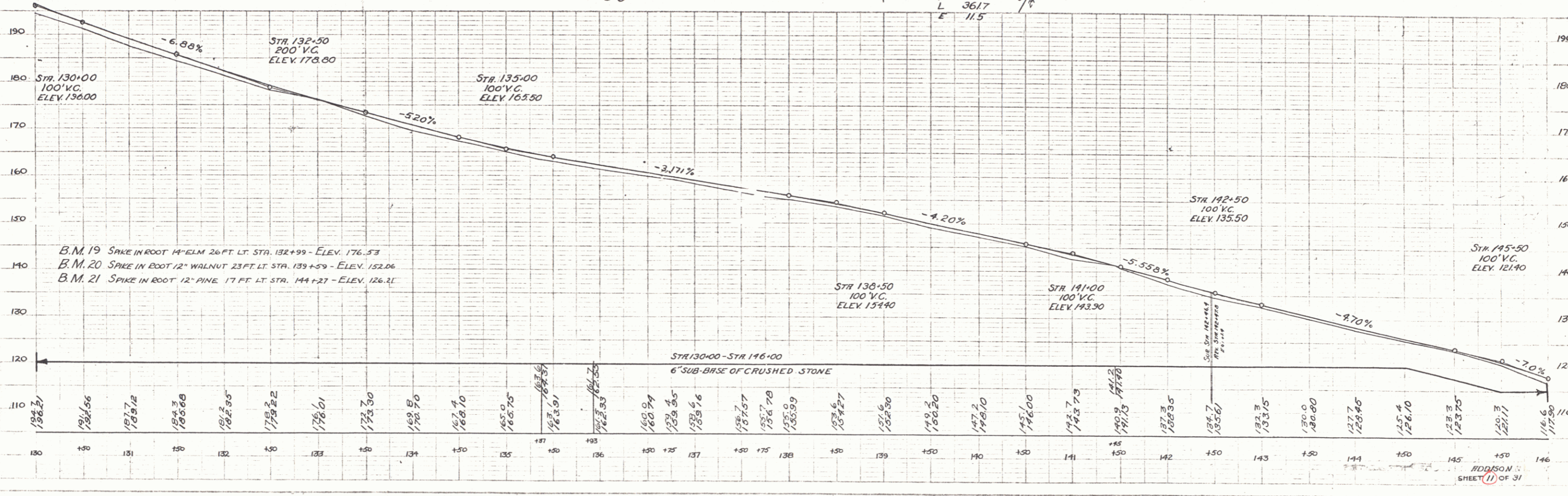
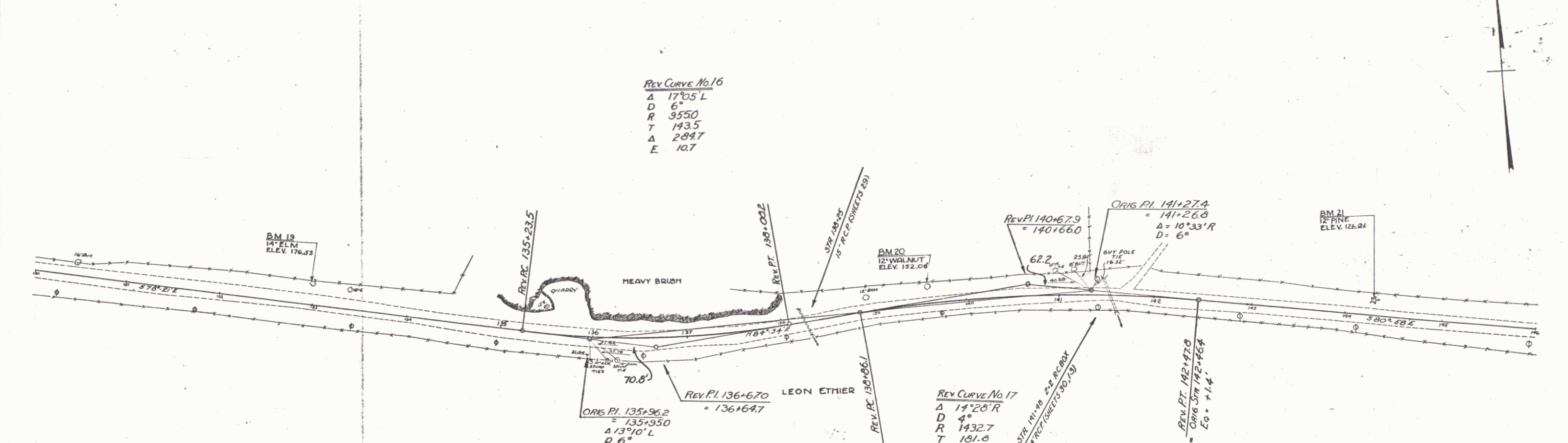
NEW WOOD GUARD RAIL REQUIRED			NEW REINFORCED CONCRETE PIPE CONCRETS REQUIRED					
CULV. STA.	RIGHT	LEFT	STATION	DIAM.	LENG.	CONCR. H.	CONC. C.	REINFL. STEEL
138+23	24'	24'	138+23	15"	32'	3E	2.3c.y.	3376 _a
141+45	24'	24'	141+45	24"	40'	2E	2.9c.y.	5716 _a

REV. CURVE No. 16
 Δ 17°05' L
 D 6'
 R 9550
 T 143.5
 Δ 289.7
 E 10.7

REV. CURVE No. 17
 Δ 14°20' R
 D 4'
 R 1432.7
 T 181.8
 L 361.7
 E 11.5

PLAN
 CHANCE
 7-20-30

CHANCE
 8-1-30
 8-2-30

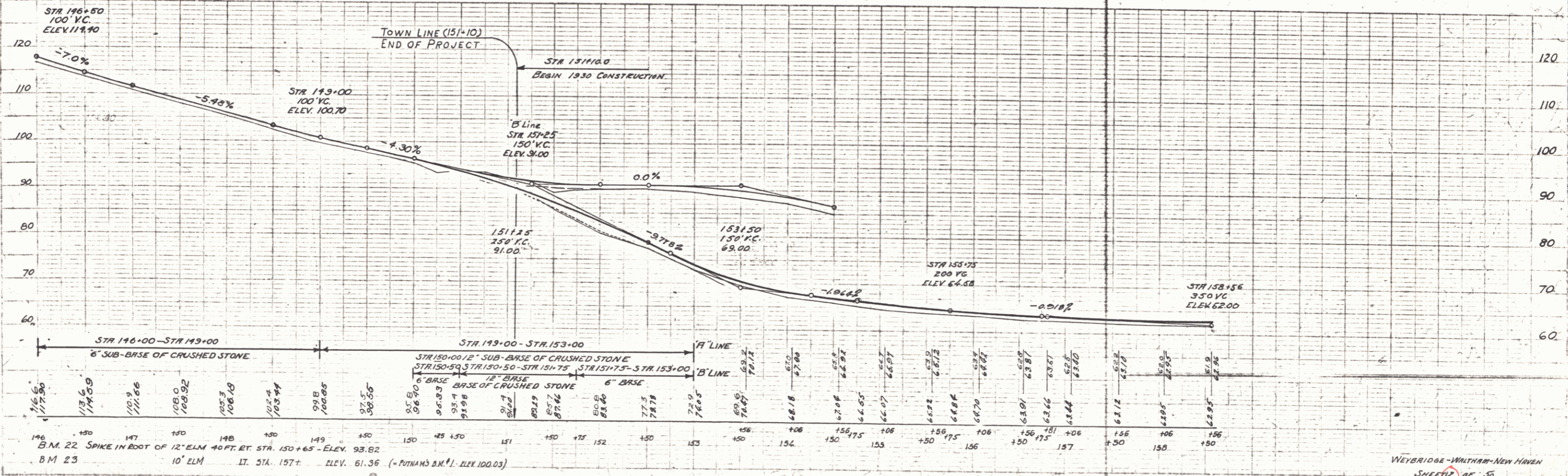
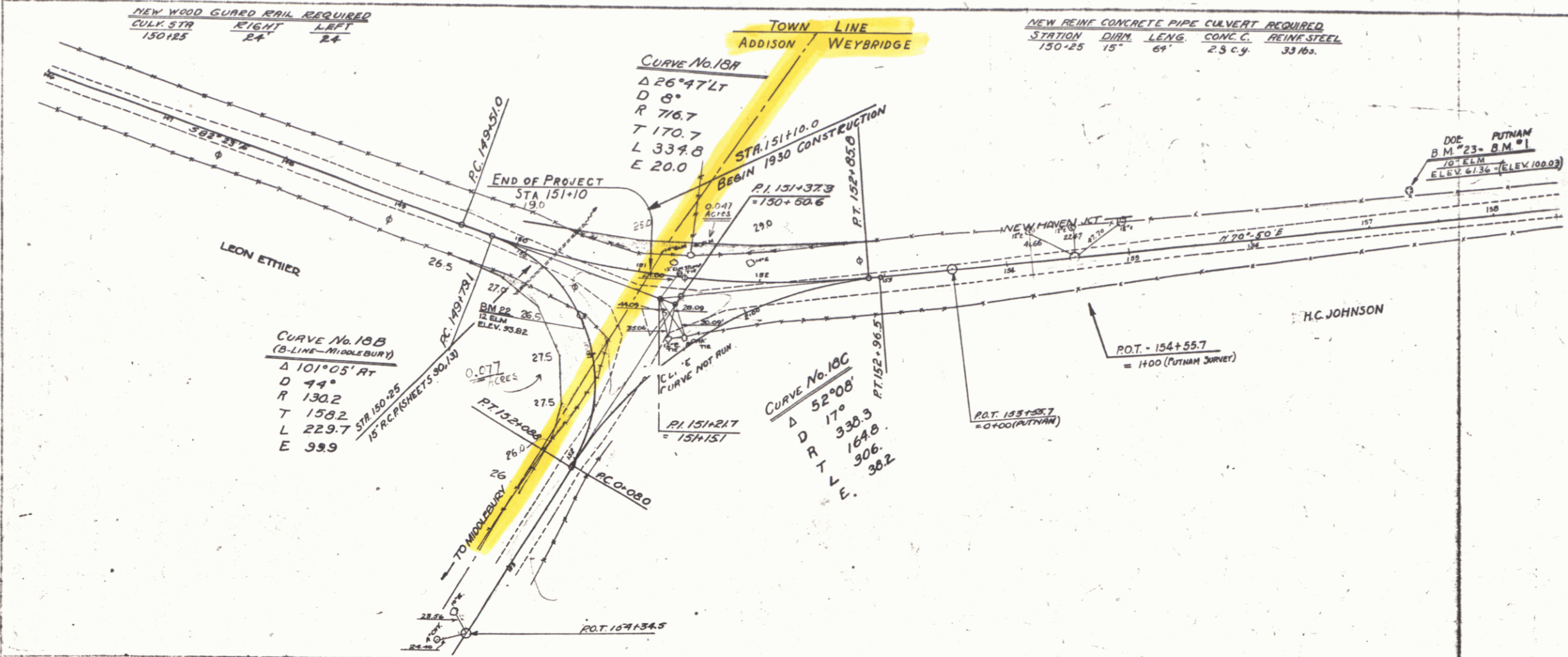


B.M. 19 SPIKE IN ROOT 14" ELM 26 FT. LT. STA. 132+99 - ELEV. 176.53
 B.M. 20 SPIKE IN ROOT 12" WALNUT 23 FT. LT. STA. 139+59 - ELEV. 152.06
 B.M. 21 SPIKE IN ROOT 12" PINE 17 FT. LT. STA. 144+27 - ELEV. 126.21

NEW WOOD GUARD RAIL REQUIRED
 CULV. STR. RIGHT LEFT
 130+25 24' 24'

NEW REIN. CONCRETE PIPE CULVERT REQUIRED
 STATION DIRM. LENG. CONC. REIN. STEEL
 130+25 15' 6" 2.5 c.y. 33 lbs.

FED. ROAD STATE DIST. NO. 1930 12 50
 VT. 1930 12 50



DOE CHANCE 7-8-30

DOE CHANCE 8-2-30