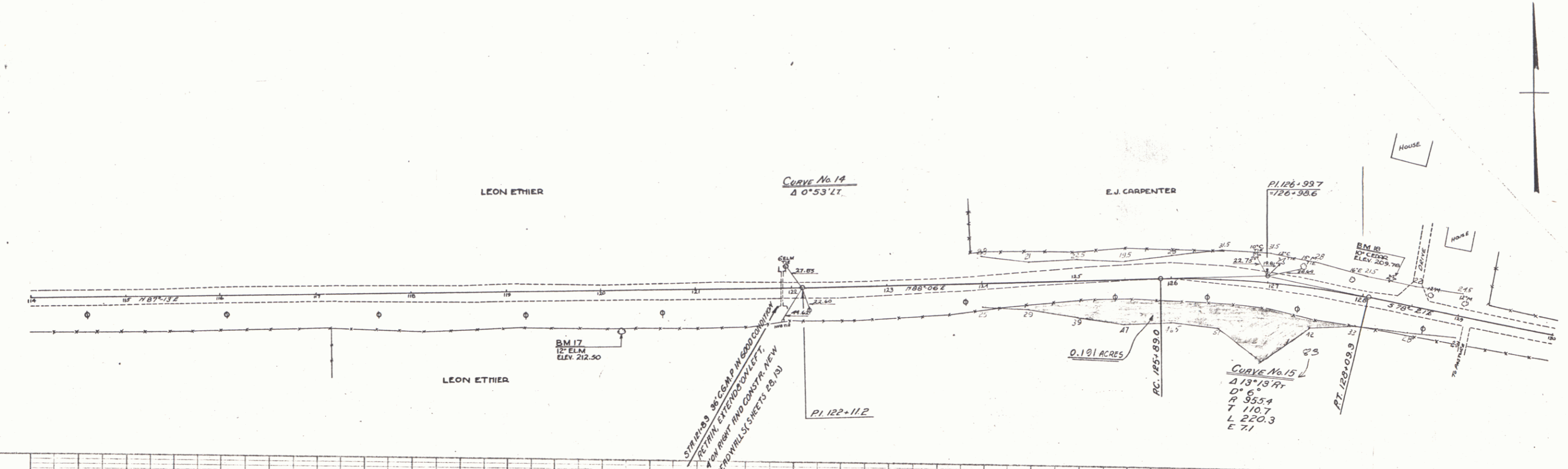
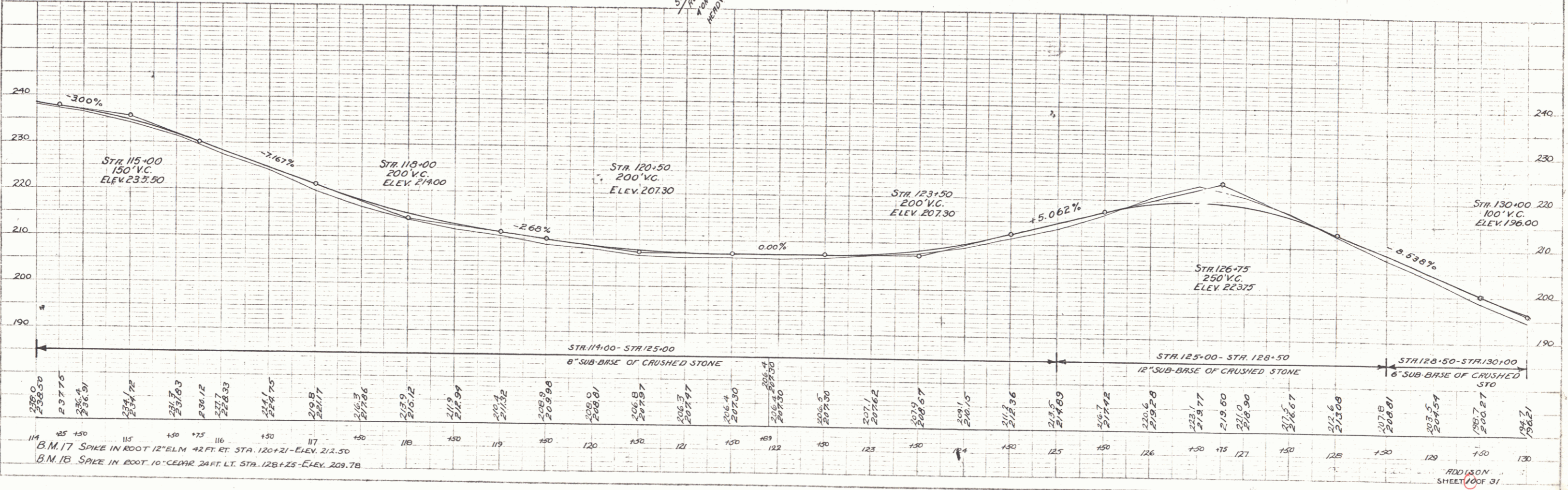


NEW WOOD GUARD RAIL REQUIRED  
 CULV. STA. RIGHT LEFT  
 121+89 2+ -  
 NEW CABLE GUARD RAIL REQUIRED  
 STA TO STA RIGHT LEFT  
 121+50-123+98 - 2.48'  
 CULVERT REPAIRS REQUIRED  
 STATION TYPE TYPE OF PIPE R.C. OR RCINE STEEL  
 121+83 36" CONCRETE PIPE 40x4 5016A

PLAN  
 DATE  
 7-30-30  
 DRAWN BY  
 CHECKED BY  
 APPROVED BY



PROFILE  
 DATE  
 8-1-30  
 DRAWN BY  
 CHECKED BY  
 APPROVED BY



B.M. 17 SPIKE IN ROOT 12" ELM 42 FT. RT. STA. 120+21 - ELEV. 212.50  
 B.M. 18 SPIKE IN ROOT 10" CEDAR 24 FT. LT. STA. 128+25 - ELEV. 209.78

PLANNED BY  
 DRAWN BY  
 CHECKED BY  
 APPROVED BY

ADDISON  
 SHEET 100 OF 31