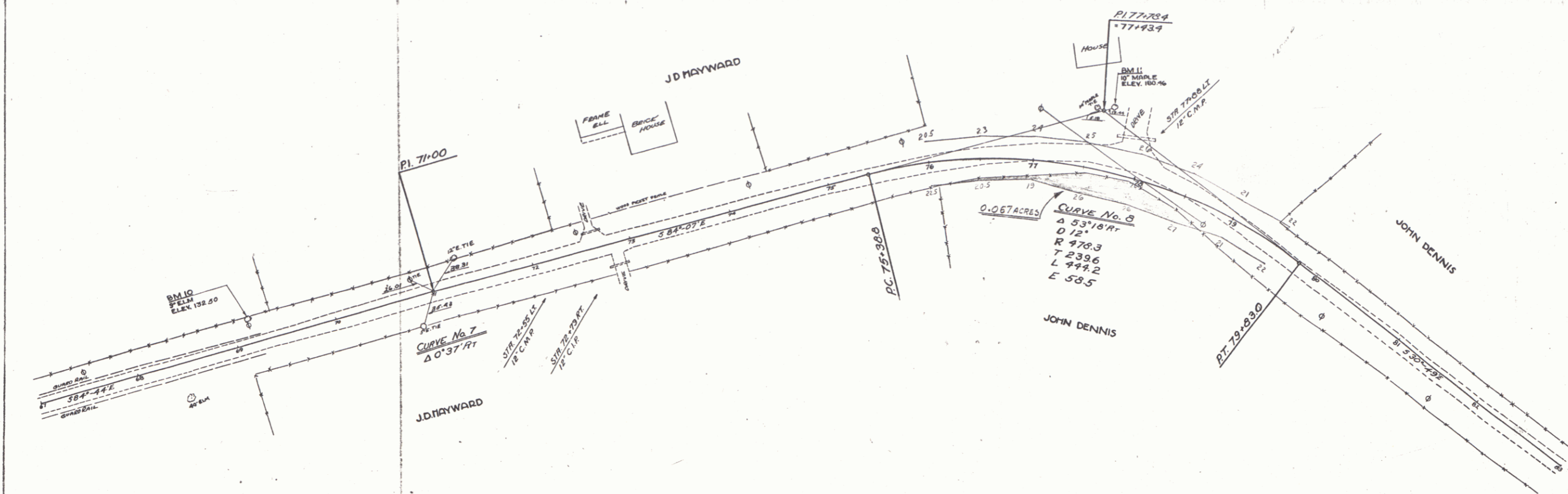
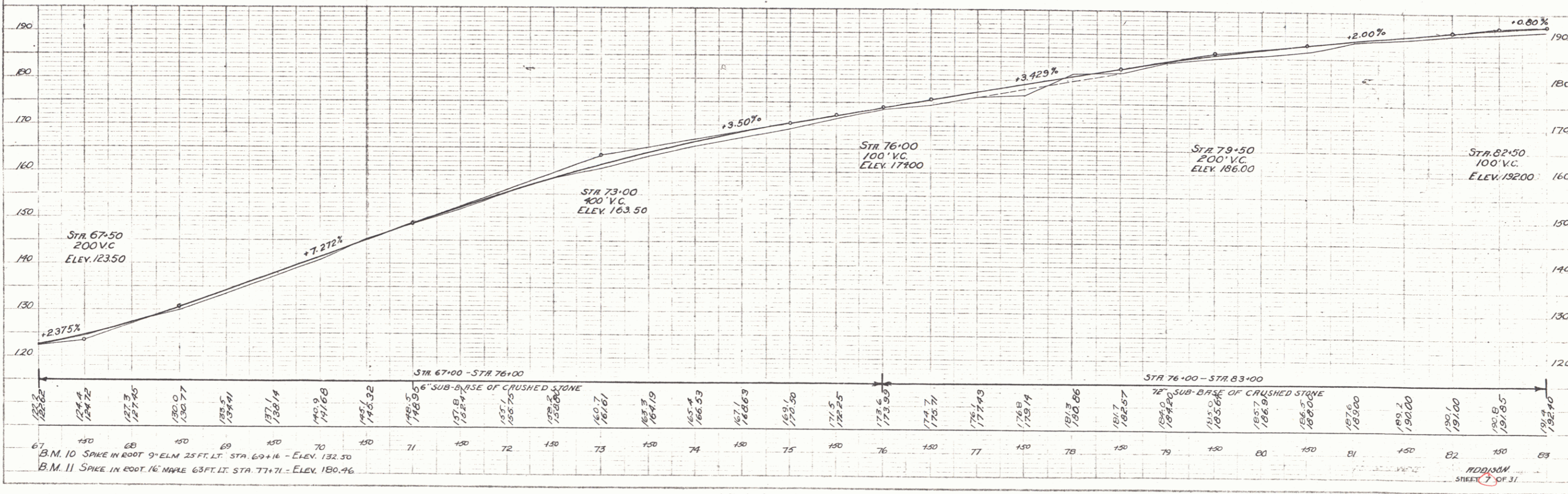


RESETTING GUARD RAIL
 STA TO STA EIGHT MILE
 67+00 - 69+25 22.5' 22.5'

PLAN
 DATE 11/11/57
 DRAWN BY J. W. HARRIS
 CHECKED BY D. C. CRACE
 7-23-58



PROFILE
 DATE 11/11/57
 DRAWN BY J. W. HARRIS
 CHECKED BY D. C. CRACE
 8-1-58
 8-2-58



B.M. 10 SPIKE IN ROOT 9" ELM 25 FT. LT. STA. 69+16 - ELEV. 132.50
 B.M. 11 SPIKE IN ROOT 16" MAPLE 65 FT. LT. STA. 77+71 - ELEV. 180.46

ADDISMAN
 SHEET 7 OF 31

PLATE 1 - ELEV. PROFILE OF ROAD & CURVES
 ELEV. & CURVE DATA

5