

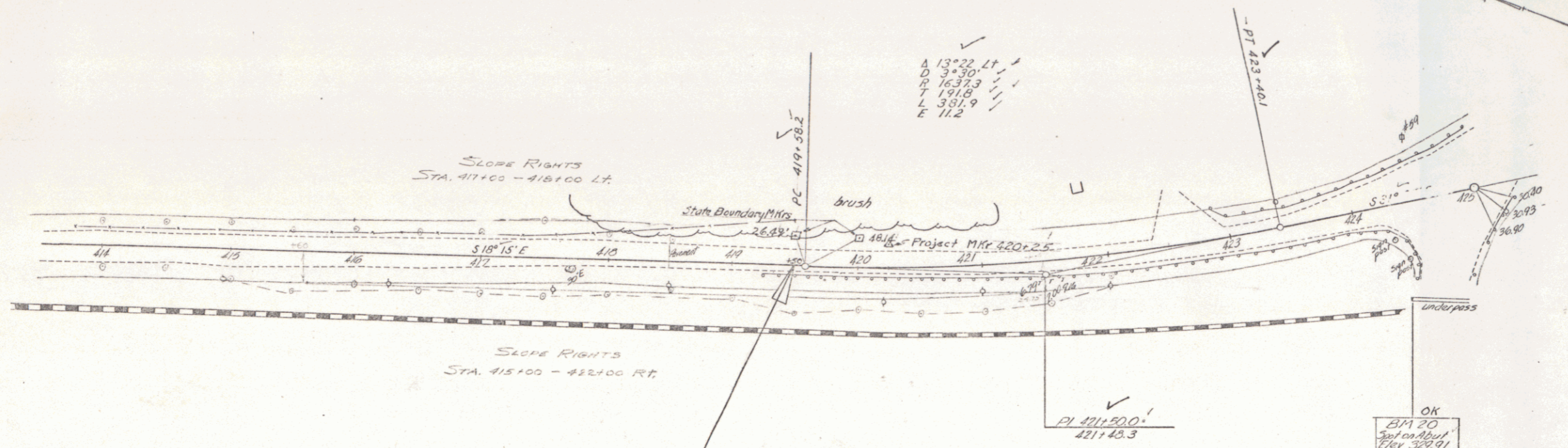
Two Cable Guard Rail
 LT
 422+72 - 425+54 419+10 - 424+40'

Construct Approaches
 419+50 - 424+25'
 422+60 LT

Removal and Disposal
 of present guard rail

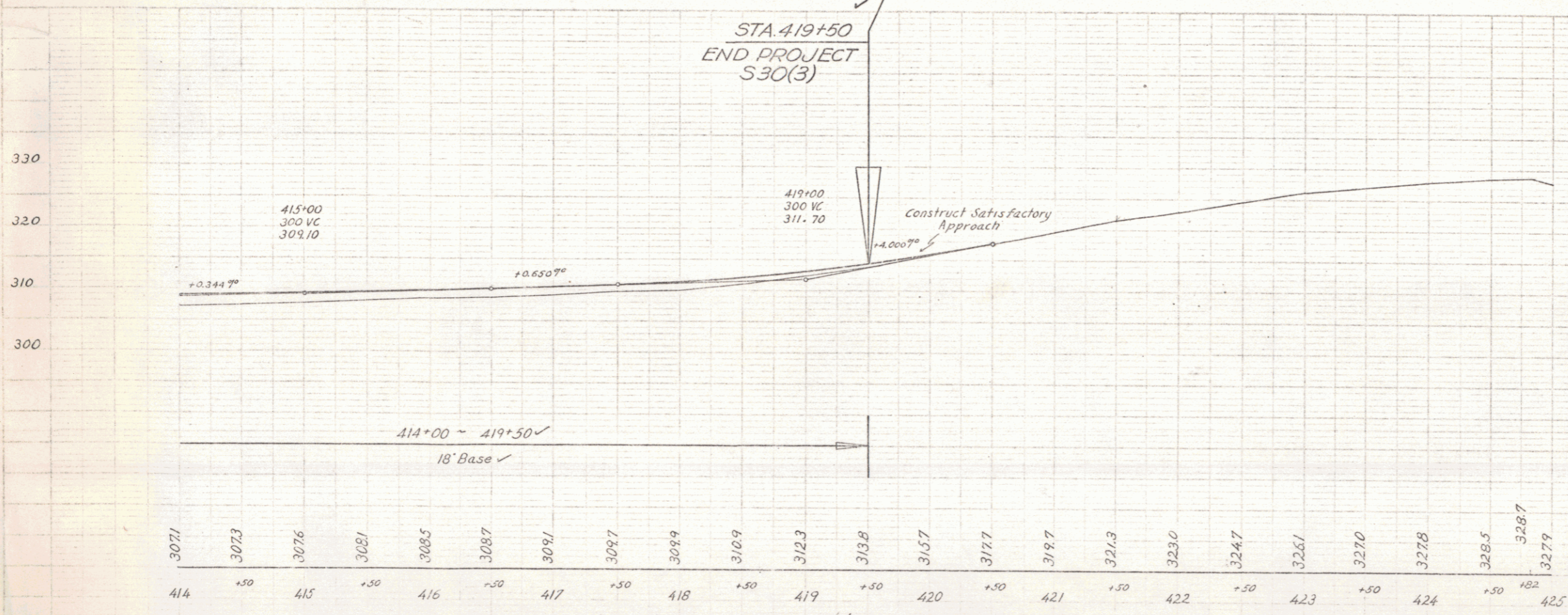
419+26 - 424+50 RT.
 422+90 - 425+77 LT.

Scale
 1" = 40'
 1" = 20'



A 13° 22' LT
 D 3+30'
 R 16.373
 L 191.8
 L 351.9
 E 11.2

STA. 419+50
 END PROJECT
 S30(3)



BM # 20 Spot on overpass abutment 76 ft sta. 424+33 Elevation 3299'

Jerardo Richmond
 Hy. S. No. 35(3)
 Sheet 18 of 20