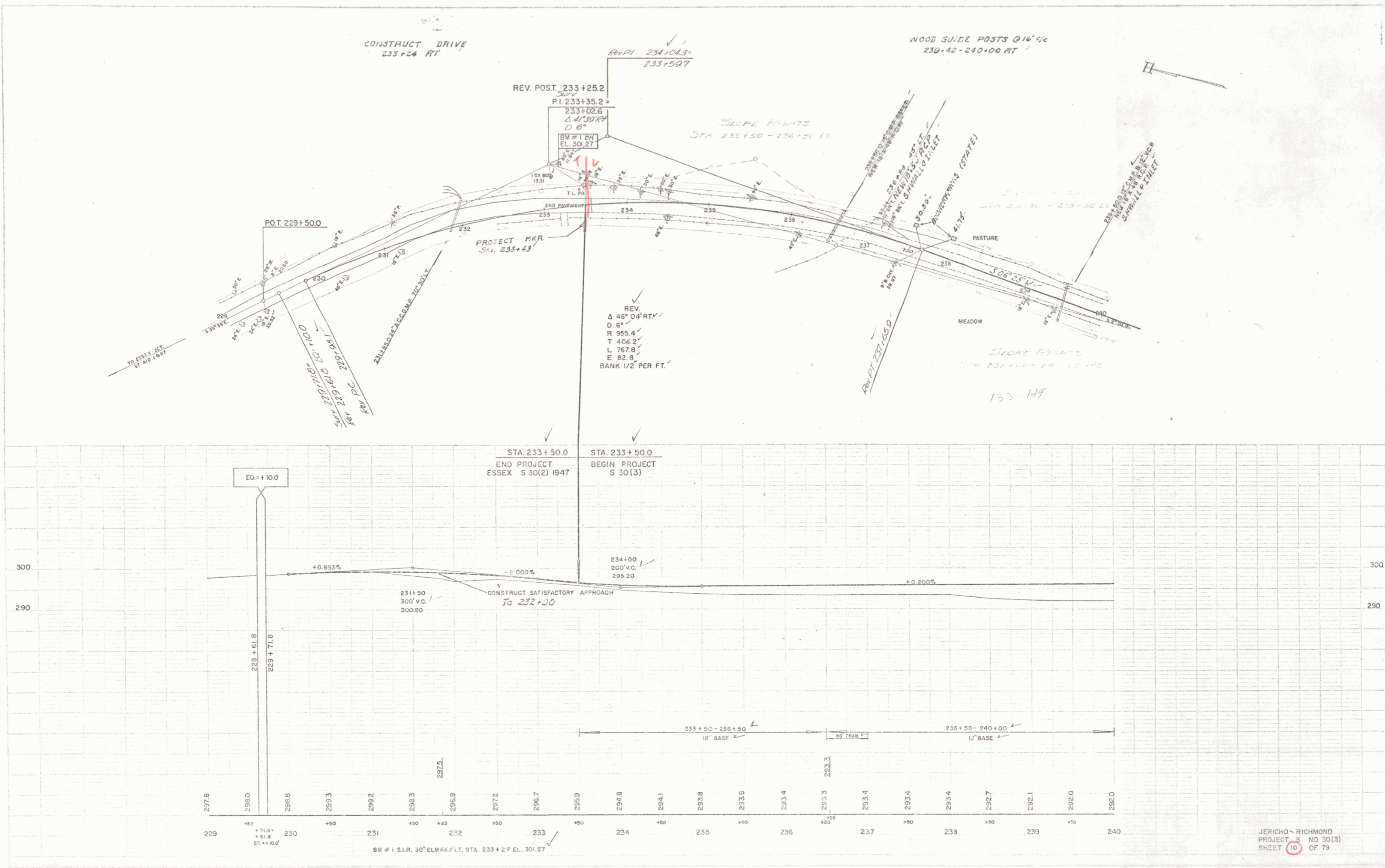




11/24  
 10/24  
 12/24  
 PALMER  
 JR.  
 TRACED

11/54  
 10/54  
 10/55  
 PALMER  
 JR.  
 TRACED



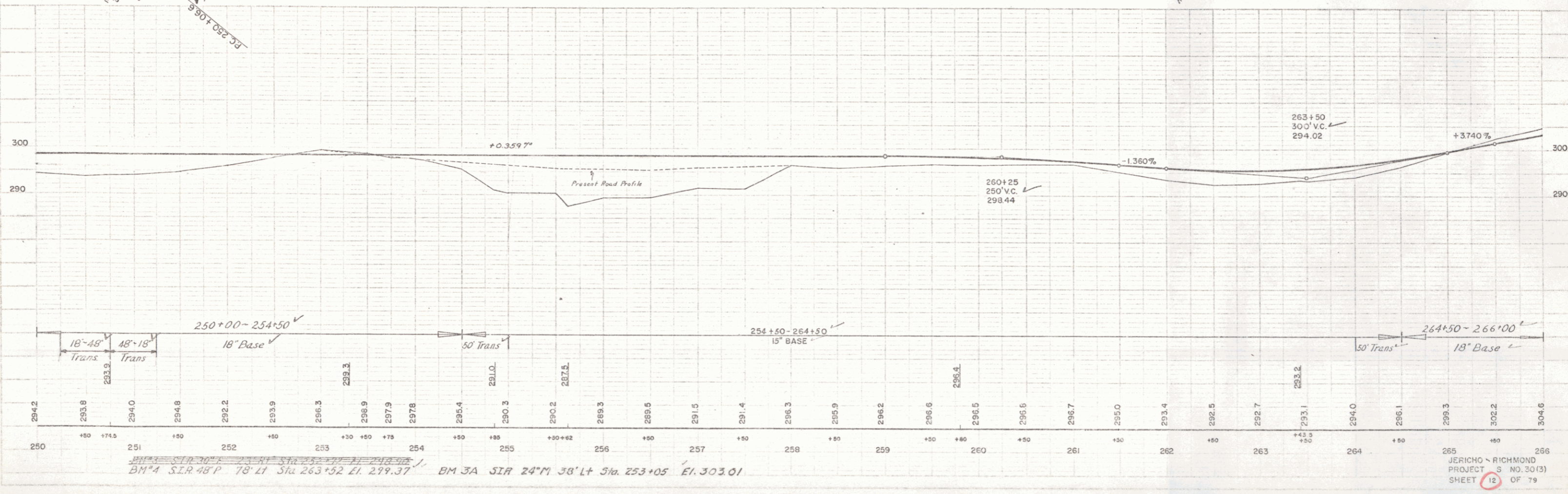
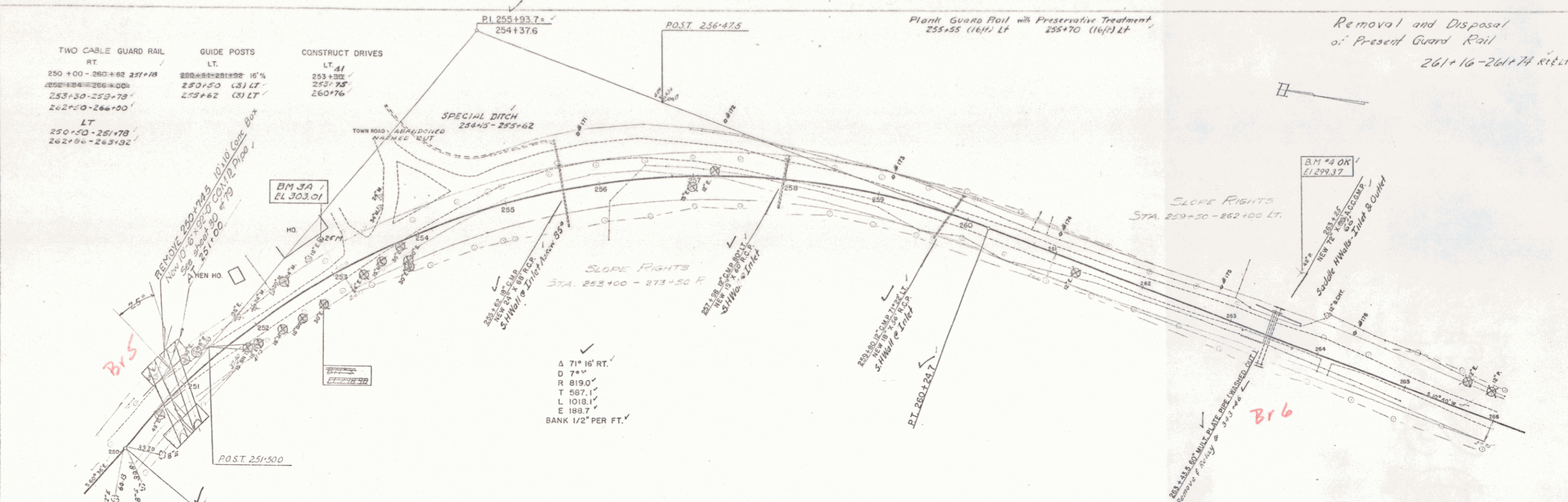
JERICO - RICHMOND  
 PROJECT NO. 30(3)  
 SHEET 10 OF 79



TWO CABLE GUARD RAIL  
RT  
250+00-260+00 251+18  
250+00-260+00  
253+30-253+78  
262+50-266+00  
LT  
250+50-251+78  
262+60-263+02

GUIDE POSTS  
LT  
250+70 (31) LT  
253+62 (31) LT

CONSTRUCT DRIVES  
LT  
253+30E  
253+75E  
260+76E



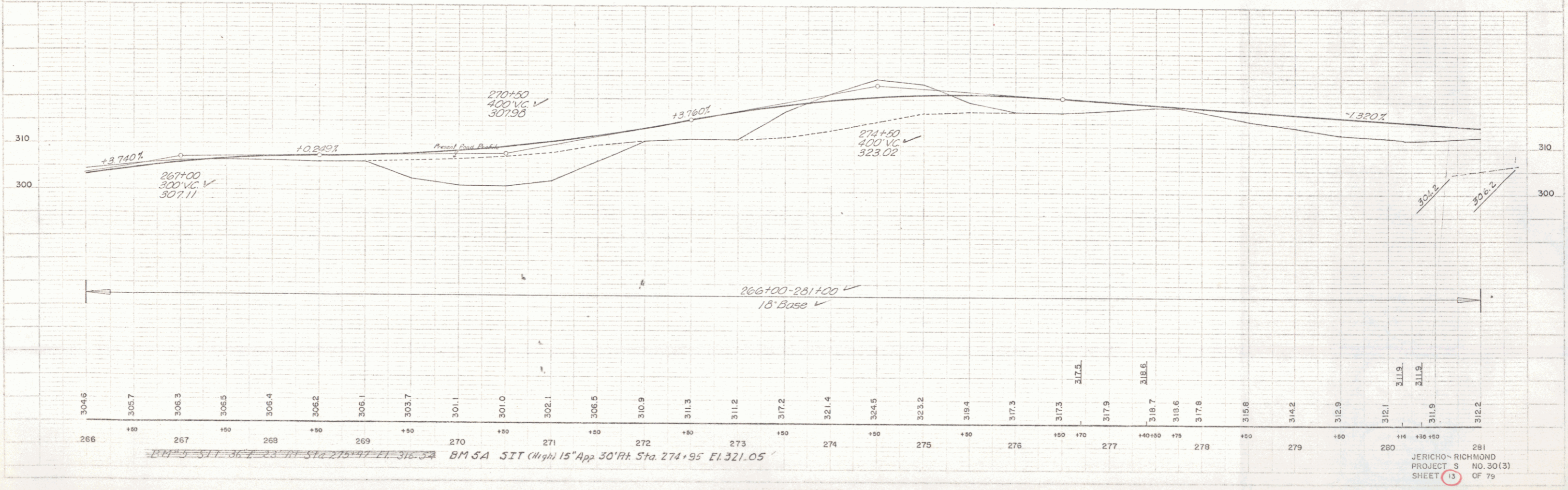
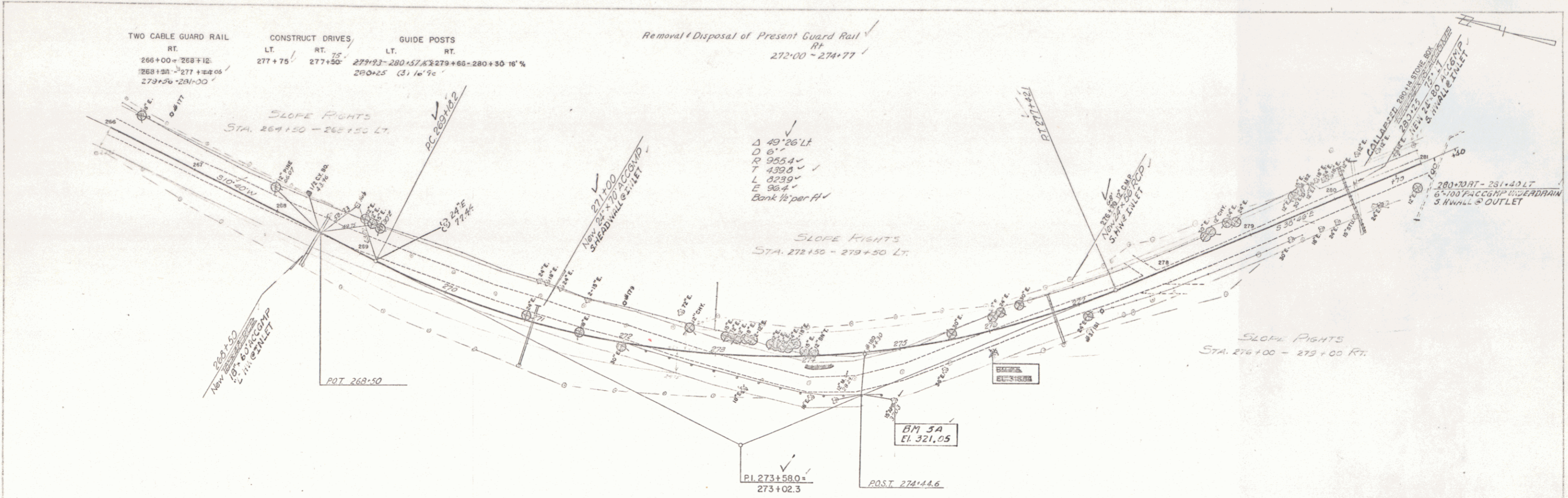
11/74  
12/74  
PALMER  
SCRIBNER  
TRAZED

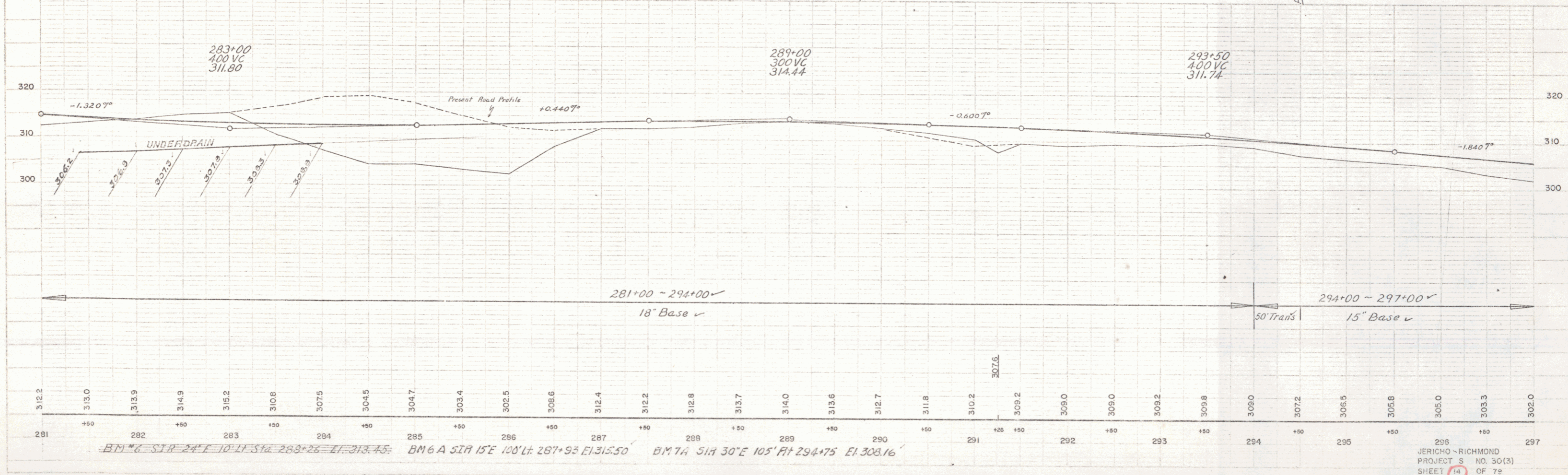
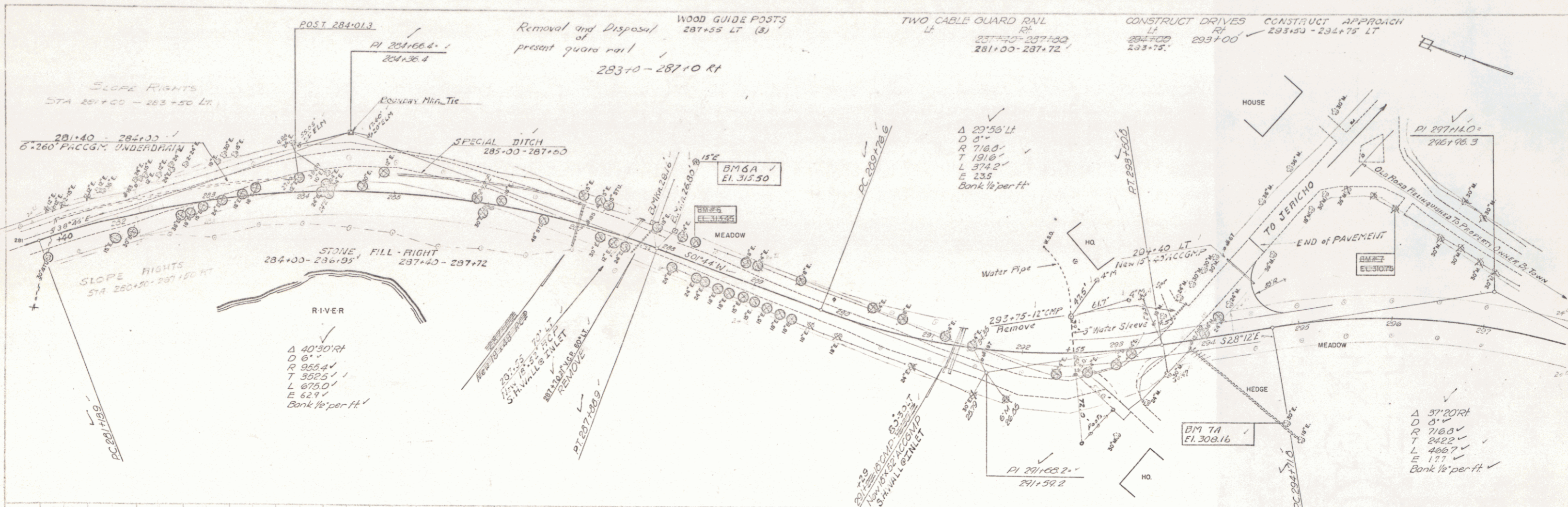
11/74  
12/74  
PALMER  
SCRIBNER  
TRAZED

BM 3A SIR 24' M 30' LT Sta. 253+05 El. 303.01

255 JERICHO - RICHMOND  
PROJECT S NO. 30(3)  
SHEET 12 OF 79

11/24  
 12/24  
 1/85  
 PALMER  
 SCHMIDT  
 TRACED  
 IN.



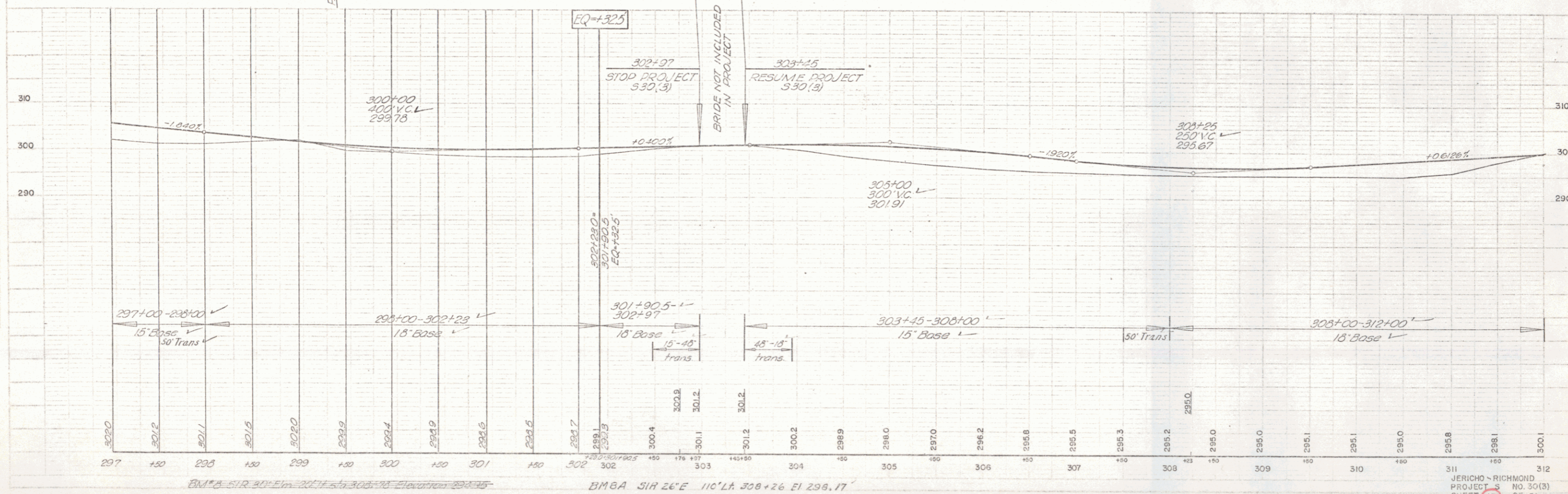
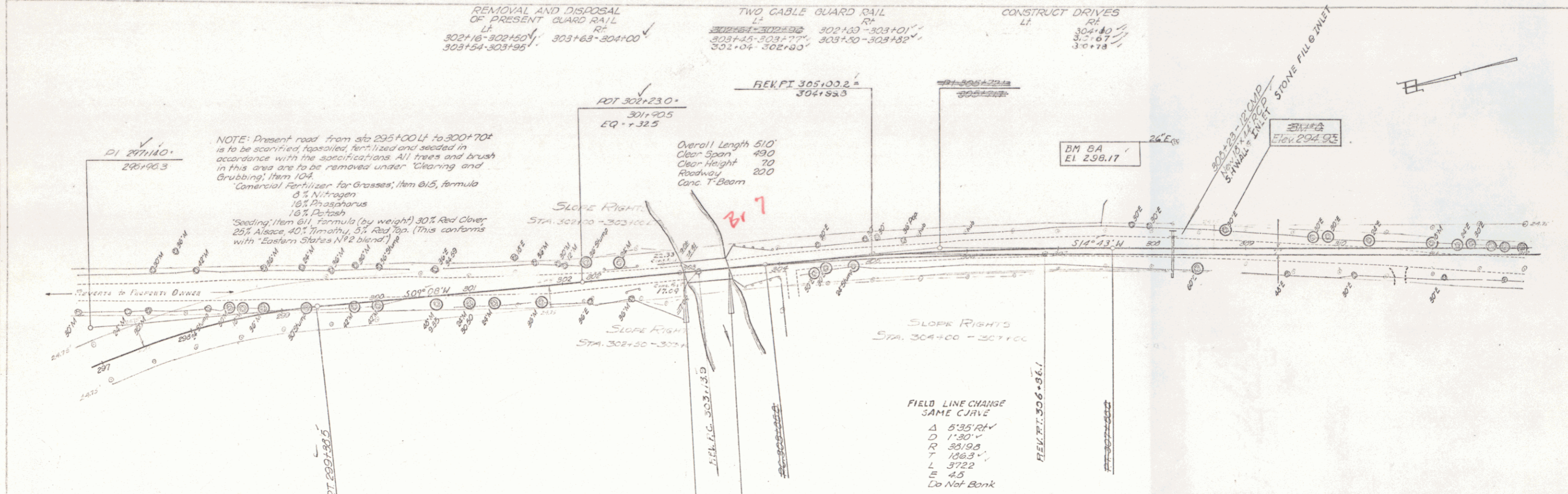


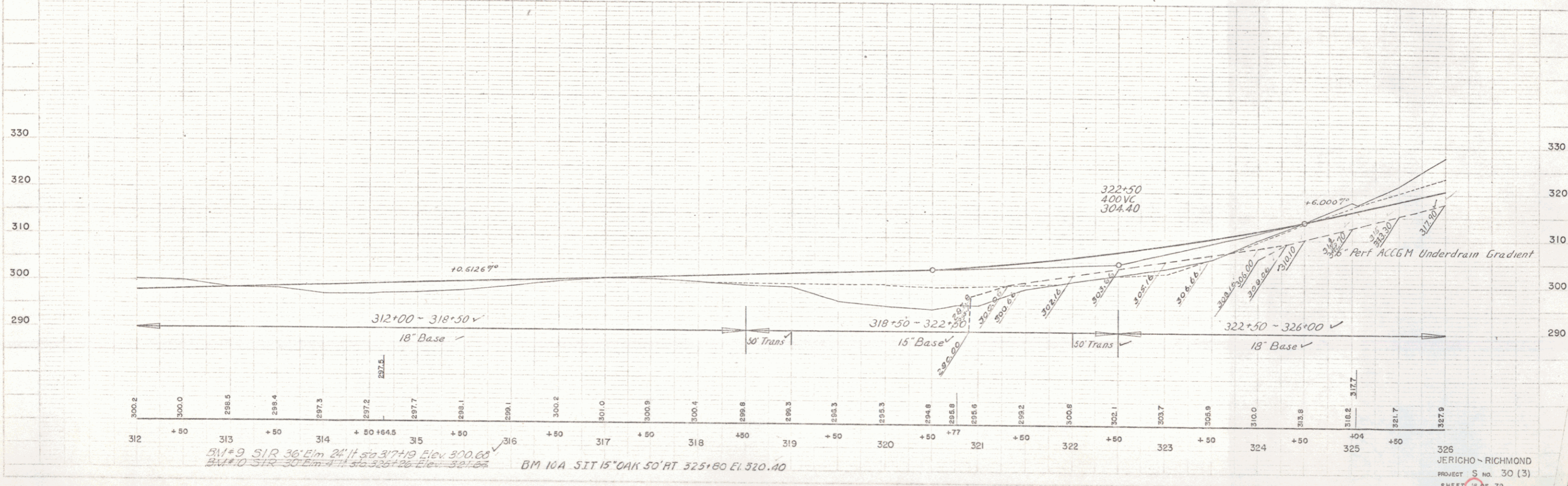
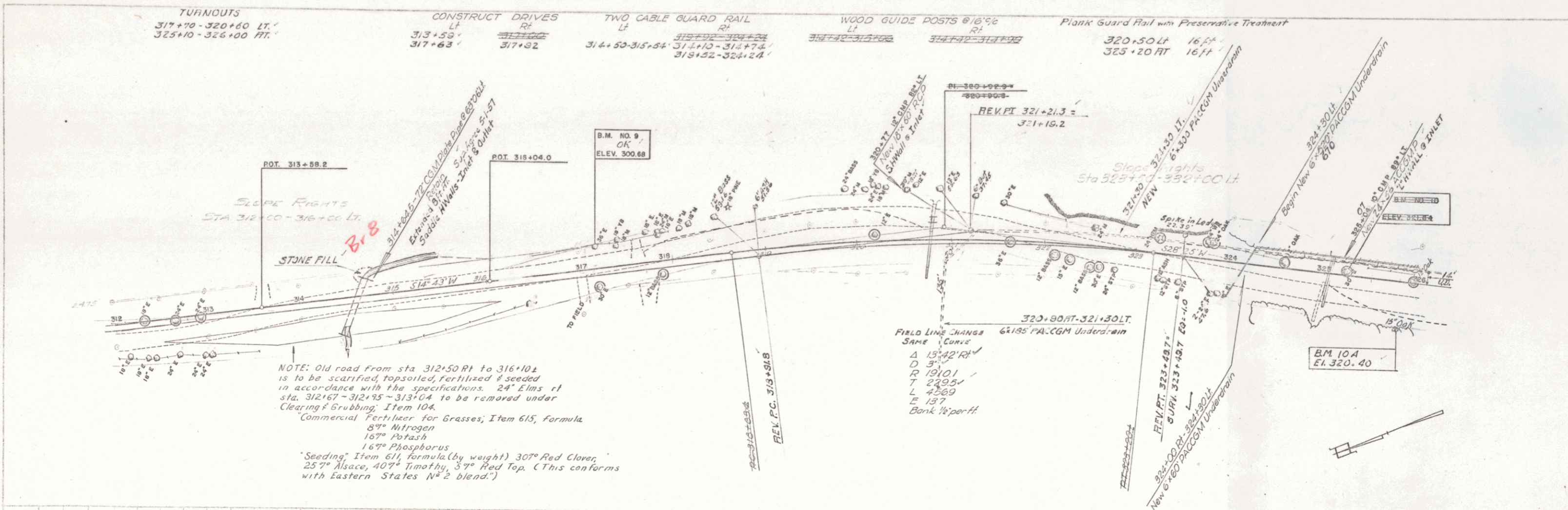
PLAN  
 SCALE 1" = 40'  
 DATE 11/25

PROFILE  
 SCALE 1" = 40'  
 DATE 11/25

BM 6 STA 24° E 10' LT Sta 283+26 El. 313.45  
 BM 6 A STA 15° E 100' LT 287+93 El. 315.50  
 BM 7 A STA 30° E 105' RT 294+75 El. 308.16

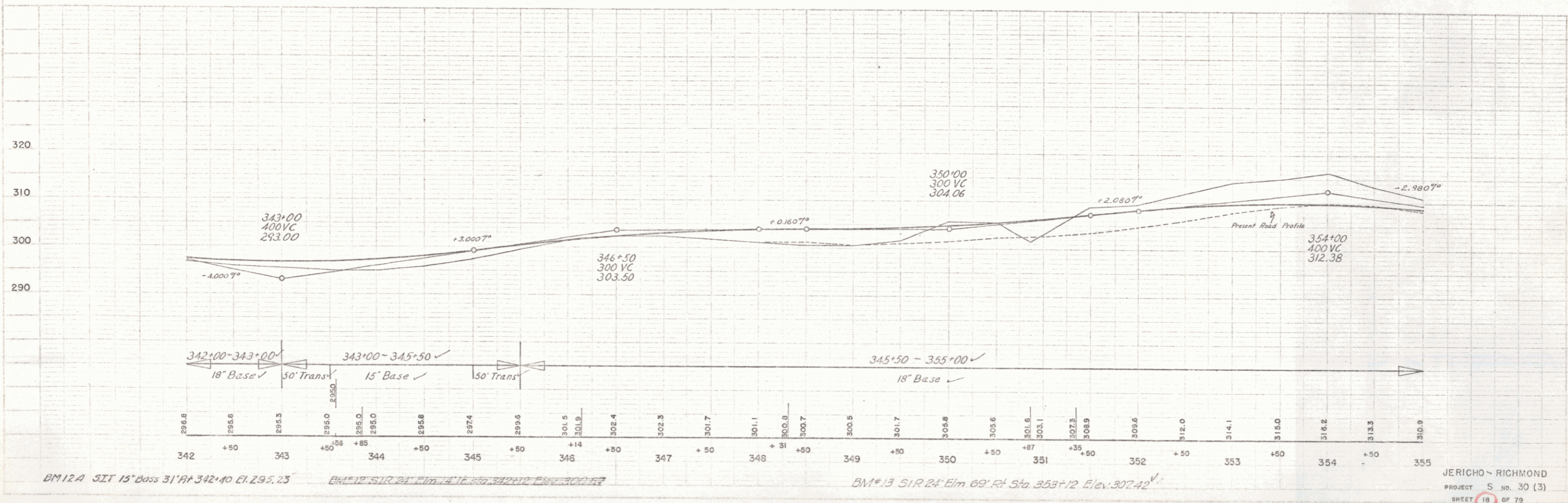
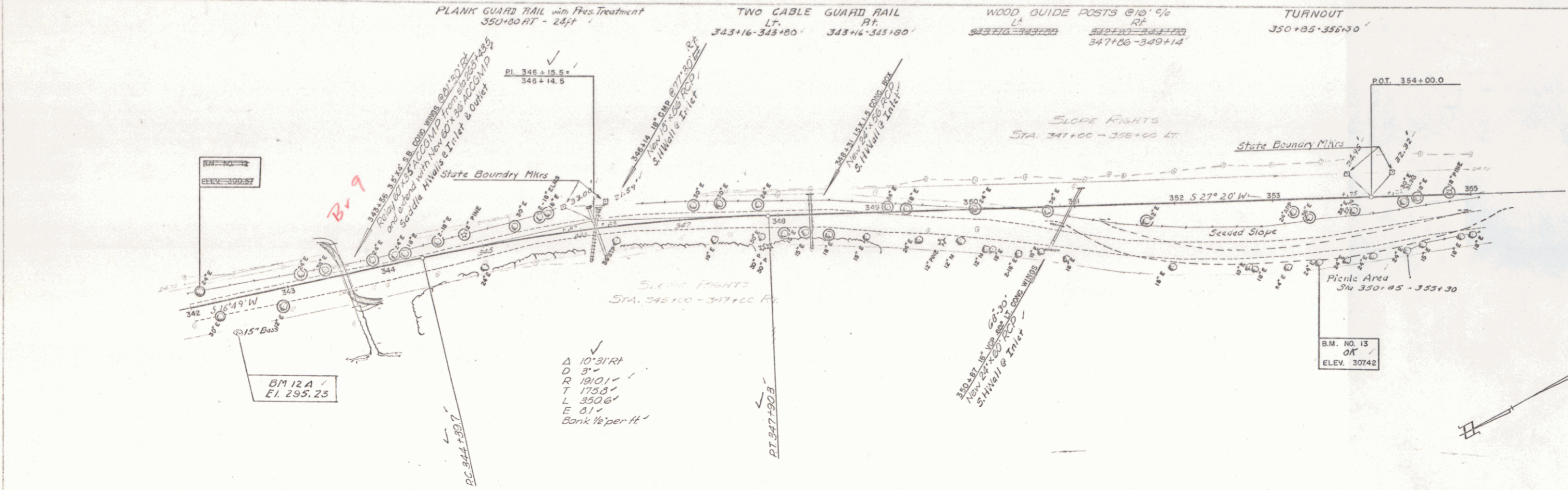
296  
 JERICHO - RICHMOND  
 PROJECT NO. 30(3)  
 SHEET 14 OF 72





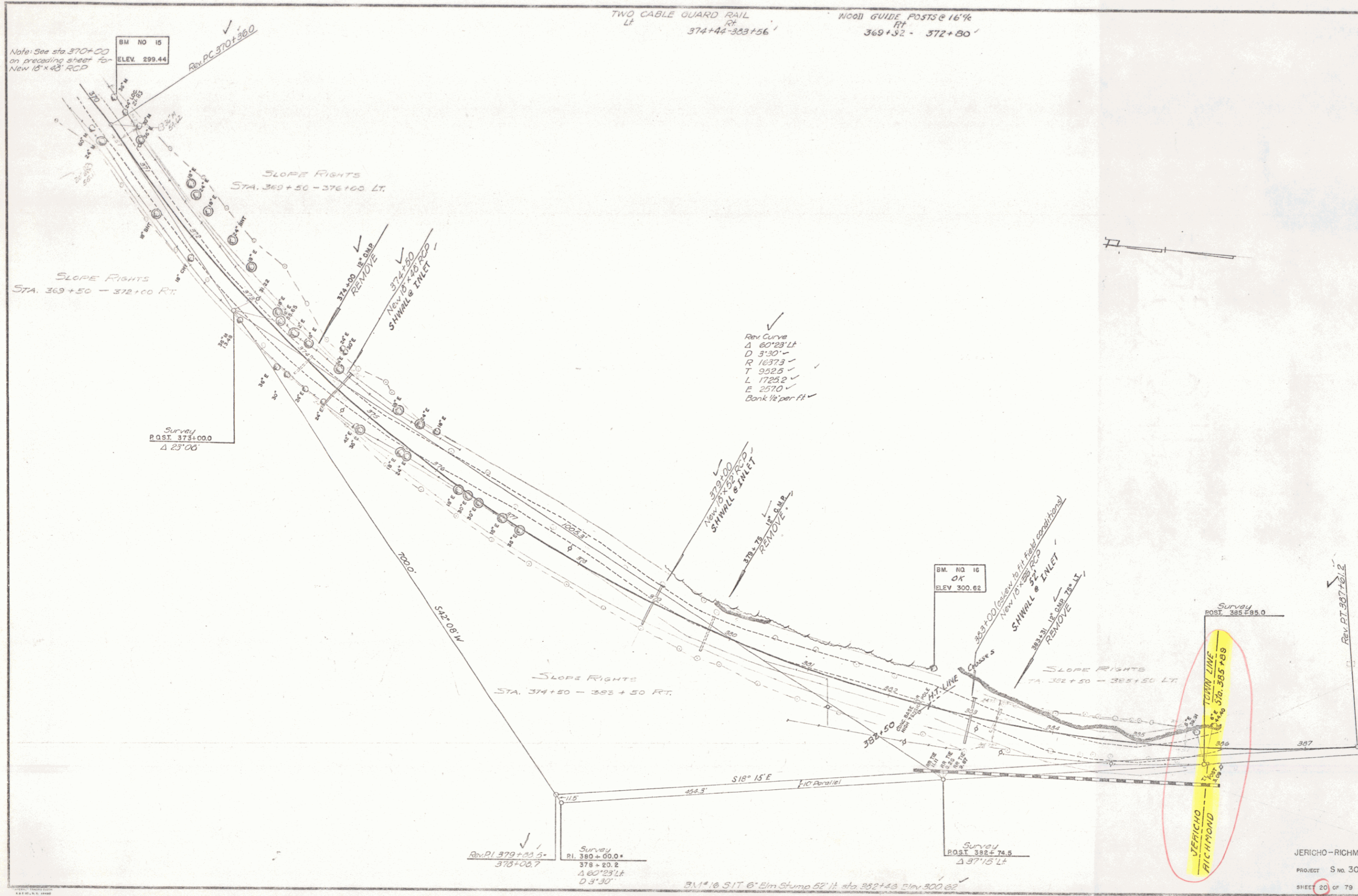
JERICO - RICHMOND  
 PROJECT S No. 30 (3)  
 SHEET 18 OF 73





BM 12A SIT 15" Base 31' RT Sta 342+40 Elev 295.23  
 BM 12 SIR 24" Elm 4" 1/2 Sta 342+12 Elev 302.42  
 BM 13 SIR 24" Elm 69' RT Sta 353+12 Elev 307.42





Note: See sta 370+00 on preceding sheet for New 18" x 48" RCP

BM NO 15  
ELEV. 299.44

TWO CABLE GUARD RAIL  
LT RT  
374+44-383+56'

WOOD GUIDE POSTS @ 16' 1/4  
RT  
369+32 - 372+80'

SLOPE RIGHTS  
STA. 360+50 - 376+00 LT.

SLOPE RIGHTS  
STA. 369+50 - 372+00 RT.

Survey  
POST 373+00.0  
Δ 23'00"

Rev Curve  
Δ 60°23' LT  
D 3'30"  
R 16373  
T 9925  
L 1725.2  
E 2570  
Bank 1/2 per ft

BM NO 16  
OK  
ELEV 300.62

SLOPE RIGHTS  
STA. 374+50 - 382+50 RT.

SLOPE RIGHTS  
STA. 382+50 - 385+50 LT.

TOWN LINE  
RICHMOND  
Sta. 385+89

Rev. PI 379+00  
376+08.7

Survey  
PI 380+00.0  
378+20.2  
Δ 60°23' LT  
D 3'30"

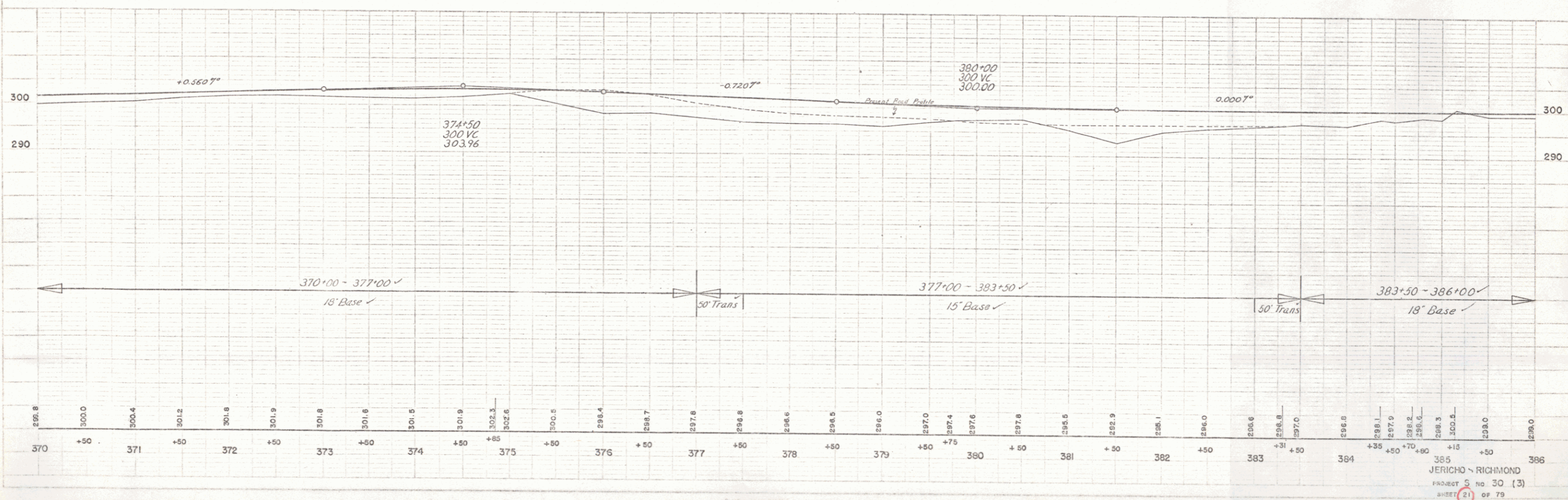
Survey  
POST 382+74.5  
Δ 37'15" LT

BM # 16 5 1/2 Elm Stump 52' ft. abo 382+43 Elev 300.62'

JERICO-RICHMOND  
PROJECT S no. 30 (3)  
SHEET 20 OF 79

PLAN  
 DATE  
 DRAWN BY  
 CHECKED BY  
 PROJECT NO.

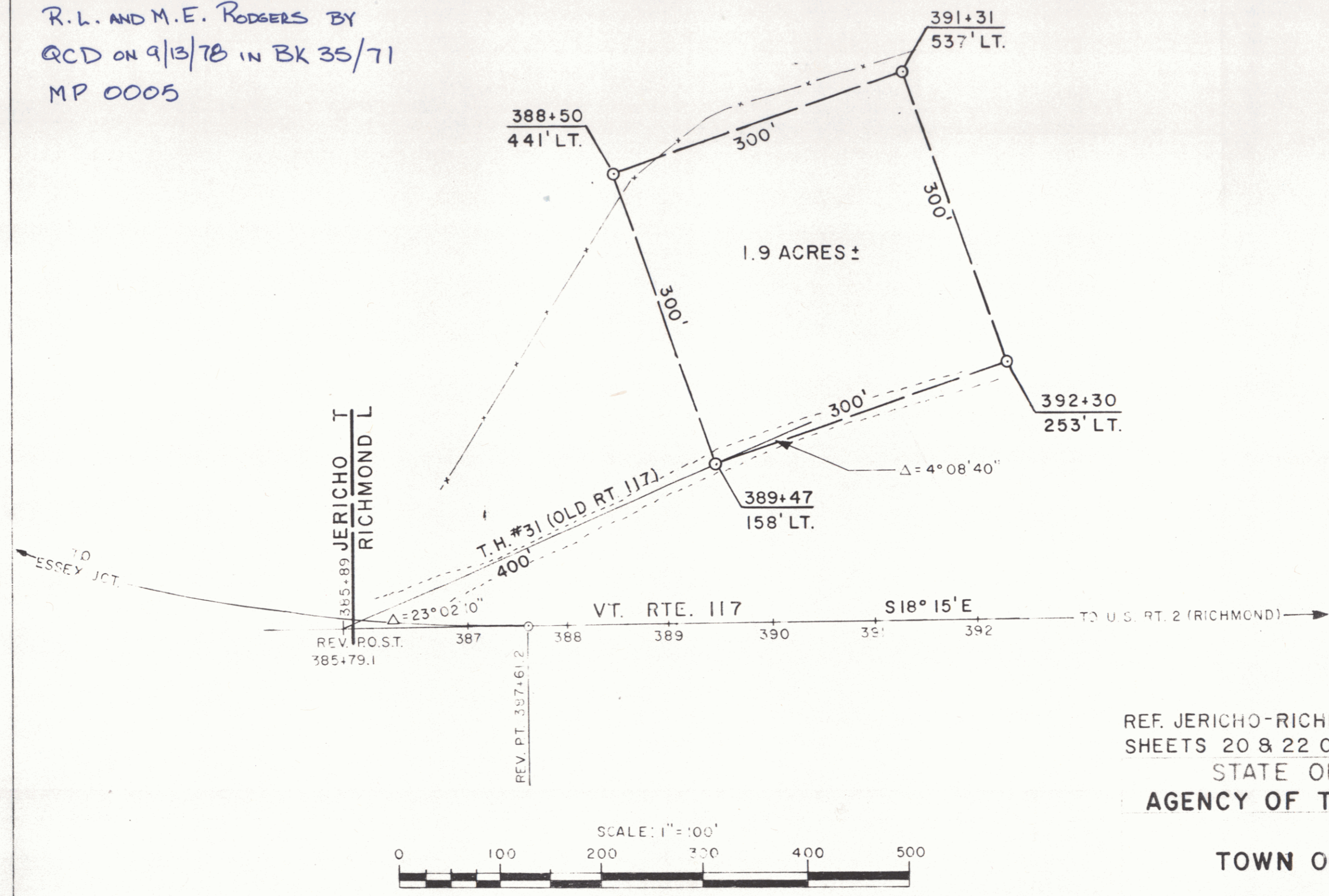
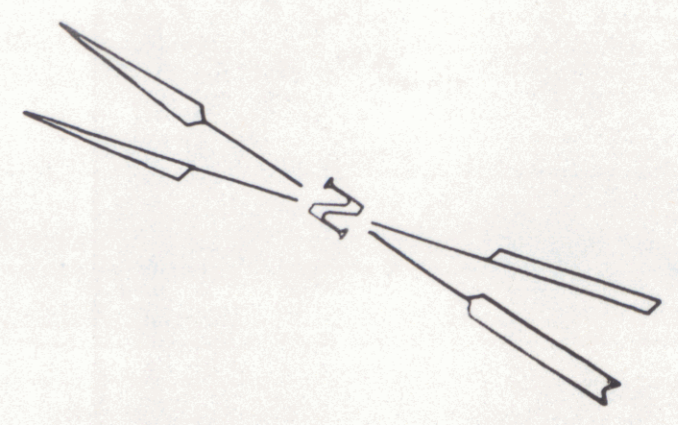
PROFILE  
 DATE  
 DRAWN BY  
 CHECKED BY  
 PROJECT NO.





ACQUIRED FROM LOUIS A. & LILLIAN L. MARTELL  
BY W.D. DATED APRIL 29, 1963 & RECORDED IN BK. 25 PG. 193.

STATE OF VERMONT TO  
R.L. AND M.E. RODGERS BY  
QCD ON 9/13/78 IN BK 35/71  
MP 0005

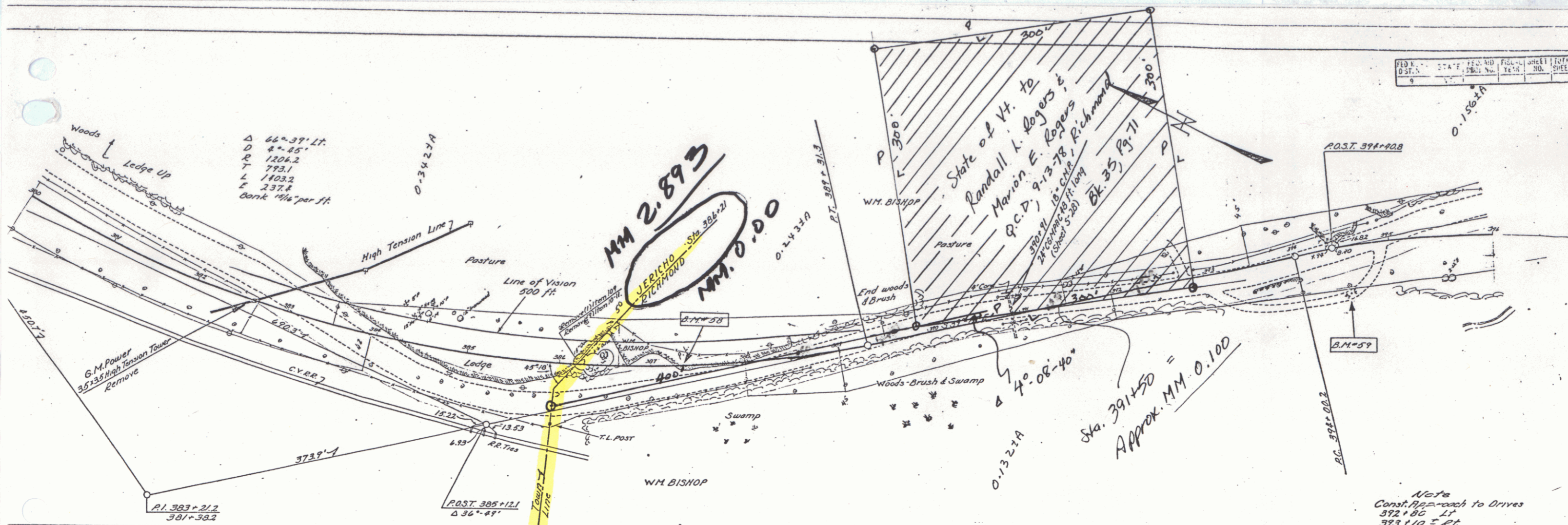


REF. JERICO-RICHMOND S 30 (3)  
SHEETS 20 & 22 OF 79

STATE OF VERMONT  
AGENCY OF TRANSPORTATION

TOWN OF RICHMOND

DATE 8-9-78 DRAWN BY P. J. HARDE

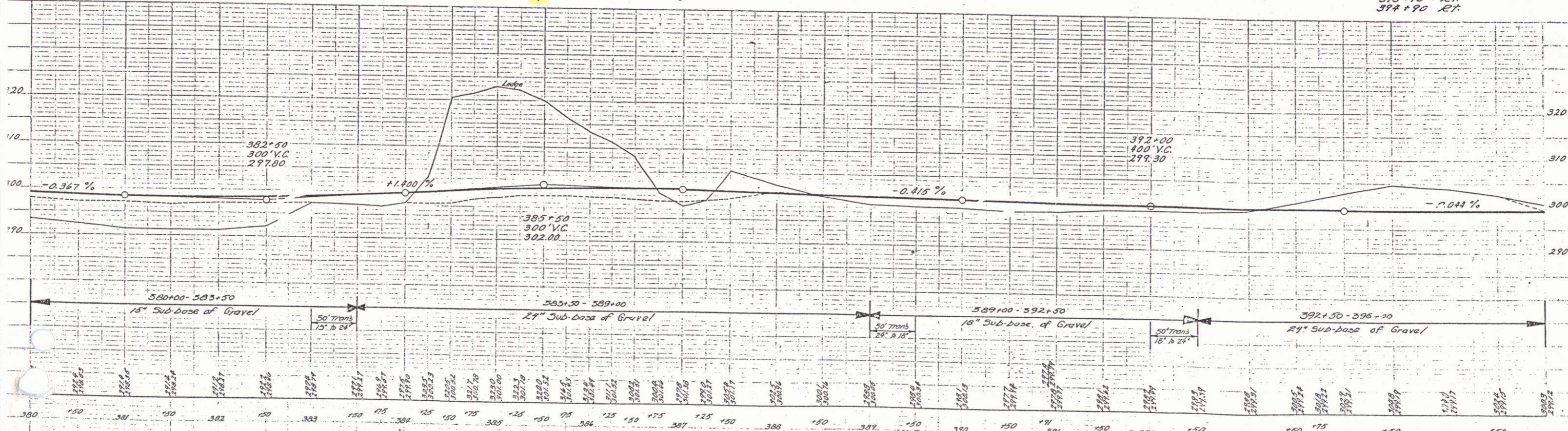


$\Delta$  66° 37' LT.  
 $D$  4" 45'  
 $E$  1206.2  
 $T$  793.1  
 $L$  1423.2  
 $E$  237.4  
 bank 1/4" per ft.

**MM 2.893**  
**MM 0.000**

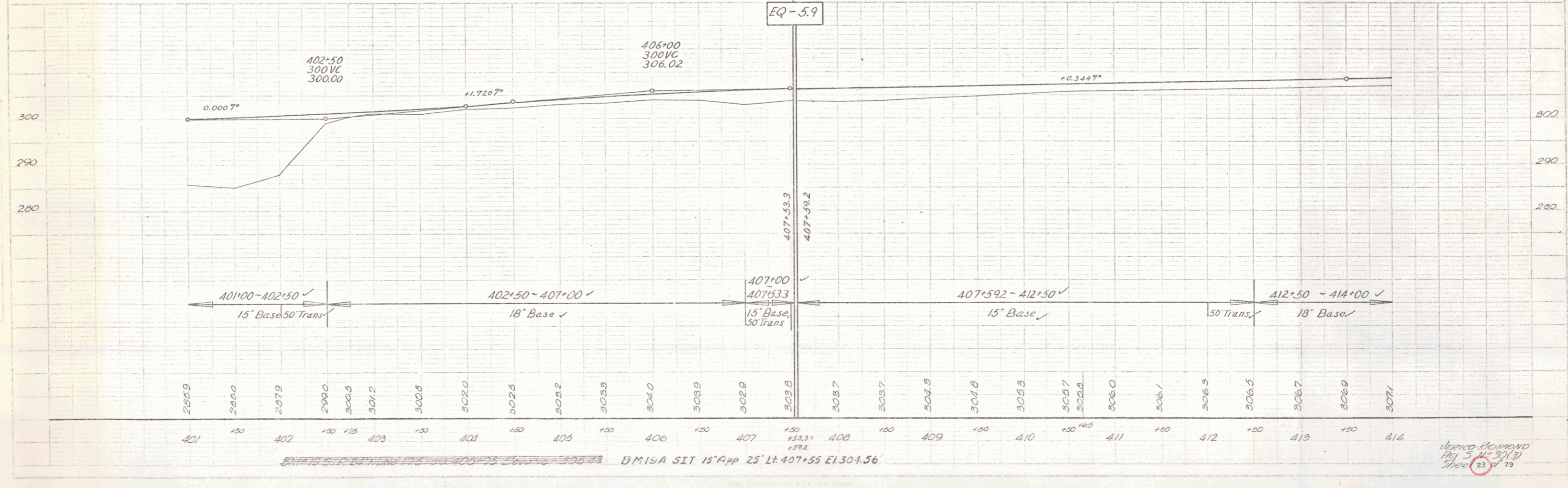
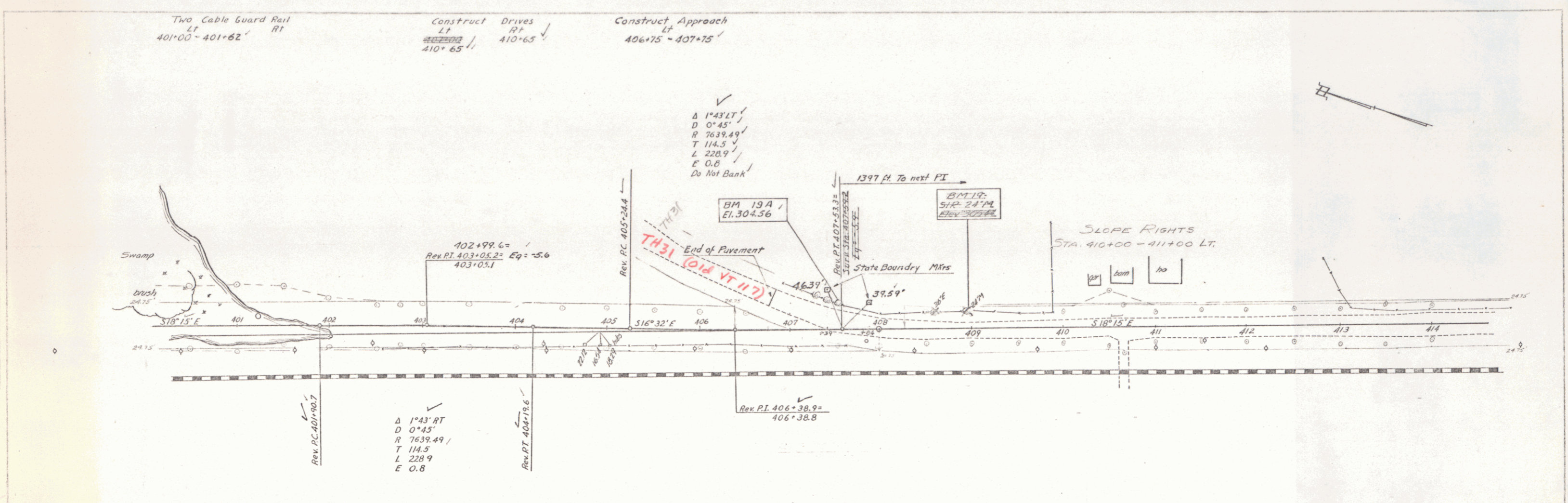
Sta. 391+50 =  
 Approx. MM 0.100

Note  
 Const. Approach to Drives  
 392+80 LT  
 393+10 RT  
 394+90 RT



B.M. #58 Spot on Ledge 6 ft. RT. Sta. 397+32 Elev. 301.23  
 B.M. #59 Spot on Ledge 50 ft. RT. Sta. 394+50 Elev. 306.15

PLAN  
 DATE: 10/1/59  
 DRAWN BY: A. J. Grass  
 TITLE:



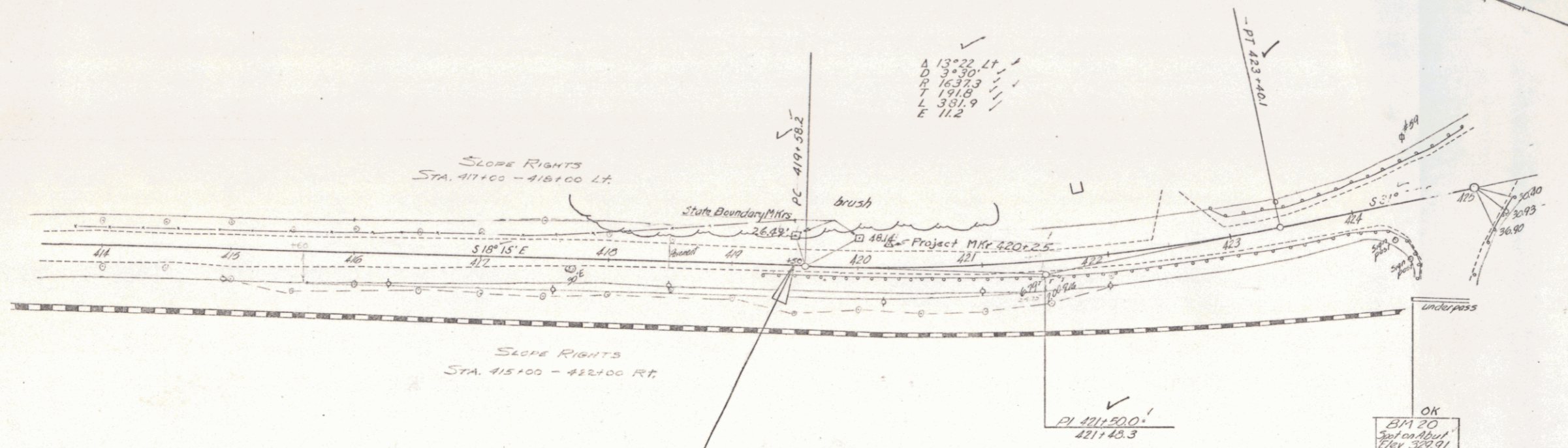
Two Cable Guard Rail  
 LT  
 422+72 - 425+54 419+10 - 424+40'

Construct Approaches  
 419+50 - 424+25'  
 422+60 LT

Removal and Disposal  
 of present guard rail

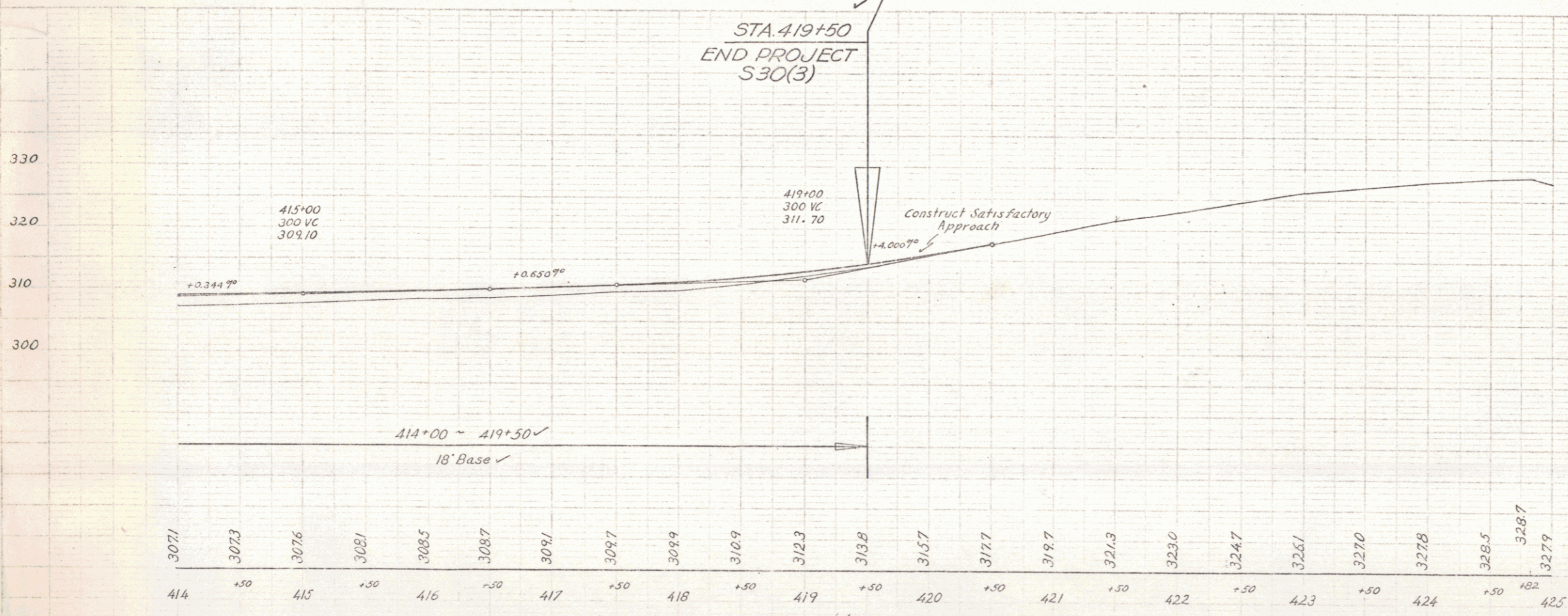
419+26 - 424+50 Rt.  
 422+90 - 425+77 Lt.

Scale  
 1" = 40'  
 1" = 20'



A 13° 22' Lt.  
 D 3+30'  
 R 16.373  
 L 191.8  
 L 351.9  
 E 11.2

STA. 419+50  
 END PROJECT  
 S30(3)



BM # 20 Spot on overpass abutment 76 ft sta. 424+33 Elevation 329.9'

Jerardo Richmond  
 Hy. S. No. 35(3)  
 Sheet 18 of 20