

TWO CABLE GUARD RAIL
 LT RT
 207+00-209+50 207+00-213+50
 215+52-221+50
 222+60-223+00
 217+00-217+80

EXCAVATION AND REMOVAL
 OF ROAD SURFACES AND/OR PAVEMENTS
 LT RT
 207+00-209+50 207+00-223+00
 215+52-221+50 221+00

CONSTRUCT DRIVE
 LT RT
 215+00-41 213+75
 210+00

18" SUB-BASE OF SAND
 212+50-215+00
 220+60-222+50

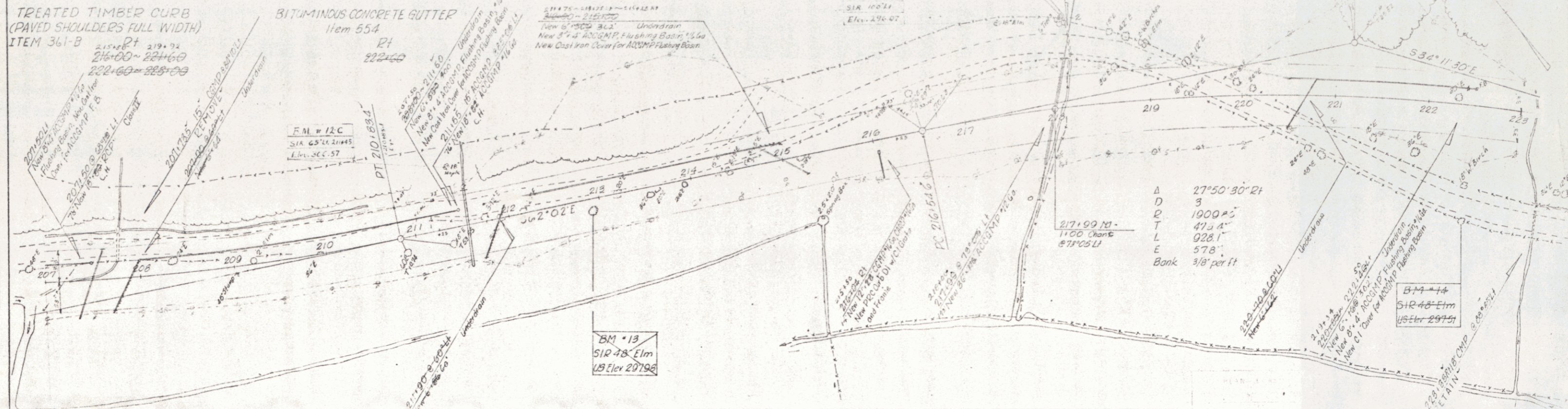
TREATED TIMBER CURB
 (PAVED SHOULDERS FULL WIDTH)
 ITEM 361-B
 LT RT
 215+52-221+50
 222+60-223+00

BITUMINOUS CONCRETE GUTTER
 Item 554
 LT RT
 222+60

UNDERDRAIN
 New 6" PVC 3/4" Underdrain
 New 4" 3/4" 3/4" Flashing Basin 1/4" 1/4"
 New Cast Iron Cover for 40" 3/4" Flashing Basin

Full 12 C
 SIA 100 11
 Elev. 496.07

PLAN
 DATE: 12/1/53
 DRAWN BY: [Signature]
 CHECKED BY: [Signature]
 NOTE: ALL DISTANCES IN FEET UNLESS OTHERWISE NOTED.



Δ 27°50'30" RT
 D 3
 R 1000 AS
 T 475 AS
 L 928 FT
 E 578'
 Bank 3/8" per ft

BM #13
 S1R 48 Elm
 US Elev 297.96

BM #14
 S1R 48 Elm
 US Elev 297.51

TWO CABLE GUARD RAIL
 LT RT
 223+00-223+44 223+00-224+26
 226+00-226+90
 233+00-233+55

TREATED TIMBER CURB
 (PAVED SHOULDERS FULL WIDTH)
 ITEM 361-B
 LT RT
 223+00-224+26
 226+00-226+90
 233+00-233+55

EXCAVATION AND REMOVAL
 OF ROAD SURFACES AND/OR PAVEMENT
 LT RT
 223+00-223+44
 226+00-226+90
 233+00-233+55

18" SUB-BASE OF SAND
 223+00-227+25
 223+00-231+50

PAVED DITCH
 227+63 ft

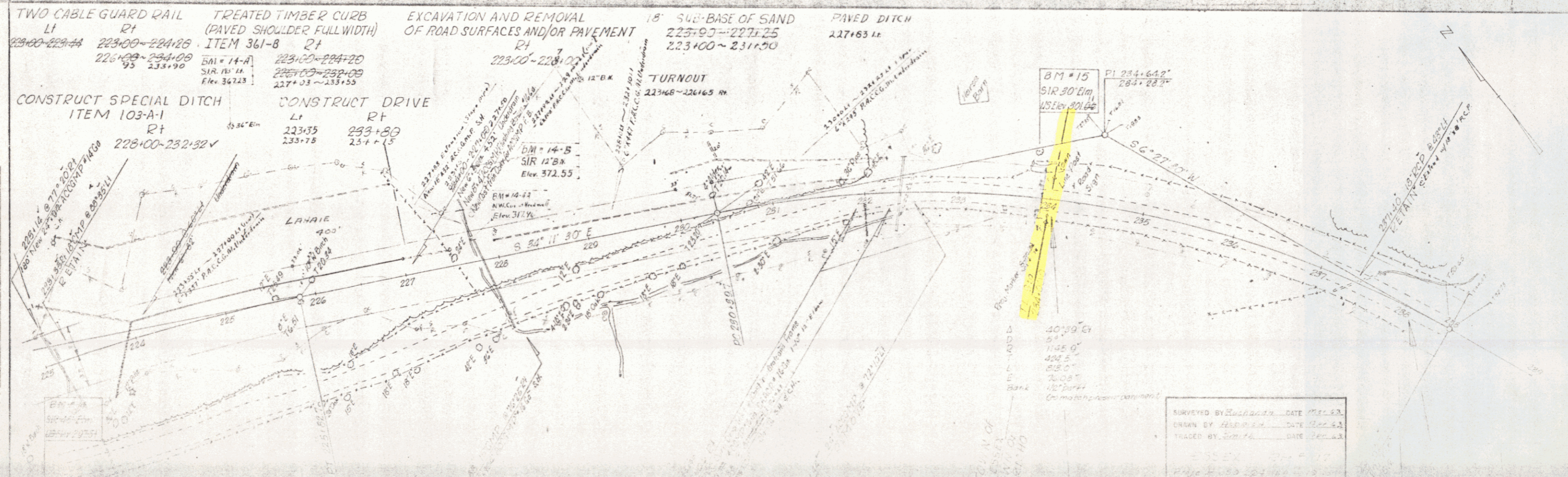
CONSTRUCT SPECIAL DITCH
 ITEM 103-A-1
 LT RT
 228+00-232+32 V

CONSTRUCT DRIVE
 LT RT
 223+35 223+80
 233+75 234+15

TURNOUT
 223+68-226+65 M

BM #15
 S1R 30 Elm
 US Elev 297.66

PLAN
 DATE: 12/1/53
 DRAWN BY: [Signature]
 CHECKED BY: [Signature]
 NOTE: ALL DISTANCES IN FEET UNLESS OTHERWISE NOTED.



SURVEYED BY: [Signature] DATE: Dec. 53
 DRAWN BY: [Signature] DATE: Dec. 53
 CHECKED BY: [Signature] DATE: Dec. 53

SHEET 8