

TWO CABLE GUARD RAIL
 2000 FT
 183+00-183+72.43
 187+79-188+26.35
 185+50

CONSTRUCT DRIVE
 RT
 153+00 179+43
 180+00 180+00
 177+25 177+25
 178+50 178+50

EXCAVATION AND REMOVAL OF ROAD SURFACES AND/OR PAVEMENTS
 181+75-185+50

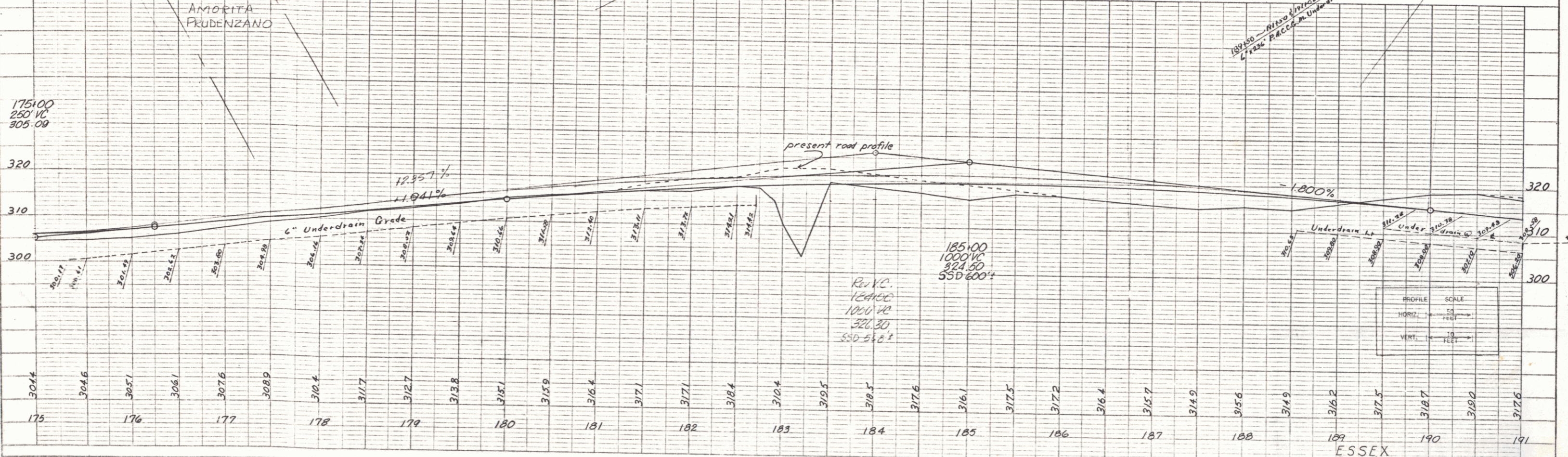
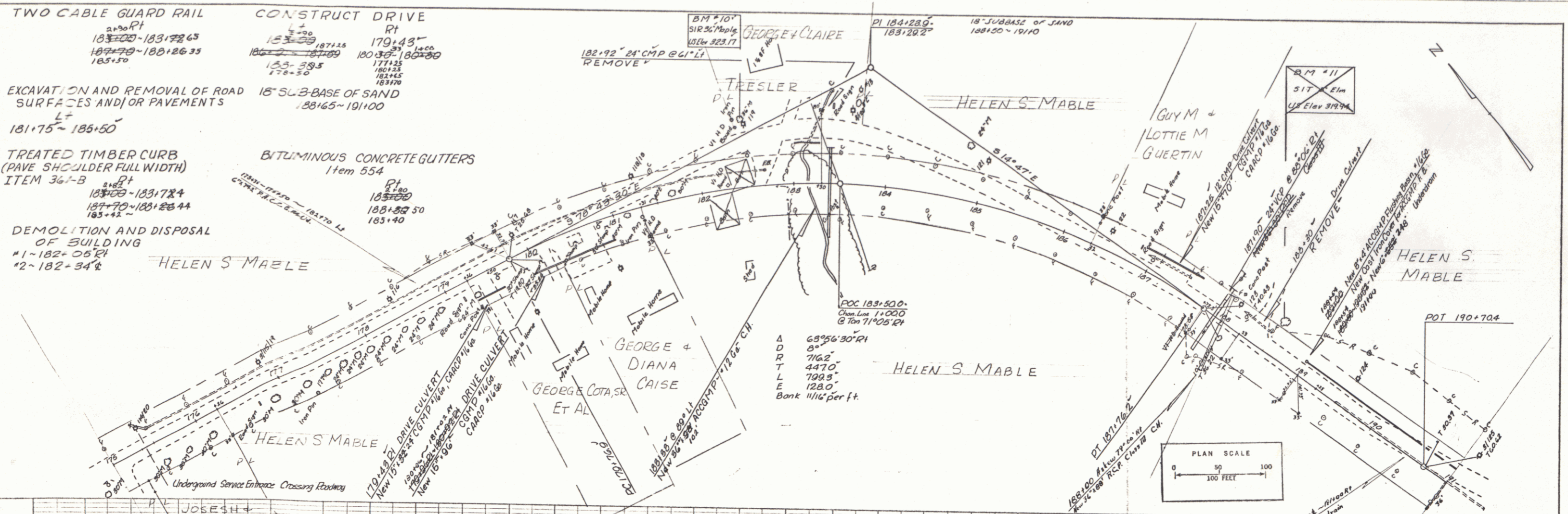
18" SUB-BASE OF SAND
 188+65-191+00

TREATED TIMBER CURB (PAVE SHOULDER FULL WIDTH)
 ITEM 361-B
 183+00-183+72.4
 187+79-188+26.44
 185+42

BITUMINOUS CONCRETE GUTTERS
 Item 554
 183+00
 183+50
 185+40

DEMOLITION AND DISPOSAL OF BUILDING
 #1-182+05 RT
 #2-182+34 L

PLAN
 DATE: 11/15/00
 DRAWN BY: [illegible]
 CHECKED BY: [illegible]
 IN CHARGE: [illegible]



PROFILE
 DATE: 11/15/00
 DRAWN BY: [illegible]
 CHECKED BY: [illegible]
 IN CHARGE: [illegible]

PLATE 1 PLAN PROFILE OF P. B. & S. ROAD
 ESSEX COUNTY, NEW YORK
 K. L. CO. NO. 38800

ESSEX
 Project No. 0224(1) SA
 Sheet (2) of 25 Sheets