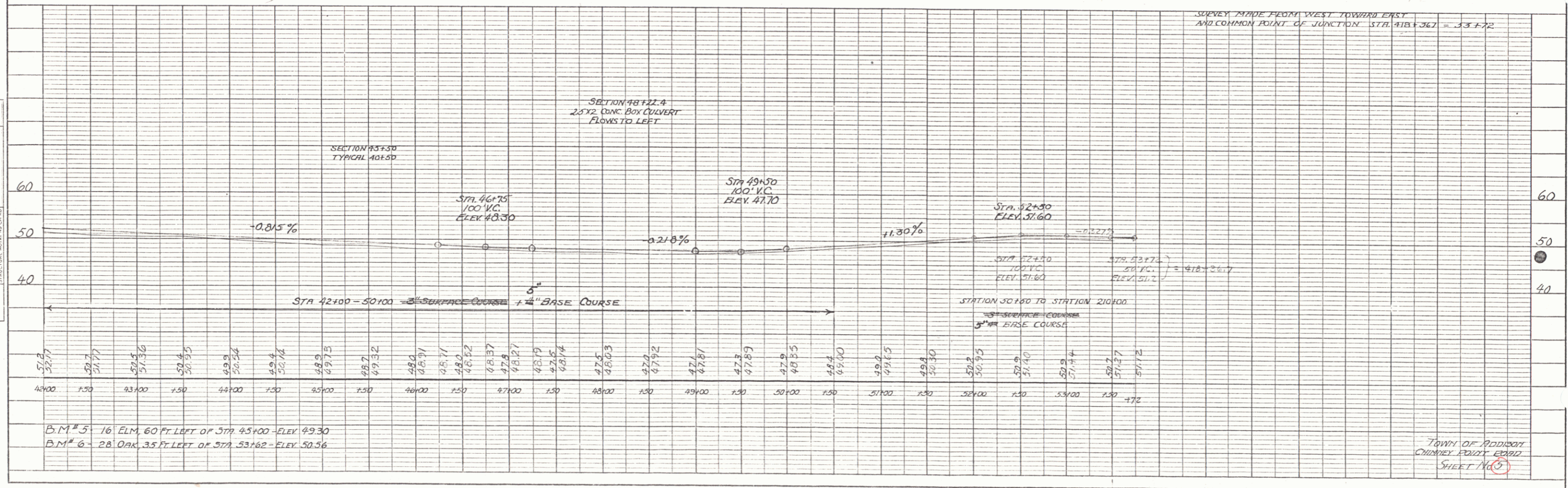
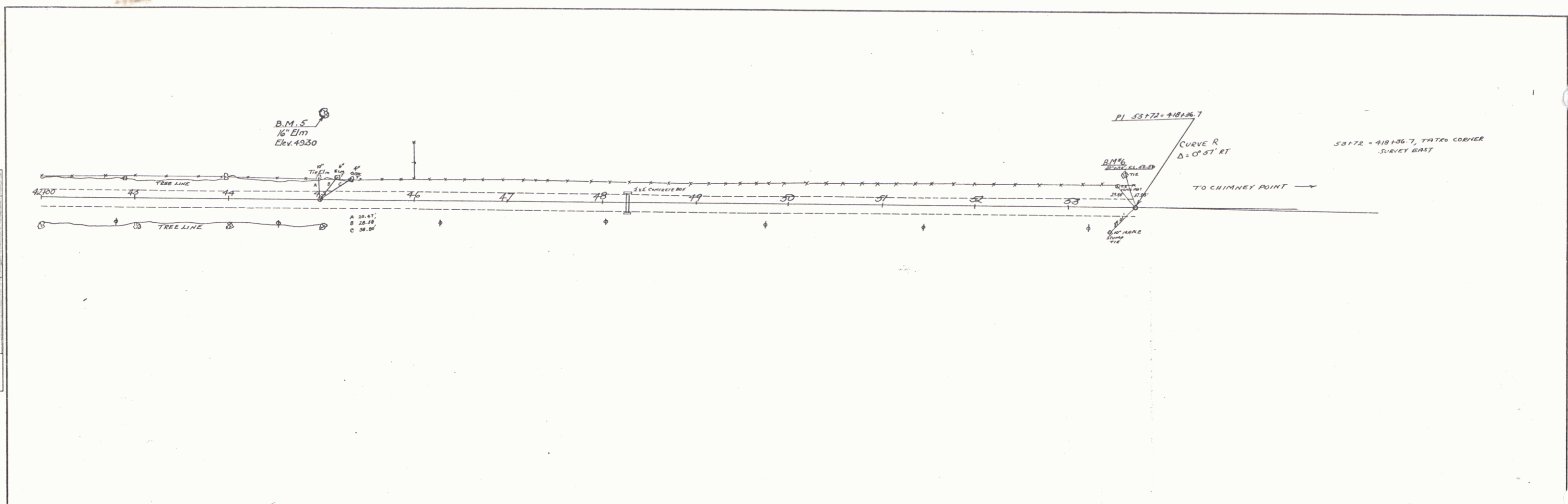


DATE: 1947
 BY: E. R. CHANCE
 CHECKED: E. R. CHANCE
 PLAN
 NOTED: NOTED
 NOTE BOOK: NOTE BOOK
 NO. OF WY CHECKED: NO. OF WY CHECKED

DATE: 1947
 BY: E. R. CHANCE
 CHECKED: E. R. CHANCE
 PROFILE
 NOTED: NOTED
 NOTE BOOK: NOTE BOOK
 NO. OF WY CHECKED: NO. OF WY CHECKED



B.M. 5 - 16' ELM, 60 FT. LEFT OF STA. 45+00 - ELEV. 49.30
 B.M. 6 - 28' OAK, 35 FT. LEFT OF STA. 53+62 - ELEV. 50.56

TOWNSHIP OF RODDISBORO
 CHIMNEY POINT ROAD
 SHEET No. 6