

FED. ROAD DIST. NO.	STATE	PROJ. NO.	FISCAL YEAR	SHEET NO.	TOTAL SHEETS
9	VT.	163/1934	1934	1	16

**INDEX OF SHEETS**

SHEET NO. 1 TITLE PAGE

" 2 TYPICAL CROSS-SECTION OF IMPROVEMENT (24 GRAVEL)

" 3 DRAINAGE AND MOUNDING TABLES

" 4 PLAN AND PROFILE SHEETS

" 5 SUB. 20 NO. 25 75 (10 SPAN)

" 6 DETAILS OF ABUTMENTS

" 7 SUB. 20 NO. 25 75 (10 SPAN)

" 8 50 NO. 20 TYPICAL DETAILS

" 9 50 NO. 20 CABLE RAIL

" 10 50 NO. 11 BARRIAGES, LIGHTS, ETC.

" 11 50 STRUCTURES SERIES 3 NO. 30

" 12-14 CROSS SECTIONS

Standard sheet 5-30 approved by the Chief Engineer on Aug. 15, 1933.

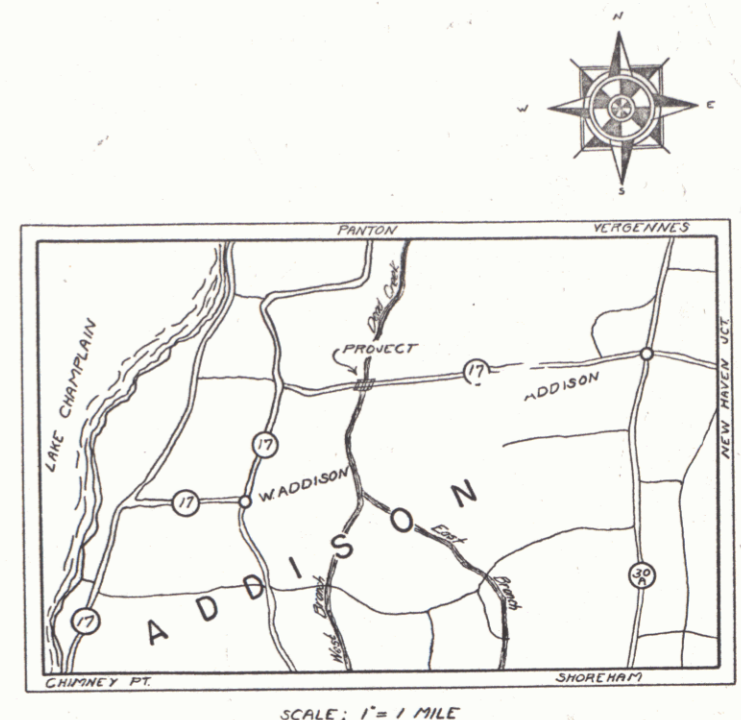
**STATE OF VERMONT  
STATE HIGHWAY DEPARTMENT**

**PLAN AND PROFILE OF PROPOSED  
STATE HIGHWAY**  
NATIONAL RECOVERY SECONDARY PROJECT

**TOWN OF ADDISON**

ROUTE NO. 17

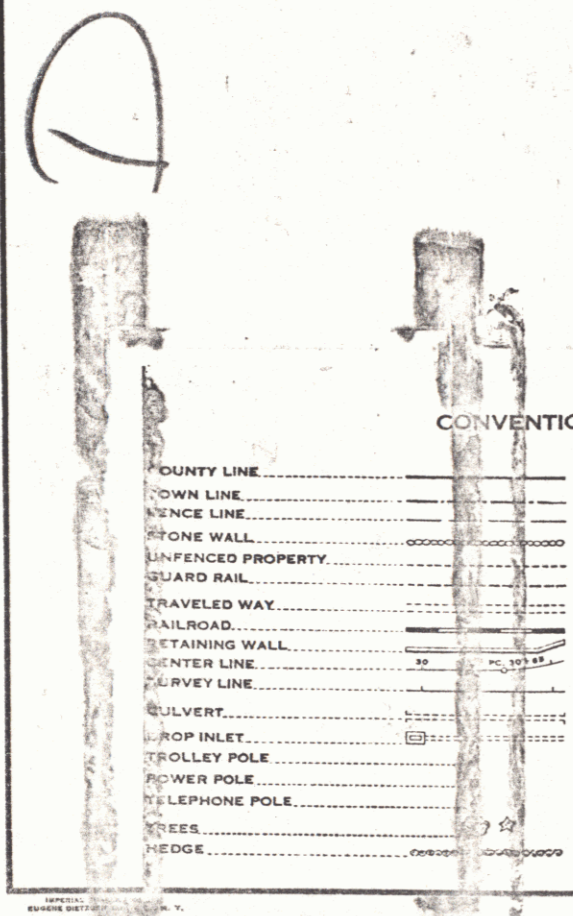
BRIDGE LOCATED 2.50 MILES WEST OF  
ADDISON VILLAGE, OVER DEAD CREEK.



LENGTH BRIDGE & APPROACHES 848.1 FT. = 0.160 MI.  
PROJECT 848.1 " = 0.160 "

PLAN 1" = 20'  
PROFILE, HORIZONTAL 1" = 20'  
VERTICAL 1" = 20'  
CROSS SECTIONS 1" = 5'

RIGHT-OF-WAY DIVISION  
TOWN FILE  
PERPETUAL  
Town of: ADDISON  
(To Be Returned To R.O.W. Division)



**CONVENTIONAL SIGNS**

GROUND ELEVATION.....	BATH	LINE
GRADE ELEVATION.....	BATH	LINE

**CURVE DATA**

DEFLECTION ANGLE.....	Δ
DEGREE OF CURVE.....	D
RADIUS OF CURVE.....	R
TANGENT DISTANCE.....	T
LENGTH OF CURVE.....	L
EXTERNAL DISTANCE.....	E
POINT OF INTERSECTION.....	P. I.
POINT OF CURVE.....	P. C.
POINT OF TANGENT.....	P. T.
POINT ON TANGENT.....	P. O. T.

THESE PLANS ARE SUBJECT TO SUCH REVISIONS AS MAY BE REQUIRED BY THE BUREAU OF PUBLIC ROADS OR THE COMMISSIONER OF HIGHWAYS. CONSTRUCTION IS TO BE CARRIED ON IN ACCORDANCE WITH THE STANDARD ROAD AND BRIDGE SPECIFICATIONS OF 1930 WITH ALL SUBSEQUENT APPROVED REVISIONS AND SUCH MODIFICATIONS AND SPECIAL PROVISIONS AS ARE SUBMITTED WITH THE PLANS.

MILEAGE STA. 350 + 24



ROUTE VT 17  
DATE: 08/20/1934  
P.N.: 000523  
Project: NRS 163 (1935)

APPROVED: August 20, 1934

SUBMITTED BY ORDER OF THE STATE HIGHWAY I  
H. E. Sargent  
COMMISSIONER OF HIGHWAYS

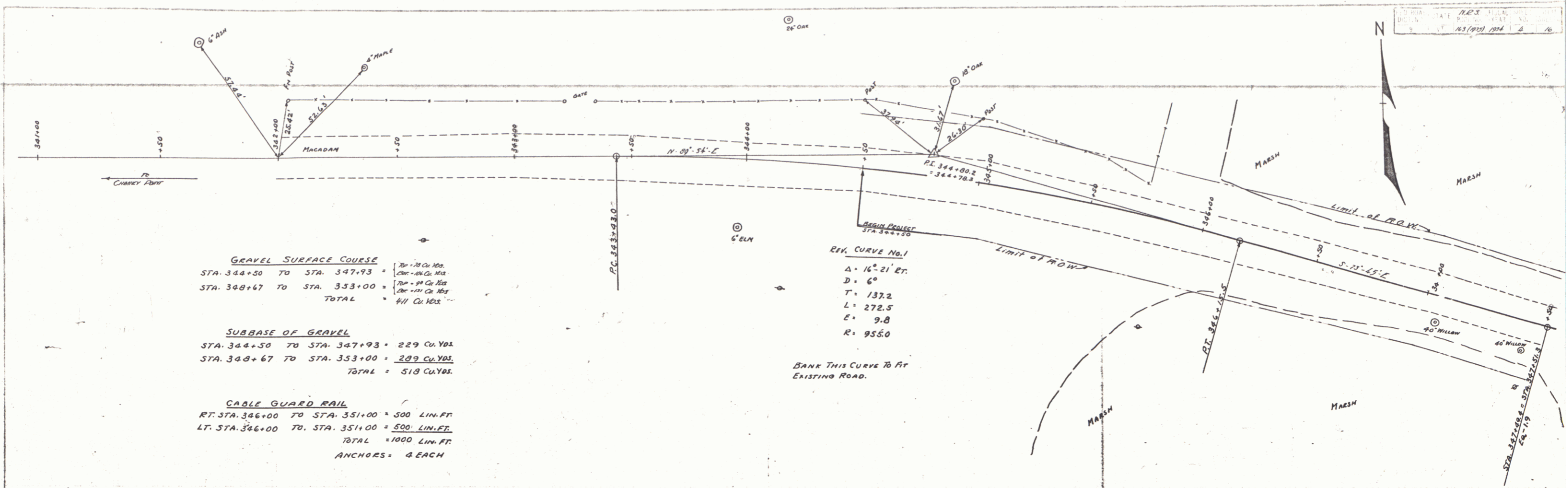
RECOMMENDED \_\_\_\_\_  
DISTRICT ENGINEER BUREAU OF PUBLIC ROADS

RECOMMENDED FOR APPROVAL \_\_\_\_\_  
CHIEF ENGINEER BUREAU OF PUBLIC ROADS

APPROVED \_\_\_\_\_  
DIRECTOR BUREAU OF PUBLIC ROADS

SERIES N.P.3 No. 163/1934 FILED  
SHEET 1 OF 16

DIST # 5 PLANS 1



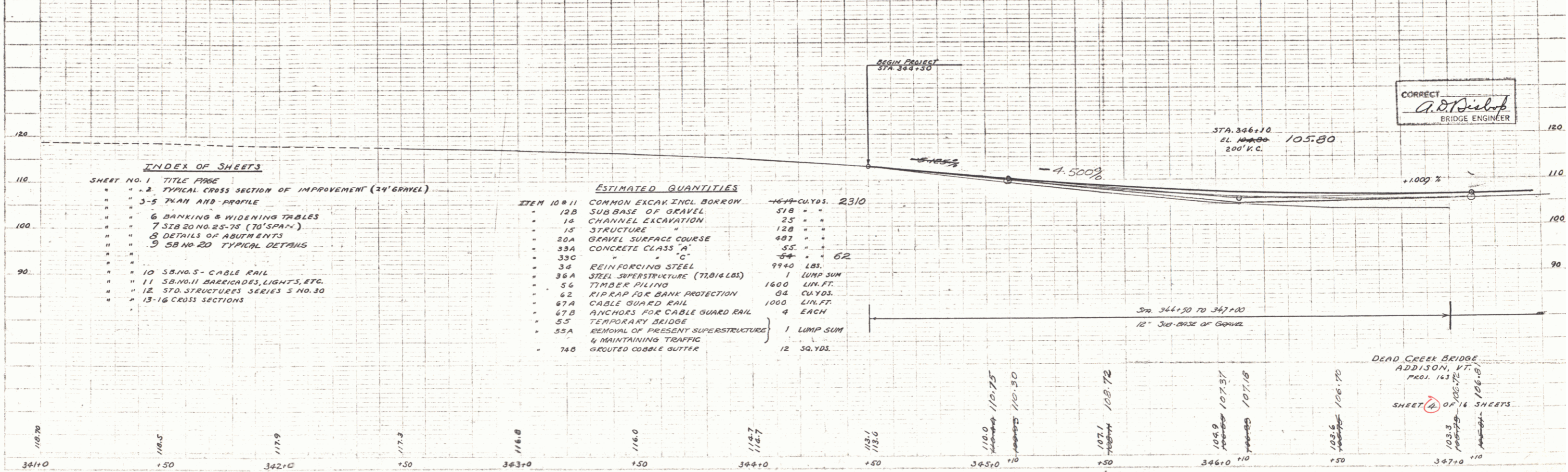
**GRAVEL SURFACE COURSE**  
 STA. 344+50 TO STA. 347+93 = 349 Cu. Yds.  
 STA. 348+67 TO STA. 353+00 = 511 Cu. Yds.  
 TOTAL = 860 Cu. Yds.

**SUBBASE OF GRAVEL**  
 STA. 344+50 TO STA. 347+93 = 229 Cu. Yds.  
 STA. 348+67 TO STA. 353+00 = 309 Cu. Yds.  
 TOTAL = 538 Cu. Yds.

**CABLE GUARD RAIL**  
 RT. STA. 346+00 TO STA. 351+00 = 500 LIN. FT.  
 LT. STA. 346+00 TO STA. 351+00 = 500 LIN. FT.  
 TOTAL = 1000 LIN. FT.  
 ANCHORS = 4 EACH

**REV. CURVE No. 1**  
 Δ = 16° 21' 21"  
 D = 6"  
 T = 137.2  
 L = 272.5  
 E = 9.8  
 R = 9550

BANK THIS CURVE TO FIT EXISTING ROAD.



**INDEX OF SHEETS**

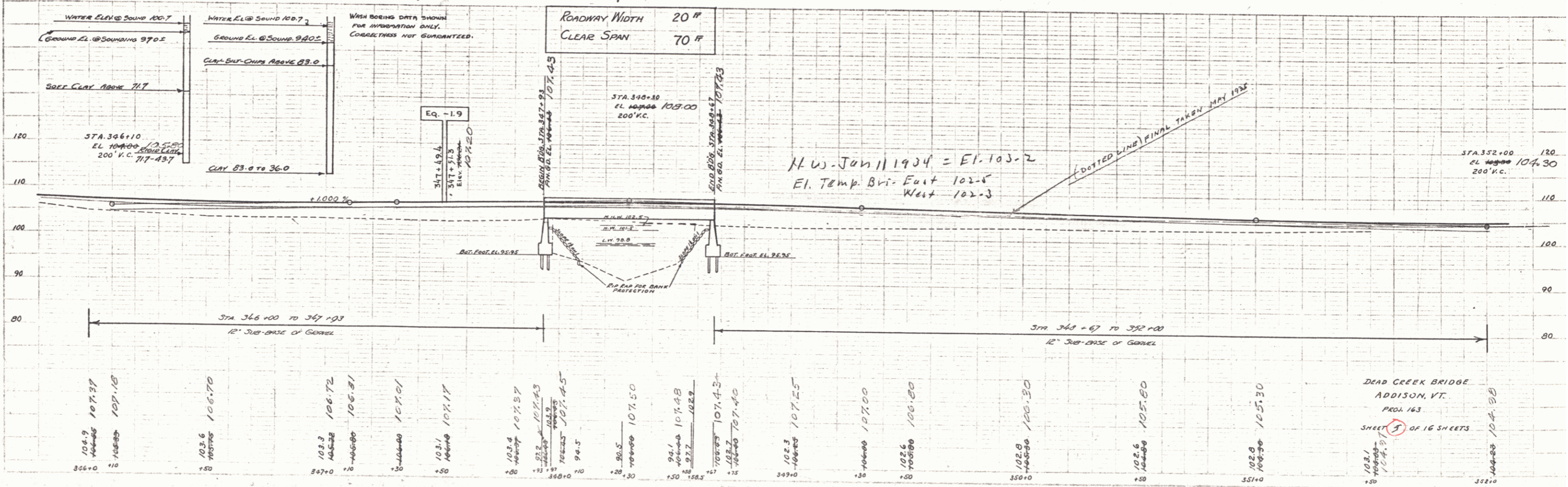
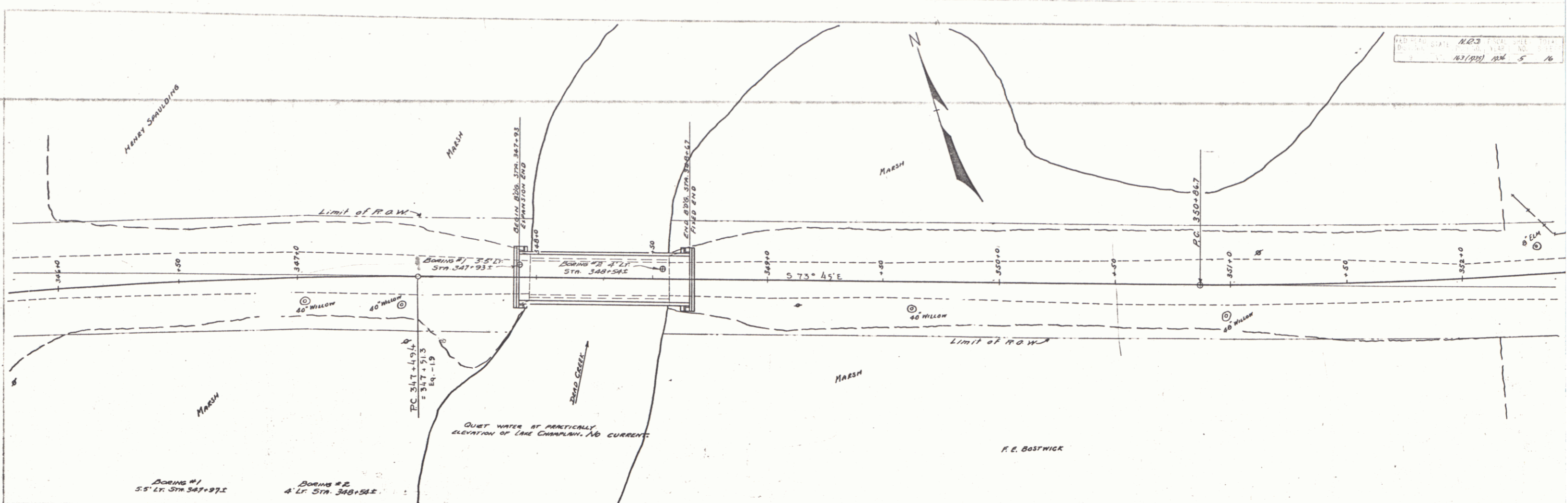
SHEET NO. 1	TITLE PAGE
2	TYPICAL CROSS SECTION OF IMPROVEMENT (24' GRAVEL)
3-5	PLAN AND PROFILE
6	BANKING & WIDENING TABLES
7	SIB 20 NO. 25-75 (70' SPAN)
8	DETAILS OF ABUTMENTS
9	5B NO. 20 TYPICAL DETAILS
10	S.B. NO. 5 - CABLE RAIL
11	S.B. NO. 11 BARRICADES, LIGHTS, ETC.
12	STD. STRUCTURES SERIES 3 NO. 30
13-16	CROSS SECTIONS

**ESTIMATED QUANTITIES**

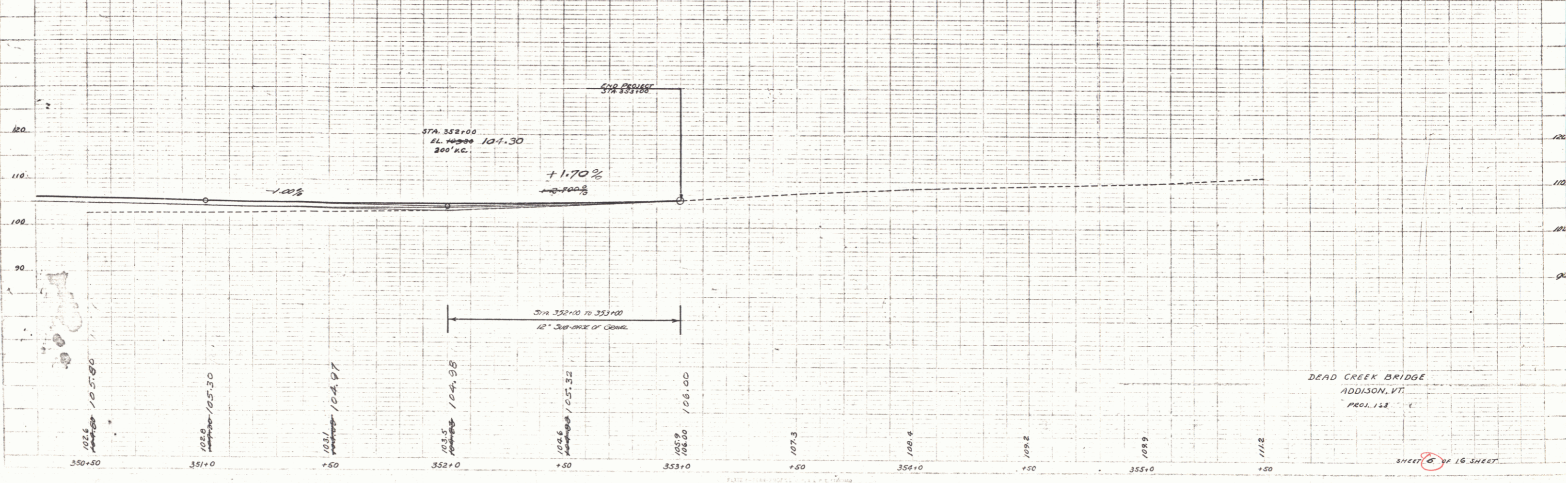
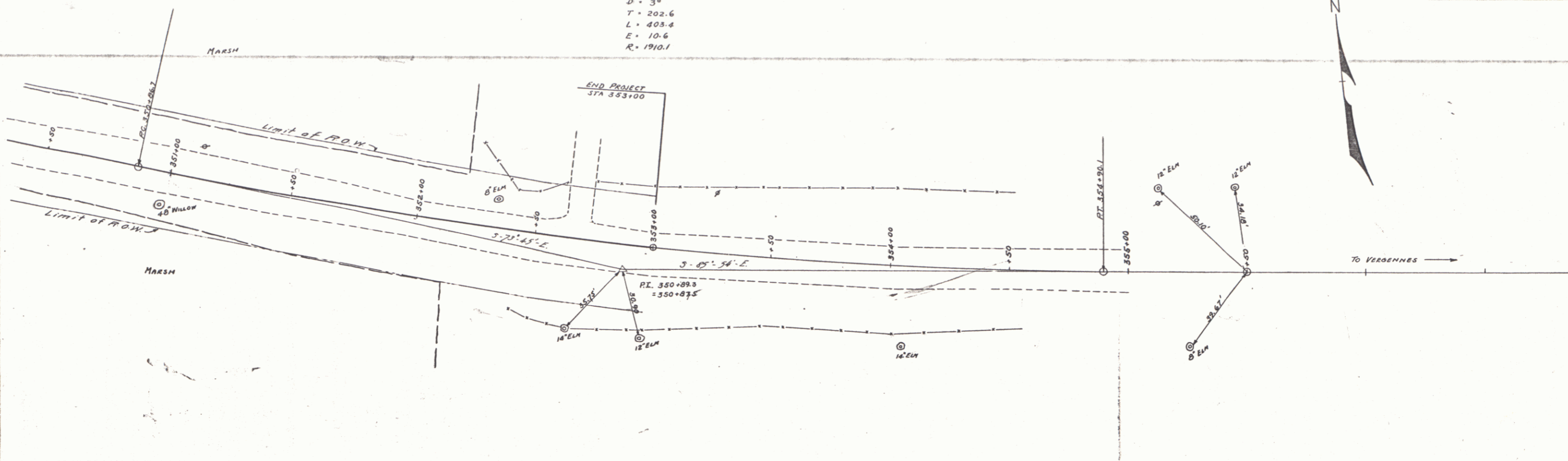
ITEM 10 B 11	COMMON EXCAV INCL BORROW	1577 CU. YDS.	2310
12 B	SUBBASE OF GRAVEL	518 "	"
14	CHANNEL EXCAVATION	25 "	"
15	STRUCTURE	128 "	"
20 A	GRAVEL SURFACE COURSE	882 "	"
33 A	CONCRETE CLASS 'A'	55 "	"
33 C	" 'C'	54 "	62
34	REINFORCING STEEL	9940 LBS.	"
36 A	STEEL SUPERSTRUCTURE (77,016 LBS.)	1	LUMP SUM
56	TIMBER PILING	1600 LIN. FT.	"
62	RIPRAP FOR BANK PROTECTION	64 CU. YDS.	"
67 A	CABLE GUARD RAIL	1000 LIN. FT.	"
67 B	ANCHORS FOR CABLE GUARD RAIL	4	EACH
55	TEMPORARY BRIDGE	1	LUMP SUM
55 A	REMOVAL OF PRESENT SUPERSTRUCTURE & MAINTAINING TRAFFIC	1	LUMP SUM
74 B	GROUTED COBBLE GUTTER	12	SQ. YDS.

CORRECT  
 A. D. SIELSBACH  
 BRIDGE ENGINEER

DEAD CREEK BRIDGE  
 ADDISON, VT.  
 PROJ. 163  
 SHEET 2 OF 16 SHEETS



**CURVE No. 2**  
 $\Delta = 12^{\circ}-06' LR$   
 $D = 3^{\circ}$   
 $T = 202.6$   
 $L = 403.4$   
 $E = 10.6$   
 $R = 1910.1$



DEAD CREEK BRIDGE  
 ADDISON, VT.  
 PROJ. 128

SHEET 8 OF 16 SHEETS

4