

GRAVEL SURFACE COURSE
 STA. 344+50 TO STA. 347+93 = 349 Cu. Yds.
 STA. 348+67 TO STA. 353+00 = 518 Cu. Yds.
 TOTAL = 867 Cu. Yds.

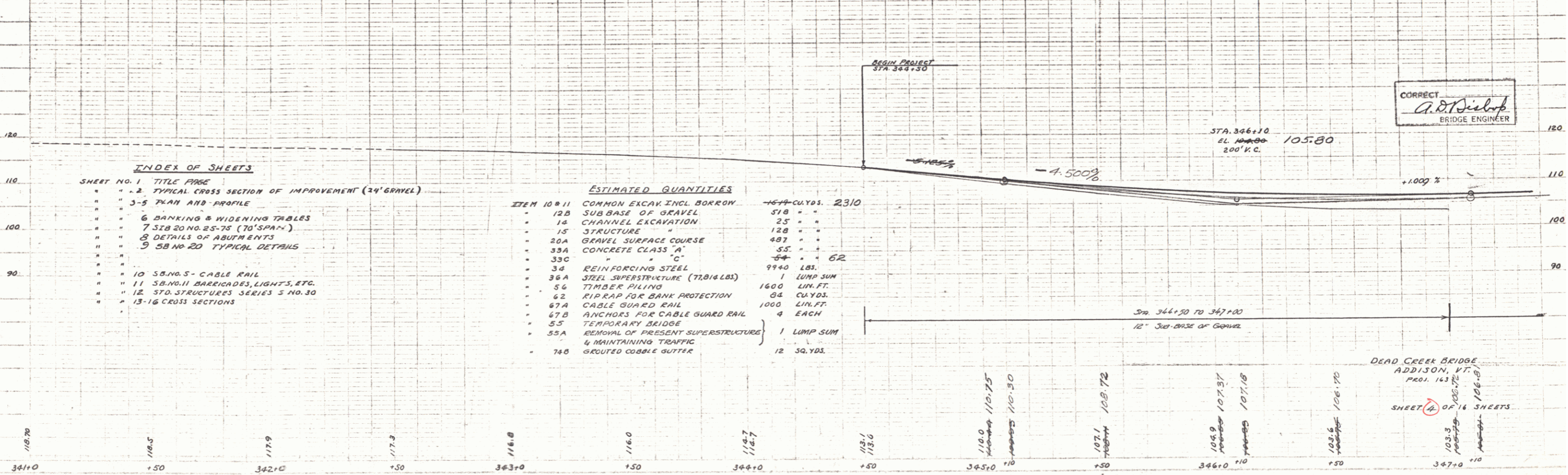
SUBBASE OF GRAVEL
 STA. 344+50 TO STA. 347+93 = 229 Cu. Yds.
 STA. 348+67 TO STA. 353+00 = 309 Cu. Yds.
 TOTAL = 538 Cu. Yds.

CABLE GUARD RAIL
 RT. STA. 346+00 TO STA. 351+00 = 500 LIN. FT.
 LT. STA. 346+00 TO STA. 351+00 = 500 LIN. FT.
 TOTAL = 1000 LIN. FT.
 ANCHORS = 4 EACH

REV. CURVE No. 1
 $\Delta = 16^\circ 21' 27''$
 $D = 6^\circ$
 $T = 137.2$
 $L = 272.5$
 $E = 9.8$
 $R = 9550$

PLAN

DATE	1/23/26
DRAWN BY	
CHECKED BY	
SCALE	
PROJECT	
NO.	
BY	
FOR	
AT	
BY	
FOR	
AT	
BY	
FOR	
AT	



CORRECT
A.D. Seibert
 BRIDGE ENGINEER

INDEX OF SHEETS

SHEET NO. 1	TITLE PAGE
2	TYPICAL CROSS SECTION OF IMPROVEMENT (24' GRAVEL)
3-5	PLAN AND PROFILE
6	BANKING & WIDENING TABLES
7	SIB 20 NO. 25-75 (70' SPAN)
8	DETAILS OF ABUTMENTS
9	5B NO. 20 TYPICAL DETAILS
10	S.B. NO. 5 - CABLE RAIL
11	S.B. NO. 11 BARRICADES, LIGHTS, ETC.
12	STD. STRUCTURES SERIES S NO. 30
13-16	CROSS SECTIONS

ESTIMATED QUANTITIES

ITEM 10 B 11	COMMON EXCAV INCL BORROW	1577 CU. YDS.	2310
12 B	SUBBASE OF GRAVEL	518 "	"
14	CHANNEL EXCAVATION	25 "	"
15	STRUCTURE	128 "	"
20 A	GRAVEL SURFACE COURSE	892 "	"
33 A	CONCRETE CLASS 'A'	55 "	"
33 C	" 'C'	54 "	62
34	REINFORCING STEEL	9940 LBS.	
36 A	STEEL SUPERSTRUCTURE (77,016 LBS.)	1	LUMP SUM
56	TIMBER PILING	1600 LIN. FT.	
62	RIPRAP FOR BANK PROTECTION	64 CU. YDS.	
67 A	CABLE GUARD RAIL	1000 LIN. FT.	
67 B	ANCHORS FOR CABLE GUARD RAIL	4	EACH
55	TEMPORARY BRIDGE	1	LUMP SUM
55 A	REMOVAL OF PRESENT SUPERSTRUCTURE & MAINTAINING TRAFFIC	4	MAINTAINING TRAFFIC
74 B	GROUTED COBBLE GUTTER	12	30 YDS.

DEAD CREEK BRIDGE
 ADDISON, VT.
 PROJ. 163
 SHEET 2 OF 16 SHEETS