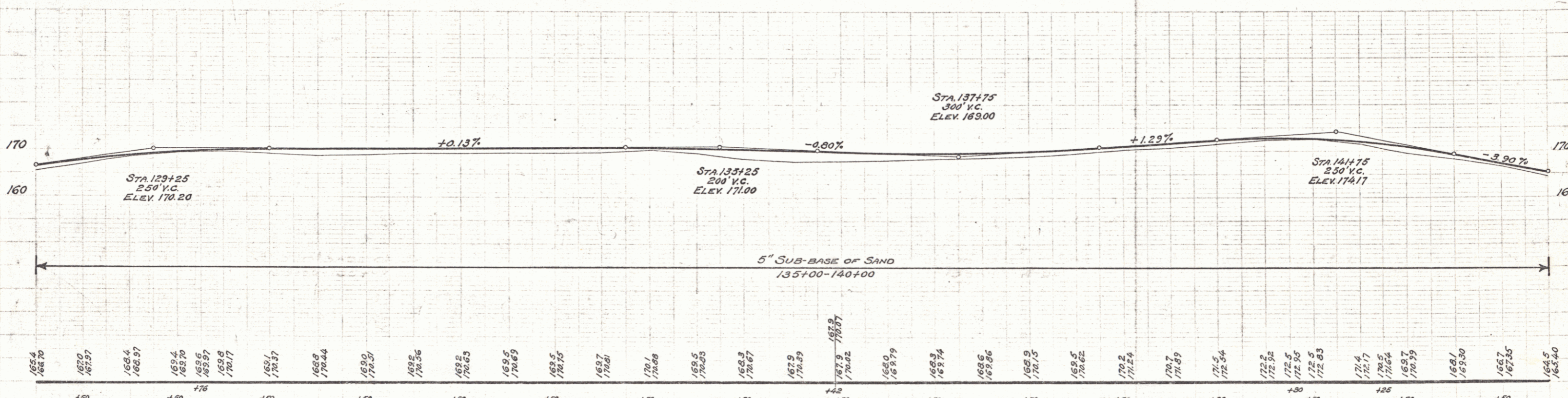
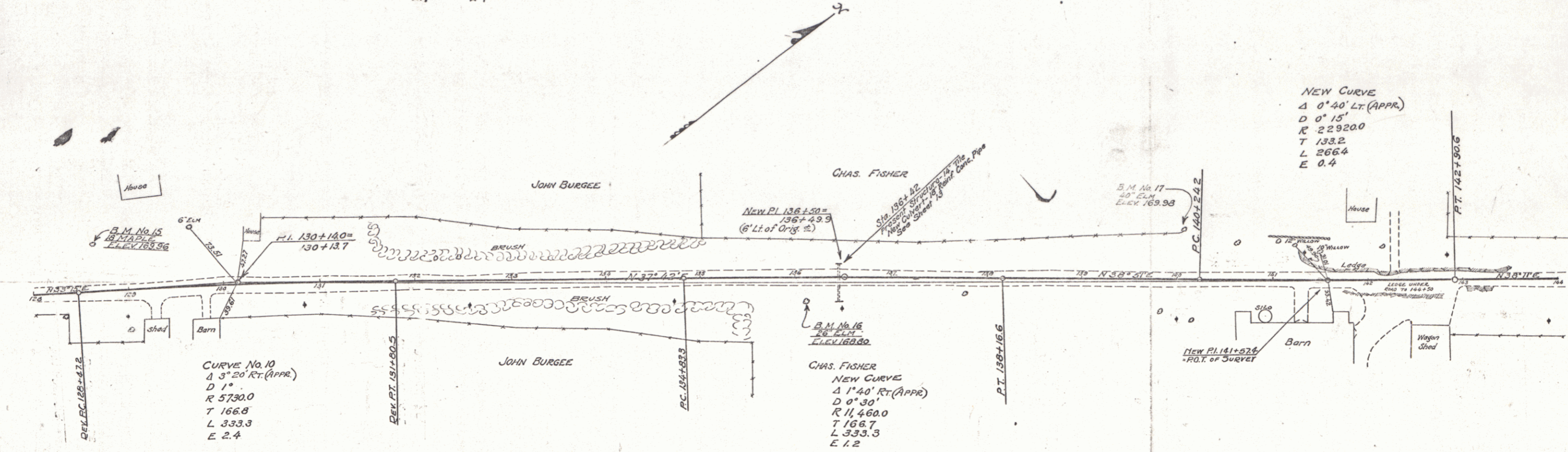


Wood Guard Rail Required
 Station Left Right
 136+42 24 ft. 24 ft.

New Reinf. Conc. Pipe Culverts Required
 Station Diam. Leng. Conc. B Steel
 136+42 18" 32 ft. 30 c.y. 83# 2.1 2.4

FED. ROAD DIST. NO.	STATE	FED. AID PROJ. NO.	FISCAL YEAR	SHEET NO.	TOTAL SHEETS
9	VT.		1929	11	33



B.M. No. 15 - Spike in 18" Maple Lt. of Sta. 123+65 - Elev. 169.96
 B.M. No. 16 - Spike in 26" Elm, Rt. of Sta. 136+03 - Elev. 168.80
 B.M. No. 17 - Spike in 40" Elm, Lt. of Sta. 140+03 - Elev. 169.98

TOWN OF ADDISON
 LAKE CHAMPLAIN BRIDGE APPROACH ROAD
 SHEET 11 OF 33