

INDEX OF SHEETS

1	TITLE PAGE
2	TYPICAL CROSS-SECTION OF IMPROVEMENT
3	DETAILS OF CONSTRUCTION
4-12	PLAN AND PROFILE SHEETS
13	STANDARD STRUCTURE SHEET 520 (PIPE CULVERTS)
14	BRIDGE DETAILS
15	SLB 20 NO. C.R. MAIN & APPROACH SLAB DETAILS
16	SLB 2 TYPICAL DETAILS
17	SLB 2A
18	SLB 3 CABLE RAIL
19-25	CROSS SECTIONS

STATE OF VERMONT
STATE HIGHWAY DEPARTMENT

PLAN AND PROFILE OF PROPOSED
STATE HIGHWAY

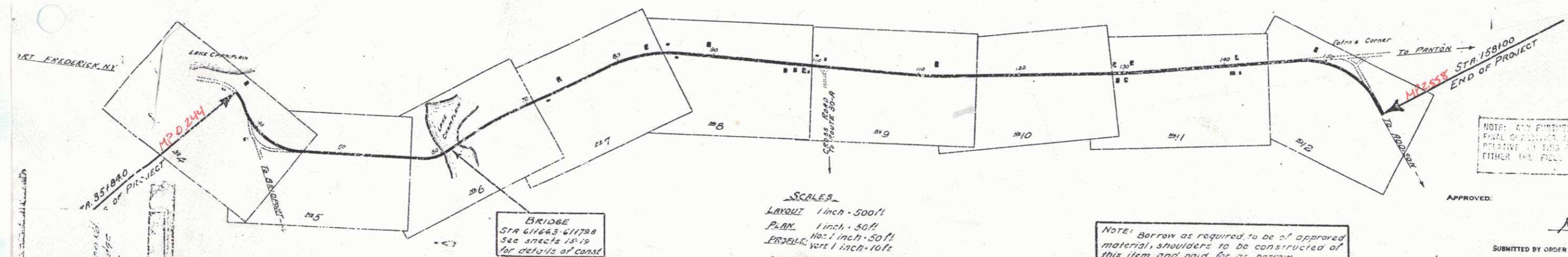
TOWN OF ADDISON

CHIMNEY POINT-ADDISON ROAD

FROM THE LAKE CHAMPLAIN BRIDGE
NORTHERLY 2.306 MILES TO TATRO'S CORNER

LENGTH OF PROJECT 12,777.8 FT. = 2.306 MILES INCL. BRIDGE
LENGTH OF PROJECT 12,162.3 FT. = 2.303 MILES EXCL. BRIDGE

RECORD PLANS



CONVENTIONAL SIGNS

GROUND ELEVATION	BY	DATE
GRADE ELEVATION	BY	DATE

CURVE DATA

DEFLECTION ANGLE	Δ
DEGREE OF CURVE	D
RADIUS OF CURVE	R
TANGENT DISTANCE	T
LENGTH OF CURVE	L
EXTERNAL DISTANCE	E
POINT OF INTERSECTION	P.I.
POINT OF CURVE	P.C.
POINT OF TANGENT	P.T.
POINT ON TANGENT	P.O.T.

RECORD PLANS
ADDISON-CHAMPLAIN BRIDGE APPR.
CONTR. EARLE & MEARS
CONTRACT DATED MAY 17, 1929

SCALES
LAYOUT 1 inch = 500 ft.
PLAN 1 inch = 50 ft.
PROFILE vert 1 inch = 10 ft.
CROSS SECTIONS 1 inch = 5 ft.

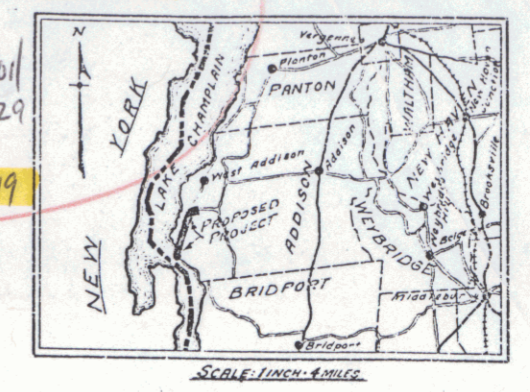
NOTE: Borrow as required to be of approved material, shoulders to be constructed of this item, and paid for as borrow.
If the option of the State, the bridge at Sta. 6172 shall be excluded from the contract for this project.

This project to be constructed in accordance with Standard 1929 specifications. These plans subject to such revisions as may be required by the Chief Engineer.

RIGHT-OF-WAY DIVISION
TOWN FILE
PERPETUAL
Date of 4-17
(To Be Returned To R.O.W. Division)

PAID ROAD	DATE	TO	BY	REMARKS
2	VT.	1-20	7	133

Project 1929
Route VT 17
Date 01/01 1929
P.N. 00R519



NOTE: ANY FURTHER INFORMATION CONCERNING THIS PROJECT SHOULD BE OBTAINED FROM THE OFFICE OF THE CHIEF ENGINEER, STATE HIGHWAY DEPARTMENT, MOUNTAIN VIEW, VERMONT. EITHER THE FIELD OFFICE OR THE BUREAU OFFICE.

APPROVED: [Signature]
SUBMITTED BY ORDER OF THE STATE HIGHWAY BOARD
APRIL 20, 1929

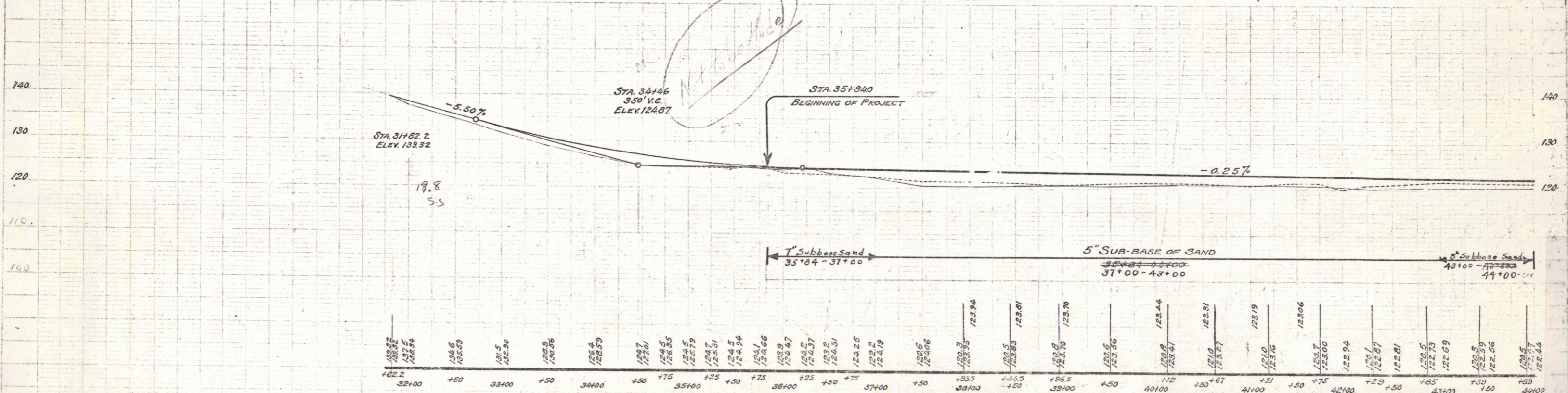
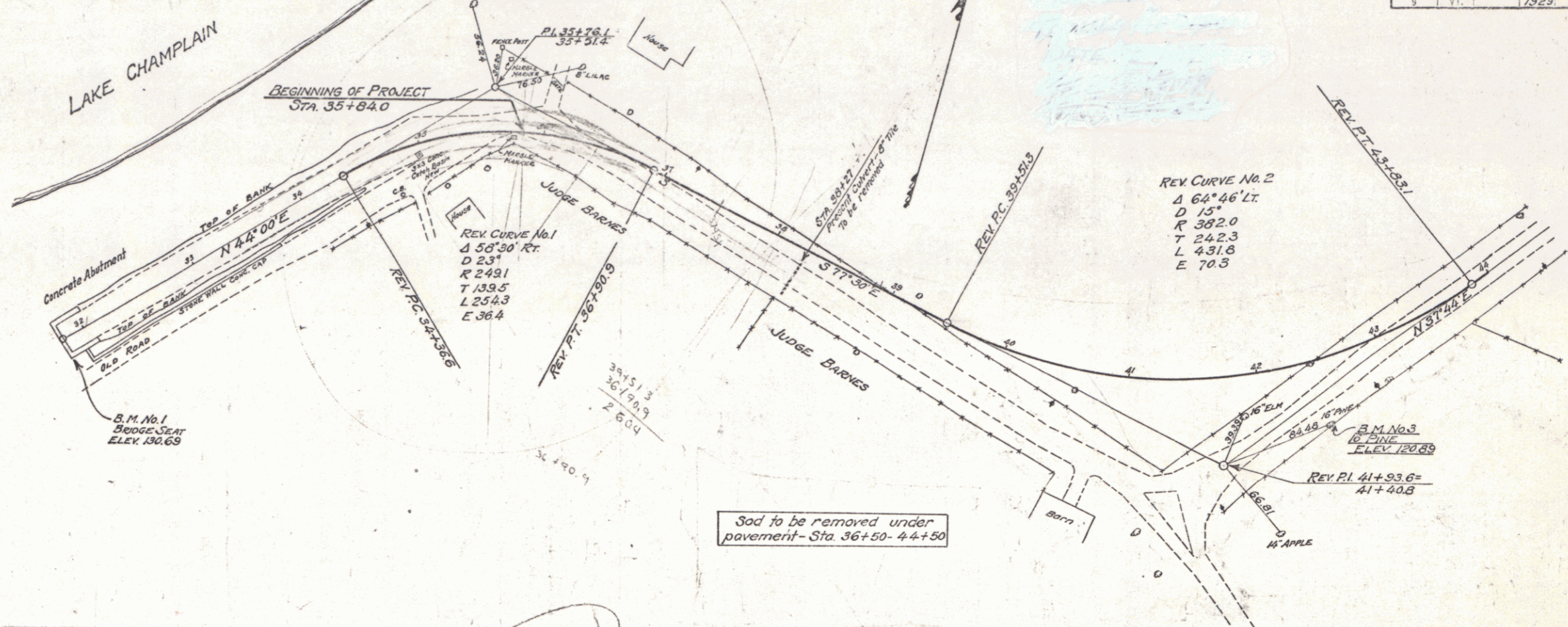
RECOMMENDED FOR APPROVAL [Signature]
RECOMMENDED FOR APPROVAL [Signature]
APPROVED [Signature]
DIRECTOR, BUREAU OF PUBLIC WORKS
SERIES F. NO. 1
SHEET 1 OF 33

checked 3/15/00 ML

FED. ROAD DIST. NO.	STATE	FED. AID PROJ. NO.	FISCAL YEAR	SHEET NO.	TOTAL SHEETS
9	VY.		1929	4	93

PLAN
NOTE BOOK
DATE
BY
CHECKED
DATE
BY

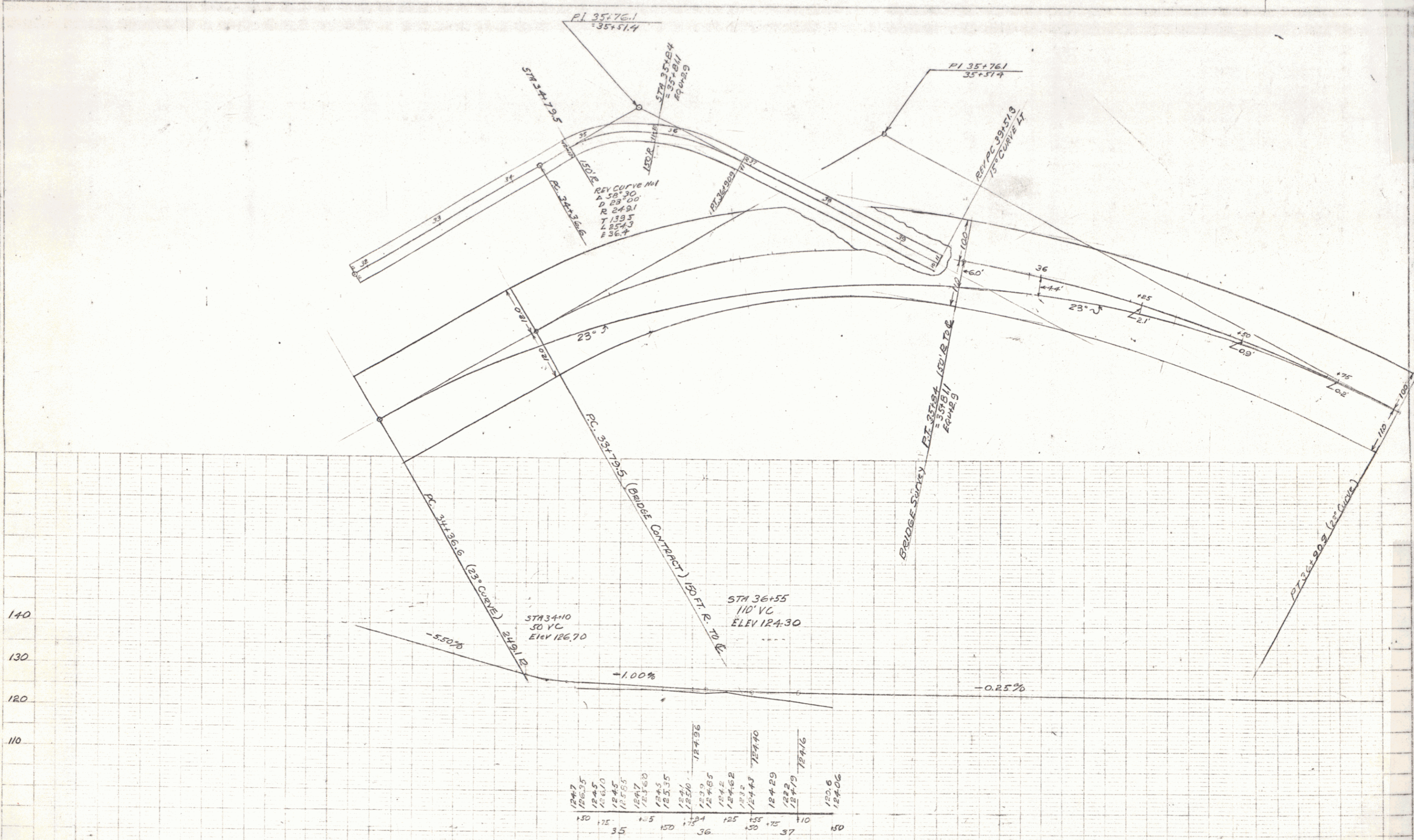
PLAN
NOTE BOOK
DATE
BY
CHECKED
DATE
BY



B.M. No. 1 - South corner Concrete Bridge seat, 16 Ft. Rt. of Sta. 31+80 - Elev. 130.69
 B.M. No. 2 - Spike in 24" Elm, 117 Ft. Lt. of Sta. 35+83 - Elev. 125.43
 B.M. No. 3 - Spike in 16" White Pine, 24 Ft. Rt. of Sta. 42+67 - Elev. 120.89

TOWN OF ADDISON
 LAKE CHAMPLAIN BRIDGE APPROACH ROAD
 SHEET 4 OF 33

PLAN
 DATE: _____
 SCALE: _____



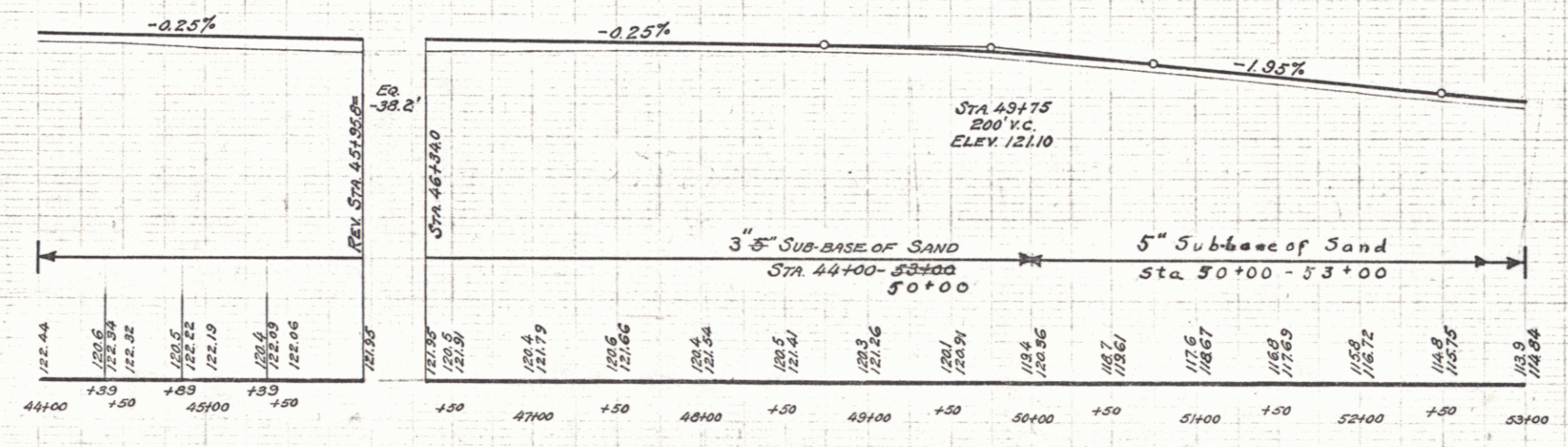
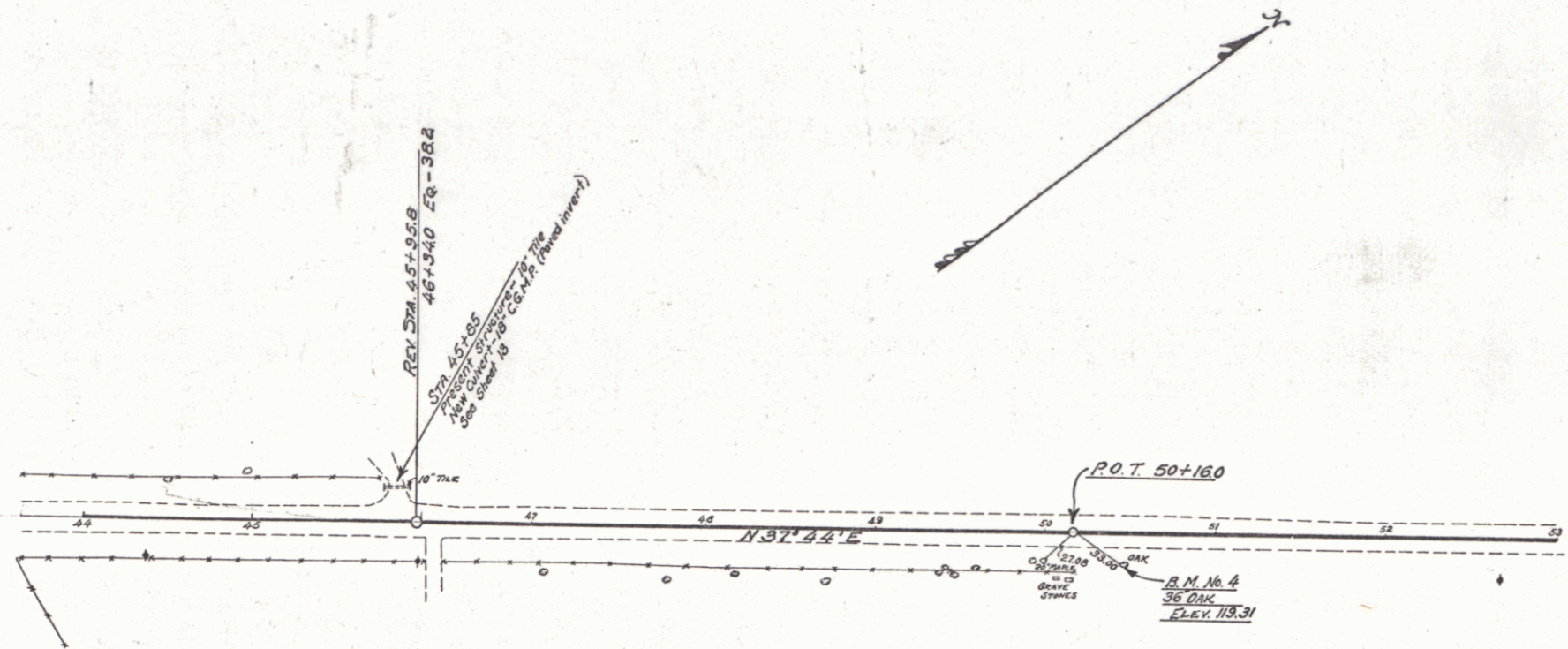
TOWN OF ADDISON
 PROPOSED CHANGE IN LINE
 JULY 6 1929
 SHEET 4A

3

CORRUGATED METAL PIPE (PAVED INVERT)
 NEW DRIVEWAY PIPE CULVERTS REQUIRED

Station	Left	Right	Diam.	Length	Cem. Rubble Masonry
45+85	Left	18"	24 ft.		
40+10	Left	18"	24 ft.		

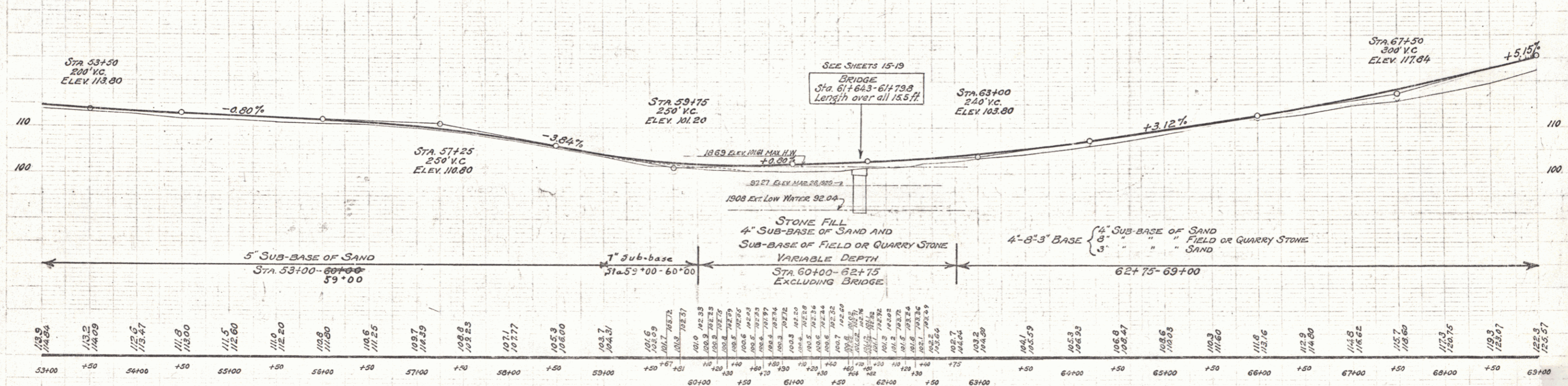
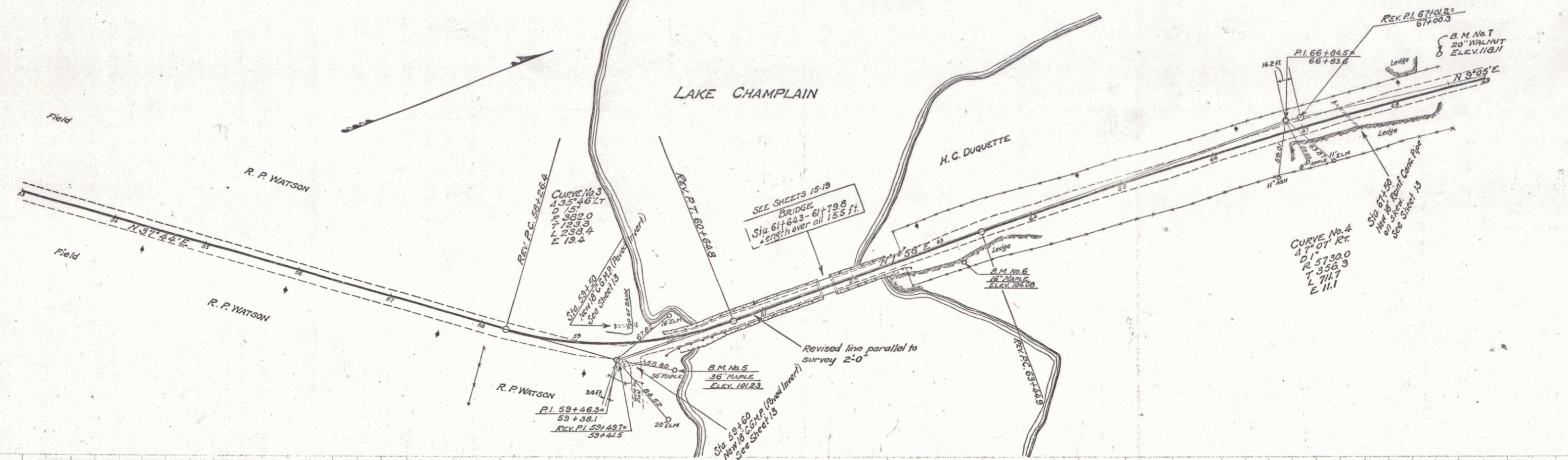
FED. ROAD DIST. NO.	STATE	FED. AID PROJ. NO.	FISCAL YEAR	SHEET NO.	TOTAL SHEETS
9	Vt.		1929	5	33



B.M. No. 4 - Spike in 36" Oak, 17 ft. Et of Sta 50+46 - Elev. 119.31

CABLE GUARD RAIL REQUIRED				WOOD GUARD RAIL REQUIRED				NEW REINF CONC PIPE CULVERTS REQUIRED				DRIVEWAY PIPES								
Stations	Left	Right		Station	Left	Right		Station	Di.	Len	Conc	B	Steel	Sta	L. or R.	Di.	Len	Con	Rub	Mas.
59+00-62+44	200ft	200ft		67+50	24ft	24ft		67+50	10	32ft	3.4	3.4	2.4	59+00	Right	10	24ft	2.0	2.0	2.0
60+25-62+41	216ft	264ft												60+50	Left	10	24ft	2.0	2.0	2.0

FED. ROAD DIST. NO.	STATE	FED. AID PROJ. NO.	FISCAL YEAR	SHEET NO.	TOTAL SHEETS
9	Vt.		1929	6	33



B.M. No. 5 - Spike in 36" Maple, Rt. of Sta. 59+90 - Elev. 101.23
 B.M. No. 6 - Spike in 16" Maple, Rt. of Sta. 63+10 - Elev. 104.08
 B.M. No. 7 - Spike in 20" Walnut, Lt. of Sta. 68+59 - Elev. 118.11

TOWN OF ADDISON
 LAKE CHAMPLAIN BRIDGE APPROACH ROAD
 SHEET 6 OF 33

WOOD GUARD RAIL REQUIRED

Station	Left	Right
76+65	24 ft.	24 ft.
78+23	24 ft.	24 ft.

NEW REIN. CONC. PIPE CULVERTS REQUIRED

Station	Diam.	Length	Conc. B.	Steel
76+65	10"	32 ft.	30 c.f.	33"
78+23	12"	40 ft.	50 c.f.	33"

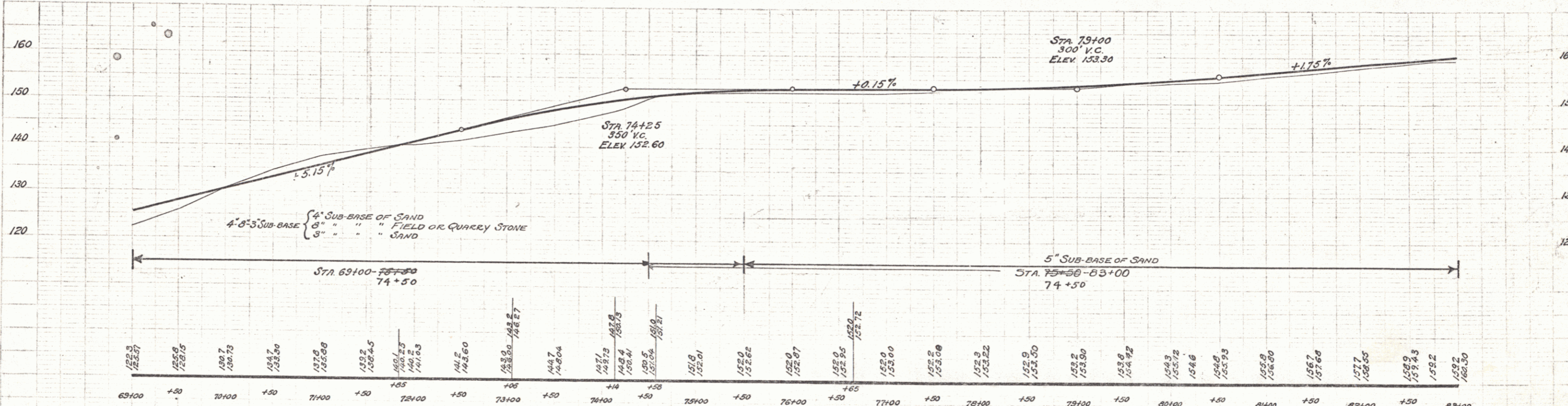
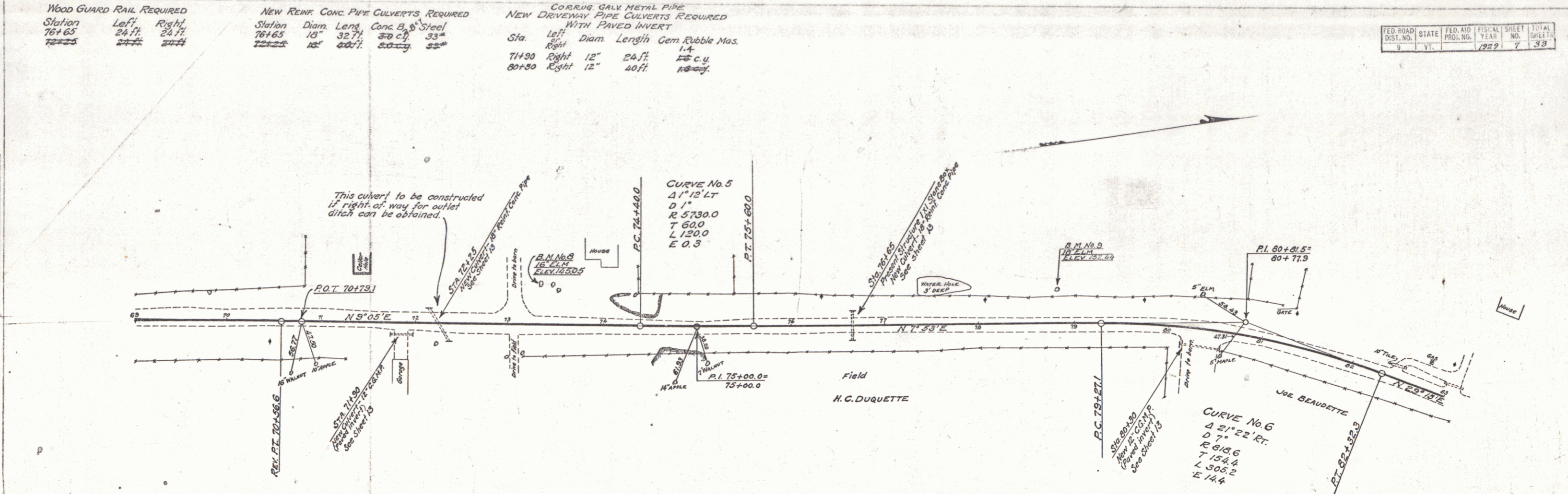
CORRUG. GALV. METAL PIPE NEW DRIVEWAY PIPE CULVERTS REQUIRED WITH PAVED INVERT

Sta.	Left	Right	Diam.	Length	Gem. Rubble Mas.
71+30	Right	12"	24 ft.	14	16 c.y.
80+30	Right	12"	40 ft.	16	18 c.y.

FED. ROAD DIST. NO.	STATE	FED. AID PROJ. NO.	FISCAL YEAR	SHEET NO.	TOTAL SHEETS
9	Vt.		1929	7	39

PLAN
 1/4" = 100'
 1/8" = 50'
 1/16" = 25'
 1/32" = 12.5'

PROF.
 1" = 10'
 1/2" = 5'
 1/4" = 2.5'



B.M. No. 8 - Spike in 16" Elm, 40 ft. Lt. of Sta. 73+34 - Elev. 145.05
 B.M. No. 9 - Spike in 18" Elm, 35 ft. Lt. of Sta. 78+82 - Elev. 132.44

TOWN OF ADDISON
 LAKE CHAMPLAIN BRIDGE APPROACH ROAD
 SHEET (7) OF 33

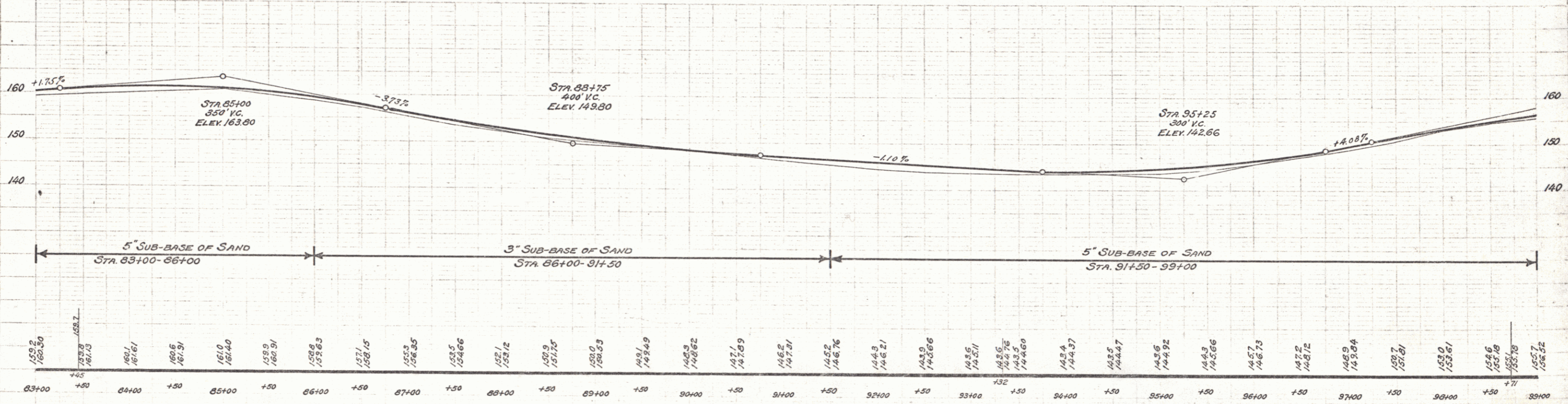
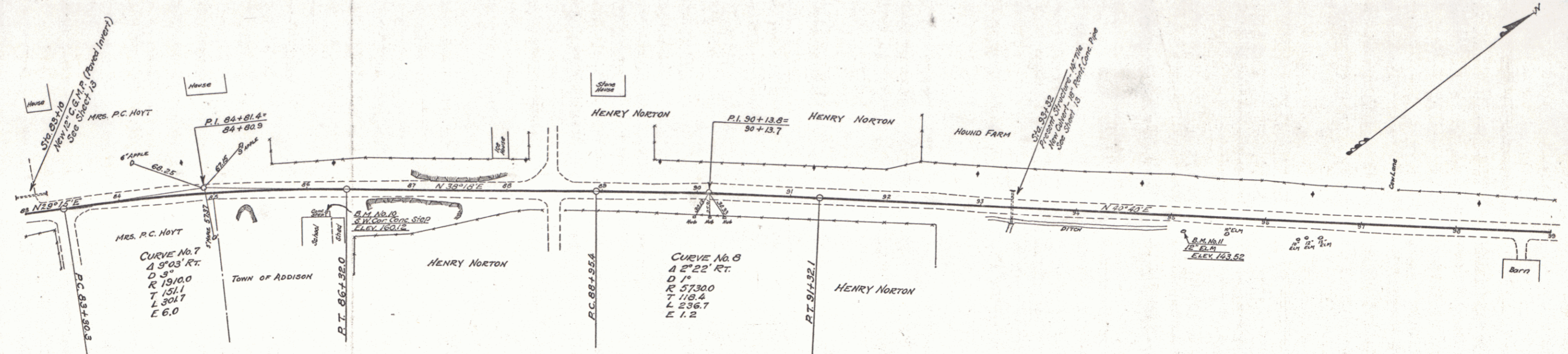
WOOD GUARD RAIL REQUIRED
 Station Left Right
 93+32 24 ft. 24 ft.

NEW REMP CONC. PIPE CULVERTS REQUIRED
 Station Diam. Leng. Conc. B Steel
 93+32 18" 387' 2.8 2.4"

DEVIATION PIPES REQUIRED
 CORRUG. GALV. METAL PIPE (PAVED INVERT)
 Sta. L. or R. Diam. Leng. Cem. Rub. Mas.
 88+10 Left 12" 307' 7.6 c.y.
 88+40 " 12" 205' 1.5

FED. ROAD DIST. NO.	STATE	FED. AID PROJ. NO.	FISCAL YEAR	SHEET NO.	TOTAL SHEETS
9	VT.		1929	8	33

PLAN
 PUTNAM
 CHASE & CHESELEY
 WINTHROP



B.M. No. 10 - S.W. corner Conc 4' x 4' Step 2.5 ft. Rt. of Sta. 86+19 - Elev. 160.12
 B.M. No. 11 - Spike in 12" Elm, 16 ft. Rt. of Sta. 95+12 - Elev. 143.52

TOWN OF ADDISON
 LAKE CHAMPLAIN BRIDGE APPROACH ROAD
 SHEET 8 OF 33

WOOD GUARD RAIL REQUIRED
 Station Left Right
 105+78 24.71 28.71

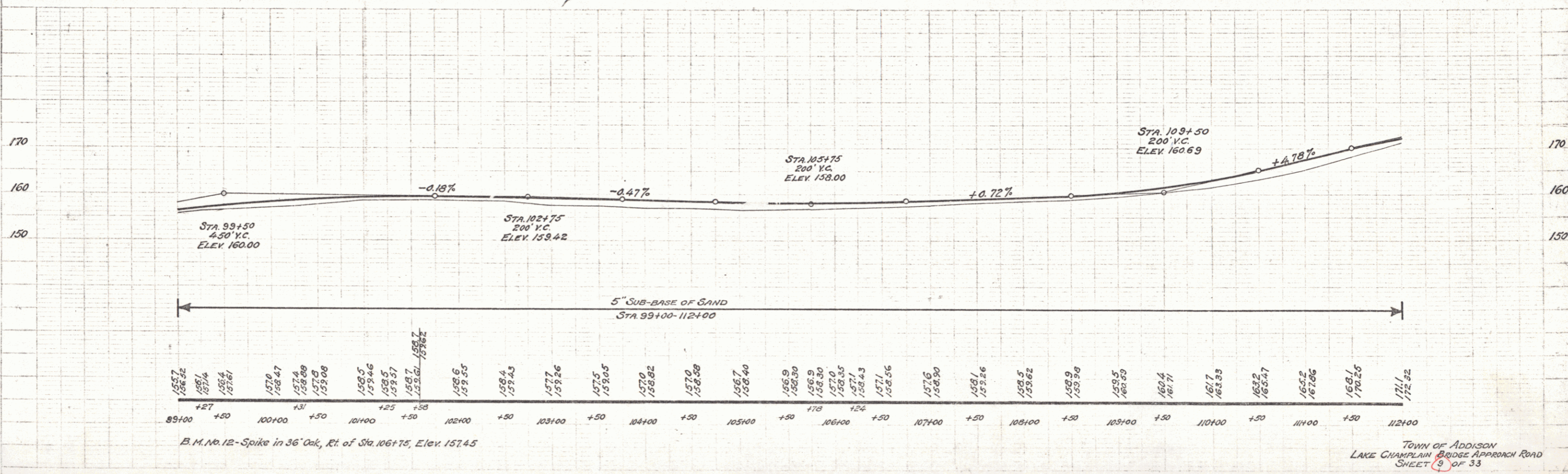
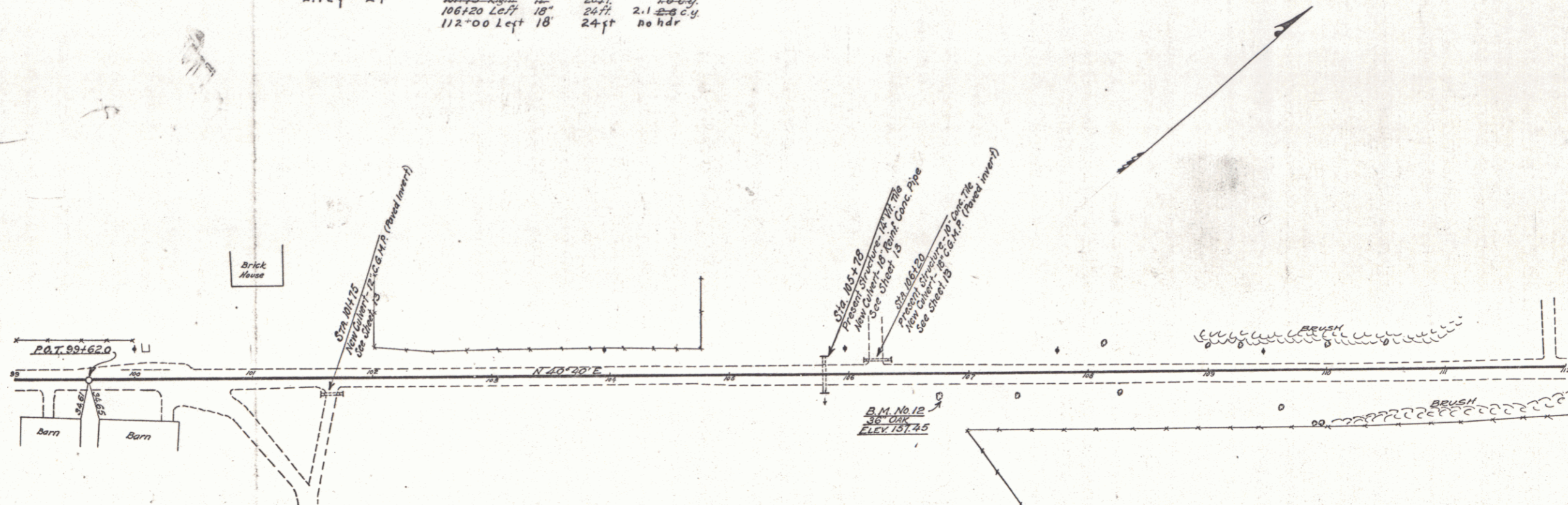
NEW REIN. CONC. PIPE CULVERTS REQUIRED
 Station Diam. Length Conc. B Steel
 105+78 18" 32.71 2.7 c.y. 2.4"

CORRODING GALV. METAL PIPE (PAVED INVERT)
 NEW DRIVEWAY PIPE CULVERTS REQUIRED
 WITH PAVED INVERT
 Sta. Left Right Diam. Length Cam. Rubble Mos.
 106+20 Left 18" 24.71 2.1 c.y.
 112+00 Left 18" 24.71 no hdr.

FED. ROAD DIST. NO.	STATE	FED. AID PROJ. NO.	FISCAL YEAR	SHEET NO.	TOTAL SHEETS
9	VT.		1929	9	33

PLAN
 SURVEYED BY: [blank]
 DRAWN BY: [blank]
 CHECKED BY: [blank]
 DATE: [blank]

PROFILE
 SURVEYED BY: [blank]
 DRAWN BY: [blank]
 CHECKED BY: [blank]
 DATE: [blank]



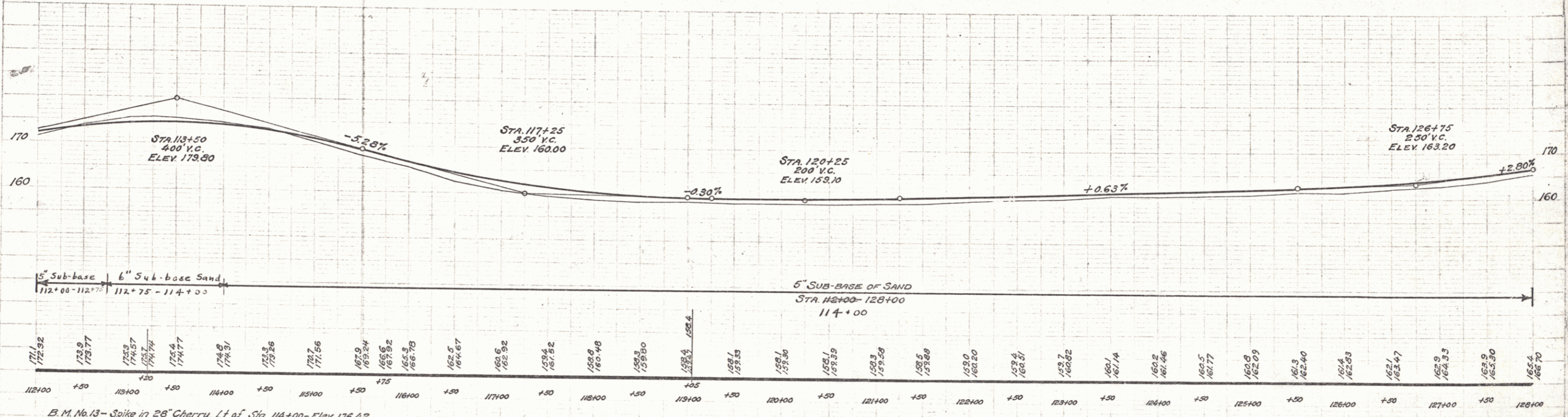
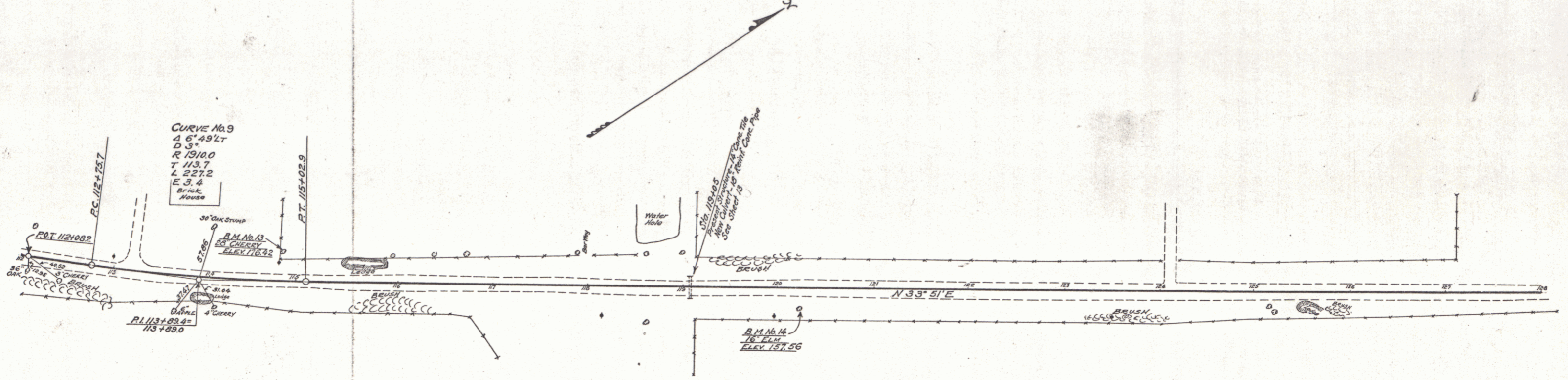
B.M. No. 12 - Spike in 36" Oak, Rt. of Sta. 106+75, Elev. 157.45

TOWN OF ADDISON
 LAKE CHAMPLAIN BRIDGE APPROACH ROAD
 SHEET 9 OF 33

WOOD GUARD RAIL REQUIRED
 Station Left Right
 119+05 24 ft 24 ft

NEW REINF. CONC. PIPE CULVERTS REQUIRED
 Station Diam. Leng. Conc. B. Steel
 115+05 18" 32.71 30 c.y. 2.7" 2.4"

FED. ROAD DIST. NO.	STATE	FED. AID PROJ. NO.	FISCAL YEAR	SHEET NO.	TOTAL SHEETS
9	VT.		1929	10	33



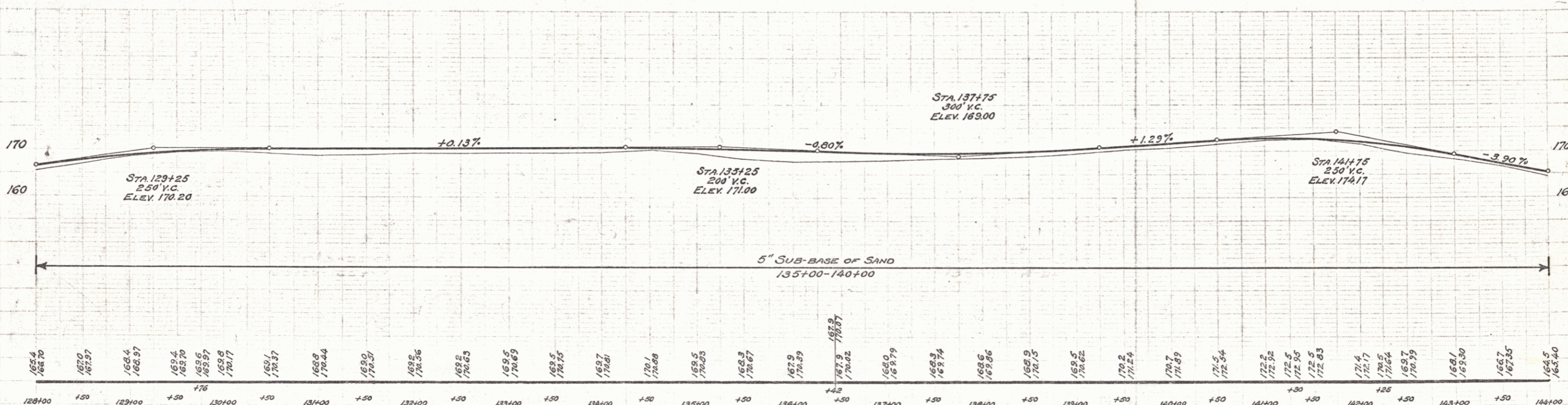
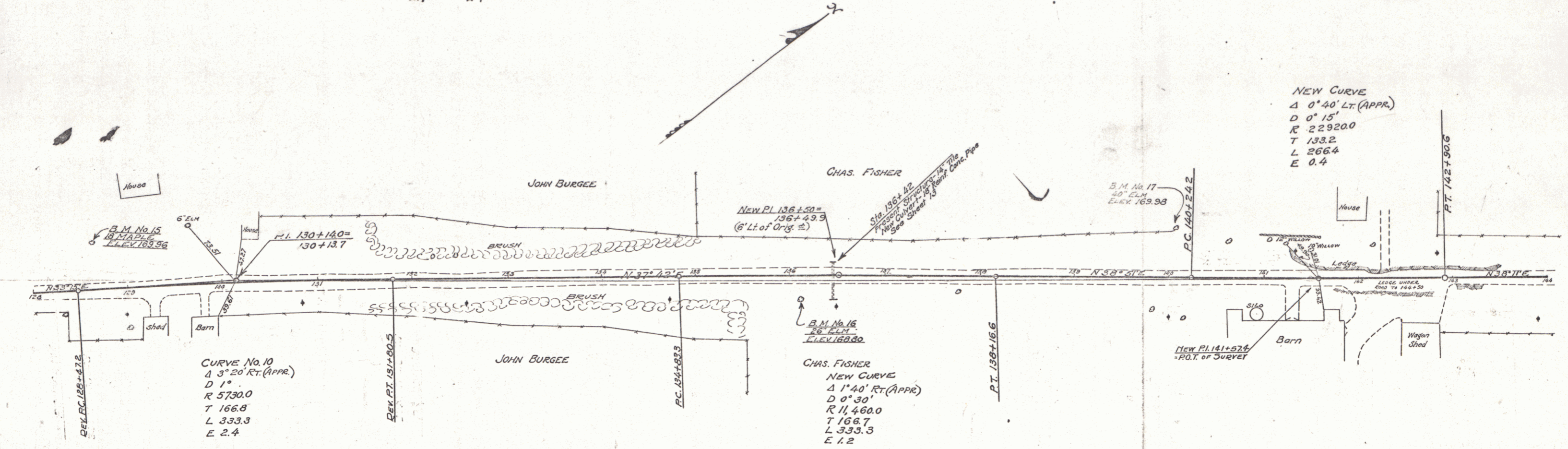
B.M. No. 13 - Spike in 28" Cherry, Lt. of Sta. 114+00 - Elev. 176.42
 B.M. No. 14 - Spike in 16" Elm, Rt. of Sta. 120+20 - Elev. 157.56

TOWN OF ADDISON
 LAKE CHAMPLAIN BRIDGE APPROACH ROAD
 SHEET 10 OF 33

Wood Guard Rail Required
 Station Left Right
 136+42 24 ft. 24 ft.

New Reinf. Conc. Pipe Culverts Required
 Station Diam. Leng. Conc. B Steel
 136+42 18" 32 ft. 30 c.y. 83# 2.1 2.4

FED. ROAD DIST. NO.	STATE	FED. AID PROJ. NO.	FISCAL YEAR	SHEET NO.	TOTAL SHEETS
9	VT.		1929	11	33



128+00	150	129+00	+50	130+00	+50	131+00	+50	132+00	+50	133+00	+50	134+00	+50	135+00	+50	136+00	+50	137+00	+50	138+00	+50	139+00	+50	140+00	+50	141+00	+50	142+00	+50	143+00	+50	144+00																																																																																																																																																																																																																																																																																																																																																																																																																																																																																																																																																																																																																																																																																																																																																																																																																																																																																														
165.4	168.70	167.0	167.57	168.97	169.4	169.70	169.95	170.17	170.37	170.44	170.50	170.56	170.63	170.69	170.75	170.81	170.89	170.93	170.97	171.03	171.09	171.14	171.19	171.24	171.29	171.34	171.39	171.44	171.49	171.54	171.59	171.64	171.69	171.74	171.79	171.84	171.89	171.94	171.99	172.04	172.09	172.14	172.19	172.24	172.29	172.34	172.39	172.44	172.49	172.54	172.59	172.64	172.69	172.74	172.79	172.84	172.89	172.94	172.99	173.04	173.09	173.14	173.19	173.24	173.29	173.34	173.39	173.44	173.49	173.54	173.59	173.64	173.69	173.74	173.79	173.84	173.89	173.94	173.99	174.04	174.09	174.14	174.19	174.24	174.29	174.34	174.39	174.44	174.49	174.54	174.59	174.64	174.69	174.74	174.79	174.84	174.89	174.94	174.99	175.04	175.09	175.14	175.19	175.24	175.29	175.34	175.39	175.44	175.49	175.54	175.59	175.64	175.69	175.74	175.79	175.84	175.89	175.94	175.99	176.04	176.09	176.14	176.19	176.24	176.29	176.34	176.39	176.44	176.49	176.54	176.59	176.64	176.69	176.74	176.79	176.84	176.89	176.94	176.99	177.04	177.09	177.14	177.19	177.24	177.29	177.34	177.39	177.44	177.49	177.54	177.59	177.64	177.69	177.74	177.79	177.84	177.89	177.94	177.99	178.04	178.09	178.14	178.19	178.24	178.29	178.34	178.39	178.44	178.49	178.54	178.59	178.64	178.69	178.74	178.79	178.84	178.89	178.94	178.99	179.04	179.09	179.14	179.19	179.24	179.29	179.34	179.39	179.44	179.49	179.54	179.59	179.64	179.69	179.74	179.79	179.84	179.89	179.94	179.99	180.04	180.09	180.14	180.19	180.24	180.29	180.34	180.39	180.44	180.49	180.54	180.59	180.64	180.69	180.74	180.79	180.84	180.89	180.94	180.99	181.04	181.09	181.14	181.19	181.24	181.29	181.34	181.39	181.44	181.49	181.54	181.59	181.64	181.69	181.74	181.79	181.84	181.89	181.94	181.99	182.04	182.09	182.14	182.19	182.24	182.29	182.34	182.39	182.44	182.49	182.54	182.59	182.64	182.69	182.74	182.79	182.84	182.89	182.94	182.99	183.04	183.09	183.14	183.19	183.24	183.29	183.34	183.39	183.44	183.49	183.54	183.59	183.64	183.69	183.74	183.79	183.84	183.89	183.94	183.99	184.04	184.09	184.14	184.19	184.24	184.29	184.34	184.39	184.44	184.49	184.54	184.59	184.64	184.69	184.74	184.79	184.84	184.89	184.94	184.99	185.04	185.09	185.14	185.19	185.24	185.29	185.34	185.39	185.44	185.49	185.54	185.59	185.64	185.69	185.74	185.79	185.84	185.89	185.94	185.99	186.04	186.09	186.14	186.19	186.24	186.29	186.34	186.39	186.44	186.49	186.54	186.59	186.64	186.69	186.74	186.79	186.84	186.89	186.94	186.99	187.04	187.09	187.14	187.19	187.24	187.29	187.34	187.39	187.44	187.49	187.54	187.59	187.64	187.69	187.74	187.79	187.84	187.89	187.94	187.99	188.04	188.09	188.14	188.19	188.24	188.29	188.34	188.39	188.44	188.49	188.54	188.59	188.64	188.69	188.74	188.79	188.84	188.89	188.94	188.99	189.04	189.09	189.14	189.19	189.24	189.29	189.34	189.39	189.44	189.49	189.54	189.59	189.64	189.69	189.74	189.79	189.84	189.89	189.94	189.99	190.04	190.09	190.14	190.19	190.24	190.29	190.34	190.39	190.44	190.49	190.54	190.59	190.64	190.69	190.74	190.79	190.84	190.89	190.94	190.99	191.04	191.09	191.14	191.19	191.24	191.29	191.34	191.39	191.44	191.49	191.54	191.59	191.64	191.69	191.74	191.79	191.84	191.89	191.94	191.99	192.04	192.09	192.14	192.19	192.24	192.29	192.34	192.39	192.44	192.49	192.54	192.59	192.64	192.69	192.74	192.79	192.84	192.89	192.94	192.99	193.04	193.09	193.14	193.19	193.24	193.29	193.34	193.39	193.44	193.49	193.54	193.59	193.64	193.69	193.74	193.79	193.84	193.89	193.94	193.99	194.04	194.09	194.14	194.19	194.24	194.29	194.34	194.39	194.44	194.49	194.54	194.59	194.64	194.69	194.74	194.79	194.84	194.89	194.94	194.99	195.04	195.09	195.14	195.19	195.24	195.29	195.34	195.39	195.44	195.49	195.54	195.59	195.64	195.69	195.74	195.79	195.84	195.89	195.94	195.99	196.04	196.09	196.14	196.19	196.24	196.29	196.34	196.39	196.44	196.49	196.54	196.59	196.64	196.69	196.74	196.79	196.84	196.89	196.94	196.99	197.04	197.09	197.14	197.19	197.24	197.29	197.34	197.39	197.44	197.49	197.54	197.59	197.64	197.69	197.74	197.79	197.84	197.89	197.94	197.99	198.04	198.09	198.14	198.19	198.24	198.29	198.34	198.39	198.44	198.49	198.54	198.59	198.64	198.69	198.74	198.79	198.84	198.89	198.94	198.99	199.04	199.09	199.14	199.19	199.24	199.29	199.34	199.39	199.44	199.49	199.54	199.59	199.64	199.69	199.74	199.79	199.84	199.89	199.94	199.99	200.04	200.09	200.14	200.19	200.24	200.29	200.34	200.39	200.44	200.49	200.54	200.59	200.64	200.69	200.74	200.79	200.84	200.89	200.94	200.99	201.04	201.09	201.14	201.19	201.24	201.29	201.34	201.39	201.44	201.49	201.54	201.59	201.64	201.69	201.74	201.79	201.84	201.89	201.94	201.99	202.04	202.09	202.14	202.19	202.24	202.29	202.34	202.39	202.44	202.49	202.54	202.59	202.64	202.69	202.74	202.79	202.84	202.89	202.94	202.99	203.04	203.09	203.14	203.19	203.24	203.29	203.34	203.39	203.44	203.49	203.54	203.59	203.64	203.69	203.74	203.79	203.84	203.89	203.94	203.99	204.04	204.09	204.14	204.19	204.24	204.29	204.34	204.39	204.44	204.49	204.54	204.59	204.64	204.69	204.74	204.79	204.84	204.89	204.94	204.99	205.04	205.09	205.14	205.19	205.24	205.29	205.34	205.39	205.44	205.49	205.54	205.59	205.64	205.69	205.74	205.79	205.84	205.89	205.94	205.99	206.04	206.09	206.14	206.19	206.24	206.29	206.34	206.39	206.44	206.49	206.54	206.59	206.64	206.69	206.74	206.79	206.84	206.89	206.94	206.99	207.04	207.09	207.14	207.19	207.24	207.29	207.34	207.39	207.44	207.49	207.54	207.59	207.64	207.69	207.74	207.79	207.84	207.89	207.94	207.99	208.04	208.09	208.14	208.19	208.24	208.29	208.34	208.39	208.44	208.49	208.54	208.59	208.64	208.69	208.74	208.79	208.84	208.89	208.94	208.99	209.04	209.09	209.14	209.19	209.24	209.29	209.34	209.39	209.44	209.49	209.54	209.59	209.64	209.69	209.74	209.79	209.84	209.89	209.94	209.99	210.04	210.09	210.14	210.19	210.24	210.29	210.34	210.39	210.44	210.49	210.54	210.59	210.64	210.69	210.74	210.79	210.84	210.89	210.94	210.99	211.04	211.09	211.14	211.19	211.24	211.29	211.34	211.39	211.44	211.49	211.54	211.59	211.64	211.69	211.74	211.79	211.84	211.89	211.94	211.99	212.04	212.09	212.14	212.19	212.24	212.29	212.34	212.39	212.44	212.49	212.54	212.59	212.64	212.69	212.74	212.79	212.84	212.89	212.94	212.99	213.04	213.09	213.14	213.19	213.24	213.29	213.34	213.39	213.44	213.49	213.54	213.59	213.64	213.69	213.74	213.79	213.84	213.89	213.94	213.99	214.04	214.09	214.14	214.19	214.24	214.29	214.34	214.39	214.44	214.49	214.54	214.59	214.64	214.69	214.74

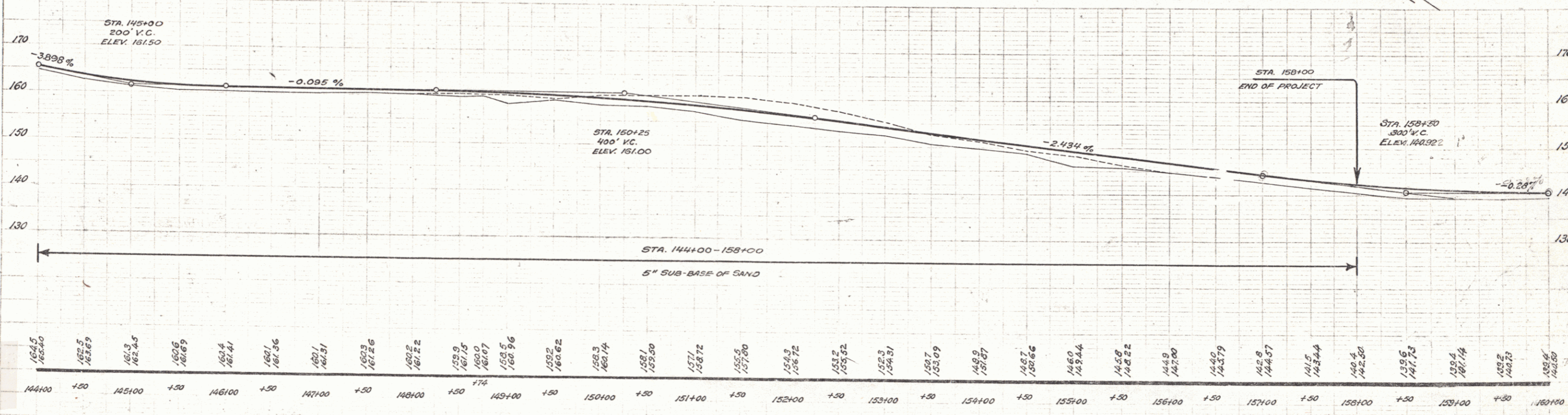
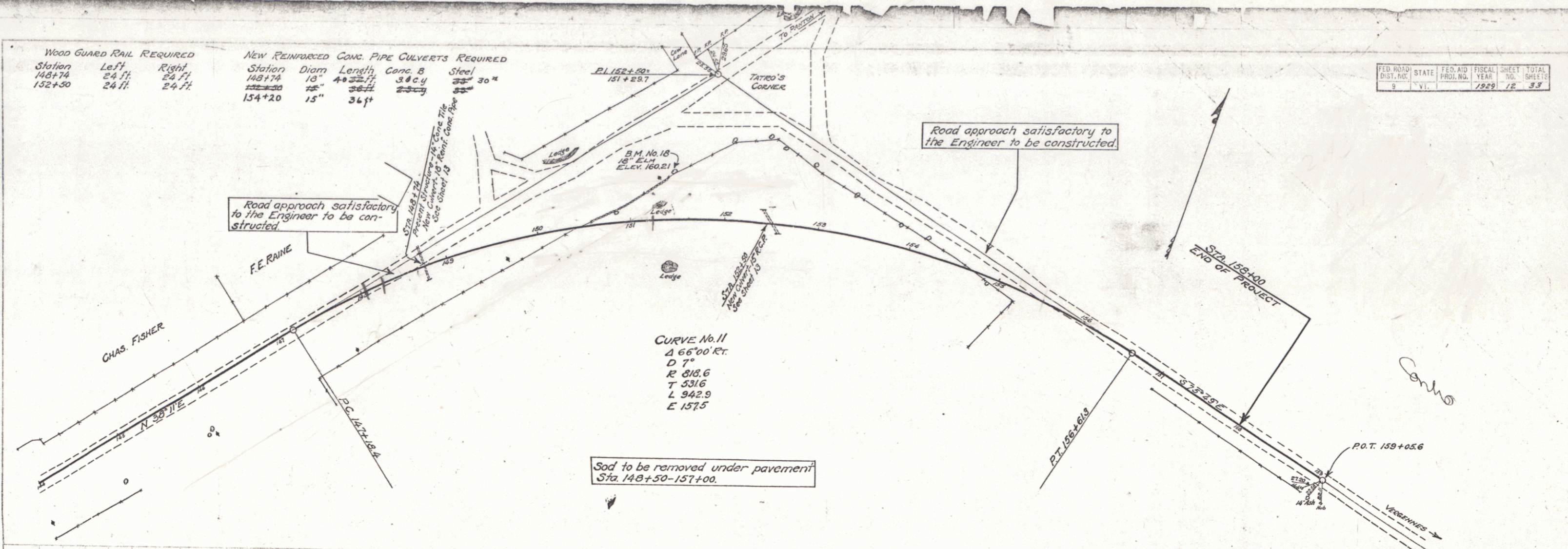
WOOD GUARD RAIL REQUIRED

Station	Left	Right
148+74	24 ft.	24 ft.
152+50	24 ft.	24 ft.

NEW REINFORCED CONCRETE PIPE CULVERTS REQUIRED

Station	Diam.	Length	Conc. B	Steel
148+74	18"	40 ft.	340 y	30"
154+20	15"	36 ft.		

FED. ROAD DIST. NO.	STATE	FED. AID PROJ. NO.	FISCAL YEAR	SHEET NO.	TOTAL SHEETS
9	Vt.		1929	12	33



B.M. No. 18 - Spike in 18" Elm, Lt. of Sta. 151+50 - Elev. 160.21

PLAN
NOTED
DATE 10/10/29
BY: [Signature]

PROFILE
CHECKED BY: [Signature]