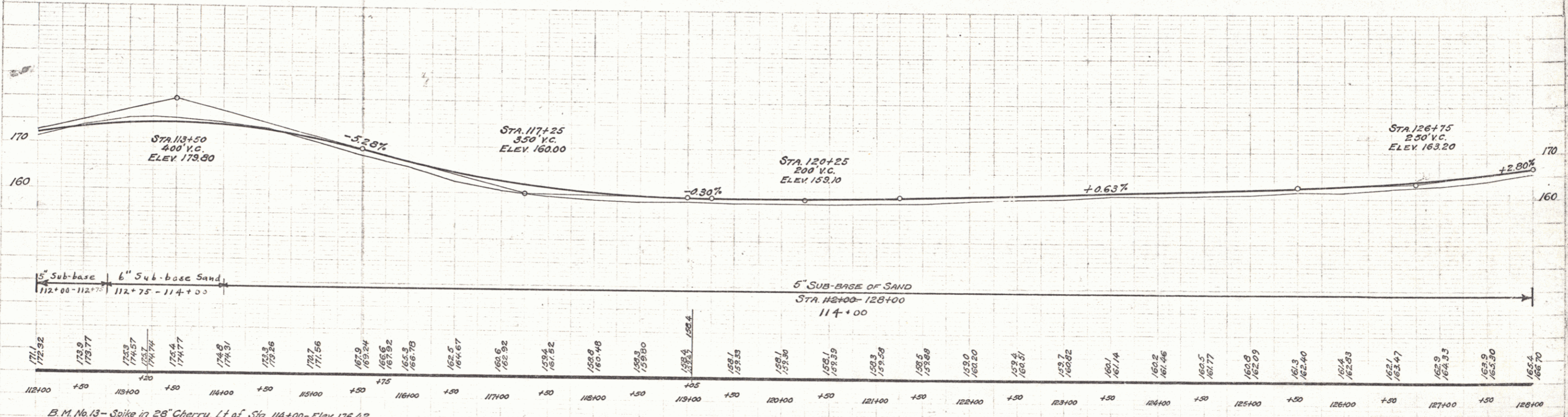
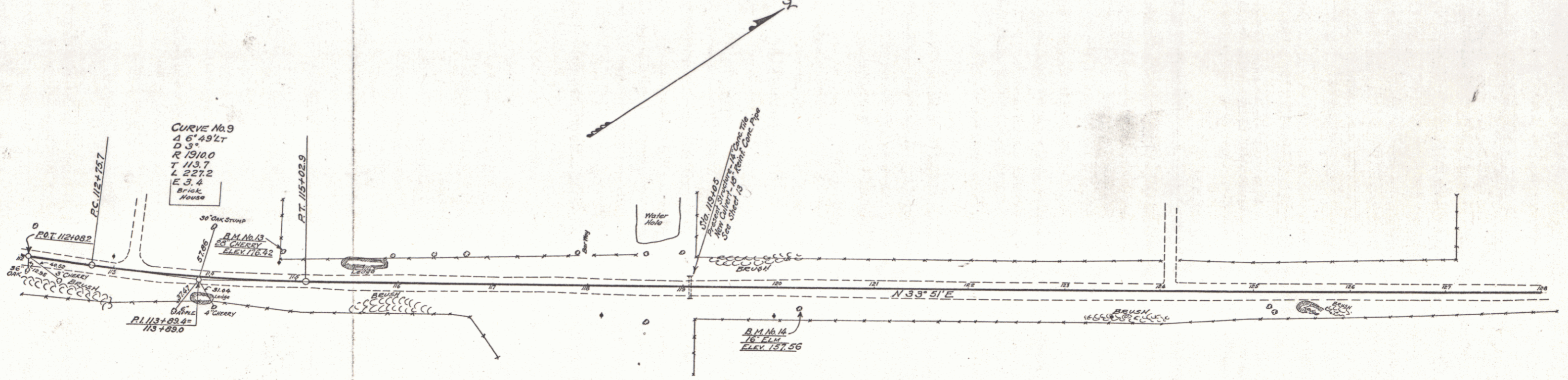


WOOD GUARD RAIL REQUIRED
 Station Left Right
 119+05 24 ft 24 ft

NEW REINF. CONC. PIPE CULVERTS REQUIRED
 Station Diam. Leng. Conc. B. Steel
 118+05 18" 32.71 30 c.y. 2.7" 2.4"

| FED. ROAD DIST. NO. | STATE | FED. AID PROJ. NO. | FISCAL YEAR | SHEET NO. | TOTAL SHEETS |
|---------------------|-------|--------------------|-------------|-----------|--------------|
| 9 | VT. | | 1929 | 10 | 33 |



B.M. No. 13 - Spike in 28" Cherry, Lt. of Sta. 114+00 - Elev. 176.42
 B.M. No. 14 - Spike in 16" Elm, Rt. of Sta. 120+20 - Elev. 157.56

TOWN OF ADDISON
 LAKE CHAMPLAIN BRIDGE APPROACH ROAD
 SHEET 10 OF 33