

WOOD GUARD RAIL REQUIRED

Station	Left	Right
76+65	24 ft.	24 ft.
78+23	24 ft.	24 ft.

NEW REINF. CONC. PIPE CULVERTS REQUIRED

Station	Diam.	Length	Conc. B.	Steel
76+65	10"	32 ft.	30 c.f.	33"
78+23	12"	40 ft.	50 c.f.	33"

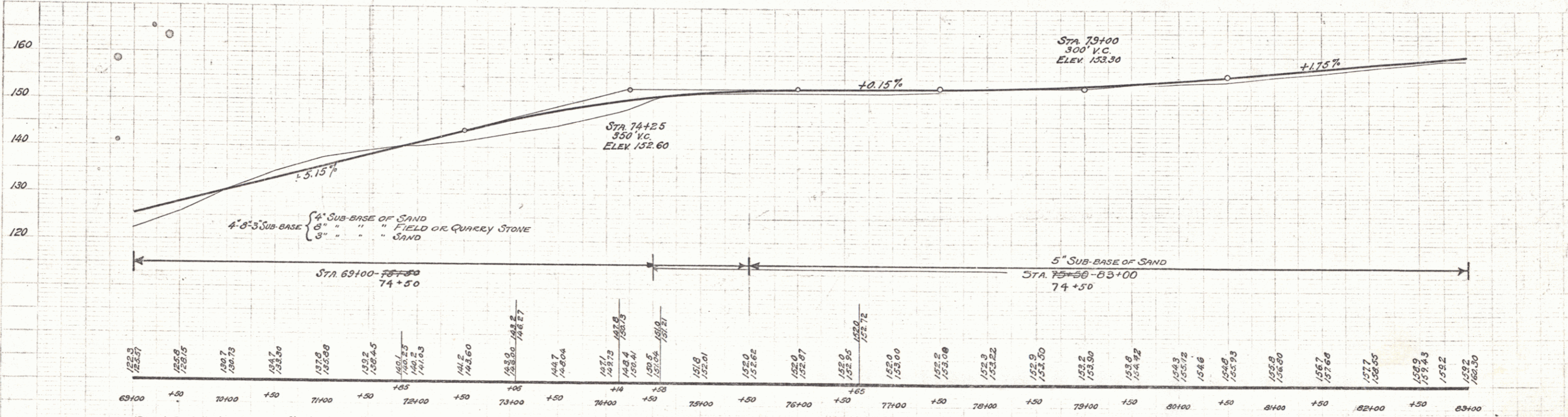
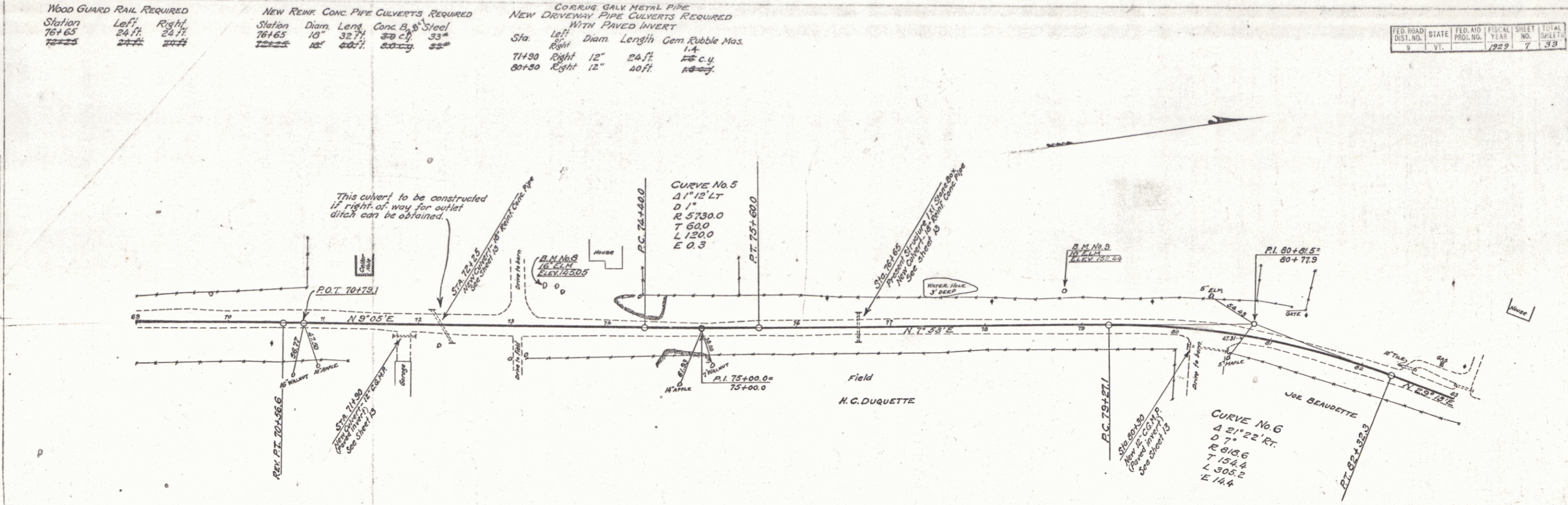
CORRUG. GALV. METAL PIPE NEW DRIVEWAY PIPE CULVERTS REQUIRED WITH PAVED INVERT

Sta.	Left	Right	Diam.	Length	Gem. Rubble Mas.
71+30	Right	12"	24 ft.	14	16 c.y.
80+30	Right	12"	40 ft.	16	18 c.y.

FED. ROAD DIST. NO.	STATE	FED. AID PROJ. NO.	FISCAL YEAR	SHEET NO.	TOTAL SHEETS
9	Vt.		1929	7	39

PLAN
 SHOWING
 LOCATION OF
 CULVERTS
 AND
 DRIVEWAYS
 ON
 LAKE CHAMPLAIN BRIDGE APPROACH ROAD

PROF.
 SHOWING
 ELEVATIONS
 AND
 GRADES
 ON
 LAKE CHAMPLAIN BRIDGE APPROACH ROAD



B.M. No. 8 - Spike in 16" Elm, 40 ft. Lt. of Sta. 73+34 - Elev. 145.05
 B.M. No. 9 - Spike in 18" Elm, 35 ft. Lt. of Sta. 78+82 - Elev. 132.44

TOWN OF ADDISON
 LAKE CHAMPLAIN BRIDGE APPROACH ROAD
 SHEET 7 OF 39