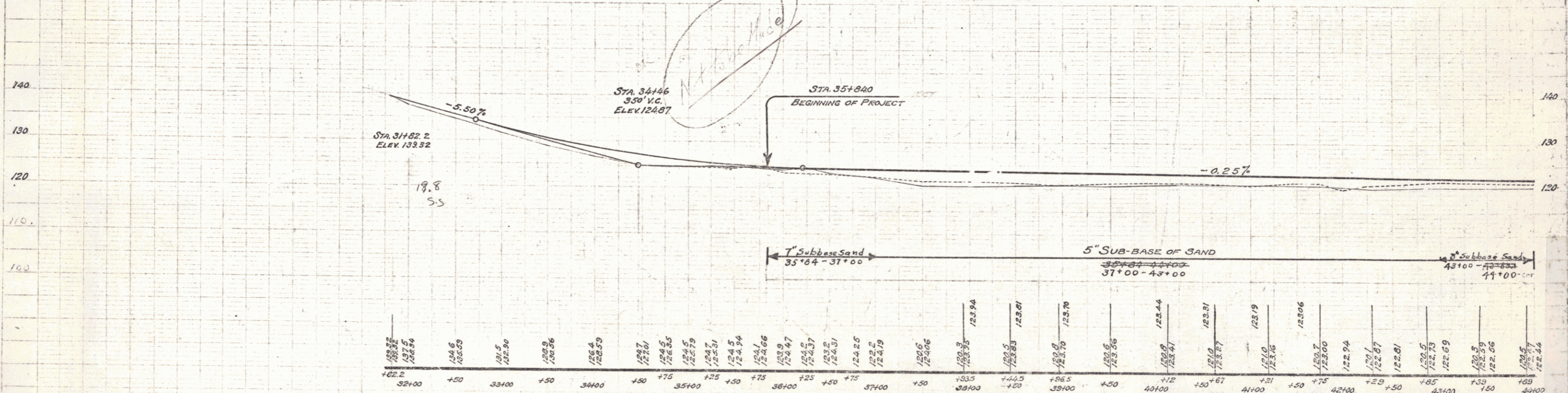
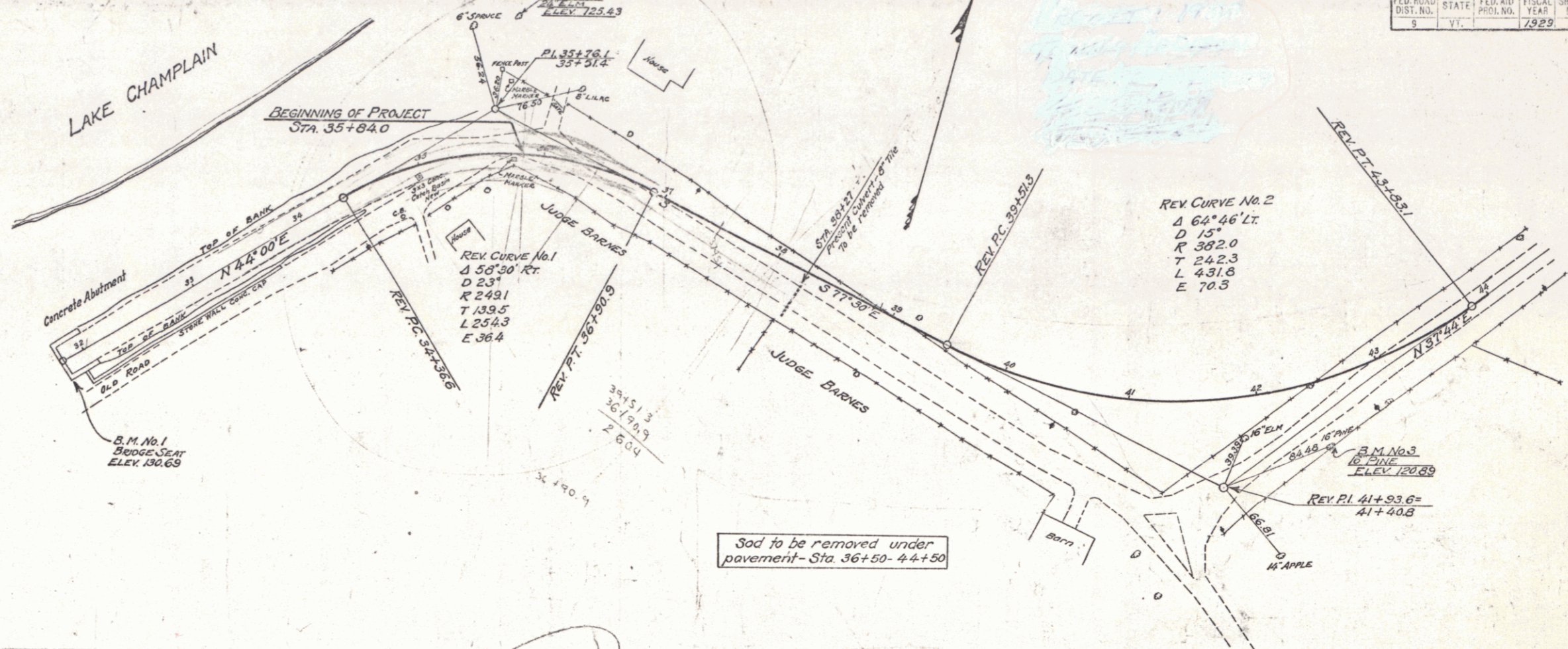


FED. ROAD DIST. NO.	STATE	FED. AID PROJ. NO.	FISCAL YEAR	SHEET NO.	TOTAL SHEETS
9	VY.		1929	4	93



B.M. No. 1 - South corner Concrete Bridge seat, 16 ft. Rt. of Sta. 31+80 - Elev. 130.69
 B.M. No. 2 - Spike in 24' Elm, 117' Lt. of Sta. 35+83 - Elev. 125.43
 B.M. No. 3 - Spike in 16' White Pine, 24' Rt. of Sta. 42+67 - Elev. 120.89

TOWN OF ADDISON
 LAKE CHAMPLAIN BRIDGE APPROACH ROAD
 SHEET 4 OF 33

PLAN
 NOTE BOOK
 DRAWING NO. 1700

PLAN
 NOTE BOOK
 DRAWING NO. 1700