

INDEX OF SHEETS

SHEET NO. 1	TITLE PAGE
2	TYPICAL CROSS-SECTION OF IMPROVEMENT DOUBLE TACK COAT OF REFINED TAR, WITH P.E.A. STONE SEAL, ITEM 342-A (MOD.)
3	EARTHWORK SHEET
4	CHANNEL EARTHWORK SHEET
5	GRADE SHEET (BRIDGE)
6	QUANTITY SHEET
7-10	PLAN & PROFILE
11	PRELIMINARY INFORMATION SHEET
12	CHANNEL PLAN
13	BRIDGE PLAN AND ELEVATION (ALSO LIGHTING CONDUITS)
14	ABUTMENT NO. 1
15	PIERS NOS. 1 AND 2
16	ABUTMENT NO. 2
17	SUPERSTRUCTURE (ALSO LIGHTING CONDUITS)
18	DETAILS OF RAILING
19	EXPANSION PLATE DETAILS
20	BEARING DEVICES, SPLICE AND COVER PLATES
21	APPROACH SLABS
22	STANDARD STRUCTURE SHEET S 40 BARRICADES, SIGNS AND LIGHTS (ROADWAY)
23	S 41 TYPICAL GRADING
24	S 46-45 BOUNDARY MARKERS
25	S 51-48 STEEL BEAM GUARD RAIL WITH STEEL POSTS (TYPE II SAFETY BEAM)
26	S 52-48 STEEL BEAM GUARD RAIL WITH STEEL POSTS (TYPE I FLEX BEAM)
27	SB-2 DETAIL S 206
28	SB-11 BARRICADES, SIGNS AND LIGHTS (BRIDGE)
29	SB-20 DETAILS D, F, J, K AND M
30-32	CROSS SECTIONS
33-36	CHANNEL SECTIONS

STANDARD STRUCTURE SHEETS APPROVED BY THE CHIEF ENGINEER, VERMONT STATE DEPARTMENT OF HIGHWAYS

S 40 JUNE 10, 1950
S 46-45 JAN 16, 1950

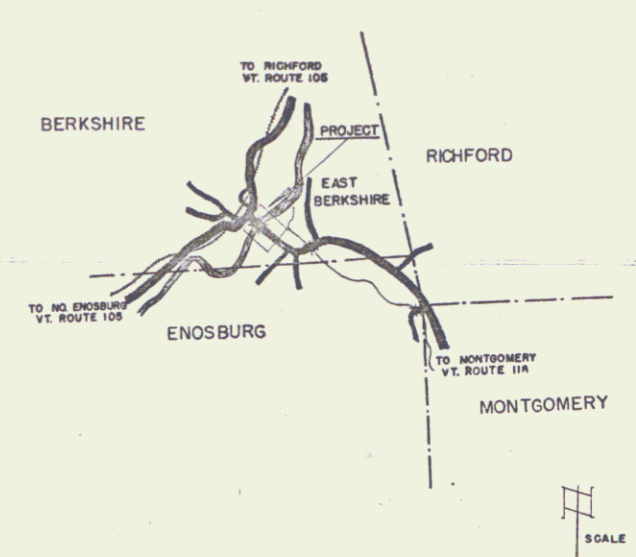
STATE OF VERMONT
STATE HIGHWAY DEPARTMENT

PLAN AND PROFILE OF PROPOSED
STATE HIGHWAY

SECONDARY PROJECT
TOWN OF BERKSHIRE
COUNTY OF FRANKLIN
VERMONT ROUTE 118
E. BERKSHIRE-MONTGOMERY ROAD

BEGINNING AT THE INTERSECTION OF VERMONT ROUTES 105 AND 118
IN THE HAMLET OF EAST BERKSHIRE AND EXTENDING SOUTHEASTERLY
1424.0 FEET

LENGTH OF ROADWAY 1,119.0 FEET = 0.212 MI.
LENGTH OF BRIDGE 305.0 FEET = 0.058 MI.
LENGTH OF PROJECT 1,424.0 FEET = 0.270 MI.



PROJECT NAME & NO.	TYPE
Berkshire BR 333(3)	W. Beam, 30' Span, 2' 0" Dia. Spans, 100' on Span, 2.3W/4.5V

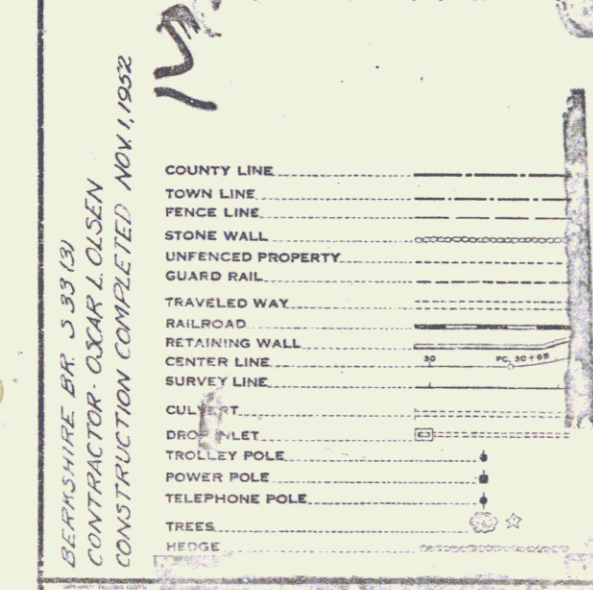
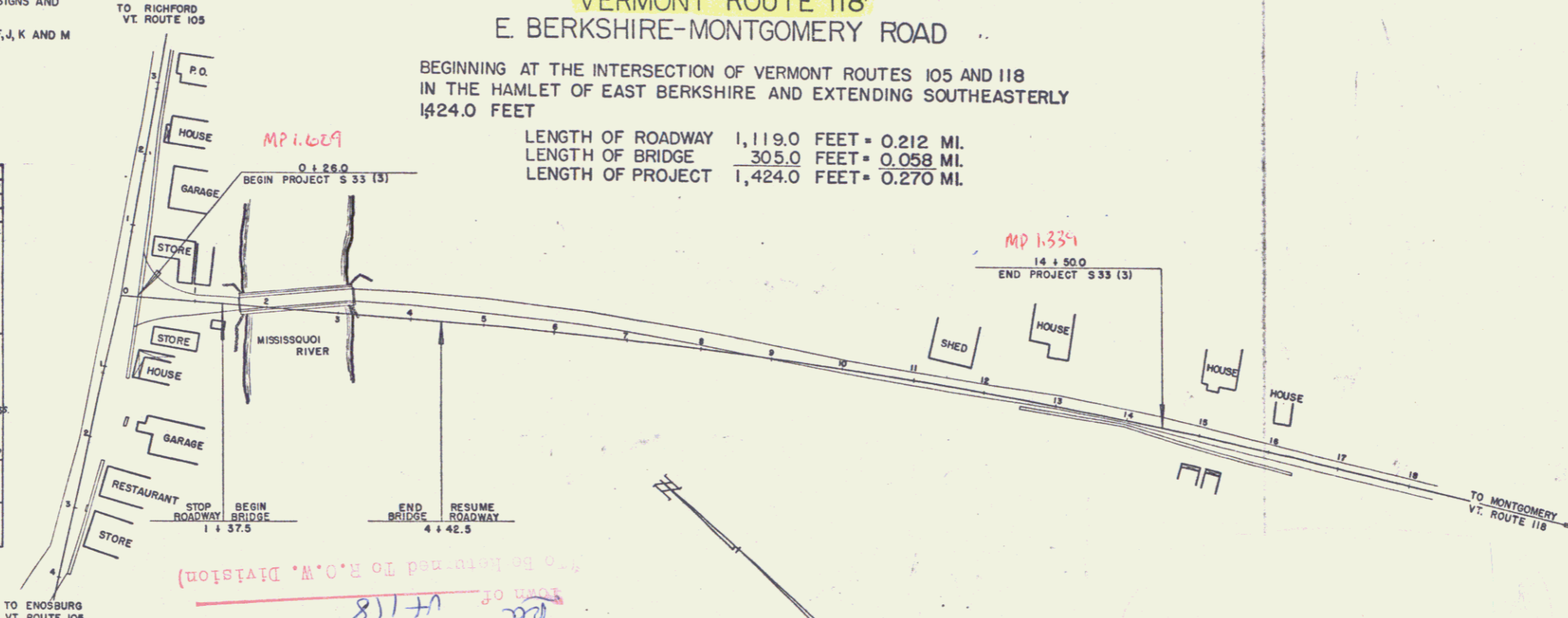
RECORD PLANS

MATERIALS

Course Aggregate	Swanton Lime Works & Nadeau-Johnson, VT
Fine Aggregate	Nadeau-Johnson, VT
Cement	Lehigh Portland Cement Co. Aiken, N.Y.
Unseasoned Timber piling	Arthur St. Crisp, Montgomery
Reinforcing Steel	VI Struct. Steel, Burlington
Structural Steel	VI Struct. Steel, Burlington
Galv. Metal Pipe	Worthington Engr. & T. J. McCover, Jr. (Galv. Metal)
6" Vit. Sewer Pipe	W. B. Pondy, St. Albans, N.E. Metal Arms Co.
Pile Shoes	Reynolds & Son, Barre
Bridge Paving	VI Struct. Steel Co.
Steel Beam Guard Rail	Durham Steel Co.
Gravel for Sub-base	River Road, Missisquoi River near bridge.
Point	Wilmington Point of Merit, W. Waterbury, Mass.
Ref. for RT's	Barrett Co. Malden, Mass.
Tar Bitum.	Koppers Products Co., Everett
Bit. Cons. Pav't	Egner, Mangella & VI Paving Co. Burlington

Contractor: Oscar L. Olsen
Res. Engrs.: Fred W. Badger & H. F. Earle
Record Plans: J. F. W.

Contract Dated: Nov. 21, 1950
Construction Began: March 6, 1951
Construction Completed: Nov. 1, 1952



GROUND ELEVATION..... DATUM..... LINE.....

GRADE ELEVATION..... DATUM..... LINE.....

CURVE DATA

DEFLECTION ANGLE.....	Δ
DEGREE OF CURVE.....	D
RADIUS OF CURVE.....	R
TANGENT DISTANCE.....	T
LENGTH OF CURVE.....	L
EXTERNAL DISTANCE.....	E
POINT OF INTERSECTION.....	P. I.
POINT OF CURVE.....	P. C.
POINT OF TANGENT.....	P. T.
POINT ON TANGENT.....	P. O. T.

SCALES

TITLE	1" = 100'
TYPICAL	1" = 20'
PLAN	1" = 20'
PROFILE HORIZONTAL	1" = 20'
PROFILE VERTICAL	1" = 10'
CROSS SECTIONS	1" = 5' & 10'

APPROVED: 18 AUG. 1950
H. H. Laing
CHIEF ENGINEER

SUBMITTED BY ORDER OF THE STATE HIGHWAY BOARD

Pin # 00RS18

THESE PLANS ARE SUBJECT TO SUCH REVISIONS AS MAY BE REQUIRED BY THE BUREAU OF PUBLIC ROADS OR THE COMMISSIONER OF HIGHWAYS.

CONSTRUCTION IS TO BE CARRIED ON IN ACCORDANCE WITH THE PLANS AND THE STANDARD ROAD AND BRIDGE SPECIFICATIONS OF 1948, AS APPROVED JULY 25, 1949, BY THE BUREAU OF PUBLIC ROADS INCLUDING ALL SUBSEQUENT APPROVED REVISIONS AND SUCH REVISED SPECIFICATIONS AND SPECIAL PROVISIONS AS ARE SUBMITTED WITH THE PLANS.

DEPARTMENT OF COMMERCE BUREAU OF PUBLIC ROADS
RECOMMENDED FOR APPROVAL
DISTRICT ENGINEER
APPROVED:
DIVISION ENGINEER
DATE

APPROVED 18 AUG 1950 <i>H. H. Laing</i> BRIDGE ENGINEER	APPROVED 18 AUG 1950 <i>H. H. Laing</i> HIGHWAY ENGINEER	APPROVED 23 1950 <i>R. C. Chace</i> DISTRICT HIGHWAY COMMISSIONER
---	--	---

SERIES 5 NO. 33 (3) FILED
SHEET 1 OF 36