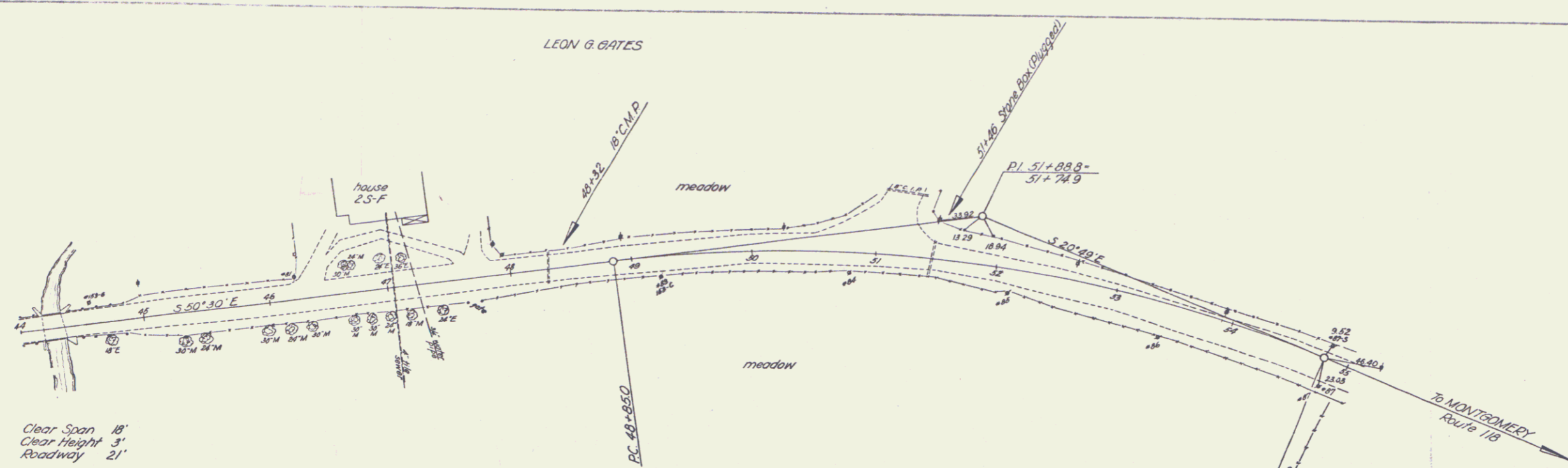


PLAN	DATE	BY	CHKD
NOTE BOOK	10/20/50	W.S.	W.S.
PROJECT	ROADWAY		



Clear Span 18'
Clear Height 31'
Roadway 21'

(To Be Returned To R.O.W. Division)

OWN FILE
PERMANENT
HIGHWAY DIVISION

Δ 29°41'24"
D 31.8
R 146.3
T 303.8
L 593.7
E 39.6

PROPOSED	BY	DATE
NOTED		
APPROVED		

PLATE 1-PLAN PROFILE & VERTICAL CURVES
SCALE: 1"=40' HORIZ. 1"=10' VERT.

E. Berkshire St. 241 L
SHEET 4

5