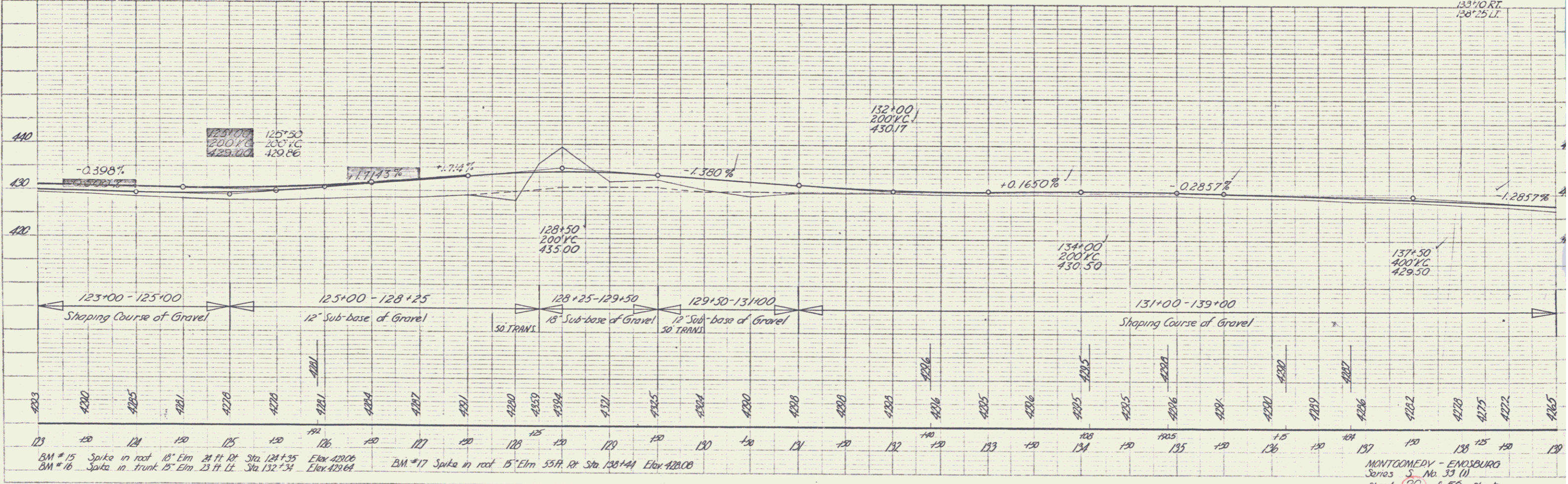
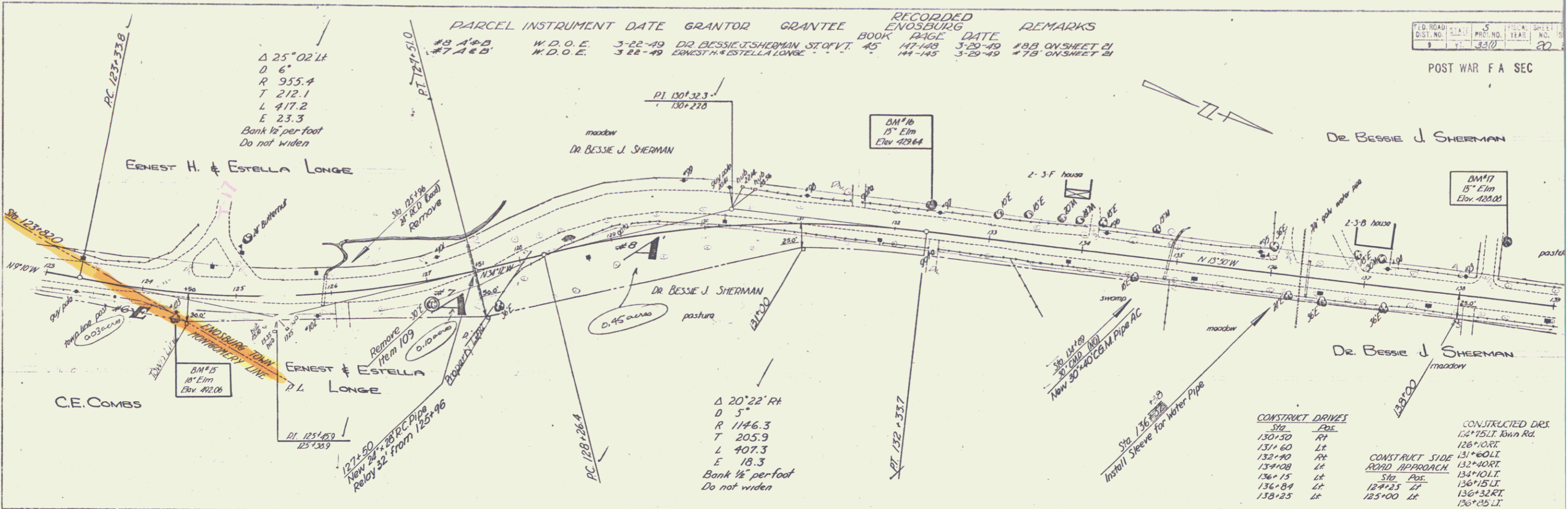


PLAN
 DATE 3-20-49
 DRAWN BY H. H. HUGHES
 CHECKED BY H. H. HUGHES
 TITLE ROAD IMPROVEMENTS
 NO. 3310

PROFILE
 DATE 3-20-49
 DRAWN BY H. H. HUGHES
 CHECKED BY H. H. HUGHES
 TITLE ROAD IMPROVEMENTS
 NO. 3310



PARCEL	INSTRUMENT	DATE	GRANTOR	GRANTEE	RECORDED	REMARKS
#8 148-B	W.D.O.E.	3-22-49	DR. BESSIE J. SHERMAN	ST. Q.V.T.	45	147-148 3-20-49 #8B ON SHEET 21
#7 148-B	W.D.O.E.	3-22-49	ERNEST H. & ESTELLA LONGE		44-145	3-29-49 #7B ON SHEET 21

POST WAR F A SEC
 DIST. NO. 3310
 PROJ. NO. 3310
 SHEET NO. 20

CONSTRUCT DRIVES	CONSTRUCTED DRIS
130+50 RT	134+75 LT John Rd.
131+60 Lt	126+00 RT
132+90 RT	CONSTRUCT SIDE 131+00 LT
134+08 Lt	ROAD APPROACH 132+40 RT
136+15 Lt	134+10 LT
136+84 Lt	136+15 LT
138+25 Lt	127+25 Lt
	136+32 RT
	138+25 Lt
	133+10 RT
	138+25 Lt

BM #15 Spike in root 15" Elm 21 ft Rt Sta. 124+35 Elev. 420.06
 BM #16 Spike in trunk 15" Elm 23 ft Lt Sta. 132+34 Elev. 429.64
 BM #17 Spike in root 15" Elm 55 ft Rt Sta. 138+44 Elev. 428.08

MONTGOMERY - ENOSBURG
 Series S, No. 33 (1)
 Sheet 20 of 50 Sheets